

Rep 8-1-00 SMJ RL

# Lee Surveying and Mapping Co., Inc.

Land Surveys • Topography • Subdivisions • Construction Layout

117 N. Madriver St.  
Bellefontaine OH 43311



Phone: (937) 593-7335  
Fax: (937) 593-7444

## ACKLEY 19.990 ACRES TRACT A

Lying Virginia Military Survey 5042, Monroe Township, Logan County, Ohio.

Being out of the David L. Ackley, Phyllis J. Ackley and Halley D. Ackley original 40.05 acre tract as deeded and described in Official Record 229, Page 662 of the Logan County Records of Deeds and being more particularly described as follows:

Beginning at a 5/8 inch iron rod set on the northeast corner of Virginia Military Survey 5042.

THENCE, with the east line of Virginia Military Survey 5042 and the west lines of the Terry Lee Stidham 1.77 acre tract (O.R. 216, Pg. 936) and the Junior Connolly original 188.0 acre tract (Vol. 339, Pg. 76, Tract I), S 15°-52'-32" E, a distance of 527.72 feet to a 5/8 inch iron rod set, passing a 5/8 inch iron rod set at 391.14 feet, and a harrow tooth set on the center-line of Township Road 169 (60 feet wide) at 445.10 feet.

THENCE, with the north lines of the David C. Linkinhoker 3.00 acre tract (Vol. 398, Pg. 817), the Christina Palmer 1.027 acre tract (O.R. 440, Pg. 762) and the Betty J. Smith original 104 acre tract (O.R. 294, Pg. 337), S 74°-25'-48" W, a distance of 1658.72 feet to a 5/8 inch iron rod set, passing 5/8 inch iron rods set at 55.07 feet and at 91.03 feet.

THENCE, N 15°-52'-32" W, a distance of 522.19 feet to a 5/8 inch iron rod set.

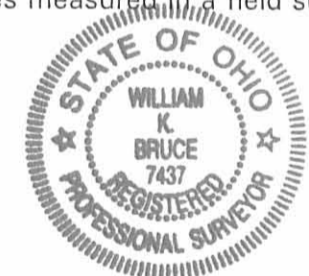
THENCE, with the north line of Virginia Military Survey 5042 and the south line of the David L. Ackley, Trustee under his declaration of Trust dated December 14, 1998, 203.75 acre tract (O.R. 424, Pg. 49), N 74°-14'-20" E, a distance of 1658.70 feet to the point of beginning.

Containing 19.990 acres, of which 0.136 acre is within the highway right-of-way.

The basis for bearings is the north line of Virginia Military Survey 5042, being N 74°-14'-20" E, and all other bearings are from angles and distances measured in a field survey by Lee Surveying and Mapping Co., Inc. on July 17, 2000.

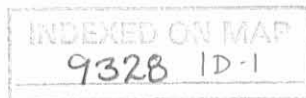
Description prepared by:

William K. Bruce  
Professional Surveyor 7437  
July 24, 2000



ORIGINAL STAMP IN GREEN

L-2986



REC'D 8-1-00 smy

# Lee Surveying and Mapping Co., Inc.

Land Surveys • Topography • Subdivisions • Construction Layout

117 N. Madriver St.  
Bellefontaine OH 43311



Phone: (937) 593-7335  
Fax: (937) 593-7444

## ACKLEY 19.990 ACRES TRACT B

Lying Virginia Military Survey 5042, Monroe Township, Logan County, Ohio.

Being out of the David L. Ackley, Phyllis J. Ackley and Halley D. Ackley original 40.05 acre tract as deeded and described in Official Record 229, Page 662 of the Logan County Records of Deeds and being more particularly described as follows:

Beginning at a 5/8 inch iron rod set on the northeast corner of Virginia Military Survey 5042.

THENCE, with the north line of Virginia Military Survey 5042 and the south line of the David L. Ackley, Trustee under his declaration of Trust dated December 14, 1998, 203.75 acre tract (O.R. 424, Pg. 49), S 74°-14'-20" W, a distance of 1658.70 feet to a 5/8 inch iron rod set at the TRUE POINT OF BEGINNING.

THENCE, S 15°-52'-32" E, a distance of 522.19 feet to a 5/8 inch iron rod set.

THENCE, with the lines of the Betty J. Smith original 104.0 acre tract (Vol. 294, Pg. 337) the following two (2) courses:

S 74°-25'-48" W, a distance of 1657.63 feet to a 5/8 inch iron rod found.

N 20°-02'-54" W, a distance of 518.11 feet to a wood corner post found.

THENCE, with the north line of Virginia Military Survey 5042 and the south line of the said 203.75 acre tract, N 74°-14'-20" E, a distance of 1695.31 feet to the point of beginning.

Containing 19.990 acres.

The basis for bearings is the north line of Virginia Military Survey 5042, being N 74°-14'-20" E, and all other bearings are from angles and distances measured in a field survey by Lee Surveying and Mapping Co., Inc. on July 17, 2000.

Description prepared by:

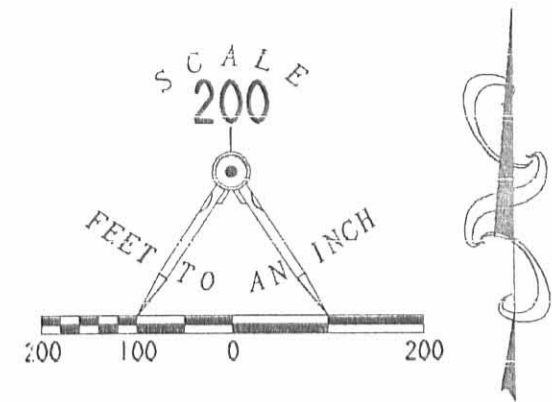
William K. Bruce  
Professional Surveyor 7437  
July 24, 2000



ORIGINAL STAMP IN GREEN  
L-2986

INDEXED ON MAP  
9328 1D-2

Rec'd 8-1-00 SWY



- LEGEND
- 5/8 INCH IRON ROD SET
  - ⊕ HARROW TOOTH SET
  - 5/8 INCH IRON ROD FOUND
  - WOOD CORNER POST FOUND
  - ⊗ P.K. NAIL WITH SHINER FOUND
  - ⊗ HARROW TOOTH FOUND

DAVID L. ACKLEY, TRUSTEE UNDER HIS DECLARATION OF TRUST DATED DECEMBER 14, 1998 AND PHYLLIS J. ACKLEY, TRUSTEE UNDER HER DECLARATION OF TRUST DATED DECEMBER 14, 1998  
 ORIG. 203.75 ACRE TRACT  
 O.R. 424, PG. 49

WILBUR M. KISER AND GERTRUDE P. KISER  
 ORIG. 40.64 ACRES  
 O.R. 292, PG. 409

TERRY LEE STIDHAM AND THERESE R. LANGEN  
 1.77 ACRES  
 O.R. 216, PG. 936

JUNIOR CONNOLLY  
 ORIG. 188.0 ACRES  
 VOL. 339, PG. 76  
 TRACT I

TRACT A  
 19.990 ACRES  
 OF WHICH 0.136 ACRE IS WITHIN THE HIGHWAY RIGHT-OF-WAY

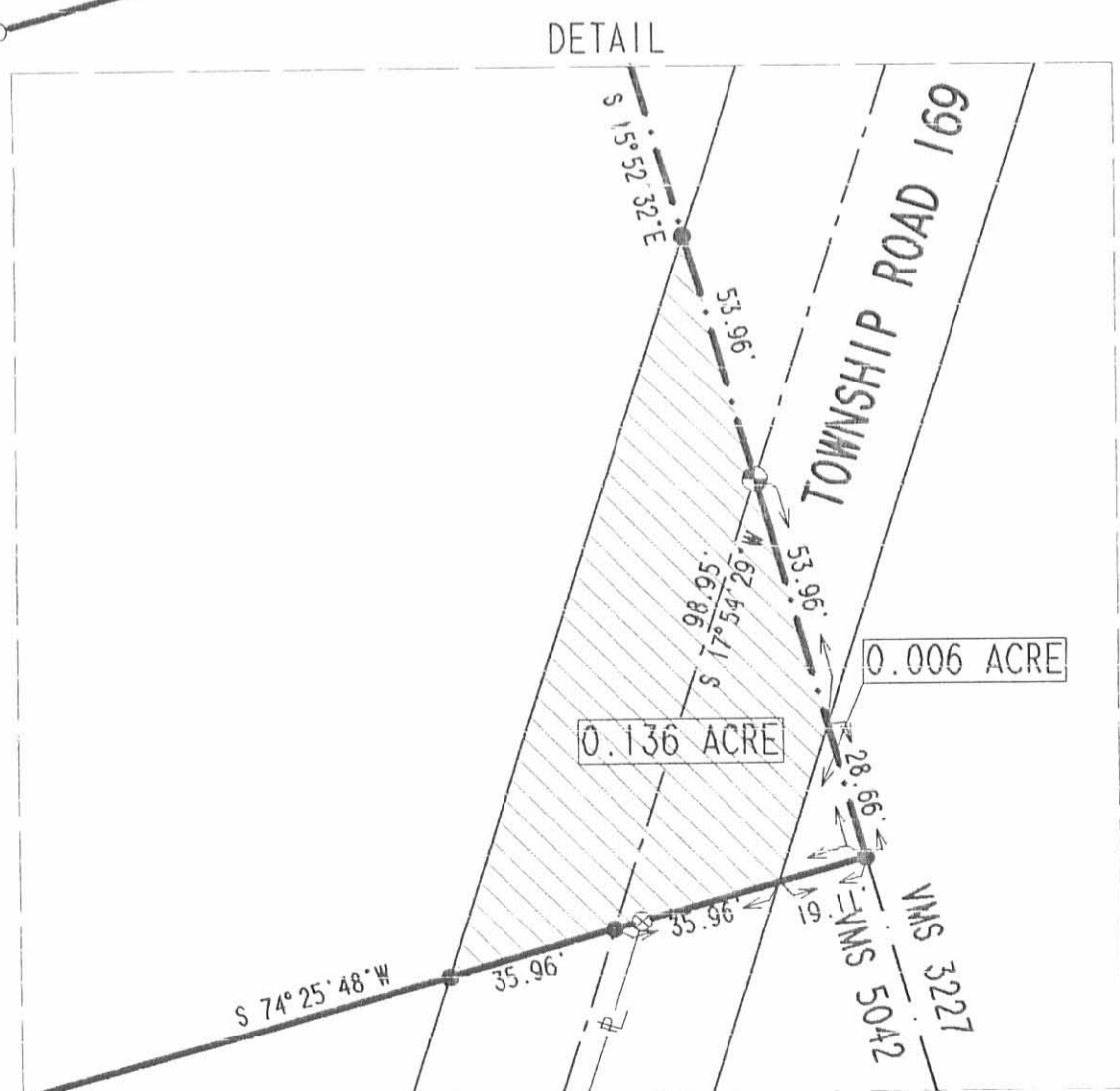
TRACT B  
 19.990 ACRES

DAVID L. ACKLEY, PHYLLIS J. ACKLEY AND HALLEY D. ACKLEY  
 ORIGINAL 40.05 ACRES  
 O.R. 229, PG. 662

BETTY J. SMITH AND  
 ORIG. 104.0 ACRES  
 VOL. 294, PG. 337

CHRISTINA PALMER  
 1.027 ACRES  
 O.R. 440, PG. 762

DAVID C. LINKINHOKER  
 3.00 ACRES  
 VOL. 398, PG. 817



SURVEY OF TWO TRACTS OUT OF THE DAVID L. ACKLEY, PHYLLIS J. ACKLEY AND HALLEY D. ACKLEY ORIGINAL 40.05 ACRES OFFICIAL RECORD 229, PAGE 662 VIRGINIA MILITARY SURVEY 5042 MONROE TOWNSHIP LOGAN COUNTY, OHIO



SURVEYED BY:  
*William K. Bruce*  
 WILLIAM K. BRUCE  
 PROFESSIONAL SURVEYOR 7437  
 JULY 17, 2000

COPYRIGHT 2000 BY:  
 LEE SURVEYING & MAPPING CO., INC.  
 117 North Madriver Street  
 BELLEFONTAINE, OHIO 43311  
 (937) 593-7335

2 WORKING DAYS  
**BEFORE YOU DIG**  
 CALL TOLL FREE **800-362-2764**  
 OHIO UTILITIES PROTECTION SERVICE.

INDEXED ON MAP  
 9328 1P

D 382 ACKLEY L-2986-2