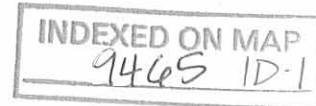


Dec. 1966

LEIB SURVEY
V.M.S. 4493-4525
MONROE TOWNSHIP



April 17, 1967

The following described real estate situated in Monroe Township, Logan County, Ohio and being part of Virginia Military Survey 4493-4525 and more particularly described as follows:

Beginning at an iron bar at the intersection of the center lines of County Highway No. 5 and Monroe Township Road No. 165, said iron bar being Sta. 190+38.7 as shown in Logan County Engineers field book 497, page 68; thence with the center line of said Township Road No. 165 S. 37°53' E. 1338.2 feet to an iron bar; thence continuing with said centerline S. 84°37' E. 340.8 feet to an iron bar; thence continuing with said centerline S. 45°34' E. 56.5 feet to a spike in the center of the bridge over Madriver; thence with the centerline of said Madriver S. 12°38' W. 1100.3 feet; thence with said centerline S. 27°50' W. 81.9 feet; thence with said centerline S. 70°01' W. 375.0 feet; thence continuing with the centerline of said Madriver S. 74°34' W. 2049.6 to the southeast corner of J. Howard Yoder's 99.50 acre tract; thence with said Yoder's east line N. 14°04' W. 1827.4 feet to an iron bar in the center of County Highway No. 5 at the northeast corner of said tract, passing a corner post at 36.0 feet; thence with the centerline of said County Highway No. 5 the following six courses, N. 65°44' E. 990.9 feet to an iron bar; thence N. 59°48' E. 351.4 feet to an iron bar; thence N. 56°19' E. 209.2

Keib Survey continued

feet to an iron bar; thence N. $55^{\circ}06'$ E. 230.6 feet to an iron bar; thence N. $46^{\circ}38'$ E. 287.1 feet to an iron bar; thence N. $26^{\circ}03'$ E. 162.2 feet to the place of beginning.

Containing 123.00 acres more or less.

INDEXED ON MAP
9465 1D-2

REV'D 12-1-03 SMY OK

Lee Surveying and Mapping Co., Inc.

Land Surveys • Topography • Subdivisions • Construction Layout

117 N. Madriver St.
Bellefontaine OH 43311



Phone: (937) 593-7335
Fax: (937) 593-7444

LEIB 123.063 ACRES

Lying in Virginia Military Surveys 4493-4525, Monroe Township, Logan County, Ohio.

Being all of the Joan L. Skidmore, Robert E. Leib, Melvin L. Leib and Doris P. Leib 123.000 acre tract (123.063 acres by this survey) as deeded and described in Official Record 660, Page 475, Tract III of the Logan County Records of Deeds and being more particularly described as follows:

Beginning at a 3/4 inch iron rod found in a monument box at the intersection of the center-lines of Township Road 165 and County Highway 5 at center-line Station 190+38.7 (Logan County Engineer's Field Book 497, Page 68).

THENCE, with the center-line of Township Road 165 (60 feet wide), the following three courses:

- 1.) S 45°-32'-48"E, a distance of 1338.06 feet to a 1 inch iron rod found.
- 2.) N 87°-43'-42"E, a distance of 340.77 feet to a 3/4 inch iron rod found.
- 3.) S 53°-13'-48"E, a distance of 56.52 feet to a point, referenced by a railroad spike found, S 53°-13'-48"E, a distance of 39.33 feet.

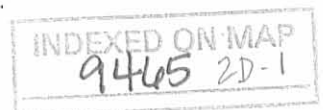
THENCE, with the center-line of Mad River and the northwesterly line of the Don E. Maples, Trustee 67.40 acre tract (O.R. 374, Pg. 674, Parcel 1, Tract 4), the following four courses:

- 1.) S 5°-06'-19"W, a distance of 1120.27 feet to a point, referenced by a 5/8 inch iron rod set, N 85°-05'-41"W, a distance of 38.00 feet.
- 2.) S 35°-56'-53"W, a distance of 106.72 feet to a point, referenced by a 5/8 inch iron rod set, N 27°-05'-04"W, a distance of 45.00 feet.
- 3.) S 63°-26'-24"W, a distance of 338.09 feet to a point, referenced by a 5/8 inch iron rod set, N 23°-12'-39"W, a distance of 42.00 feet.
- 4.) S 66°-57'-29"W, a distance of 2038.59 feet to a point.

THENCE, with the easterly line of the Eric B. Yoder and Teresa A. Yoder 56.093 acre tract (O.R. 442, Pg. 534), N 21°-45'-19"W, a distance of 1827.77 feet to a railroad spike found, passing 5/8 inch iron rods set at 36.00 feet and 1797.29 feet.

THENCE, with the center-line of County Highway 5 (60 feet wide) the following six courses:

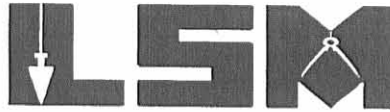
- 1.) N 58°-04'-09"E, a distance of 990.95 feet to a 5/8 inch iron rod found.
- 2.) N 52°-08'-39"E, a distance of 351.38 feet to a 5/8 inch iron rod found.



Lee Surveying and Mapping Co., Inc.

Land Surveys • Topography • Subdivisions • Construction Layout

117 N. Madriver St.
Bellefontaine OH 43311



Phone: (937) 593-7335
Fax: (937) 593-7444

- 3.) N 48°-40'-50"E, a distance of 209.25 feet to a 5/8 inch iron rod found.
- 4.) N 47°-24'-36"E, a distance of 230.69 feet to a 5/8 inch iron rod found.
- 5.) N 39°-00'-41"E, a distance of 287.19 feet to a 5/8 inch iron rod found.
- 6.) N 18°-20'-16"E, a distance of 162.18 feet to the point of beginning.

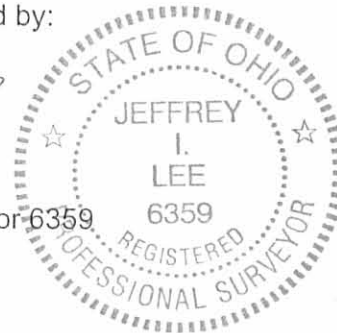
Containing 123.063 acres, of which 2.716 acres are within the highway rights-of-way.

The basis for bearings is the center-line of Township Road 165, being S 45°-32'-48"E, and all other bearings are from angles and distances measured in a field survey by Lee Surveying and Mapping Co., Inc. on November 11, 2003.

Description prepared by:

A handwritten signature in black ink, appearing to read 'Jeffrey I. Lee', is written over the typed name and title.

Jeffrey I. Lee
Professional Surveyor 6359
November 20, 2003

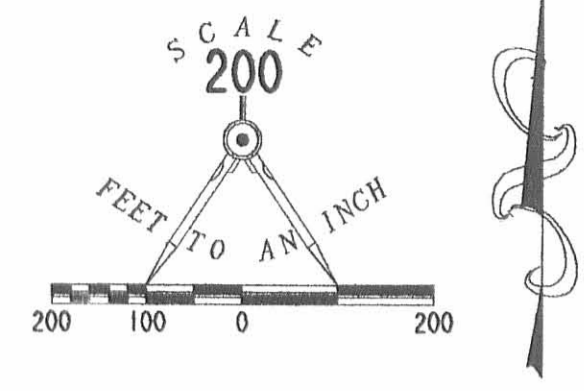


ORIGINAL STAMP IN GREEN

L-3441-B



REC'D 12-1-03 SMY AK



123.063 ACRES
OF WHICH 2.716 ACRES ARE
WITHIN THE HIGHWAY RIGHTS-OF-WAY

- LEGEND**
- 5/8 INCH IRON ROD SET
 - 5/8 INCH IRON ROD FOUND
 - 1 INCH IRON PIPE FOUND
 - ⊗ RAILROAD SPIKE FOUND
 - ⊙ 3/4 INCH IRON ROD FOUND
 - ⊠ 3/4 INCH IRON ROD FOUND IN A MONUMENT BOX

DON E. MAPLES, TRUSTEE
MARYLYN JOAN MAPLES, TRUSTEE
67.40 ACRE TRACT
O.R. 374, PG. 674
PARCEL 1, TRACT 4

**RETRACEMENT SURVEY OF
THE JOAN L. SKIDMORE, ROBERT E. LEIB
MELVIN L. LEIB AND DORIS P. LEIB
123.000 ACRE TRACT
(123.063 ACRES BY THIS SURVEY)
OFFICIAL RECORD 660, PAGE 475, TRACT III
VIRGINIA MILITARY SURVEY 4493-4525
MONROE TOWNSHIP
LOGAN COUNTY, OHIO**

I HEREBY STATE TO THE TITLE COMPANY, LTD.
THAT I HAVE SURVEYED THE PROPERTY IN THE
FOREGOING TITLE CAPTION AND THAT SAID SURVEY
IS TRUE AND ACCURATE TO THE BEST OF MY
KNOWLEDGE AND BELIEF.

DON E. MAPLES, TRUSTEE
MARYLYN JOAN MAPLES, TRUSTEE
67.40 ACRE TRACT
O.R. 374, PG. 674
PARCEL 1, TRACT 4

ERIC B. YODER
TERESA A. YODER
56.093 ACRE TRACT
O.R. 442, PG. 534



Jeffrey L. Lee
JEFFREY L. LEE
PROFESSIONAL SURVEYOR 6359
NOVEMBER 11, 2003

COPYRIGHT 2003 BY:
LEE SURVEYING & MAPPING CO., INC.
117 North Madriver Street
BELLEFONTAINE, OHIO 43311
(937) 593-7335

2 WORKING DAYS
BEFORE YOU DIG
CALL TOLL FREE **800-362-2764**
OHIO UTILITIES PROTECTION SERVICE.

INDEXED ON MAP
9445 2P

REC'D 5-13-04 SUM OK

Lee Surveying and Mapping Co., Inc.

Land Surveys • Topography • Subdivisions • Construction Layout

117 N. Madriver St.
Bellefontaine OH 43311



Phone: (937) 593-7335
Fax: (937) 593-7444

BRAGG 0.564 ACRE

Lying in Virginia Military Surveys 4493-4525, Monroe Township, Logan County, Ohio.

Being out of the Roy L. Bragg and Patsy E. Bragg original 123.063 acre tract as deeded and described in Official Record 691, Page 720 of the Logan County Records of Deeds and being more particularly described as follows:

Beginning at a 1 inch iron bar found on the center-line of County Highway 5 (60 feet wide) and the northeast corner of the Eric B. Yoder 56.093 acre tract (O.R. 442, Pg. 534).

THENCE, N 58°-04'-09"E, a distance of 588.30 feet to a MAG nail found.

THENCE, with the lines of the Doris P. Leib 6.678 acre tract (O.R. 704, Pg. 136), the following four courses:

S 24°-12'-24"E, a distance of 977.92 feet to a 5/8 inch iron rod found, passing a 5/8 inch iron rod found at 30.27 feet.

N 58°-04'-09"E, a distance of 37.50 feet to a 5/8 inch iron rod found.

S 30°-39'-40"E, a distance of 332.53 feet to a 5/8 inch iron rod found.

S 51°-59'-21"W, a distance of 293.82 feet to a 5/8 inch iron rod set at the TRUE POINT OF BEGINNING.

THENCE, S 29°-06'-44"E, a distance of 176.33 feet to a 5/8 inch iron rod set.

THENCE, S 59°-00'-54"W, a distance of 153.90 feet to a 5/8 inch iron rod set.

THENCE, N 24°-12'-24"W, a distance of 160.00 feet to a 5/8 inch iron rod found.

THENCE, with the south line of the aforementioned 6.678 acre tract, N 51°-59'-21"E, a distance of 141.85 feet to the point of beginning.

Containing 0.564 acre.

The basis for bearings is the center-line of County Highway 5, being N 58°-04'-09"E, and all other bearings are from angles and distances measured in a field survey by Lee Surveying and Mapping Co., Inc. on May 6, 2004 and May 10, 2004.

Description prepared by:



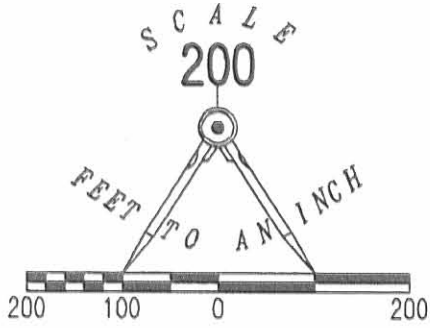
ORIGINAL STAMP IN GREEN

Jeffrey I. Lee
Jeffrey I. Lee
Professional Surveyor 6359
May 6, 2004
Revised May 10, 2004

L-3441



BEID 5-13-04 SMY OK

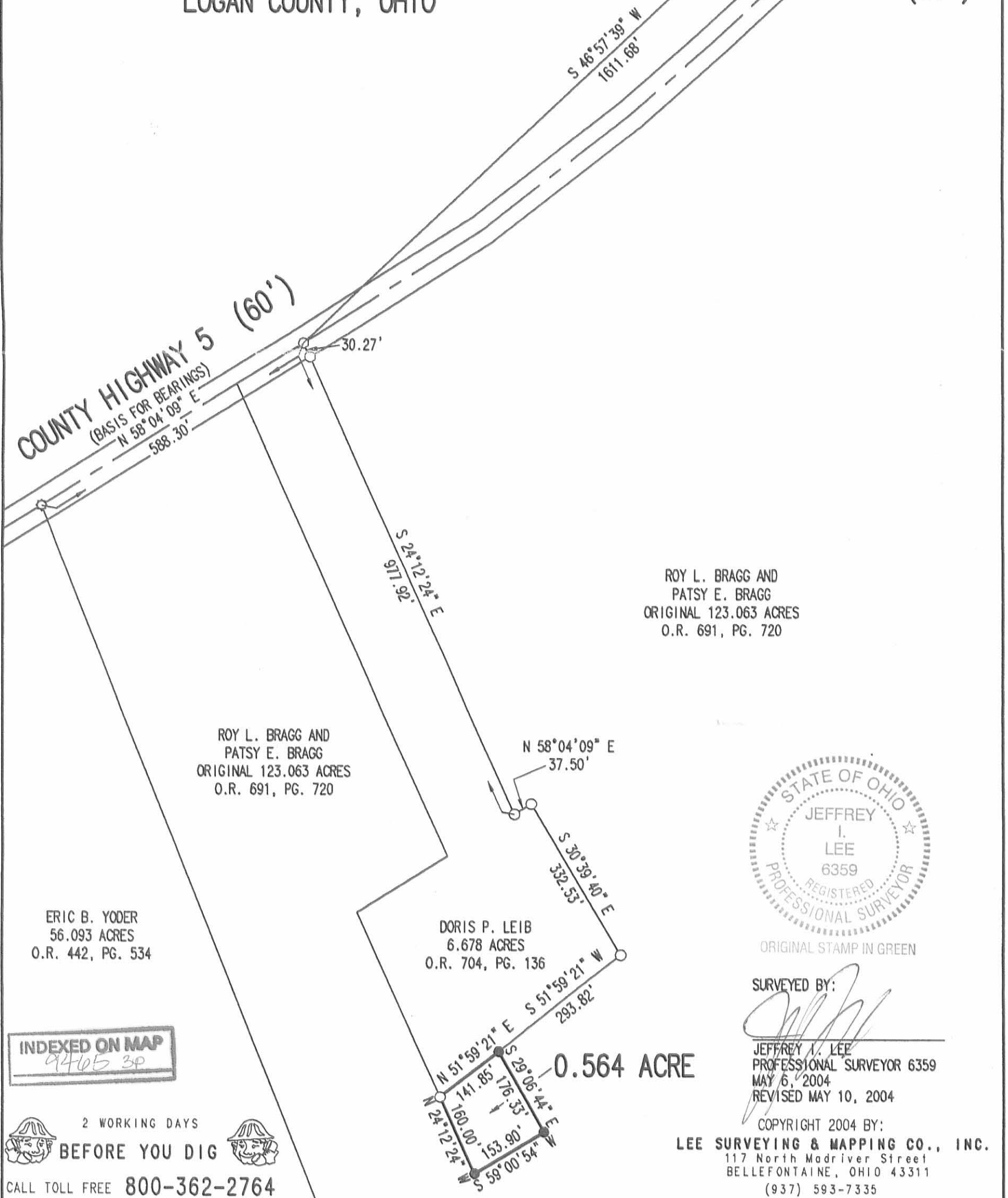


LEGEND:

- 5/8 INCH IRON ROD FOUND
- 5/8 INCH IRON ROD SET
- ⊗ MAG NAIL FOUND
- ⊙ 1 INCH IRON BAR FOUND
- ⊠ 3/4 INCH IRON ROD FOUND IN MONUMENT BOX

SURVEY OF 0.564 ACRE OUT OF THE
ROY L. BRAGG AND PATSY E. BRAGG
ORIGINAL 123.063 ACRE TRACT
OFFICIAL RECORD 691, PAGE 720
VIRGINIA MILITARY SURVEYS 4493-4525
MONROE TOWNSHIP
LOGAN COUNTY, OHIO

TOWNSHIP
ROAD 165
(60')



ROY L. BRAGG AND
PATSY E. BRAGG
ORIGINAL 123.063 ACRES
O.R. 691, PG. 720

ROY L. BRAGG AND
PATSY E. BRAGG
ORIGINAL 123.063 ACRES
O.R. 691, PG. 720

ERIC B. YODER
56.093 ACRES
O.R. 442, PG. 534

DORIS P. LEIB
6.678 ACRES
O.R. 704, PG. 136

0.564 ACRE



ORIGINAL STAMP IN GREEN

SURVEYED BY:

Jeffrey I. Lee
JEFFREY I. LEE
PROFESSIONAL SURVEYOR 6359
MAY 6, 2004
REVISED MAY 10, 2004

COPYRIGHT 2004 BY:

LEE SURVEYING & MAPPING CO., INC.
117 North Madriver Street
BELLEFONTAINE, OHIO 43311
(937) 593-7335

INDEXED ON MAP
9405 3P

2 WORKING DAYS
BEFORE YOU DIG
CALL TOLL FREE 800-362-2764
OHIO UTILITIES PROTECTION SERVICE.

Lee Surveying and Mapping Co., Inc.

Land Surveys • Topography • Subdivisions • Construction Layout

117 N. Madriver St.
Bellefontaine OH 43311



Phone: (937) 593-7335
Fax: (937) 593-7444

BRAGG 6.678 ACRES

Lying in Virginia Military Surveys 4493-4525, Monroe Township, Logan County, Ohio

Being out of the Roy L. Bragg and Patsy E. Bragg original 123.063 acre tract as deeded and described in Official Record 691, Page 720, of the Logan County Records of Deeds and being more particularly described as follows:

Beginning at a 1 inch iron bar found on the center-line of County Highway 5 and the northeast corner of the Eric B. Yoder and Teresa A. Yoder 56.093 acre tract, (O.R. 442, Pg. 534).

THENCE, N 58°-04'-09"E, a distance of 438.30 feet to a MAG nail set in the center-line of County Highway 5 at the TRUE POINT OF BEGINNING.

THENCE, N 58°-04'-09"E, with the center-line of County Highway 5, a distance 150.00 feet to a MAG nail set.

THENCE, S 24°-12'-24"E, a distance of 977.92 feet to a 5/8 inch iron rod set, passing a 5/8 inch iron rod set at 30.27 feet.

THENCE, N 58°-04'-09"E, a distance of 37.50 feet to a 5/8 inch iron rod set.

THENCE, S 30°-39'-40"E, a distance of 332.53 feet to a 5/8 inch iron rod set.

THENCE, S 51°-59'-21"W, a distance of 435.67 feet to a 5/8 inch iron rod set.

THENCE, N 24°-12'-24"W, a distance of 382.06 feet to a 5/8 inch iron rod set.

THENCE, N 58°-04'-09"E, a distance of 201.74 feet to a 5/8 inch iron rod set.

THENCE, N 24°-12'-24"W, a distance of 977.92 feet to the point of beginning, passing a 5/8 inch iron rod set at 947.65 feet.

Containing 6.678 acres, of which 0.103 acre is within the highway right-of-way.

The basis for bearings is the center-line of County Highway 5, being N 58°-04'-09"E, and all other bearings are from angles and distances measured in a field survey by Lee Surveying and Mapping Co., Inc. on January 6, 2004.

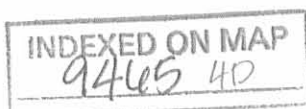
Description prepared by:

Jeffrey I. Lee
Professional Surveyor 6359
January 8, 2004

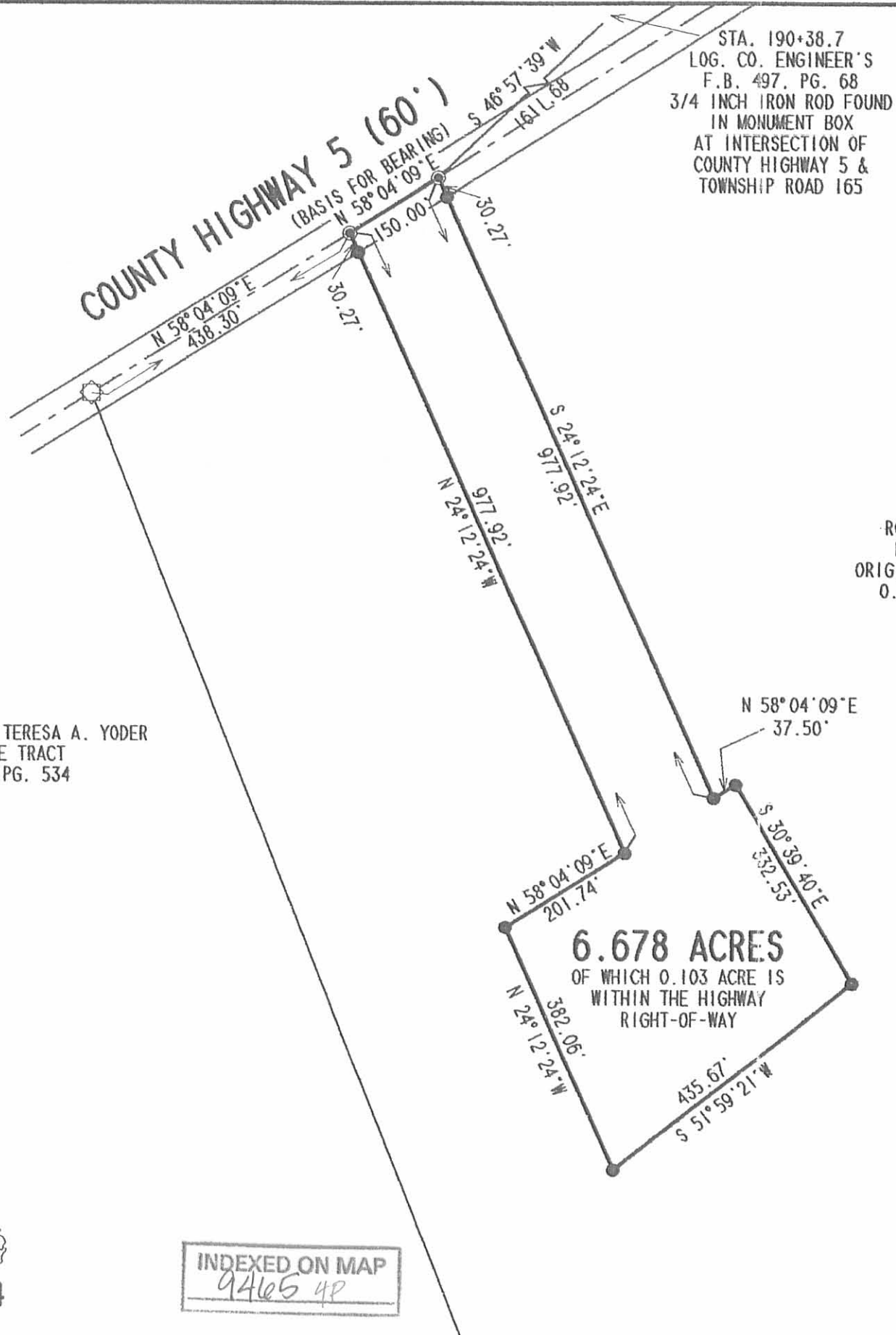


ORIGINAL STAMP IN GREEN

L-3441



REC'D 1-14-04 smjok



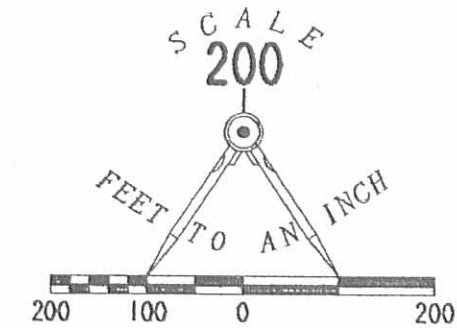
STA. 190+38.7
 LOG. CO. ENGINEER'S
 F.B. 497, PG. 68
 3/4 INCH IRON ROD FOUND
 IN MONUMENT BOX
 AT INTERSECTION OF
 COUNTY HIGHWAY 5 &
 TOWNSHIP ROAD 165

ROY L. BRAGG AND
 PATSY E. BRAGG
 ORIGINAL 123.063 ACRES
 O.R. 691, PG. 720

ERIC B. YODER AND TERESA A. YODER
 56.093 ACRE TRACT
 O.R. 442, PG. 534

LEGEND:

- 5/8 INCH IRON ROD SET
- ⊙ MAG NAIL SET
- ⊙ 1" IRON BAR FOUND



SURVEY OF 6.678 ACRES OUT OF
 THE ROY L. BRAGG AND
 PATSY E. BRAGG
 ORIGINAL 123.063 ACRE TRACT
 OFFICIAL RECORD 691, PAGE 720
 VIRGINIA MILITARY SURVEYS 4493-4525
 MONROE TOWNSHIP
 LOGAN COUNTY, OHIO

2 WORKING DAYS
BEFORE YOU DIG
 CALL TOLL FREE **800-362-2764**
 OHIO UTILITIES PROTECTION SERVICE.

INDEXED ON MAP
 9465 4P



ORIGINAL STAMP IN GREEN

SURVEYED BY:

(Signature)
 JEFFREY I. LEE
 PROFESSIONAL SURVEYOR 6359
 JANUARY 6, 2004

COPYRIGHT 2004 BY:
LEE SURVEYING & MAPPING CO., INC.
 117 North Madriver Street
 BELLEFONTAINE, OHIO 43311
 (937) 593-7335

D411 GRBBIA L-3441-3