

3-13-14

Lee Surveying and Mapping Co., Inc.



Land Surveys • Topography • Subdivisions • Construction Layout

117 N. Madriver St.
Bellefontaine OH 43311



Phone: (937) 593-7335
Fax: (937) 593-7444
surveys@lsminc.us

KIMBALL 109.464 ACRES

Lying in Section 24, Town 5, Range 13, Monroe Township, Logan County, Ohio.

Being all of the Philip Kimball 105.615 acre tract as deeded and described in Official Record 218, Page 497 of the Logan County Records of Deeds and being more particularly described as follows:

Commencing on a re-survey monument found in a monument box (Logan County Engineer's Field Book 660, Page 60) on the east line of Section 24 (Ludlow Line) and the northwest corner of Virginia Military Survey 9793 on the intersection of the center-lines of County Highway 1 and Township Road 190.

THENCE, with the east line of Section 24 and the west line of Virginia Military Survey 9793 and with the center-line of County Highway 1 (60 feet wide), S 15°-09'-20"E, a distance of 1959.39 feet to a MAG nail set at the TRUE POINT OF BEGINNING.

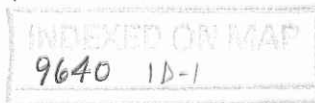
THENCE, with the east line of Section 24 and the west line of Virginia Military Survey 9793 and with the center-line of County Highway 1, S 15°-09'-20"E, a distance of 1484.13 feet to a MAG nail set, passing a re-survey monument found (Logan County Engineer's Field Book 660, Page 61) at 1434.67 feet.

THENCE, with the lines of the Yoder Cemetery 3/8 acre tract (Vol. 81, Pg. 272), the following two courses:

N 85°-03'-28"W, a distance of 213.12 feet to a 8 inch concrete post found, passing a 5/8 inch iron rod set at 31.94 feet.

S 15°-36'-12"E, a distance of 99.13 feet to a 5/8 inch iron rod set.

THENCE, with the north line of the Richard Y. Kimball 82.359 acre tract (O.R. 522, Pg. 530), N 85°-26'-05"W, a distance of 3281.02 feet to a 12 inch concrete post found on the west line of Section 24 and Monroe Township and the east line of Section 30 and Liberty Township.



Lee Surveying and Mapping Co., Inc.

Land Surveys • Topography • Subdivisions • Construction Layout

117 N. Madriver St.
Bellefontaine OH 43311



Phone: (937) 593-7335
Fax: (937) 593-7444
surveys@lsminc.us

THENCE, with the west line of Section 24 and Monroe Township and the east line of Section 30 and Liberty Township and the east lines of the David L. Turner 78.095 acre tract (O.R. 1025, Pg. 695) and the William R. Thomas 50 acre tract (Vol. 327, Pg. 358), N 04°-55'-44"E, a distance of 1493.47 feet to a 10 inch concrete post found.

THENCE, with the south line of the Roy L. Bragg 114.049 acre tract (O.R. 1030, Pg. 296), the following two courses:

S 84°-59'-44"E, a distance of 1643.40 feet to a 5/8 inch iron rod set.

S 85°-46'-49"E, a distance of 1306.35 feet to the point of beginning, passing a 5/8 inch iron rod set at 1275.55 feet.

Containing 109.464 acres, of which 1.022 acres are within the highway right-of-way.

Property is subject to any and all previous easements and rights-of-way of record.

The basis for bearings is the east line of Section 24 (Ludlow Line), the west line of Virginia Military Survey 9793 and the center-line of County Highway 1, being S 15°-09'-20"E, and all other bearings are from angles and distances measured in a field survey by Lee Surveying and Mapping Co., Inc. on March 3, 2014.

Description prepared by:

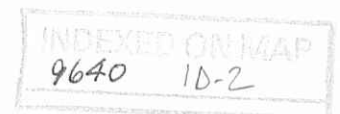


ORIGINAL STAMP IN GREEN

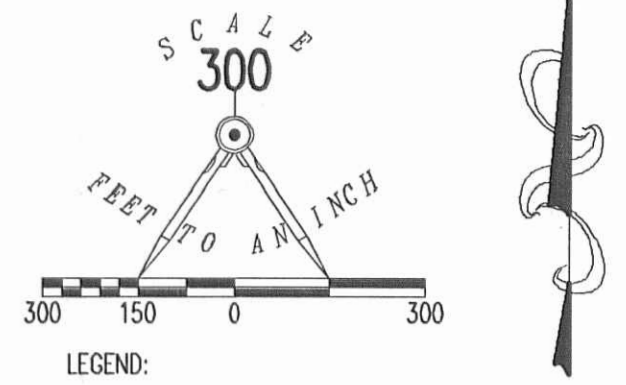
William K. Bruce

William K. Bruce
Professional Surveyor 7437
March 4, 2014

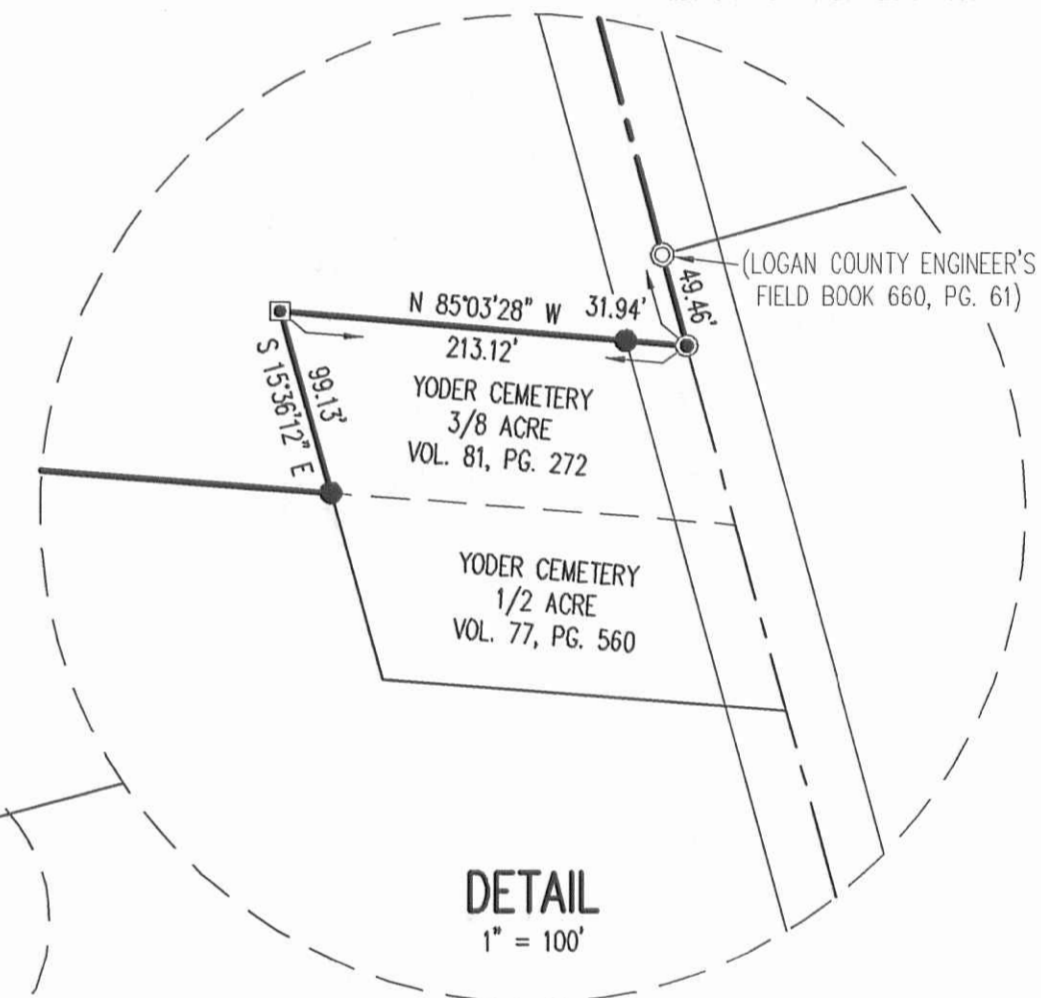
56950214



APPROVED

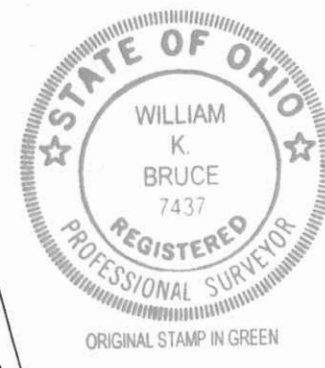


- LEGEND:
- ☒ STONE FOUND IN MONUMENT BOX
 - ⊙ RE-SURVEY MONUMENT FOUND IN A MONUMENT BOX
 - ⊙ RE-SURVEY MONUMENT FOUND
 - 8 INCH CONCRETE POST FOUND
 - 10 INCH CONCRETE POST FOUND
 - ⊠ 12 INCH CONCRETE POST FOUND
 - ⊕ 1/2 INCH IRON ROD FOUND
 - ⊗ RAILROAD SPIKE FOUND
 - MAG NAIL SET
 - 5/8 INCH IRON ROD SET WITH PLASTIC I.D. CAP STAMPED "LSM 7437"



**SURVEY OF THE
PHILIP KIMBALL
105.615 ACRE TRACT
OFFICIAL RECORD 218, PAGE 497
SECTION 24, TOWN 5, RANGE 13
MONROE TOWNSHIP
LOGAN COUNTY, OHIO**

SURVEYED BY:
William K. Bruce
WILLIAM K. BRUCE
PROFESSIONAL SURVEYOR 7437
MARCH 3, 2014



COPYRIGHT 2014 BY:
LEE SURVEYING & MAPPING CO., INC.
117 North Modriver Street
BELLEFONTAINE, OHIO 43111
(937) 593-7335
www.lsminc.us
surveys@lsminc.us
KSS D0214 56950214 L-5695-2

2 WORKING DAYS
BEFORE YOU DIG
CALL TOLL FREE **800-362-2764**
OHIO UTILITIES PROTECTION SERVICE

INDEXED ON MAP
9640 1P