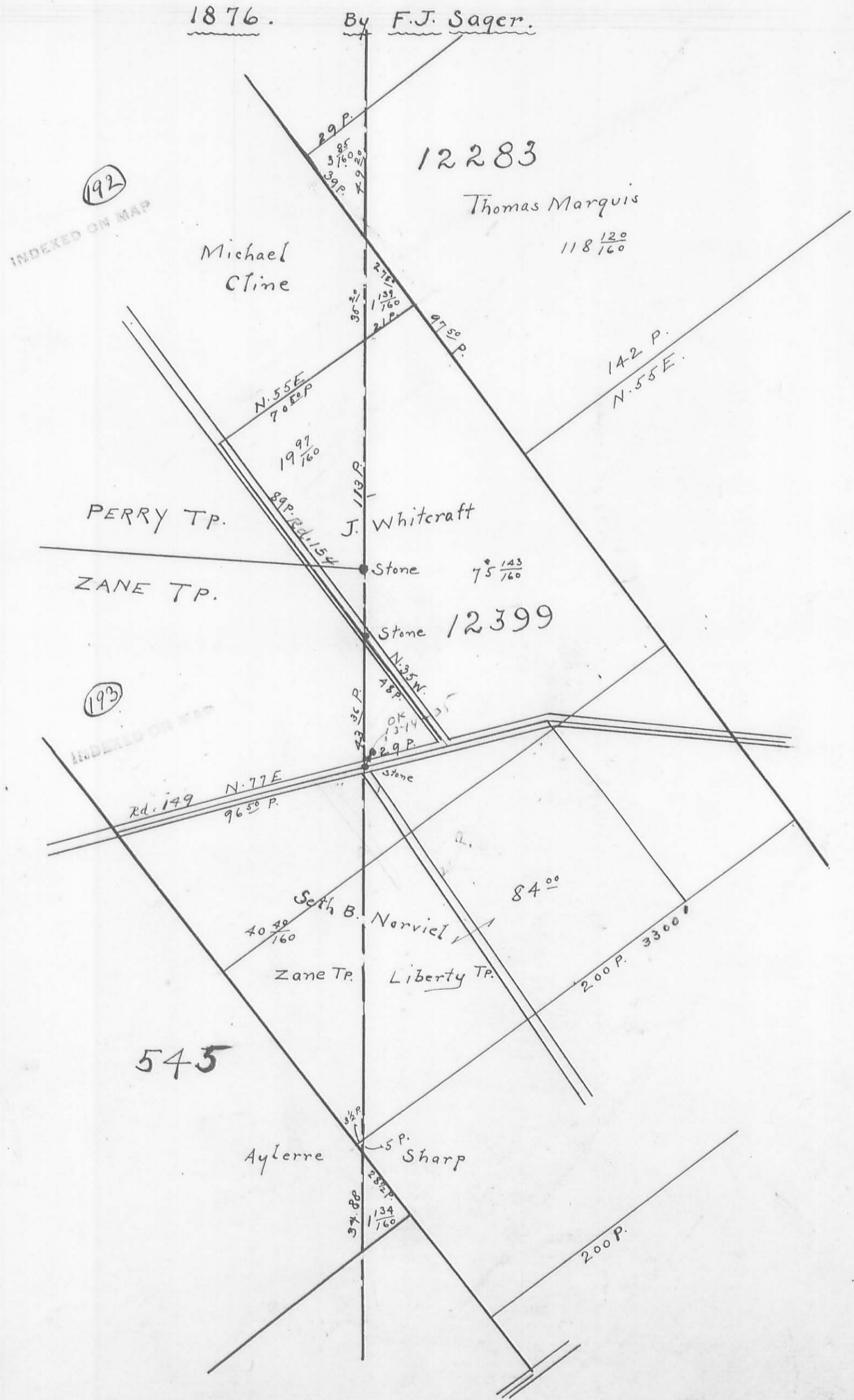


COUNTY LINE SURVEY

1876. By F.J. Sager.



$\frac{43.86}{1.25}$
 $\frac{21.93}{1.25}$
 $\frac{17.54}{1.25}$
 $\frac{71.73}{1.25}$

$\frac{97.50}{31}$
 $\frac{4134.50}{344}$

$\frac{4177.50}{8}$
 $\frac{17}{16}$