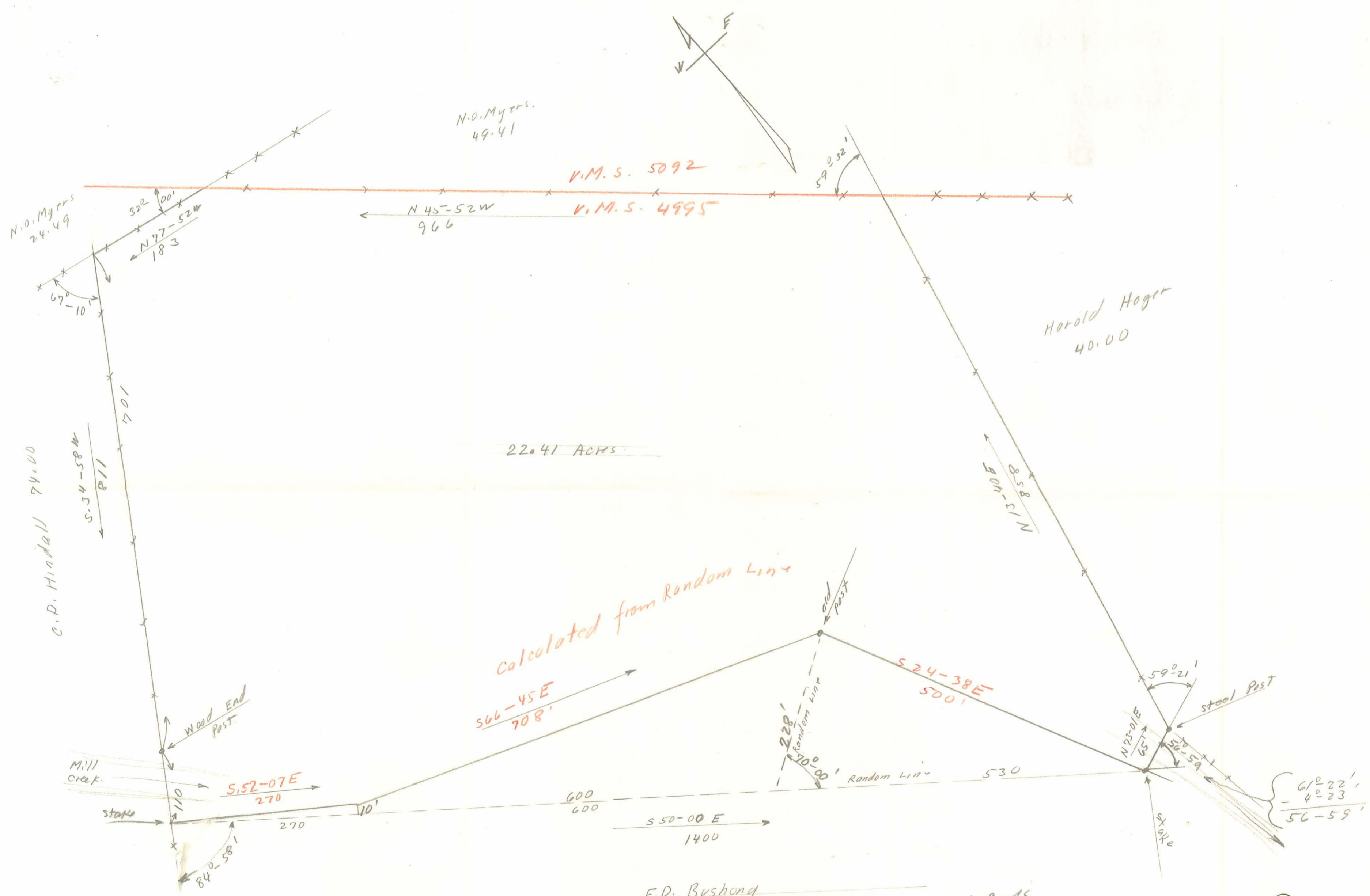


Bushong Survey Perry Twp. V.M.S. 4995 June 1945 22.41 Acres.

The following described land in V.M.S. 4995 and being in Perry Township Logan County Ohio.

Beginning at a post in the North line of V.M.S. 4995 at the S.E. corner of N.O.Myers 24.49 acre tract and also being the N.W. corner of Harold Hager 26.10 acre tract thence with the South line of said N.O.Myers 24.49 acre tract N.  $77^{\circ}$  -  $52'$  W. 183 feet to a post at the N.E. corner of C.D. Hindall 74.40 acre tract thence with the East line of said Hindall tract S.  $34^{\circ}$  -  $58'$  W. 811 feet to a stake the last described line passing a large wood end post on the North bank of Mill Creek at 701 feet thence S.  $52^{\circ}$  -  $07'$  E. 270 feet thence S.  $66^{\circ}$  -  $45'$  E. 708 feet to a large wood angle post thence S.  $24^{\circ}$  -  $38'$  E. 500 feet to a stake on the South bank of Mill Creek thence N.  $73^{\circ}$  -  $38'$  E. 65 feet to a steel post in the West line of Harold Hager ~~40.00~~ acre tract the last described line passing across Mill Creek thence with the West line of said Hager 40.00 acre tract N.  $13^{\circ}$  -  $40'$  E. 858 feet to a post at the N.W. corner of Hager 40.00 acre tract and also being in the North line of V.M.S. 4995 thence with the North line of V.M.S. 4995 N.  $45^{\circ}$  -  $52'$  W. 966 feet to the place of beginning said tract containing 22.41 acres.

1975 15



This copy  
for County Eng. office

Book FW-12  
Page 173

F.D. Bushong  
Perry Twp.  
June 1945  
Greater Wilgus  
E.F. Wright  
1" = 100'

1942 Plat Book  
H.C. Hines = 72.81 Acres  
- 22.41  
50.40

1975 IP