

C. H. Co. A
Miami Twp.

Sta. Perry Twp - Shelby Co.
Stakes set 30' R. & Lt. of $\frac{1}{4}$
for 60' R/W

0+00 Hubs set for Mon. - spk on $\frac{1}{4}$

1+00 Hubs set for Mon. - spk on $\frac{1}{4}$

0+00 Iron pin set on line between Iron
& C.H. 70 & Stone $\frac{1}{4}$ 32.706
& on North R/W line of C.C. 4212

Indexed

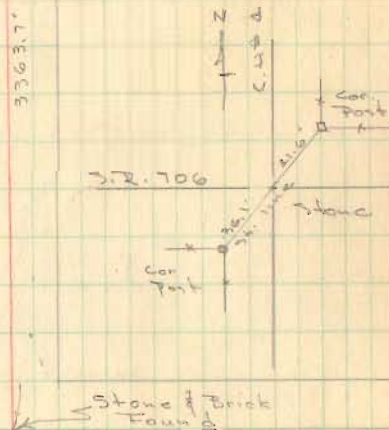
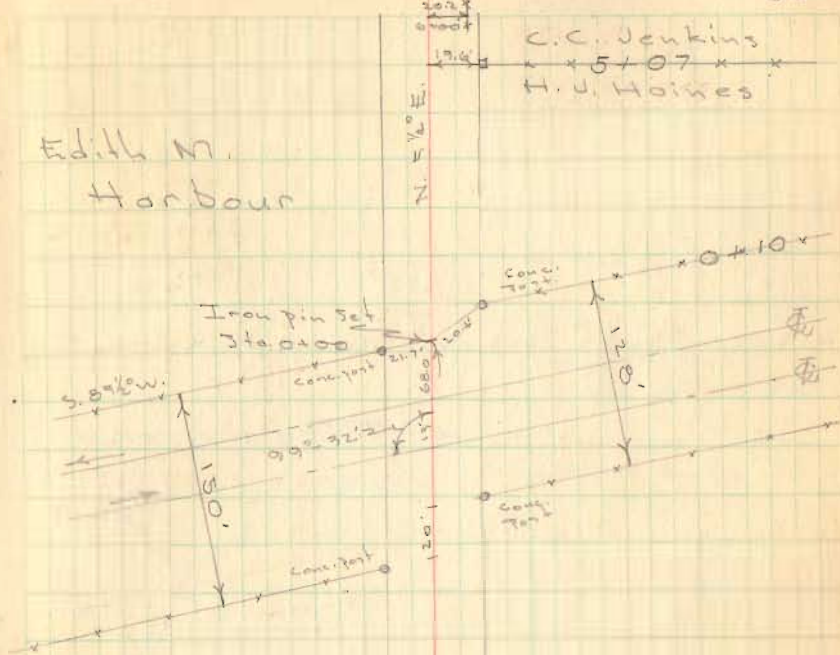
D. Dodson
T. Richardson

F. Webster
D. Craig

Aug. 10, 1945
Cloudy

59

Edith M.
Harbour



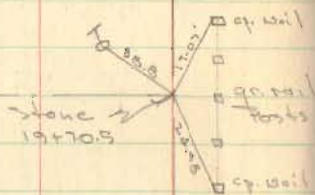
S.F. # 706
See S.F. # 596
pp. 45

Stone & Brick
Found

C. H. No 4
Miami Twp.

21:00 Hubs Set for Man's - spk on #

← To Pemberton



10:00 Hubs Set for Man's - spk on #



11:00 Hubs Set for Man's - spk on #

Aug. 11, 1955
cloudy cool 60

Sec. 6 T-2 R-13

Co.

O.T. # 11A

Fog

N. 5 1/2° E.

R. F. Staley
Sta. 21+101
C. A. Wise
Sta. 19+70.5
Angle 0°-05' E.

Sec. line
C. H. # 18

89°37'

90°20'

← Iron over Stone
(Pointed Granite, drill hole
in top)

Co.

Sec. 35, T-3 R-13

C. H. # 70

*Iron Found
Sta. 15+32.1
No angle 2

SHELBY

Sec. 5 T-2 R-13

N. 5 1/2° E.

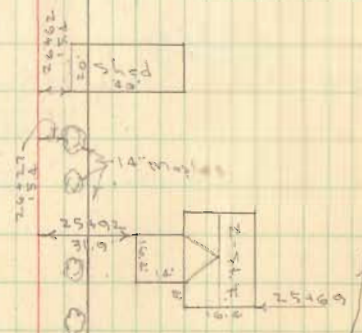
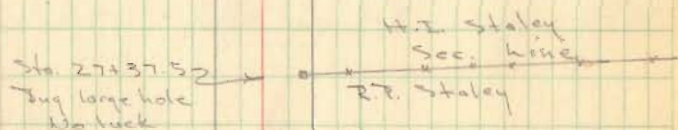
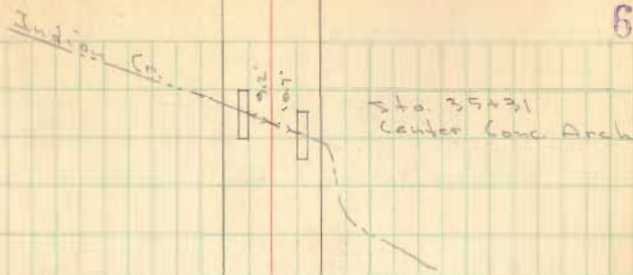
LOGAN

11:00

C. H. No. 4
Miami Twp.

29+50 Hubs Set for Main - 3pk. on S

O. V. & A. E. Fry



C. H. Co. A

60+00 Hubs Set for Mon. 7pk on Φ

55+00 Hubs Set for Mon. 7pk on Φ

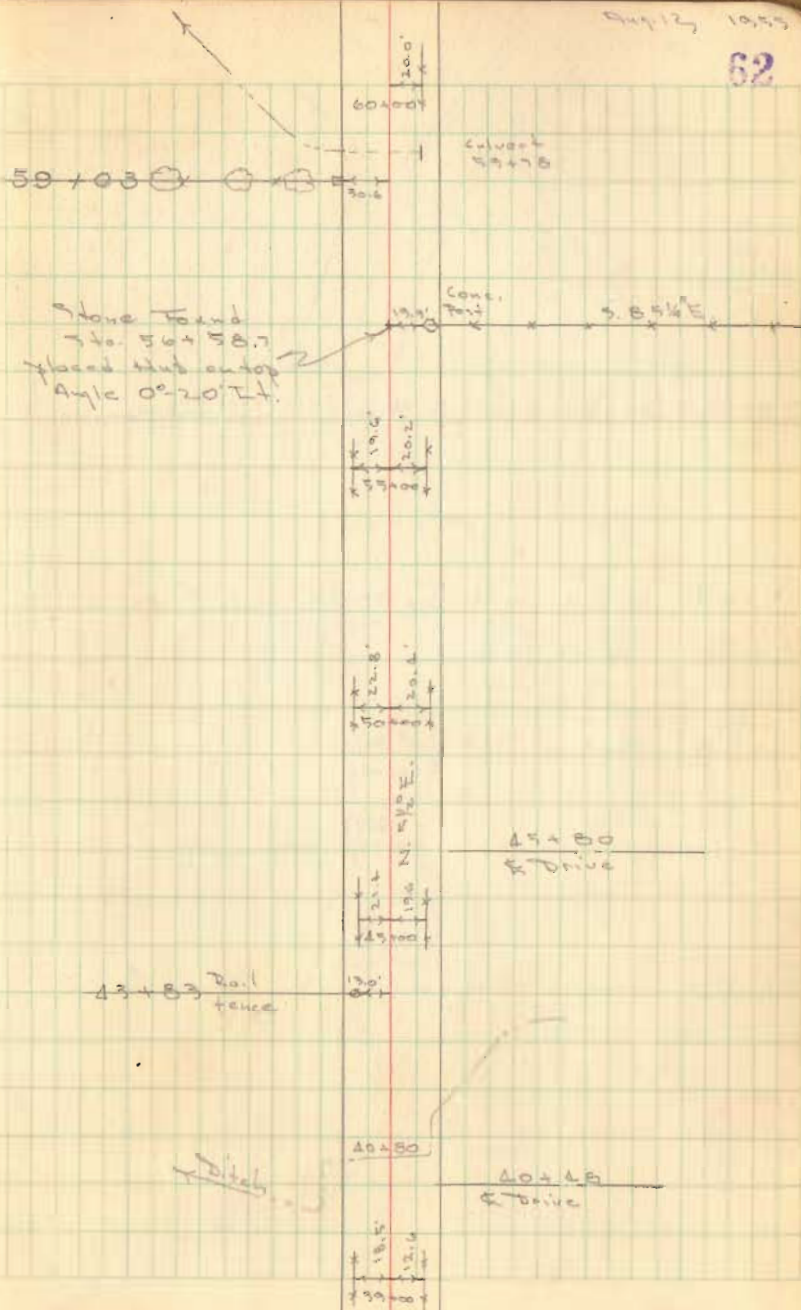
50+00 Hubs Set for Mon. 7pk on Φ

45+00 Hubs Set for Mon. 7pk on Φ

39+00 Hubs Set for Mon. 7pk on Φ

Aug 13, 1955

62



80+14.3 Hubs set for Mon's. $\frac{3}{4}$ " Iron on Φ

77+49.7 Hubs set for Mon's. $\frac{3}{4}$ " Iron on Φ

71+50 Hubs set for Mon's. spk on Φ

65+00 Hubs set for Mon's. spk on Φ

Dedron
Richardson
Craig
Saw's Brother

Sta. 81+46.5
S. end of Bridge

Aug. 15, 1959
80° 63

