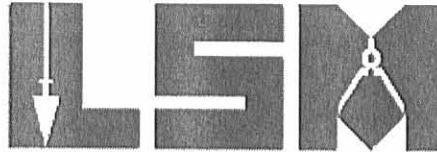


Lee Surveying and Mapping Co., Inc.

Land Surveys • Topography • Subdivisions • Construction Layout

117 N. Madriver St.
Bellefontaine OH 43311



Phone: (937) 593-7335
Fax: (937) 593-7444

SEILING, TRUSTEE 1.610 ACRES

Lying in Virginia Military Survey 4995, Perry Township, Logan County, Ohio.

Being out of the John Y. Seiling, Trustee, original 47.34 acre tract as deeded and described in Official Record 47, Page 754, Tract I of the Logan County Records of Deeds and being more particularly described as follows:

Commencing on a 5/8 inch iron rod found on the center-line of County Highway 2 at center-line Station 373+69 (Logan County Engineer's Field Book 579, Page 73).

THENCE, with the center-line of County Highway 2 (50 feet wide), N 79°-56'-00"W, a distance of 648.71 feet to a MAG nail found at the TRUE POINT OF BEGINNING.

THENCE, with the center-line of County Highway 2, N 79°-56'-00"W, a distance of 154.00 feet to a MAG nail set.

THENCE, N 19°-37'-01"E, a distance of 461.69 feet to a 5/8 inch iron rod set, passing a 5/8 inch iron rod set at 25.35 feet.

THENCE, S 79°-56'-00"E, a distance of 154.00 feet to a 5/8 inch iron rod found.

THENCE, with the west line of the Bobee Cheryl Hutchison 2.500 acre tract (O.R. 654, Pg. 920), S 19°-37'-01"W, a distance of 461.69 feet to the point of beginning, passing a 5/8 inch iron rod found at 436.34 feet.

Containing 1.610 acres, of which 0.088 acre is within the highway right-of-way.

The basis for bearings is the center-line of County Highway 2 west of center-line Station 373+69, being N 79°-56'-00"W, and all other bearings are from angles and distances measured in a field survey by Lee Surveying and Mapping Co., Inc. on March 12, 2008.



ORIGINAL STAMP IN GREEN

Description prepared by:

William K. Bruce
Professional Surveyor 7437
March 13, 2008



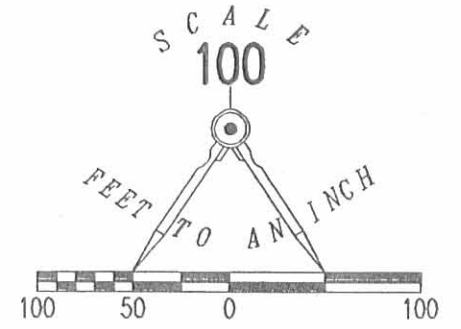
2276038

REC'D 3-13-08 SWM OK

JOHN Y. SEILING, TRUSTEE
ORIGINAL 47.34 ACRES
O.R. 47, PG. 754
TRACT I

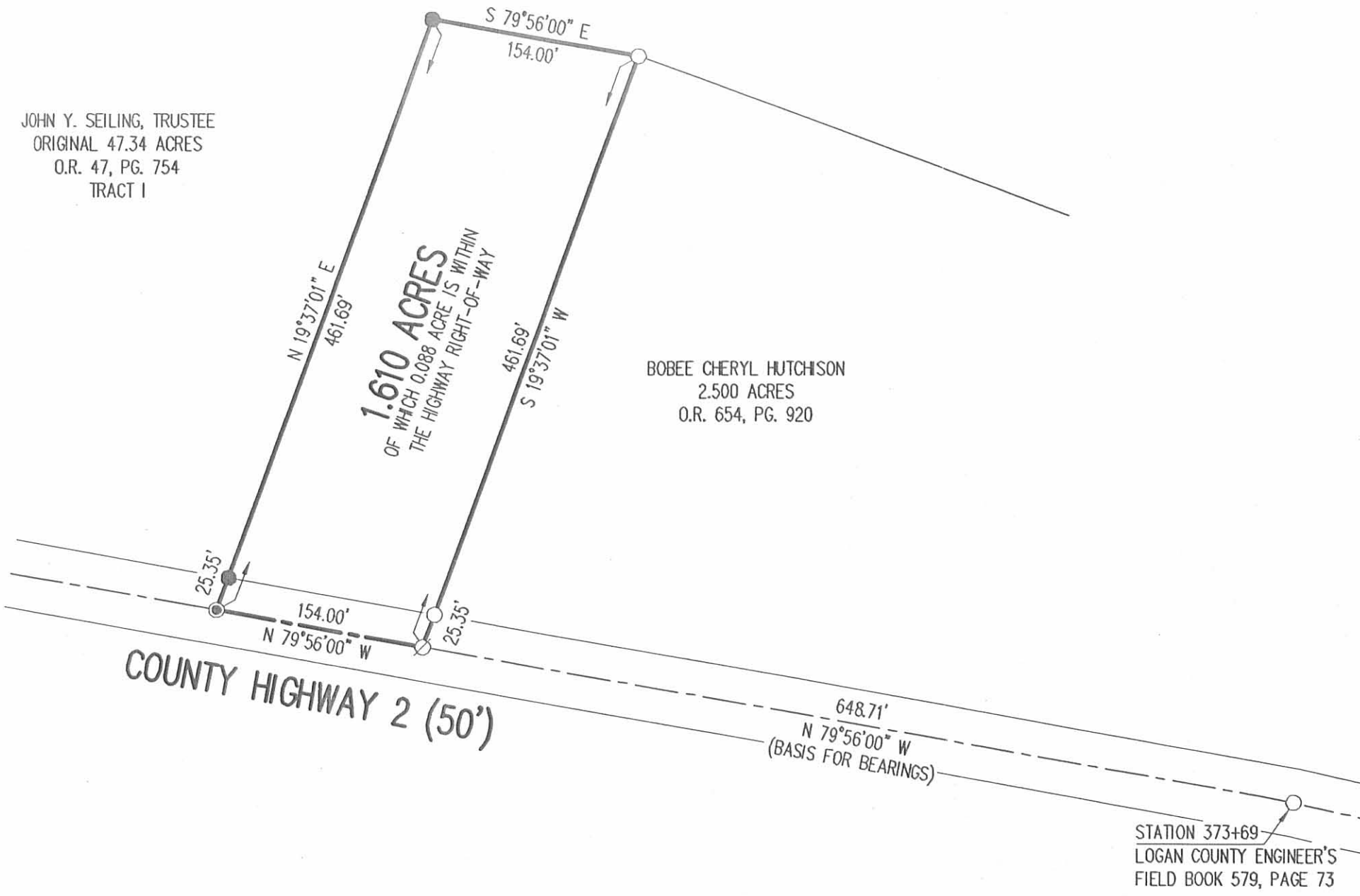
JOHN Y. SEILING, TRUSTEE
ORIGINAL 47.34 ACRES
O.R. 47, PG. 754
TRACT I

BOBEE CHERYL HUTCHISON
2.500 ACRES
O.R. 654, PG. 920



LEGEND:

- ⊙ MAG NAIL FOUND
- MAG NAIL SET
- 5/8 INCH IRON ROD FOUND
- 5/8 INCH IRON ROD SET

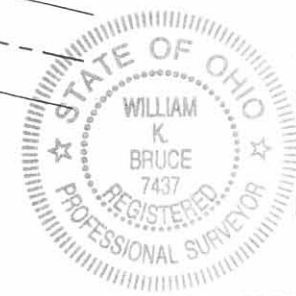


**SURVEY OF 1.610 ACRES OUT OF THE
JOHN Y. SEILING, TRUSTEE
ORIGINAL 47.34 ACRE TRACT
OFFICIAL RECORD 47, PAGE 754
TRACT I
VIRGINIA MILITARY SURVEY 4995
PERRY TOWNSHIP
LOGAN COUNTY, OHIO**

SURVEYED BY:

William K. Bruce
WILLIAM K. BRUCE
PROFESSIONAL SURVEYOR 7437
MARCH 12, 2008

STATION 373+69
LOGAN COUNTY ENGINEER'S
FIELD BOOK 579, PAGE 73



COPYRIGHT 2008 BY:
LEE SURVEYING & MAPPING CO., INC.
117 North Madriver Street
BELLEFONTAINE, OHIO 43311
(937) 593-7335

ORIGINAL STAMP IN GREEN
KSS D0308 2276038 L-2276-3

2 WORKING DAYS
BEFORE YOU DIG
CALL TOLL FREE **800-362-2764**
OHIO UTILITIES PROTECTION SERVICE.

INDEXED ON MAP
3303 IP

REC'D 4-13-95 JML OK ✓



Lee Surveying and Mapping Co.



Farm Surveys • Lot Surveys • Topography • Subdivisions • Construction Layout

143 EAST COLUMBUS AVENUE
BELLEFONTAINE, OHIO 43311

(513) 593-7335

JEFFREY I. LEE, P.S.

JOSEPH A. REA 2.000 ACRES

LYING IN VIRGINIA MILITARY SURVEY 4995, PERRY TOWNSHIP, LOGAN COUNTY, OHIO.

BEING ALL OF THE JOSEPH A. REA 0.61 ACRE TRACT (0.613 ACRES BY THIS SURVEY) AND PART OF THE 5.13 ACRE TRACT AS DEEDED AND DESCRIBED IN OFFICIAL RECORD 237, PAGE 335, TRACTS I AND II, OF THE LOGAN COUNTY RECORDS OF DEEDS AND BEING MORE PARTICULARLY DESCRIBED AS FOLLOWS:

BEGINNING FOR REFERENCE AT A P.K. NAIL FOUND AT THE INTERSECTION OF CENTER- LINES OF COUNTY HIGHWAY 142 AND COUNTY HIGHWAY 2.

THENCE, WITH THE CENTER-LINE OF COUNTY HIGHWAY 2, N 77°-02'-13" W, A DISTANCE OF 1118.91 FEET TO A 5/8 INCH IRON ROD FOUND.

THENCE, WITH THE CENTER-LINE OF COUNTY HIGHWAY 2 (50 FEET WIDE), N 79°-56'-00" W, A DISTANCE OF 89.83 FEET TO A RAILROAD SPIKE SET AT THE **TRUE POINT OF BEGINNING**, PASSING A 1/2 INCH IRON ROD FOUND AT THE SOUTHEAST CORNER OF THE SAID 5.13 ACRE TRACT AT A DISTANCE OF 29.66 FEET. THE SAID 1/2 INCH IRON ROD IS ALSO THE SOUTHWEST CORNER OF THE HAROLD HAGAR 40.0 ACRE TRACT (VOL. 178, PG. 29).

THENCE, CONTINUING WITH THE CENTER-LINE, N 79°-56'-00" W, A DISTANCE OF 378.87 FEET TO A RAILROAD SPIKE SET AT THE SOUTHWEST CORNER OF THE SAID 0.61 ACRE TRACT, PASSING A 1/2 INCH IRON ROD FOUND AT 259.87 FEET. THE SAID RAILROAD SPIKE IS ALSO THE SOUTHEAST CORNER OF THE JOHN Y. SEILING, TRUSTEE, 47.34 ACRE TRACT (O.R. 47, PG. 754).

THENCE, WITH THE LINES OF THE SAID 47.34 ACRE TRACT THE FOLLOWING THREE COURSES:

N 09°-53'-10" E, A DISTANCE OF 196.20 FEET TO A 5/8 INCH IRON ROD SET AT THE NORTHWEST CORNER OF THE SAID 0.61 ACRE TRACT.

S 73°-15'-29" E, A DISTANCE OF 166.00 FEET TO A 5/8 INCH IRON ROD SET AT THE NORTHEAST CORNER OF THE SAID 0.61 ACRE TRACT AND BEING ON THE WEST LINE OF THE AFORESAID 5.13 ACRE TRACT.

N 24°-25'-00" E, A DISTANCE OF 80.77 FEET TO A 5/8 INCH IRON ROD SET.

THENCE, THROUGH THE SAID 5.13 ACRE TRACT, S 79°-56'-00" E, A DISTANCE OF 213.76 FEET TO A 5/8 INCH IRON ROD SET.

THENCE, S 14°-21'-44" W, PARALLEL AND 60 FEET DISTANT FROM THE EAST LINE OF THE SAID 5.13 ACRE TRACT, A DISTANCE OF 255.88 FEET TO THE POINT OF BEGINNING.

CONTAINING 2.000 ACRES OF WHICH 0.218 ACRE IS WITHIN THE HIGHWAY RIGHT-OF-WAY.

THE BASIS FOR BEARINGS IS THE CENTER-LINE OF COUNTY HIGHWAY 2 BEING N 79°-56'-00" W, AND ALL BEARINGS ARE FROM ANGLES AND DISTANCES MEASURED IN FIELD SURVEY BY LEE SURVEYING AND MAPPING COMPANY ON APRIL 13, 1995.

DESCRIPTION PREPARED BY:

JEFFREY I. LEE
PROFESSIONAL SURVEYOR 6359
APRIL 13, 1995



L-2276

ORIGINAL STAMP IN GREEN

INDEXED ON MAP
3303 2D

REC'D 4-13-95 SWJ OK

REFERENCES

LOGAN COUNTY ENGINEER'S F.B. 579. PP. 73 & 74

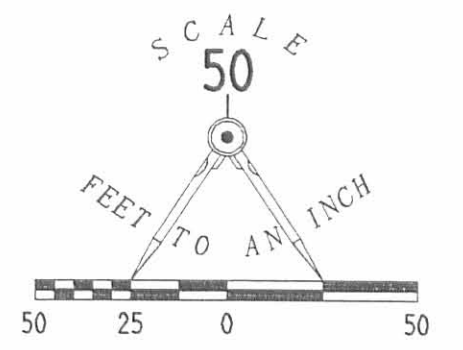
JOHN Y. SEILING, TRUSTEE
47.34 ACRES
O.R. 47. PG. 754

JOSEPH A. REA
5.13 ACRES
O.R. 237. PG. 335. TRACT I

JOSEPH A. REA
0.613 ACRE BY SURVEY
O.R. 237. PG. 335. TRACT II

2.000 ACRES
OF WHICH 0.218 ACRE IS WITHIN
THE HIGHWAY RIGHT-OF-WAY

HAROLD HAGAR
40.0 ACRES
VOL. 178. PG. 29



- LEGEND
- 5/8" IRON ROD SET W/ PLASTIC I.D. CAP STAMPED "LEE PS6359"
 - ⊕ RAILROAD SPIKE SET
 - 5/8" IRON ROD FOUND
 - 1/2" IRON ROD FOUND
 - ⊗ P.K. NAIL FOUND
 - ⊕ 3" DIA. METAL FENCE POST FOUND
 - ⚡ LINE NOT DRAWN TO SCALE

SURVEY OF 2.000 ACRES FOR JOSEPH A. REA
 ALL OF THE 0.61 ACRE TRACT AND PART OF THE 5.13 ACRE TRACT
 OFFICIAL RECORD 237. PAGE 335. TRACTS I AND II
 VIRGINIA MILITARY SURVEY 4995
 PERRY TOWNSHIP
 LOGAN COUNTY, OHIO

INDEXED ON MAP
3303 2P



SURVEYED BY:
 [Signature]
 JEFFREY L. LEE
 PROFESSIONAL SURVEYOR 6359
 APRIL 13, 1995

COPYRIGHT 1995 BY:
LEE SURVEYING & MAPPING CO.
 143 East Columbus Avenue
 BELLEFONTAINE, OHIO 43311
 (513) 593-7335

2 WORKING DAYS
BEFORE YOU DIG
 CALL TOLL FREE **800-362-2764**
 OHIO UTILITIES PROTECTION SERVICE.



REC'D 4-7-99 SUM OK ✓

Lee Surveying and Mapping Co., Inc.



Land Surveys • Topography • Subdivisions • Construction Layout

117 N. Madriver Street
Bellefontaine OH 43311

Phone: (937) 593-7335
Fax: (937) 593-7444

SEILING 2.500 ACRES

Lying in Virginia Military Survey 4995, Perry Township, Logan County, Ohio.

Being out of the John Y Seiling, Trustee original 47.34 acre tract as deeded and described in Official Record 47, Page 754, Tract I, of the Logan County Records of deeds and being more particularly described as follows:

Beginning at a P.K. Nail found at the intersection of center-lines of County highway 142 and County Highway 2, being Station 384 + 87.5 (Logan County Engineer Field Book 579, Page 71-74.)

THENCE, with the center-line of County Highway 2 the following 2 courses:

N 77°-02'-13" W, a distance of 1118.91 feet to a 5/8 inch iron rod found.

N 79°-56'-00" W, a distance of 587.70 feet to a railroad spike found at the TRUE POINT OF BEGINNING.

THENCE, with the center-line of County highway 2 (50 feet wide), N 79°-56'-00" W, a distance of 180.00 feet to a MAG nail set.

THENCE, N 19°-37'-01" E, a distance of 461.69 feet to a 5/8 inch iron rod set, passing a 5/8 inch iron rod set at 25.35 feet.

THENCE, S 69°-54'-26" E, a distance of 329.62 feet to a 5/8 inch iron rod set.

THENCE, with the west lines of the Joseph A. Rea 5.13 acre tract (O.R. 237, Pg. 335, Tract 1), and the Joseph A. Rea 2.00 acre tract (O.R. 276, Pg. 213), S 24°-25'-00" W, a distance of 228.52 feet to a 5/8 inch iron rod found.

THENCE, with the said 2.00 acre tract the following two courses;

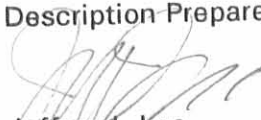
N 73°-15'-29" W, a distance of 166.00 feet to a 5/8 inch iron rod found.

S 9°-53'-10" W, a distance of 196.20 feet to the point of beginning, passing a 5/8 inch iron rod found at 171.20 feet.

Containing 2.500 acres of which 0.102 acre are in the highway right-of-way.

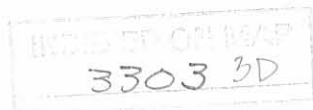
The basis for bearings is the center-line of County highway 2 being N 79°-56'-00" W, and all other bearings are from angles and distances measured in a field survey by Lee Surveying and Mapping Company on April 1, 1999

Description Prepared By:

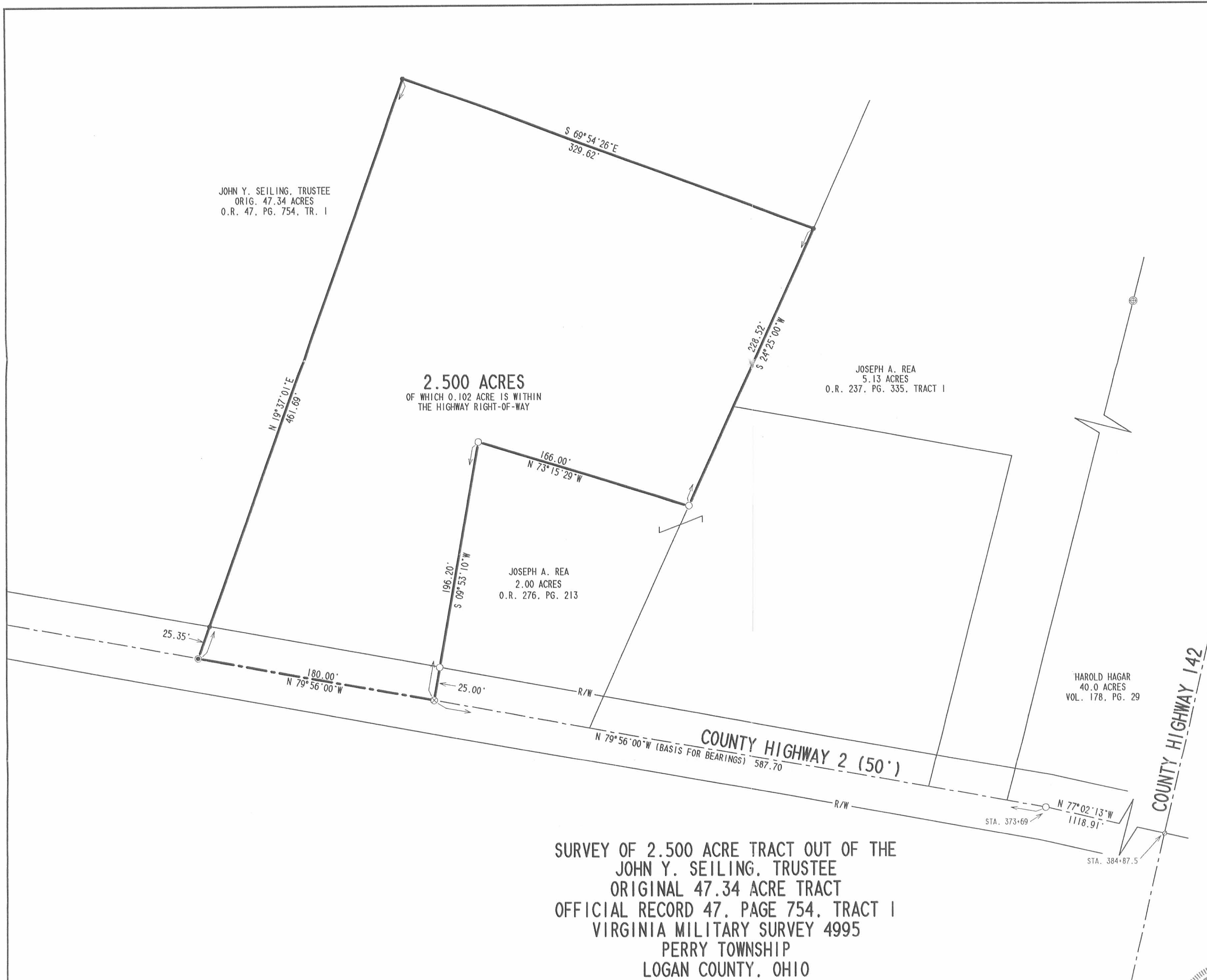

Jeffrey I. Lee
Professional Surveyor 6359
April 2, 1999



L-2276



REC'D 4-7-99 SWJ OK ✓



JOHN Y. SEILING, TRUSTEE
ORIG. 47.34 ACRES
O.R. 47, PG. 754, TR. 1

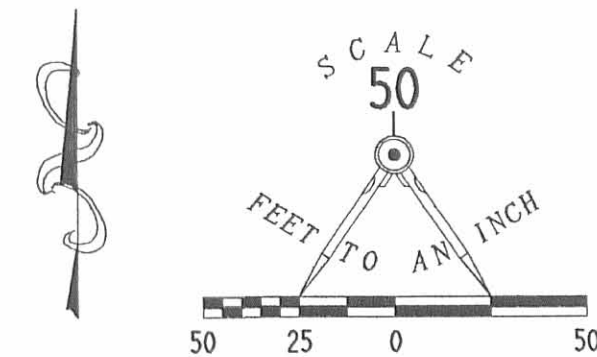
2.500 ACRES
OF WHICH 0.102 ACRE IS WITHIN
THE HIGHWAY RIGHT-OF-WAY

JOSEPH A. REA
5.13 ACRES
O.R. 237, PG. 335, TRACT 1

JOSEPH A. REA
2.00 ACRES
O.R. 276, PG. 213

HAROLD HAGAR
40.0 ACRES
VOL. 178, PG. 29

SURVEY OF 2.500 ACRE TRACT OUT OF THE
JOHN Y. SEILING, TRUSTEE
ORIGINAL 47.34 ACRE TRACT
OFFICIAL RECORD 47, PAGE 754, TRACT 1
VIRGINIA MILITARY SURVEY 4995
PERRY TOWNSHIP
LOGAN COUNTY, OHIO



LEGEND

- 5/8" IRON ROD SET W/ PLASTIC I.D. CAP STAMPED "LEE PS6359"
- ⊙ MAG NAIL SET
- ⊗ RAILROAD SPIKE FOUND
- 5/8" IRON ROD FOUND
- 1/2" IRON ROD FOUND
- ⊗ P.K. NAIL FOUND
- ⊕ 3" DIA. METAL FENCE POST FOUND
- LINE NOT DRAWN TO SCALE

REFERENCES

LOGAN COUNTY ENGINEER'S F.B. 579, PP. 73 & 74

COUNTY HIGHWAY 142

COUNTY HIGHWAY 2 (50')



SURVEYED BY:
Jeffrey I. Lee
 JEFFREY I. LEE
 PROFESSIONAL SURVEYOR 6359
 APRIL 1, 1999
 COPYRIGHT 1999 BY:
 LEE SURVEYING & MAPPING CO., INC.
 117 North Madriver Street
 BELLEFONTAINE, OHIO 43311
 (937) 593-7335

ORIGINAL STAMP IN GREEN D 343 SEILING L-2276-2

2 WORKING DAYS
BEFORE YOU DIG
 CALL TOLL FREE 800-362-2764
 OHIO UTILITIES PROTECTION SERVICE.

INDEXED ON MAP
3303 3P

Bushong Survey Perry Township March 1952 5.13 Acres

71

The following described land in Perry Township, Logan County Ohio and being in V.M.S. 4995

The following described being 5.13 acres off of the East side of the F.D.Bushong present 50.40 acres the 5.13 acres being more fully described as follows beginning at an iron in the center of County Road Number 2 at the S.W. corner of Harold Hager's 40.00 acre tract and said iron being station 373 plus 39 of Road Number 2 as shown in Logan County Engineer's Field Book 579 page 74 thence with the center of Road Number 2 N. 79° - 56' W. 320 feet to an iron thence N. 24° - 25' E. 737 feet to an iron pipe the last described line passing an iron pipe at the North side of the road at 25.80 feet said pipe being 25.00 feet from the center line of the road when measured at right angles thence N. 32° - 00' E. 331 feet to a point at the south edge of Mill creek and being in the south line of Harold Hager's 22.41 acre tract thence with the south side of said 22.41 acres the following two courses and distances (S. 24° - 38' E. 56 feet to an iron pipe and N. 73° - 01' E. 65 feet to a large round steel post in the West line of Harold Hager's 40.00 acre tract the last described line passing from the south side to the North side of Mill Creek thence with the West line of said Hager 40.00 acre tract S. 14° - 21' W. 1007 feet to the place of beginning said tract containing 5.13 acres.

cc
E.K.Core,
Logan County Engineer.

INDEXED ON MAP
3303 4D-1

Bushong Survey Perry Township Feb. 1961 47.34 Acres

Q-Plat Book
2127/21
0-22

The following described land in Perry Township, Logan County Ohio
and being in V.M.S. 4995

7

Beginning at an iron in the center of County Road Number 2 at the
S.E. corner of Lawrence E. Oliver's 74.40 acre tract and said beginning
point being station 354 plus 17 of Road Number 2 survey as shown in
Logan County Engineer's Field Book Number 579 page 74

Thence with the east side of said Oliver's 74.40 acre tract
N. 35 - 40 E. 1528.00 feet to an iron, at the S.W. corner of Harold
Hager's 22.41 acre tract.

Thence with the south side of said Harold Hager's 22.41 acre tract the
following three courses and distances : S. 52 - 07 E. 270.00 feet to a
stake, S. 66 - 00 E. 708.00 feet to a large wood post and S. 24 - 38 E.
444.20 feet to a point at the south side of Mill Creek and being at the
N.W. corner of Harold Ray's 5.13 acre tract.

Thence with the west side of said Harold Ray's 5.13 acre tract the following
two courses and distances : S. 32 - 00 W. 331.00 feet to an iron and
S. 24 - 25 W. 554.40 feet to an iron at the N.E. corner of Harold Ray's
0.61 acre tract.

Thence with the north side of said 0.61 acre tract N. 73 - 18 W. 166.00
feet to an iron.

Thence S. 10 - 04 W. 196.20 feet to an iron in the center of said Road
Number 2. The last described line passing an iron 25.00 feet north of the
Road center line.

Thence with the center line of said Road Number 2 N. 79 - 56 W. 772.50
feet to an iron.

Thence again with the center line of said Road Number 2 N. 54 - 36 W.
710.50 feet to the place of beginning.

The above described tract containing 47.34 acres.

cc
Logan County Engineer

INDEXED ON MAP

3303

4D-2

Bushong Survey Perry Township Feb. 1961 0.61 Acre

The following described land in Perry Township, Logan County, Ohio and being in V.M.S. 4995

Beginning at an iron in the center of County Road Number 2 at the S.W. corner of Harold Ray's 5.13 acre tract and said beginning point being station 370 plus 19 as shown in Logan County Engineer's field Book Number 579 page 64.

Thence with the center line of said Road Number 2 N. 79 - 56 W. 119.00 feet to an iron.

Thence N. 10 - 04 E. 196.20 feet to an iron. The last described line passing an iron at the North side of the road at 25.00 feet.

Thence S. 73 - 18 E. 166.00 feet to an iron in the west side of said Harold Ray's 5.13 acre tract.

Thence with the west side of said Harold Ray's 5.13 acre tract S. 24 - 25 W. 182.60 feet to the place of beginning. The last described line passing an iron at the North side of the road at 156.80 feet (Being 25.00 feet from the center line when measured at right angles.)

The above described tract containing 0.61 of one acre and being out of the S.E. corner of Fay D. Bushong's present 45.27 acre tract.

cc
Logan County Engineer

INDEXED ON MAP

3303

4D-3

11-7-14

Lee Surveying and Mapping Co., Inc.



Land Surveys • Topography • Subdivisions • Construction Layout

117 N. Madriver St.
Bellefontaine OH 43311



Phone: (937) 593-7335
Fax: (937) 593-7444
surveys@lsmine.us

SEILING, TRUSTEE 43.193 ACRES

Lying in Virginia Military Survey 4995, Perry Township, Logan County, Ohio.

Being all of the remainder of the John Y. Seiling, Trustee, original 47.34 acre tract as deeded and described in Official Record 47, Page 754, Tract 1 of the Logan County Records of Deeds and being more particularly described as follows:

Beginning on a 5/8 inch iron rod found on the south line of Virginia Military Survey 4995 on the center-line of County Highway 2 on Station 361 + 27.5 (Logan County Engineer's Field Book 579, Pg. 73).

THENCE, with the south line of Virginia Military Survey 4995 and the center-line of County Highway 2 (50 feet wide), N 54°-36'-07"W, a distance of 709.77 feet to a 5/8 inch iron rod found, passing a MAG nail set at 269.94 feet.

THENCE, with the east line of the Ryan Farms LLC 77.20 acre tract (O.R. 1146, Pg. 937), N 35°-44'-39"E, a distance of 1536.61 feet to a 5/8 inch iron rod found.

THENCE, with the south lines of the Four Henry LLC 87.725 acre tract (O.R. 1141, Pg. 884), the following three courses:

S 50°-51'-57"E, a distance of 268.49 feet to a 5/8 inch iron rod found.

S 65°-30'-47"E, a distance of 709.09 feet to a 5/8 inch iron rod found.

S 24°-48'-17"E, a distance of 439.88 feet to a point in the creek, referenced by a 5/8 inch iron rod set bearing N 89°-34'-32"W, a distance of 24.81 feet.

THENCE, with the west lines of the Joseph A. Rea 5.13 acre tract (O.R. 237, Pg. 335), the following two courses:

S 31°-45'-11"W, a distance of 330.38 feet to a point in the creek, referenced by a 5/8 inch iron rod set bearing S 88°-33'-57"W, a distance of 8.98 feet.

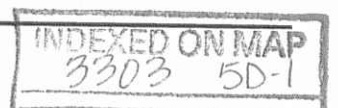
S 24°-28'-06"W, a distance of 326.27 feet to a 5/8 inch iron rod found.

THENCE, with the north line of the Bobee Cheryl Hutchison 2.500 acre tract (O.R. 654, Pg. 920), N 69°-54'-26"W, a distance of 329.62 feet to a 5/8 inch iron rod found.

THENCE, with the lines of the William J. Eleyet 1.610 acre tract (O.R. 926, Pg. 13), the following two courses:

N 79°-56'-00"W, a distance of 154.00 feet to a 5/8 inch iron rod found.

S 19°-37'-01"W, a distance of 461.69 feet to a MAG nail found on the south line of Virginia Military Survey 4995 and the center-line of County Highway 2, passing a 5/8 inch iron rod found at 436.34 feet.



Lee Surveying and Mapping Co., Inc.

Land Surveys • Topography • Subdivisions • Construction Layout

117 N. Madriver St.
Bellefontaine OH 43311



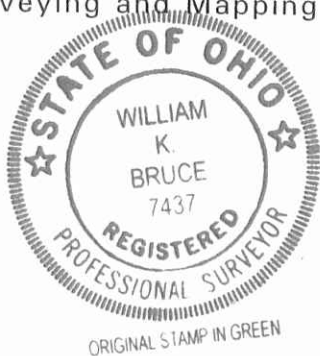
Phone: (937) 593-7335
Fax: (937) 593-7444
surveys@lsminc.us

THENCE, with the south line of Virginia Military Survey 4995 and the center-line of County Highway 2, N 79°-53'-42"W, a distance of 438.80 feet to the point of beginning.

Containing 43.193 acres, of which 0.658 acre is within the highway right-of-way.

Property is subject to any and all previous easements and rights-of-way of record.

The basis for bearings is the center-line of County Highway 2 between Station 361 + 27.5 and Station 353 + 62.5, being N 54°-36'-07"W, and all other bearings are from angles and distances measured in a field survey by Lee Surveying and Mapping Co., Inc. on November 4, 2014.

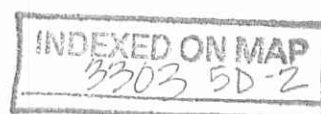


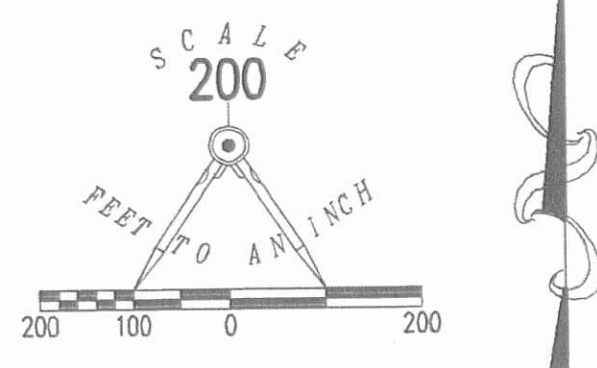
Description prepared by:

A handwritten signature in black ink, appearing to read 'William K. Bruce'.

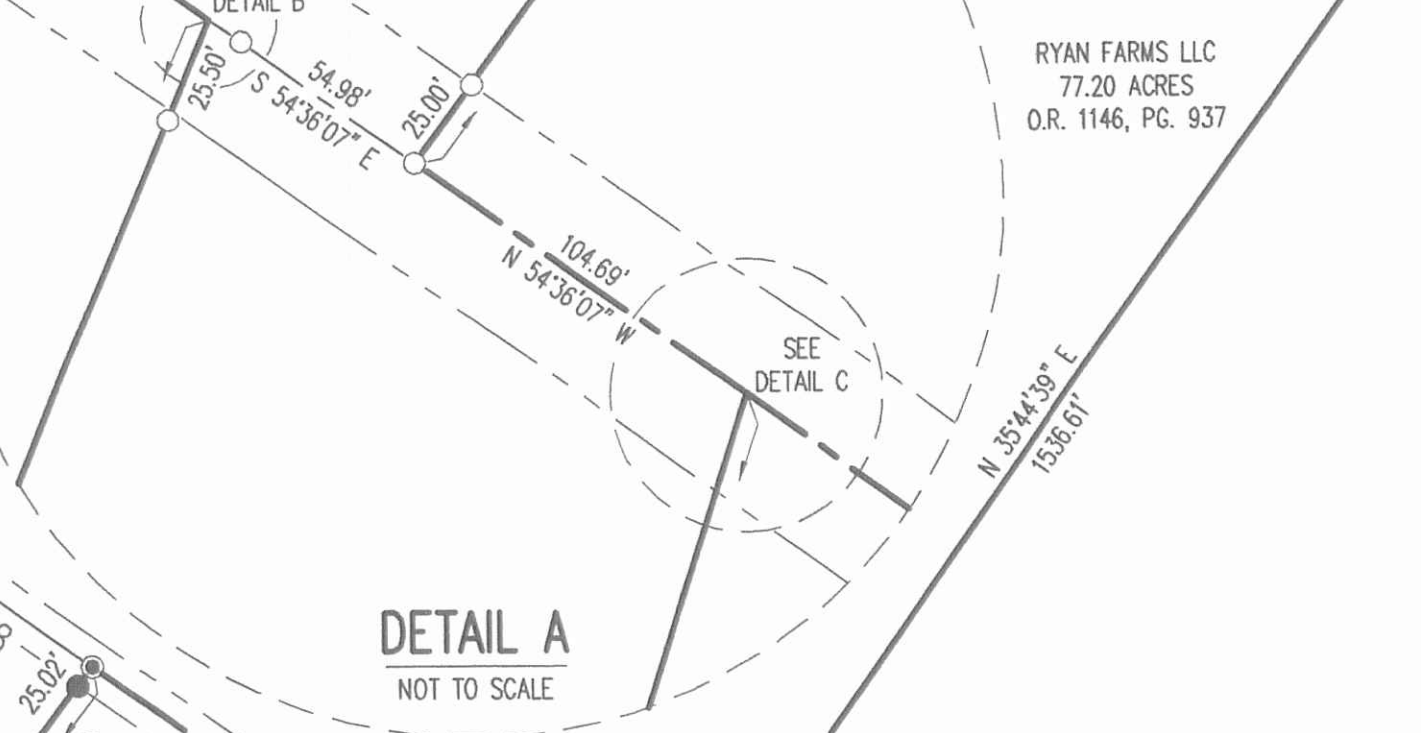
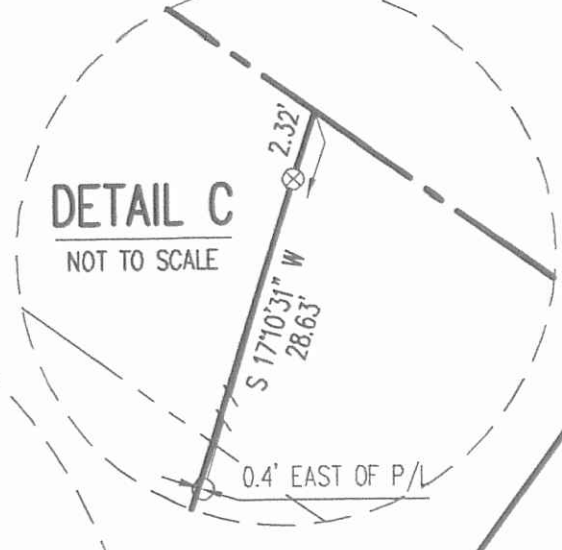
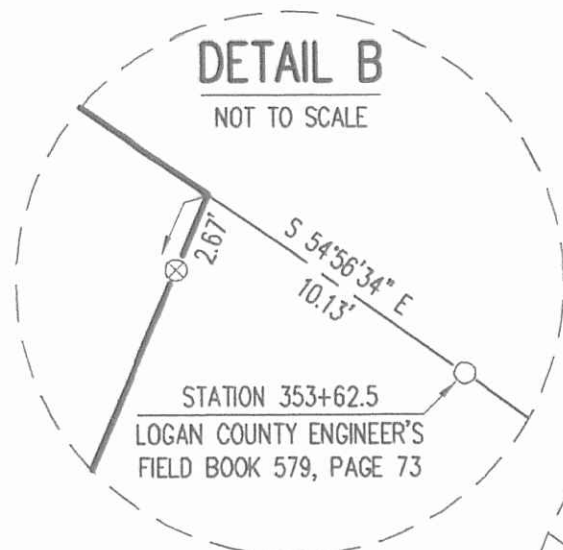
William K. Bruce
Professional Surveyor 7437
November 5, 2014

57950814





LINE	BEARING	DISTANCE
L1	N 89°34'32" W	24.81'
L2	S 88°33'57" W	8.98'



V.M.S. 12103-13528-13557-13558
 V.M.S. 4995
 DOROTHY A. NEILL, TRUSTEE
 17.4 ACRES
 O.R. 418, PG. 762
 (THIRD DESCRIPTION)

RYAN FARMS LLC
 77.20 ACRES
 O.R. 1146, PG. 937

FOUR HENRY LLC
 87.725 ACRES
 O.R. 1141, PG. 884

43.193 ACRES
 OF WHICH 0.658 ACRE IS WITHIN
 THE HIGHWAY RIGHT-OF-WAY

JOHN Y. SEILING, TRUSTEE
 ORIGINAL 47.34 ACRES
 O.R. 47, PG. 754
 TRACT 1

DOROTHY A. NEILL, TRUSTEE
 28.60 ACRES
 O.R. 418, PG. 762
 (SECOND DESCRIPTION)

57.277 ACRES
 OF WHICH 0.539 ACRE IS WITHIN
 THE HIGHWAY RIGHT-OF-WAY

JOHN Y. SEILING, TRUSTEE
 58.39 ACRES
 O.R. 47, PG. 754
 TRACT 2

REGINA J. BRILL AND
 GARY L. BRILL, TRUSTEES
 100 ACRES
 O.R. 1074, PG. 737

STATION 361+27.5
 LOGAN COUNTY ENGINEER'S
 FIELD BOOK 579, PAGE 73

WILLIAM J. ELETET
 1.610 ACRES
 O.R. 926, PG. 13

BOBEE CHERYL HUTCHISON
 2.500 ACRES
 O.R. 654, PG. 920

JOSEPH A. REA
 5.13 ACRES
 O.R. 237, PG. 335

MICHAEL P. LYONS
 3.00 ACRES
 O.R. 111, PG. 40

RETRACEMENT SURVEY OF THE
 JOHN Y. SEILING, TRUSTEE
 ORIGINAL 47.34 ACRE TRACT
 AND 58.39 ACRE TRACT
 OFFICIAL RECORD 47, PAGE 754
 TRACT 1 AND TRACT 2
 VIRGINIA MILITARY SURVEYS 4995 &
 12103-13528-13557-13558
 PERRY TOWNSHIP
 LOGAN COUNTY, OHIO

SURVEYED BY:

 WILLIAM K. BRUCE
 PROFESSIONAL SURVEYOR 7437
 NOVEMBER 4, 2014



COPYRIGHT 2014 BY:
 LEE SURVEYING & MAPPING CO.
 117 North Madriver Street, INC.
 BELLEFONTAINE, OHIO 43311
 (937) 593-7335
 WWW.LSMINC.US
 surveys@lsminc.us
 KSS D0814 57950814 L-5795-2

INDEXED ON MAP
 3303 5P

- LEGEND:
- ⊗ RAILROAD SPIKE FOUND
 - ⊙ MAG NAIL FOUND
 - ⊙ MAG NAIL SET
 - ⊗ 6 INCH WOOD POST FOUND
 - 5/8 INCH IRON ROD FOUND
 - 5/8 INCH IRON ROD SET WITH PLASTIC I.D. CAP STAMPED "LSM 7437"

DOROTHY A. NEILL, TRUSTEE
 51.61 ACRES
 O.R. 418, PG. 762
 (FIRST DESCRIPTION)

2 WORKING DAYS
BEFORE YOU DIG
 CALL TOLL FREE **800-362-2764**
 OHIO UTILITIES PROTECTION SERVICE