

SURVEY OF PERRY TWP. RD. 141

NOTE: RIGHT OF WAY WIDTH HAS NOT BEEN DECIDED BY PERRY TWP. TRUSTEES AT THIS DATE (12/4/70)

A = R.R. SPK. FO. STA. 35+00

B = " " " " 39+00

FROM POINT "B" WEST TO S.R. 292

SEE PAGE 48-49 BOOK 667

C = 1"  $\phi$  BAR SET. USED POINTS

A & B FOR LINE EAST & WEST AND

OLD FENCE PROJECTED FOR LINE NORTH & SOUTH. STA. 40+14.80

D = 1"  $\phi$  BAR SET STA. 46+89.00

USED OLD FENCE PROJECTED FOR NORTH & SOUTH LINE AND POINTS

E & F. FOR EAST-WEST LINE.

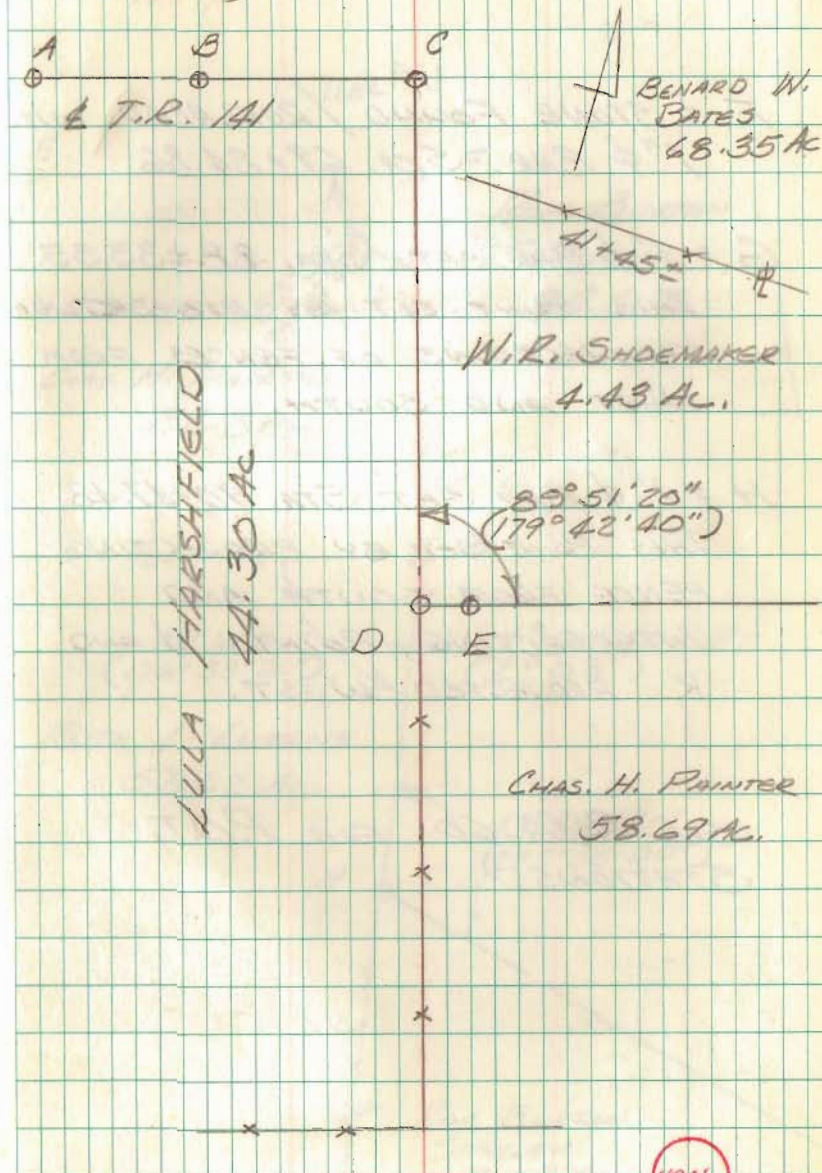
E = 3/4" PIPE FOUND STA. 46+91.43

RAILROAD SPIKES SET ON STATIONS 43, 50, 55, 60, 65, 71, 75, 80, 85, 91, 95, 100, 105, 107+23.7, 110, AND 115.

OCT 5, 1970

L. GEESLIN  
C. NICHOLS  
C. RICKETTS

60





PERRY TWP. RD. 141

F = STONE FOUND / REPLACED WITH  
1"  $\phi$  BAR. STA. 69+84.86

G = 1"  $\phi$  BAR SET STA. 88+33.35  
THIS POINT SET BY INTERSECTING  
PROJECTIONS OF FENCES FROM  
WEST AND SOUTH.

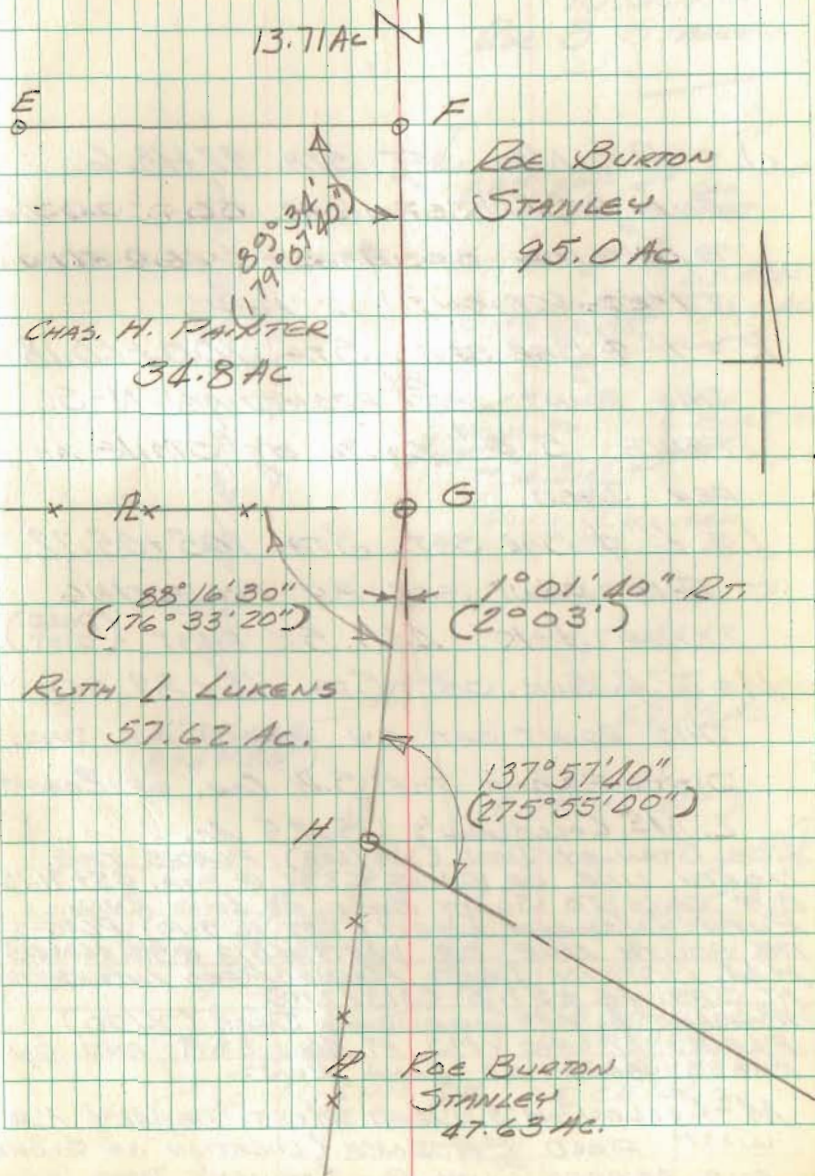
H = 1"  $\phi$  BAR SET. STA. 90+47.48  
THIS POINT SET BY PROJECTING  
FENCE FROM SOUTH AND  
INTERSECTING POINTS J AND  
K PROJECTED WEST.

SEE PAGE 60 FOR P.O.T.  
STATIONS.

OCT 6, 1970

L. GEESLIN  
C. NICHOLS  
C. RICKETTS

61





PERRY TWP RD 141

SEE PAGE 61

J = P.K. NAIL SET STA. 92+13.6

LINE H, J, K, AND L MADE PARALLEL  
TO N. LINE OF ABBOT'S 10.0 ACRE  
TRACT.

K = 1"  $\phi$  BAR SET, STA. 100+60.18

THIS POINT SET BY PROJECTING N-S.  
FENCE 5.0' SOUTH OF STONE AS  
PER DEED.

L = 1"  $\phi$  BAR SET, STA. 105+05.72

THIS POINT SET BY PROJECTING  
LINE J-K 445.5' EAST, (DEED  
DIST.)

M = R.R. SPK. SET, STA. 115+89.60

THIS POINT SET BY MEASURING DEED  
DIST. FROM THE S.W. COR. OF ROBERT  
L. Mc COLLOUGH'S 25.25 AC.

ROE STANLEY DEED (313/208) PLACES THE  
NORTH LINE OF V.M.S. 6232 @ STA. 45+71.75  
BUT CALLS TO SOUTH BANK OF LONG RUN.  
RUTH INSKEEP DEED (257 P. 9-10) PLACES  
THE SOUTH LINE OF VMS 4813 @ STA. 46+64.5.  
H.M. BOTKIN DEED PLACES ROAD INTERSECTION  
AT STA. 46+57.3 (313/210)

ROBERT L. Mc COLLOUGH'S DEED (X/70)  
PLACES N. LINE VMS AT 46+38.9 AND ON  
THE S. BANK OF LONG RUN.

Mc COLLOUGH'S DEED MOST NEARLY AGREES  
WITH FIELD EVIDENCE (LOCATION OF S. BANK)  
AND AGREES WITH ROE STANLEY'S DEED (S. BANK)

OCT 7, 1970

GEESEIN  
NICHOLS  
RICKETTS

62

