

REC'D 1-8-03 SML OK

# Lee Surveying and Mapping Co., Inc.

Land Surveys • Topography • Subdivisions • Construction Layout

117 N. Madriver St.  
Bellefontaine OH 43311



Phone: (937) 593-7335  
Fax: (937) 593-7444

## FIFTH THIRD BANK, TRUSTEE 5.001 ACRES TRACT A

Lying in Virginia Military Survey 3164, Perry Township, Logan County, Ohio.

Being out of the Fifth Third Bank, Trustee 21.517 acre tract as deeded and described in Volume 344, Page 793 of the Logan County Records of Deeds and being more particularly described as follows:

Beginning at a MAG nail set at the intersection of the center-line of County Highway 296 (width varies) and the west line of Virginia Military Survey 3164 on County Highway 296 center-line station 537+32.

THENCE, with the west line of Virginia Military Survey 3164 and the east line of the David R. Wood original 261.96 acre tract (O.R. 219, Pg. 927), N 56°-51'-01" E, a distance of 484.25 feet to a 5/8 inch iron rod set, passing a 5/8 inch iron rod set at 108.10 feet.

THENCE, with the south line of the David R. Wood original 5.0 acre tract (O.R. 221, Pg. 578), N 75°-14'-36" E, a distance of 458.31 feet to a 5/8 inch iron rod set.

THENCE, S 11°-55'-53" W, a distance of 486.63 feet to a MAG nail set, passing a 5/8 inch iron rod set at 416.42 feet.

THENCE, with the center-line of County Highway 296 (width varies), N 82°-47'-38" W, a distance of 753.98 feet to the point of beginning.

Containing 5.001 acres, of which 1.150 acres are within the highway right-of-way.

The basis for bearings is the center-line of County Highway 296 at the point of beginning, being N 82°-47'-38" W, and all other bearings are from angles and distances measured in a field survey by Lee Surveying and Mapping Co., inc. on December 12, 2002.

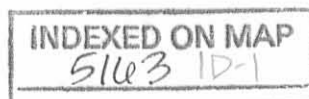
Description prepared by:



ORIGINAL STAMP IN GREEN

Jeffrey I. Lee  
Professional Surveyor 6359  
December 16, 2002

L-3467

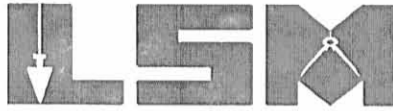


REC'D 1-8-03 SML/AL

# Lee Surveying and Mapping Co., Inc.

Land Surveys • Topography • Subdivisions • Construction Layout

117 N. Madriver St.  
Bellefontaine OH 43311



Phone: (937) 593-7335  
Fax: (937) 593-7444

## FIFTH THIRD BANK, TRUSTEE 5.004 ACRES TRACT B

Lying in Virginia Military Survey 3164, Perry Township, Logan County, Ohio.

Being out of the Fifth Third Bank, Trustee 21.517 acre tract as deeded and described in Volume 344, Page 793 of the Logan County Records of Deeds and being more particularly described as follows:

Beginning at a MAG nail set at the intersection of the center-line of County Highway 296 (width varies) and the west line of Virginia Military Survey 3164 on County Highway 296 center-line station 537+32.

THENCE, with the center-line of County Highway 296 (width varies), S 82°-47'-38" E, a distance of 753.98 feet to a MAG nail set at the TRUE POINT OF BEGINNING.

THENCE, N 11°-55'-53" E, a distance of 486.63 feet to a 5/8 inch iron rod set, passing a 5/8 inch iron rod set at 70.21 feet.

THENCE, with the south line of the David R. Wood original 5.0 acre tract (O.R. 221, Pg. 578), N 75°-14'-36" E, a distance of 430.01 feet to a 5/8 inch iron rod set.

THENCE, S 11°-55'-53" W, a distance of 648.00 feet to a MAG nail set, passing a 5/8 inch iron rod set at 577.79 feet.

THENCE, with the center-line of County Highway 296 (width varies), N 82°-47'-38" W, a distance of 385.51 feet to the point of beginning.

Containing 5.004 acres, of which 0.620 acre is within the highway right-of-way.

The basis for bearings is the center-line of County Highway 296 at the point of beginning, being N 82°-47'-38" W, and all other bearings are from angles and distances measured in a field survey by Lee Surveying and Mapping Co., Inc. on December 12, 2002.

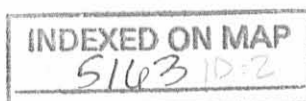
Description prepared by:



ORIGINAL STAMP IN GREEN

A handwritten signature in black ink, appearing to read 'Jeffrey I. Lee'.  
Jeffrey I. Lee  
Professional Surveyor 6359  
December 16, 2002

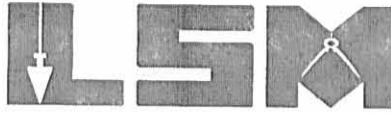
L-3467



REC'D 1-8-03 SMW  
**Lee Surveying and Mapping Co., Inc.**

Land Surveys • Topography • Subdivisions • Construction Layout

117 N. Madriver St.  
Bellefontaine OH 43311



Phone: (937) 593-7335  
Fax: (937) 593-7444

**FIFTH THIRD BANK, TRUSTEE  
6.427 ACRES  
TRACT C**

Lying in Virginia Military Survey 3164, Perry Township, Logan County, Ohio.

Being out of the Fifth Third Bank, Trustee 21.517 acre tract as deeded and described in Volume 344, Page 793 and the 31.67 acre tract as deeded and described in Volume 344, Page 401, Tract One of the Logan County Records of Deeds and being more particularly described as follows:

Beginning at a MAG nail set at the intersection of the center-line of County Highway 296 (width varies) and the west line of Virginia Military Survey 3164 on County Highway 296 center-line station 537+32.

THENCE, with the center-line of County Highway 296 (width varies), S 82°-47'-38" E, a distance of 1139.49 feet to a MAG nail set at the TRUE POINT OF BEGINNING.

THENCE, N 11°-55'-53" E, a distance of 648.00 feet to a 5/8 inch iron rod set, passing a 5/8 inch iron rod set at 70.21 feet.

THENCE, with the south line of the David R. Wood original 5.0 acre tract (O.R. 221, Pg. 578) and the State of Ohio 2.308 acre tract (Vol. 317, Pg. 548), N 75°-14'-36" E, a distance of 369.86 feet to a 5/8 inch iron rod set.

THENCE, with the south line of the said 2.308 acre tract, a curve to the right having a central angle of 0°-53'-15", a radius of 3869.09 feet, an arc length of 59.92 feet and a chord bearing N 75°-41'-14" E, a distance of 59.92 feet to a 5/8 inch iron rod set.

THENCE, S 11°-55'-53" W, a distance of 808.86 feet to a MAG nail set, passing a 5/8 inch iron rod set at 738.65 feet.

THENCE, with the center-line of County Highway 296 (width varies), N 82°-47'-38" W, a distance of 385.51 feet to the point of beginning.

Containing 6.427 acres, of which 0.620 acre is within the highway right-of-way.

The basis for bearings is the center-line of County Highway 296 at the point of beginning, being N 82°-47'-38" W, and all other bearings are from angles and distances measured in a field survey by Lee Surveying and Mapping Co., Inc. on December 12, 2002.

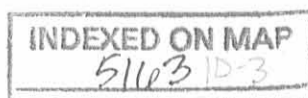


ORIGINAL STAMP IN GREEN

Description prepared by:

A handwritten signature in black ink, appearing to read 'Jeffrey I. Lee'.  
Jeffrey I. Lee  
Professional Surveyor 6359  
December 16, 2002

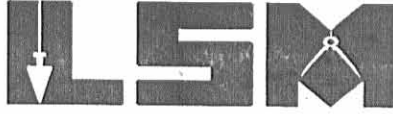
L-3467



REC'D 1-8-03 smj/ok  
**Lee Surveying and Mapping Co., Inc.**

Land Surveys • Topography • Subdivisions • Construction Layout

117 N. Madriver St.  
Bellefontaine OH 43311



Phone: (937) 593-7335  
Fax: (937) 593-7444

**FIFTH THIRD BANK, TRUSTEE  
7.823 ACRES  
TRACT D**

Lying in Virginia Military Survey 3164, Perry Township, Logan County, Ohio.

Being out of the Fifth Third Bank, Trustee 21.517 acre tract as deeded and described in Volume 344, Page 793 and the 31.67 acre tract as deeded and described in Volume 344, Page 401, Tract One of the Logan County Records of Deeds and being more particularly described as follows:

Beginning at a MAG nail set at the intersection of the center-line of County Highway 296 (width varies) and the west line of Virginia Military Survey 3164 on County Highway 296 center-line station 537+32.

THENCE, with the center-line of County Highway 296 (width varies), S 82°-47'-38" E, a distance of 1525.00 feet to a MAG nail set at the TRUE POINT OF BEGINNING.

THENCE, N 11°-55'-53" E, a distance of 808.86 feet to a 5/8 inch iron rod set, passing a 5/8 inch iron rod set at 70.21 feet.

THENCE, with the south lines of the State of Ohio 2.308 acre tract (Vol. 317, Pg. 548) and the Donna S. Pleasant original 1-1/2 acre tract (O.R. 37, Pg. 650, Parcel I, Tract II), a curve to the right having a central angle of 6°-10'-15", a radius of 3869.09 feet, an arc length of 416.71 feet and a chord bearing N 79°-12'-59" E, a distance of 416.51 feet to a 5/8 inch iron rod set.

THENCE, S 11°-55'-53" W, a distance of 693.48 to a 5/8 inch iron rod set.

THENCE, S 4°-53'-16" W, a distance of 243.82 feet to a MAG nail set, passing a 5/8 inch iron rod set at 172.33 feet.

THENCE, with the center-line of County Highway 296 (width varies), N 82°-47'-38" W, a distance of 415.51 feet to the point of beginning.

Containing 7.823 acres, of which 0.665 acre is within the highway right-of-way.

The basis for bearings is the center-line of County Highway 296 at the point of beginning, being N 82°-47'-38" W, and all other bearings are from angles and distances measured in a field survey by Lee Surveying and Mapping Co., Inc. on December 12, 2002.

Description prepared by:

A handwritten signature in black ink, appearing to read 'Jeffrey I. Lee', is written over the printed name and partially over the professional seal.

Jeffrey I. Lee  
Professional Surveyor 6359  
December 16, 2002  
Revised January 7, 2003



ORIGINAL STAMP IN GREEN

L-3467



REVISED 1-8-03 BY JAL

# Lee Surveying and Mapping Co., Inc.

Land Surveys • Topography • Subdivisions • Construction Layout

117 N. Madriver St.  
Bellefontaine OH 43311



Phone: (937) 593-7335  
Fax: (937) 593-7444

## FIFTH THIRD BANK, TRUSTEE 8.612 ACRES TRACT E

Lying in Virginia Military Survey 3164, Perry Township, Logan County, Ohio.

Being out of the Fifth Third Bank, Trustee 21.517 acre tract as deeded and described in Volume 344, Page 793 and the 31.67 acre tract as deeded and described in Volume 344, Page 401, Tract One of the Logan County Records of Deeds and being more particularly described as follows:

Beginning at a MAG nail set at the intersection of the center-line of County Highway 296 (width varies) and the west line of Virginia Military Survey 3164 on County Highway 296 center-line station 537+32.

THENCE, with the center-line of County Highway 296 (width varies), S 82°-47'-38" E, a distance of 1940.51 feet to a MAG nail set at the TRUE POINT OF BEGINNING.

THENCE, N 4°-53'-16" E, a distance of 243.82 feet to a 5/8 inch iron rod set, passing a 5/8 inch iron rod set at 71.49 feet.

THENCE, N 11°-55'-53" E, a distance of 693.48 feet to a 5/8 inch iron rod set.

THENCE, with the south line the Donna S. Pleasant original 1-1/2 acre tract (O.R. 37, Pg. 650, Parcel I, Tract II), a curve to the right having a central angle of 3°-36'-24", a radius of 3869.09 feet, an arc length of 243.56 feet and a chord bearing N 84°-06'-18" E, a distance of 243.52 feet to a 5/8 inch iron rod set.

THENCE, with the south line of the said 1-1/2 acre tract, N 85°-54'-31" E, a distance of 158.91 feet to a 5/8 inch iron rod set.

THENCE, S 11°-55'-53" W, a distance of 1029.88 feet to a MAG nail set, passing a 5/8 inch iron rod set at 966.79 feet.

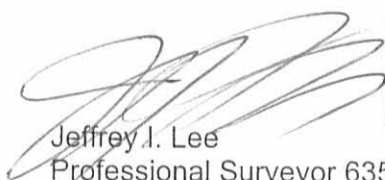
THENCE, with the center-line of County Highway 296, a curve to the left having a central angle of 2°-06'-43", a radius of 7813.06 feet, an arc length of 288.01 feet and a chord bearing N 81°-44'-16" W, a distance of 287.99 feet to a MAG nail set on center-line P.C. station 557+40.04.

THENCE, with the center-line of County Highway 296, N 82°-47'-38" W, a distance of 67.49 feet to the point of beginning.

Containing 8.612 acres, of which 0.570 acre is within the highway right-of-way.

The basis for bearings is the center-line of County Highway 296 at the point of beginning, being N 82°-47'-38" W, and all other bearings are from angles and distances measured in a field survey by Lee Surveying and Mapping Co., Inc. on December 12, 2002.

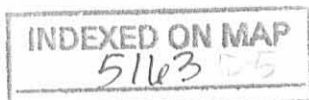
Description prepared by:

  
Jeffrey J. Lee  
Professional Surveyor 6359  
December 16, 2002  
Revised January 7, 2003



ORIGINAL STAMP IN GREEN

L-3467

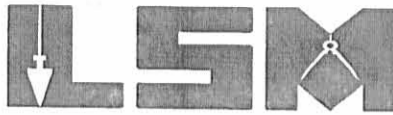




REC'D 1-8-03 S.M. OK  
**Lee Surveying and Mapping Co., Inc.**

Land Surveys • Topography • Subdivisions • Construction Layout

117 N. Madriver St.  
Bellefontaine OH 43311



Phone: (937) 593-7335  
Fax: (937) 593-7444

**FIFTH THIRD BANK, TRUSTEE  
9.557 ACRES  
TRACT F**

Lying in Virginia Military Survey 3164, Perry Township, Logan County, Ohio.

Being out of the Fifth Third Bank, Trustee 31.67 acre tract and 1.73 acre tract as deeded and described in Volume 344, Page 401, Tract One and Tract Three, of the Logan County Records of Deeds and being more particularly described as follows:

Beginning at a MAG nail set at the intersection of the center-line of County Highway 296 (width varies) and the west line of Virginia Military Survey 3164 on County Highway 296 center-line station 537+32.

THENCE, with the center-line of County Highway 296 (width varies), S 82°-47'-38" E, a distance of 2008.00 feet to a MAG nail set on center-line P.C. station 557+40.04.

THENCE, with the center-line of County Highway 296, a curve to the right having a central angle of 2°-06'-43", a radius of 7813.06 feet, an arc length of 288.01 feet and a chord bearing S 81°-44'-16" E, a distance of 287.99 feet to a MAG nail set on at the TRUE POINT OF BEGINNING.

THENCE, N 11°-55'-53" E, a distance of 1029.88 feet to a 5/8 inch iron rod set, passing a 5/8 inch iron rod set at 63.09 feet.

THENCE, with the south lines of the Donna S. Pleasant 1-1/2 acre tract (O.R. 37, Pg. 650, Parcel I, Tract II), the W. Douglas Mercer original 0.930 acre tract (O.R. 130, Pg. 976, Tract II), and the C & F Fabrications Inc. 2.248 acre tract (O.R. 130, Pg. 974), N 85°-54'-31" E, a distance of 401.18 feet to a 5/8 inch iron rod found.

THENCE, S 11°-55'-53" W, a distance of 1072.55 feet to a 5/8 inch iron rod set.

THENCE, S 12°-08'-42" W, a distance of 60.00 feet to a MAG nail set on center-line PT station 564+00.

THENCE, with the center-line of County Highway 296, a curve to the left having a central angle of 2°-49'-37", a radius of 7813.06 feet, an arc length of 385.49 feet and a chord bearing N 79°-16'-06" W, a distance of 385.45 feet to a the point of beginning.

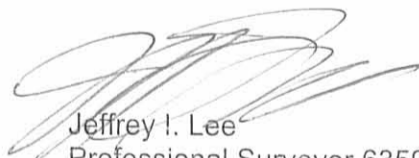
Containing 9.557 acres, of which 0.550 acre is within the highway right-of-way.

The basis for bearings is the center-line of County Highway 296 at the point of beginning, being N 82°-47'-38" W, and all other bearings are from angles and distances measured in a field survey by Lee Surveying and Mapping Co., Inc. on December 12, 2002.

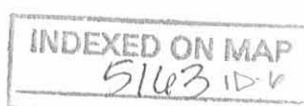
Description prepared by:



ORIGINAL STAMP IN GREEN

  
Jeffrey I. Lee  
Professional Surveyor 6359  
December 16, 2002

L-3467



RECD 1-8-03 SMM/OC

# Lee Surveying and Mapping Co., Inc.

Land Surveys • Topography • Subdivisions • Construction Layout

117 N. Madriver St.  
Bellefontaine OH 43311



Phone: (937) 593-7335  
Fax: (937) 593-7444

## FIFTH THIRD BANK, TRUSTEE 10.251 ACRES TRACT G

Lying in Virginia Military Survey 3164, Perry Township, Logan County, Ohio.

Being out of the Fifth Third Bank, Trustee 31.67 acre tract, 1.12 acre tract and 1.73 acre tract as deeded and described in Volume 344, Page 401, Tract One, Tract Two and Tract Three, of the Logan County Records of Deeds and being more particularly described as follows:

Beginning at a MAG nail set at the intersection of the center-line of County Highway 296 (width varies) and the west line of Virginia Military Survey 3164 on County Highway 296 center-line station 537+32.

THENCE, with the center-line of County Highway 296 (width varies), S 82°-47'-38" E, a distance of 2008.00 feet to a MAG nail set on center-line P.C. station 557+40.04.

THENCE, with the center-line of County Highway 296, a curve to the right having a central angle of 4°-56'-20", a radius of 7813.06 feet, an arc length of 673.50 feet and a chord bearing S 80°-19'-28" E, a distance of 673.29 feet to a MAG nail set on center-line PT station 564+00.

THENCE, N 12°-08'-42" E, a distance of 60.00 feet to a 5/8 inch iron rod set at the TRUE POINT OF BEGINNING.

THENCE, N 11°-55'-53" E, a distance of 1072.55 feet to a 5/8 inch iron rod found.

THENCE, with the west lines of the Robert D. Dill original 5.0 acre tract (Vol. 229, Pg. 289) and the Paul M. Tracey 0.54 acre tract (Vol. 385, Pg. 666), S 31°-39'-51" E, a distance of 1095.72 feet to a 5/8 inch iron rod set on the northerly right-of-way of County Highway 144.

THENCE, with the rights-of-way of County Highway 144 and County Highway 296, the following three (3) courses:

S 65°-51'-51" W, a distance of 162.30 feet to a 5/8 inch iron rod found;

With a curve to the right having a central angle of 29°-26'-25", a radius of 894.93 feet, an arc length of 459.84 feet and a chord bearing S 79°-53'-22" W, a distance of 454.80 feet to a 5/8 inch iron rod found;

N 81°-40'-13" W, a distance of 203.23 feet to the point of beginning.

Containing 10.251 acres.

The basis for bearings is the center-line of County Highway 296 at the point of beginning, being N 82°-47'-38" W, and all other bearings are from angles and distances measured in a field survey by Lee Surveying and Mapping Co., Inc. on December 12, 2002.

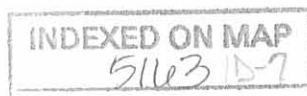
Description prepared by:



ORIGINAL STAMP IN GREEN

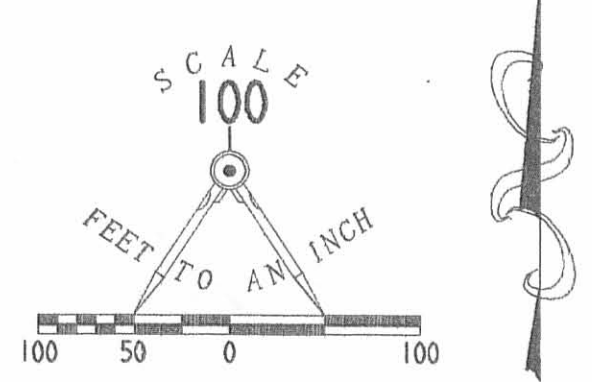
A handwritten signature in black ink, appearing to read 'Jeffrey I. Lee'.  
Jeffrey I. Lee  
Professional Surveyor 6359  
December 16, 2002

L-3467





REV'D 1-8-03 BMJ OK



- LEGEND
- 5/8 INCH IRON ROD SET
  - 5/8 INCH IRON ROD FOUND
  - ⊗ O.D.O.T. 5/8 INCH IRON ROD FOUND
  - ⊠ CONCRETE R/W MONUMENT FOUND
  - ⊙ MAG NAIL SET



CURVE	DELTA ANGLE	RADIUS	ARC	TANGENT	CHORD	CHORD
C 1	0° 53' 15"	3869.09'	59.92'	29.96'	59.92'	N 75° 41' 14" E
C 2	6° 10' 15"	3869.09'	416.71'	208.55'	416.51'	N 79° 12' 59" E
C 3	3° 36' 24"	3869.09'	243.56'	121.82'	243.52'	N 84° 06' 18" E
C 4	2° 06' 43"	7813.06'	288.01'	144.02'	287.99'	N 81° 44' 16" W
C 5	2° 49' 37"	7813.06'	385.49'	192.79'	385.45'	N 79° 16' 00" W
C 6	29° 26' 25"	894.93'	459.84'	235.12'	454.80'	S 79° 53' 22" W
C 7	4° 56' 20"	7813.06'	673.50'	336.96'	673.29'	N 80° 19' 28" W

SURVEY OF SEVEN TRACTS OUT OF THE FIFTH THIRD BANK, TRUSTEE 21.517 ACRE TRACT VOLUME 344, PAGE 793 AND THE 31.67 ACRE TRACT VOLUME 344, PAGE 401, TRACT ONE 1.12 ACRE TRACT AND 1.73 ACRE TRACT VOLUME 344, PAGE 401, TRACT THREE VIRGINIA MILITARY SURVEY 3164 PERRY TOWNSHIP LOGAN COUNTY, OHIO

I HEREBY STATE TO THE TITLE COMPANY, L.T.D. AND FIFTH THIRD BANK THAT I HAVE SURVEYED THE PROPERTY IN THE FOREGOING TITLE CAPTION AND THAT SAID SURVEY IS TRUE AND ACCURATE TO THE BEST OF MY KNOWLEDGE AND BELIEF.

JEFFREY L. LEE  
 PROFESSIONAL SURVEYOR 6359  
 DECEMBER 12, 2002  
 COPYRIGHT 2003 BY  
 LEE SURVEYING & MAPPING CO., INC.  
 117 North Madison Street  
 BELLEVILLE, OHIO 45311  
 (937) 593-7336

ORIGINAL STAMP IN GREEN

2 WORKING DAYS BEFORE YOU DIG  
 CALL TOLL FREE 800-362-2764  
 OHIO UTILITIES PROTECTION SERVICE

INDEXED ON MAP 5/1/23 11

D 407 CTEL2968 L-3467-6



REV'D 4-21-06 SMY OK

# Lee Surveying and Mapping Co., Inc.

Land Surveys • Topography • Subdivisions • Construction Layout

117 N. Madriver St.  
Bellefontaine OH 43311



Phone: (937) 593-7335  
Fax: (937) 593-7444

**1975-2006 - 30 YEARS OF EXCELLENCE**

**PEW  
9.963 ACRES**

Lying in Virginia Military Survey 3164, Perry Township, Logan County, Ohio.

Being all of the Roger A. Pew and Cynthia L. Pew 7.823 acre tract and part of the 8.612 acre tract as deeded and described in Official Record 716, Page 240, Exhibit "A" and Exhibit "B" of the Logan County Records of Deeds and being more particularly described as follows:

Commencing at a MAG nail found at the intersection of the center-line of County Highway 296 and the northwesterly line of Virginia Military Survey 3164 at County Highway 296 center-line station 537+32 (Logan County Location Plan S.H. 235 Sec's C-1 & C-2, 1948).

THENCE, with the center-line of County Highway 296 (variable widths), S 82°-47'-38"E, a distance of 1525.00 feet to a MAG nail found at the TRUE POINT OF BEGINNING.

THENCE, with the east line of the Chad E. Ferguson 6.427 acre tract (O.R. 734, Pg. 842), N 11°-55'-53"E, a distance of 808.86 feet to a 5/8 inch iron rod found, passing a 5/8 inch iron rod found at 70.21 feet.

THENCE, with the south lines of the State of Ohio 2.308 acre tract (Vol. 317, Pg. 548) and the Jeffrey W. Johnson original 1-1/2 acre tract (O.R. 622, Pg. 725, Parcel I, Tract II), with a curve to the right, having a central angle of 6°-10'-15", a radius of 3869.09 feet, an arc length of 416.71 feet, a chord bearing N 79°-12'-59"E, a distance of 416.51 feet to a 5/8 inch iron rod found.

THENCE, S 11°-55'-53"W, a distance of 352.70 feet to a 5/8 inch iron rod set.

THENCE, S 82°-47'-38"E, a distance of 166.09 feet to a 5/8 inch iron rod set.

THENCE, S 11°-55'-53"W, a distance of 585.54 feet to a MAG nail set on the center-line of County Highway 296, passing a 5/8 inch iron rod set at 513.80 feet.

THENCE, with the center-line of County Highway 296, the following two courses:

With a curve to the left, having a central angle of 0°-30'-10", a radius of 7813.06 feet, an arc length of 68.57 feet, a chord bearing N 82°-32'-33"W, a distance of 68.57 feet to a MAG nail found.

N 82°-47'-38"W, a distance of 483.00 feet to the point of beginning.

Containing 9.963 acres, of which 0.897 acre is within the highway right-of-way.

The basis for bearings is the center-line of County Highway 296 at the northwesterly line of Virginia Military Survey 3164, being S 82°-47'-38"E, and all other bearings are from angles and distances measured in a field survey by Lee Surveying and Mapping Co., Inc. on April 17, 2006.

Description prepared by:

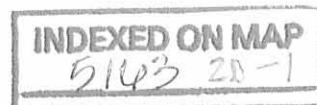


*[Handwritten Signature]*

Jeffrey I. Lee  
Professional Surveyor 6359  
April 18, 2006

3467046

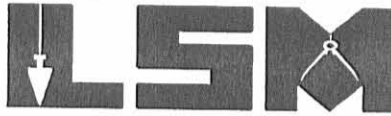
ORIGINAL STAMP IN GREEN



REC'D 4-21-06 SML/OK  
**Lee Surveying and Mapping Co., Inc.**

Land Surveys • Topography • Subdivisions • Construction Layout

117 N. Madriver St.  
Bellefontaine OH 43311



Phone: (937) 593-7335  
Fax: (937) 593-7444

**1975-2005 - 30 YEARS OF EXCELLENCE**

**PEW  
6.472 ACRES**

Lying in Virginia Military Survey 3164, Perry Township, Logan County, Ohio.

Being out of the Roger A. Pew and Cynthia L. Pew 8.612 acre tract as deeded and described in Official Record 716, Page 240, Exhibit "B" of the Logan County Records of Deeds and being more particularly described as follows:

Commencing at a MAG nail found at the intersection of the center-line of County Highway 296 and the northwesterly line of Virginia Military Survey 3164 at County Highway 296 center-line station 537+32 (Logan County Location Plan S.H. 235 Sec's C-1 & C-2, 1948).

THENCE, with the center-line of County Highway 296 (variable widths), S 82°-47'-38"E, a distance of 2008.00 feet to a MAG nail found.

THENCE, with a curve to the right, having a central angle of 0°-30'-10", a radius of 7813.06 feet, an arc length of 68.57 feet, a chord bearing S 82°-32'-33"E, a distance of 68.57 feet to a MAG nail set at the TRUE POINT OF BEGINNING.

THENCE, N 11°-55'-53"E, a distance of 585.54 feet to a 5/8 inch iron rod set, passing a 5/8 inch iron rod set at 71.74 feet.

THENCE, N 82°-47'-38"W, a distance of 166.09 feet to a 5/8 inch iron rod set.

THENCE, with the east line of the Roger A. Pew 7.823 acre tract (O.R. 716, Pg. 240, Exhibit "A"), N 11°-55'-53"E, a distance of 352.70 feet to a 5/8 inch iron rod found.

THENCE, with the south lines of the Jeffrey W. Johnson original 1-1/2 acre tract (O.R. 622, Pg. 725, Parcel I, Tract II), the following two courses:

With a curve to the right, having a central angle of 3°-36'-24", a radius of 3869.09 feet, an arc length of 243.56 feet, a chord bearing N 84°-06'-18"E, a distance of 243.52 feet to a 5/8 inch iron rod found.

N 85°-54'-31"E, a distance of 158.91 feet to a 5/8 inch iron rod found.

THENCE, with the west line of the William Blair Connell, Trustee 9.557 acre tract (O.R. 624, Pg. 984, Exhibit "A"), S 11°-55'-53"W, a distance of 1029.88 feet to a MAG nail found on the center-line of County Highway 296, passing a 5/8 inch iron rod found at 966.79 feet.

THENCE, with the center-line of County Highway 296, with a curve to the left, having a central angle of 1°-36'-33", a radius of 7813.06 feet, an arc length of 219.44 feet, a chord bearing N 81°-29'-11"W, a distance of 219.43 feet to the point of beginning.

Containing 6.472 acres, of which 0.338 acre is within the highway right-of-way.

The basis for bearings is the center-line of County Highway 296 at the northwesterly line of Virginia Military Survey 3164, being S 82°-47'-38"E, and all other bearings are from angles and distances measured in a field survey by Lee Surveying and Mapping Co., Inc. on April 17, 2006.



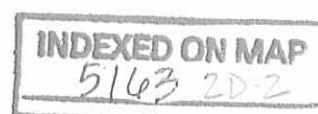
ORIGINAL STAMP IN GREEN

Description prepared by:

A handwritten signature in black ink, appearing to read 'Jeffrey I. Lee'.

Jeffrey I. Lee  
Professional Surveyor 6359  
April 18, 2006

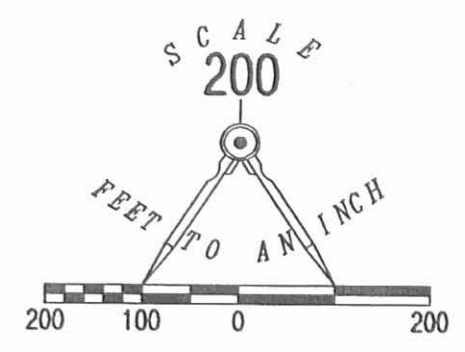
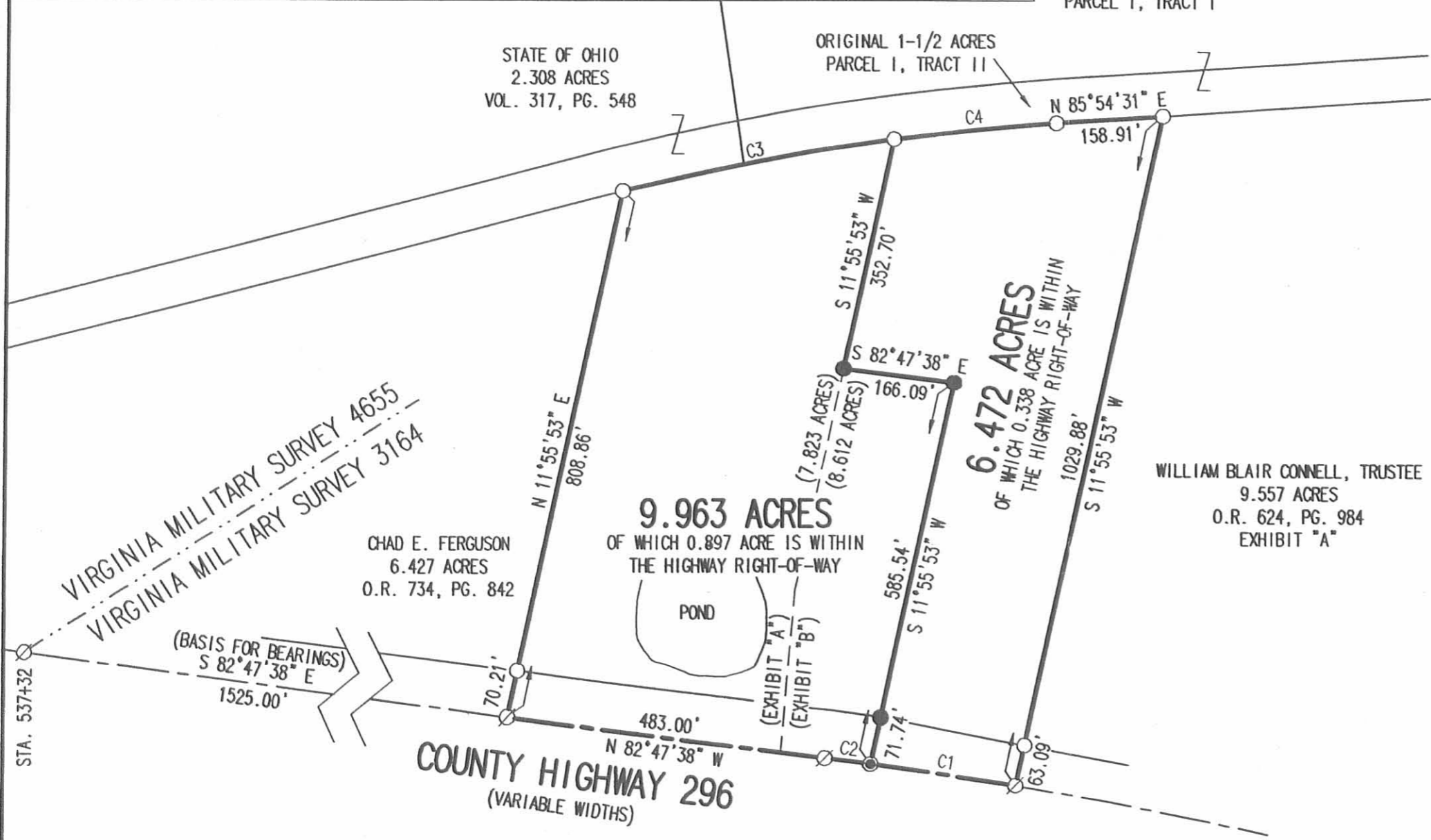
3467046



REC'D 4-21-06 SWY OK

CURVE	DELTA ANGLE	RADIUS	ARC LENGTH	CHORD BEARING	CHORD LENGTH
C1	01°36'33"	7813.06'	219.44'	N 81°29'11" W	219.43'
C2	00°30'10"	7813.06'	68.57'	N 82°32'33" W	68.57'
C3	06°10'15"	3869.09'	416.71'	N 79°12'59" E	416.51'
C4	03°36'24"	3869.09'	243.56'	N 84°06'18" E	243.52'

JEFFREY W. JOHNSON  
ORIGINAL 5.07 ACRES  
O.R. 622, PG. 725  
PARCEL I, TRACT I



LEGEND:

- ⊙ MAG NAIL FOUND
- MAG NAIL SET
- 5/8 INCH IRON ROD FOUND
- 5/8 INCH IRON ROD SET

SURVEY OF TWO TRACTS OUT OF THE  
ROGER A. PEW AND CYNTHIA L. PEW.  
7.823 ACRE TRACT AND 8.612 ACRE TRACT  
OFFICIAL RECORD 716, PAGE 240  
EXHIBIT "A" AND EXHIBIT "B"  
VIRGINIA MILITARY SURVEY 3164  
PERRY TOWNSHIP  
LOGAN COUNTY, OHIO

REFERENCES:  
LOGAN COUNTY ENGINEER'S FILE:  
L-45, LOGAN COUNTY LOCATION PLAN  
S.H. 235 SEC'S C-1 & C-2. 1948

2 WORKING DAYS  
**BEFORE YOU DIG**  
CALL TOLL FREE **800-362-2764**  
OHIO UTILITIES PROTECTION SERVICE.

SURVEYED BY:



*Jeffrey I. Lee*  
JEFFREY I. LEE  
PROFESSIONAL SURVEYOR 6359  
APRIL 17, 2006

COPYRIGHT 2006 BY:  
LEE SURVEYING & MAPPING CO., INC.  
117 North Madriver Street  
BELLEFONTAINE, OHIO 43311  
(937) 593-7335  
KSR D0406 3467046 CTEL296.ASC L-3467-3

INDEXED ON MAP  
5163 2F

# Lee Surveying and Mapping Co., Inc.

Land Surveys • Topography • Subdivisions • Construction Layout

117 N. Madriver St.  
Bellefontaine OH 43311



Phone: (937) 593-7335  
Fax: (937) 593-7444

## COUNTYTYME GROVE CITY, LTD 5.136 ACRES TRACT G-1

Lying in Virginia Military Survey 3164, Perry Township, Logan County, Ohio.

Being out of the Countrytyme Grove City, Ltd. 10.251 acre tract as deeded and described in Official Record 615, Page 56, Exhibit G, of the Logan County Records of Deeds and being more particularly described as follows:

Beginning at a MAG nail set at the intersection of the center-line of County Highway 296 (width varies) and the west line of Virginia Military Survey 3164 on County Highway 296 center-line station 537+32.

THENCE, with the center-line of County Highway 296 (width varies), S 82°-47'-38" E, a distance of 2008.00 feet to a MAG nail set on center-line P.C. station 557+40.04.

THENCE, with the center-line of County Highway 296, a curve to the right having a central angle of 4°-56'-20", a radius of 7813.06 feet, an arc length of 673.50 feet and a chord bearing S 80°-19'-28" E, a distance of 673.29 feet to a MAG nail set on center-line PT station 564+00.

THENCE, N 12°-08'-42" E, a distance of 60.00 feet to a 5/8 inch iron rod set at the TRUE POINT OF BEGINNING.

THENCE, with the east line of the Countrytyme Grove City, Ltd. 9.557 acre tract (O.R. 615, Pg. 56, Exhibit F) N 11°-55'-53" E, a distance of 1072.55 feet to a 5/8 inch iron rod found.

THENCE, S 10°-06'-41" E, a distance of 1087.64 feet to a 5/8 inch iron rod set.

THENCE, with the rights-of-way of County Highway 144 and County Highway 296, the following two (2) courses:

With a curve to the right having a central angle of 13°-35'-21", a radius of 894.93 feet, an arc length of 212.26 feet and a chord bearing S 87°-48'-54" W, a distance of 211.76 feet to a 5/8 inch iron rod found;

N 81°-40'-13" W, a distance of 203.23 feet to the point of beginning.

Containing 5.136 acres.

The basis for bearings is the center-line of County Highway 296 at the point of beginning, being N 82°-47'-38" W, and all other bearings are from angles and distances measured in a field survey by Lee Surveying and Mapping Co., Inc. on December 12, 2002.

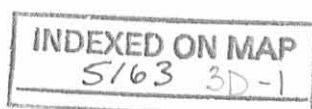
Description prepared by:



ORIGINAL STAMP IN GREEN

*Jeffrey I. Lee*  
Jeffrey I. Lee  
Professional Surveyor 6359  
December 16, 2002  
Revised January 21, 2003

L-3467

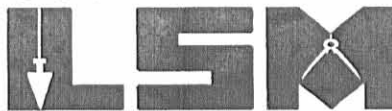




# Lee Surveying and Mapping Co., Inc.

Land Surveys • Topography • Subdivisions • Construction Layout

117 N. Madriver St.  
Bellefontaine OH 43311



Phone: (937) 593-7335  
Fax: (937) 593-7444

## COUNTYTYME GROVE CITY, LTD 5.115 ACRES TRACT H

Lying in Virginia Military Survey 3164, Perry Township, Logan County, Ohio.

Being out of the Countrytyme Grove City, Ltd. 10.251 acre tract as deeded and described in Official Record 615, Page 56, Exhibit G, of the Logan County Records of Deeds and being more particularly described as follows:

Beginning at a MAG nail set at the intersection of the center-line of County Highway 296 (width varies) and the west line of Virginia Military Survey 3164 on County Highway 296 center-line station 537+32.

THENCE, with the center-line of County Highway 296 (width varies), S 82°-47'-38" E, a distance of 2008.00 feet to a MAG nail set on center-line P.C. station 557+40.04.

THENCE, with the center-line of County Highway 296, a curve to the right having a central angle of 4°-56'-20", a radius of 7813.06 feet, an arc length of 673.50 feet and a chord bearing S 80°-19'-28" E, a distance of 673.29 feet to a MAG nail set on center-line PT station 564+00.

THENCE, N 12°-08'-42" E, a distance of 60.00 feet to a 5/8 inch iron rod set.

THENCE, with the rights-of-way of County Highway 144 and County Highway 296, the following two (2) courses:

S 81°-40'-13" E, a distance of 203.23 feet to a 5/8 inch iron rod found.

With a curve to the right having a central angle of 13°-35'-21", a radius of 894.93 feet, an arc length of 212.26 feet and a chord bearing N 87°-48'-54" E, a distance of 211.76 feet to a 5/8 inch iron rod set at the TRUE POINT OF BEGINNING.

THENCE, N 10°-06'-41" W, a distance of 1087.64 feet to a 5/8 inch iron rod found.

THENCE, with the west lines of the Robert D. Dill original 5.0 acre tract (Vol. 229, Pg. 289) and the Paul M. Tracey 0.54 acre tract (Vol. 385, Pg. 666), S 31°-39'-51" E, a distance of 1095.72 feet to a 5/8 inch iron rod set on the northerly right-of-way of County Highway 144.

THENCE, with the rights-of-way of County Highway 144 and County Highway 296, the following three (2) courses:

S 65°-51'-51" W, a distance of 162.30 feet to a 5/8 inch iron rod found;

With a curve to the right having a central angle of 15°-51'-04", a radius of 894.93 feet, an arc length of 247.58 feet and a chord bearing S 73°-05'-42" W, a distance of 246.80 feet to the point of beginning.

Containing 5.115 acres.

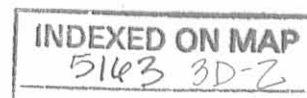
The basis for bearings is the center-line of County Highway 296 at the point of beginning, being N 82°-47'-38" W, and all other bearings are from angles and distances measured in a field survey by Lee Surveying and Mapping Co., Inc. on December 12, 2002.



ORIGINAL STAMP IN GREEN

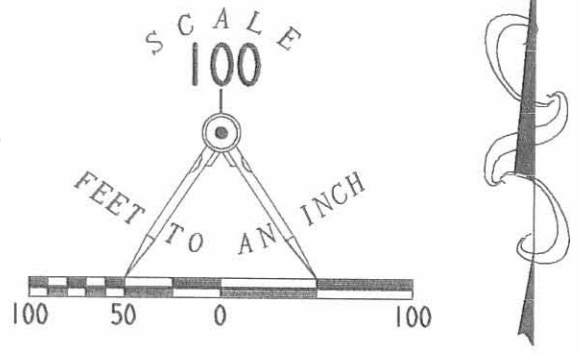
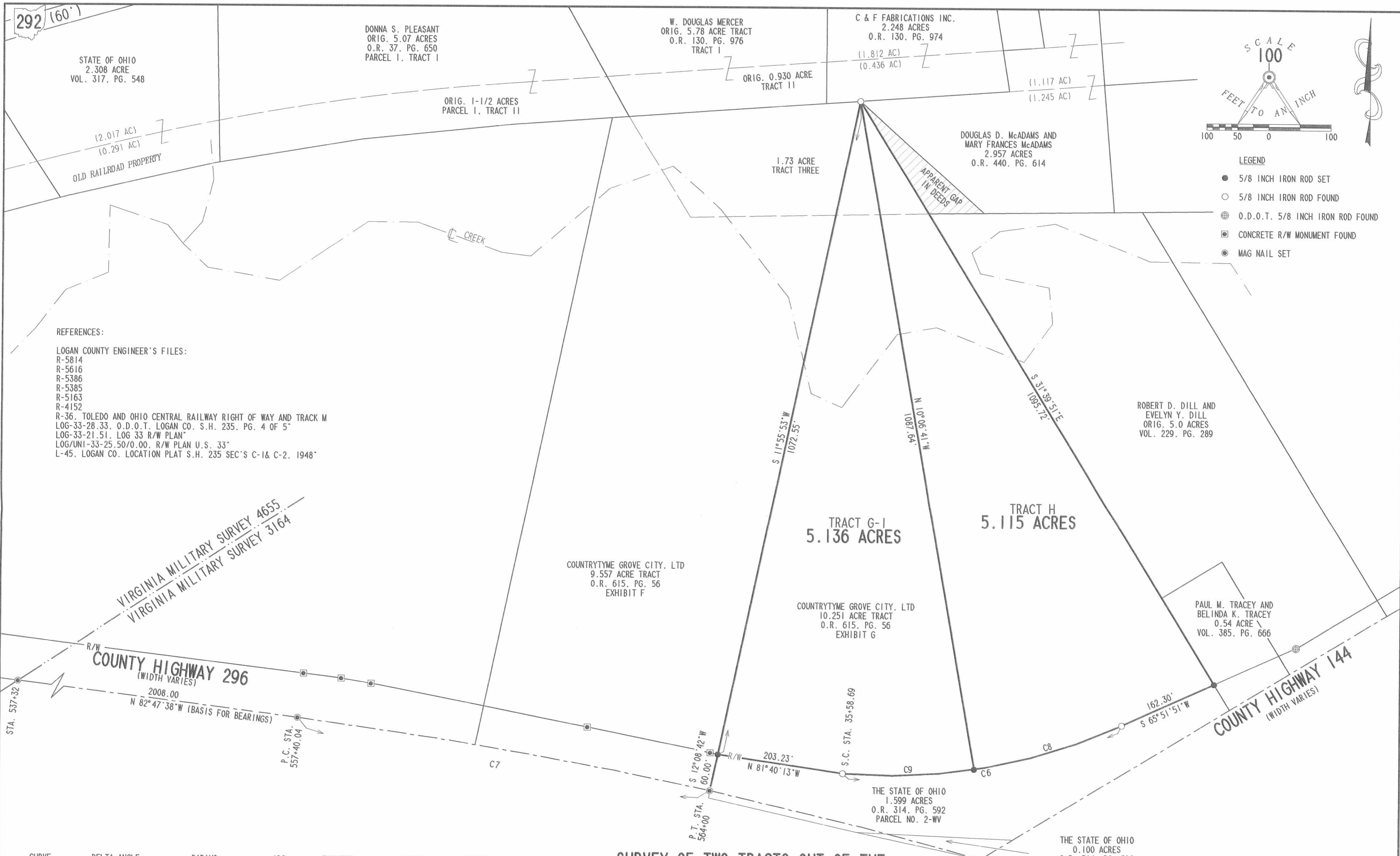
Description prepared by:

Jeffrey I. Lee  
Professional Surveyor 6359  
December 16, 2002  
Revised January 21, 2003



L-3467

RECID 1-29-03 SMJ BK



- LEGEND**
- 5/8 INCH IRON ROD SET
  - 5/8 INCH IRON ROD FOUND
  - ⊙ O.D.O.T. 5/8 INCH IRON ROD FOUND
  - CONCRETE R/W MONUMENT FOUND
  - MAG NAIL SET

**REFERENCES:**  
 LOGAN COUNTY ENGINEER'S FILES:  
 R-5814  
 R-5616  
 R-5386  
 R-5385  
 R-5163  
 R-4152  
 R-36. TOLEDO AND OHIO CENTRAL RAILWAY RIGHT OF WAY AND TRACK M  
 LOG-33-28.33. O.D.O.T. LOGAN CO. S.H. 235. PG. 4 OF 5  
 LOG-33-21.51. LOG 33 R/W PLAN  
 LOG/UNI-33-25.50/0.00. R/W PLAN U.S. 33  
 L-45. LOGAN CO. LOCATION PLAT S.H. 235 SEC'S C-1& C-2. 1948"

VIRGINIA MILITARY SURVEY 4655  
 VIRGINIA MILITARY SURVEY 3164

R/W  
**COUNTY HIGHWAY 296**  
 (WIDTH VARIES)  
 2008.00  
 N 82° 47' 38" W (BASIS FOR BEARINGS)

R/W  
**COUNTY HIGHWAY 144**  
 (WIDTH VARIES)

CURVE	DELTA ANGLE	RADIUS	ARC	TANGENT	CHORD	CHORD
C 6	29° 26' 25"	894.93'	459.84'	235.12'	454.80'	S 79° 53' 22" W
C 7	4° 56' 20"	7813.06'	673.50'	336.96'	673.29'	N 80° 19' 28" W
C 8	15° 51' 04"	894.93'	247.58'	124.59'	246.80'	S 73° 05' 42" W
C 9	13° 35' 21"	894.93'	212.26'	106.63'	211.76'	S 87° 48' 54" W

**SURVEY OF TWO TRACTS OUT OF THE  
 COUNTRYTYME GROVE CITY, LTD.  
 10.251 ACRE TRACT  
 OFFICIAL RECORD 615, PAGE 56, EXHIBIT G  
 VIRGINIA MILITARY SURVEY 3164  
 PERRY TOWNSHIP  
 LOGAN COUNTY, OHIO**



SURVEYED BY:  
  
 JEFFREY I. LEE  
 PROFESSIONAL SURVEYOR 6359  
 DECEMBER 12, 2002  
 REVISED JANUARY 21, 2003  
 COPYRIGHT 2003 BY:  
 LEE SURVEYING & MAPPING CO., INC.  
 117 North Medriver Street  
 BELLEFONTAINE, OHIO 43311  
 (937) 593-7335  
 ORIGINAL STAMP IN GREEN

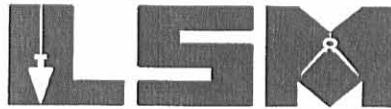
2 WORKING DAYS  
**BEFORE YOU DIG**  
 CALL TOLL FREE 800-362-2764  
 OHIO UTILITIES PROTECTION SERVICE.

INDEXED ON MAP  
 5163 3P

# Lee Surveying and Mapping Co., Inc.

Land Surveys • Topography • Subdivisions • Construction Layout

117 N. Madriver St.  
Bellefontaine OH 43311



Phone: (937) 593-7335  
Fax: (937) 593-7444

## FIFTH THIRD BANK, TRUSTEE 52.674 ACRES

Lying in Virginia Military Survey 3164, Perry Township, Logan County, Ohio.

Being all of the Fifth Third Bank, Trustee 21.517 acre tract as deeded and described in Volume 344, Page 793, the 31.67 acre tract as deeded and described in Volume 344, Page 401, Tract One, the 1.12 acre tract as deeded and described in Volume 344, Page 401, Tract Two and the 1.73 acre tract as deeded and described in Volume 344, Page 401, Tract Three of the Logan County Records of Deeds and being more particularly described as follows:

Beginning at a MAG nail set at the intersection of the center-line of County Highway 296 (width varies) and the west line of Virginia Military Survey 3164 on County Highway 296 center-line station 537+32.

THENCE, with the west line of Virginia Military Survey 3164 and the east line of the David R. Wood original 261.96 acre tract (O.R. 219, Pg. 927), N 56°-51'-01" E, a distance of 484.25 feet to a 5/8 inch iron rod set, passing a 5/8 inch iron rod set at 108.10 feet.

THENCE, with the south line of the David R. Wood original 5.0 acre tract (O.R. 221, Pg. 578) and the State of Ohio 2.308 acre tract (Vol. 317, Pg. 548), N 75°-14'-36" E, a distance of 1258.18 feet to a 5/8 inch iron rod set.

THENCE, with the south lines of the said 2.308 acre tract and the Donna S. Pleasant original 1-1/2 acre tract (O.R. 37, Pg. 650, Parcel I, Tract II), a curve to the right having a central angle of 10°-39'-54", a radius of 3869.09 feet, an arc length of 720.19 feet and a chord bearing N 80°-34'-34" E, a distance of 719.15 feet to a 5/8 inch iron rod set.

THENCE, with the south lines of the said 1-1/2 acre tract, the W. Douglas Mercer original 0.930 acre tract (O.R. 130, Pg. 976, Tract II), and the C & F Fabrications Inc. 2.248 acre tract (O.R. 130, Pg. 974), N 85°-54'-31" E, a distance of 560.09 feet to a 5/8 inch iron rod found.

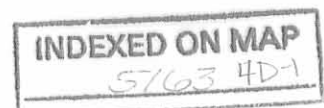
THENCE, with the west lines of the Robert D. Dill original 5.0 acre tract (Vol. 229, Pg. 289) and the Paul M. Tracey 0.54 acre tract (Vol. 385, Pg. 666), S 31°-39'-51" E, a distance of 1095.72 feet to a 5/8 inch iron rod set on northerly the right-of-way of County Highway 144.

THENCE, with the rights-of-way of County Highway 144 and County Highway 296, the following three (3) courses:

S 65°-51'-51" W, a distance of 162.30 feet to a 5/8 inch iron rod found;

With a curve to the right having a central angle of 29°-26'-25", a radius of 894.93 feet, an arc length of 459.84 feet and a chord bearing S 79°-53'-22" W, a distance of 454.80 feet to a 5/8 inch iron rod found;

N 81°-40'-13" W, a distance of 203.23 feet to a 5/8 inch iron rod set.



# Lee Surveying and Mapping Co., Inc.

Land Surveys • Topography • Subdivisions • Construction Layout

117 N. Madriver St.  
Bellefontaine OH 43311



Phone: (937) 593-7335  
Fax: (937) 593-7444

THENCE, S 12°-08'-42" W, a distance of 60.00 feet to a MAG nail set in the center-line of County Highway 296.

THENCE, with the center-line of County Highway 296, a curve to the left having a central angle of 4°-56'-20", a radius of 7813.06 feet, an arc length of 673.50 feet and a chord bearing N 80°-19'-28" W, a distance of 673.29 feet to a MAG nail set on center-line P.C. station 557+40.04.

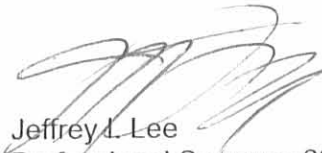
THENCE, with the center-line of County Highway 296, N 82°-47'-38" W, a distance of 2008.00 feet to the point of beginning.

Containing 52.674 acres, of which 4.160 acres are within the highway right-of-way.

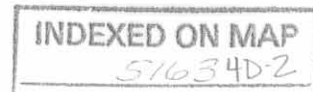
The basis for bearings is the center-line of County Highway 296 at the point of beginning, being N 82°-47'-38" W, and all other bearings are from angles and distances measured in a field survey by Lee Surveying and Mapping Co., Inc. on December 12, 2002.

Description prepared by:

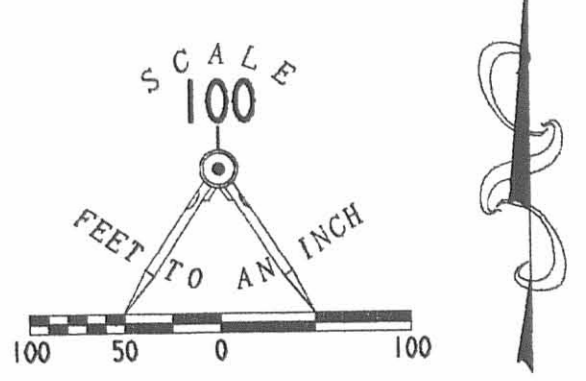


  
Jeffrey I. Lee  
Professional Surveyor 6359  
December 16, 2002

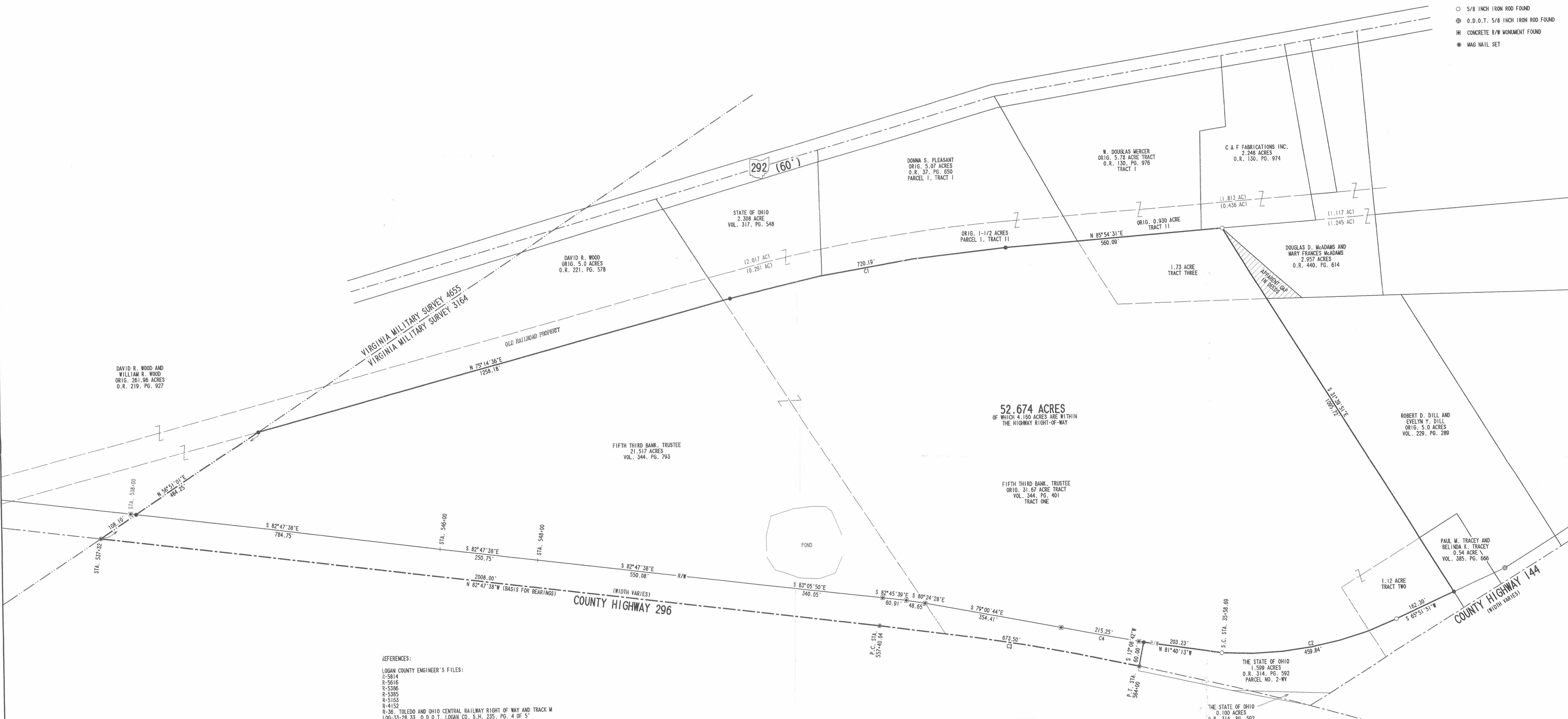
L-3467







- LEGEND**
- 5/8 INCH IRON ROD SET
  - 5/8 INCH IRON ROD FOUND
  - ⊗ O.D.O.T. 5/8 INCH IRON ROD FOUND
  - ⊠ CONCRETE R/W MONUMENT FOUND
  - MAG NAIL SET



**REFERENCES:**  
 LOGAN COUNTY ENGINEER'S FILES:  
 S-5814  
 R-5616  
 R-5386  
 R-5385  
 R-5163  
 R-4152  
 R-36, TOLEDO AND OHIO CENTRAL RAILWAY RIGHT OF WAY AND TRACK M  
 LOG-33-28-33, O.D.O.T. LOGAN CO. S.H. 235, PG. 4 OF 5  
 LOG-33-21-51, LOG 33 R/W PLANN  
 LOG/UNI-33-25-50/O.O.D. R/W PLAN U.S. 33  
 L-45, LOGAN CO. LOCATION PLAT S.H. 255 SEC'S C-1A C-2, 1948"

CURVE	DELTA ANGLE	RADIUS	ARC	TANGENT	CHORD	CHORD BEARING
C 1	10° 39' 54"	3869.09'	720.19'	361.14'	719.15'	N 80° 34' 34"E
C 2	29° 28' 25"	894.93'	459.84'	235.12'	454.80'	S 79° 53' 22"W
C 3	4° 56' 20"	7813.06'	673.50'	336.96'	673.29'	N 80° 19' 28"W
C 4	1° 33' 59"	7873.06'	215.25'	107.63'	215.24'	S 78° 38' 17"E

**RETRACEMENT SURVEY OF THE FIFTH THIRD BANK, TRUSTEE 21.517 ACRE TRACT VOLUME 344, PAGE 793 AND THE 31.67 ACRE TRACT VOLUME 344, PAGE 401, TRACT ONE 1.12 ACRE TRACT VOLUME 344, PAGE 401, TRACT TWO AND 1.73 ACRE TRACT VOLUME 344, PAGE 401, TRACT THREE VIRGINIA MILITARY SURVEY 3164 PERRY TOWNSHIP LOGAN COUNTY, OHIO**



SURVEYED BY:  
 JEFFREY L. LEE  
 PROFESSIONAL SURVEYOR 6359  
 DECEMBER 12, 2002  
 COPYRIGHT 2001 BY:  
**LEE SURVEYING & MAPPING CO., INC.**  
 17 North Main Street  
 Bellefontaine, Ohio 43311  
 (637) 593-7335  
 D 407 CTEL2968 L-3467

2 WORKING DAYS  
**BEFORE YOU DIG**  
 CALL TOLL FREE 800-362-2764  
 OHIO UTILITY PROTECTION SERVICE

INDEXED ON MAP  
 5/16/03 HP

Lester Sharp Survey Description  
January, 1973

Being situated in Perry Township, Logan County, Ohio; and being a part of V.M.S. #3164.

Beginning at the intersection of the centerlines of State Route 33 and County Road 144.

Thence with the center of County Road 144 N 59° - 03'E 462.8 feet to a iron.

Thence N 31° - 34'W 932.0 feet to a iron.

Thence N 89° - 08'E 385.0 feet to a iron.

Thence N 32° - 49'W 231.0 feet to a iron in the south line of the T.& O.C. R.R..

Thence with the south line of the T.& O.C. R.R. S 86° - 08'W 946.5 feet to the P.C..

Thence with the curve whose radius is 3786.0 feet to the left 703.0 feet to the P.T. of said curve.

Thence S 75° - 29'W 17.5 feet to a corner post.

Thence S 33° - 00'E 1020.0 feet to a point in the center of State Route 33.

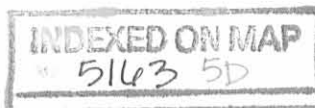
Thence with the center of State Route 33 which is on a curve whose radius is 7813.0 feet to the right 950.0 feet to the point of beginning.

Containing 34.13 acres more or less. Being all of a 31.67 acre tract, a 1.12 acre tract and a 1.73 acre tract.

---

Owen K. Shirk

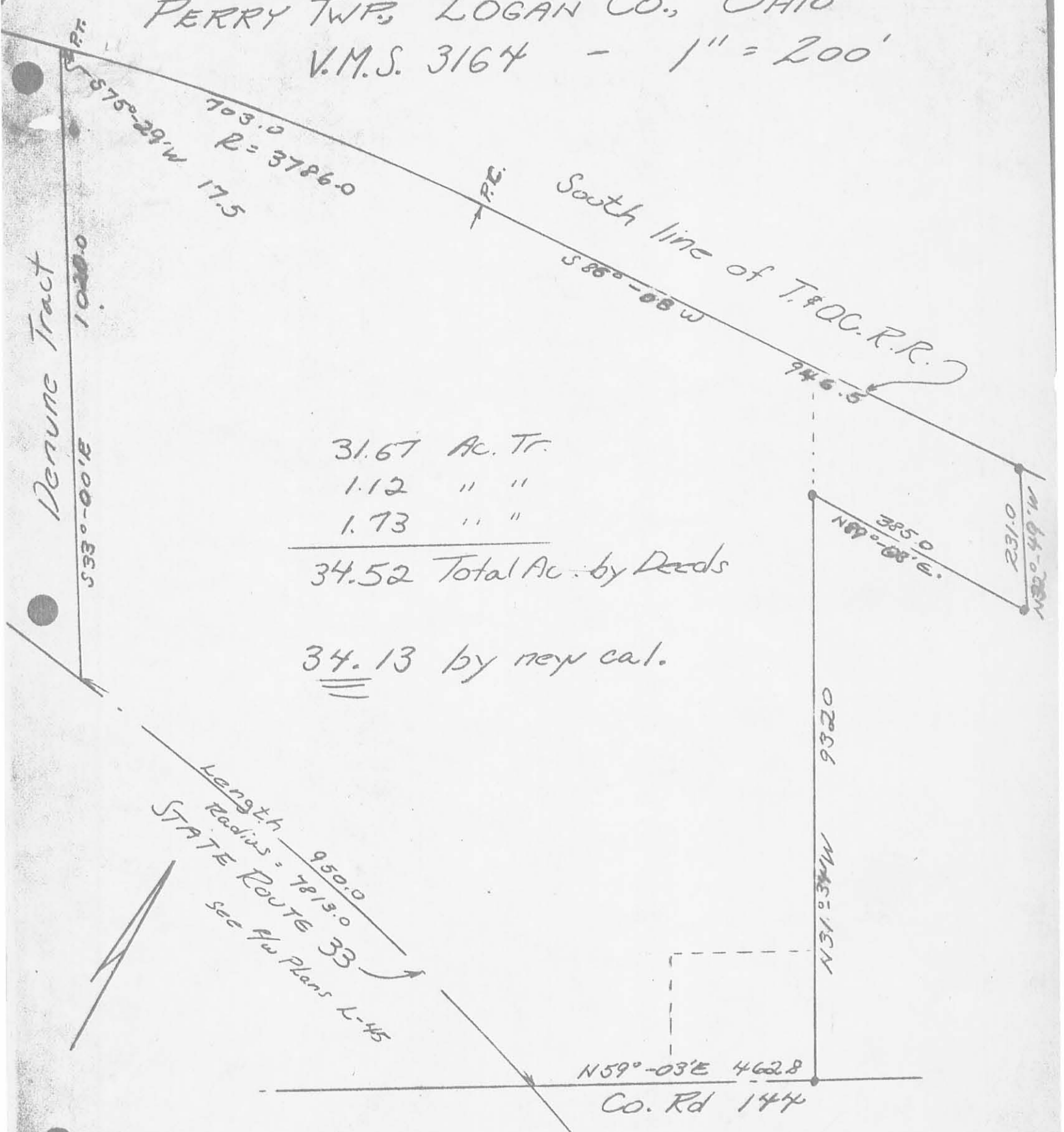
Surveyor 4271



SHARP SURVEY

PERRY TWP., LOGAN CO., OHIO

V.M.S. 3164 - 1" = 200'



31.67 Ac. Tr.

1.12 " "

1.73 " "

34.52 Total Ac. by Deeds

34.13 by new cal.

Length 950.0  
 Radius = 7813.0  
 STATE ROUTE 33  
 See Plw Plans L-45

N 59°-03' E 462.8

Co. Rd 147

5163 5P

INDEXED ON MAP

Owen K. Shirk

Surveyor 4271

Jan., 1973