

# Lee Surveying and Mapping Co., Inc.

Land Surveys • Topography • Subdivisions • Construction Layout

117 N. Madriver St.  
Bellefontaine OH 43311



Phone: (937) 593-7335  
Fax: (937) 593-7444

## COATS 1.300 ACRES

Lying in Virginia Military Survey 6155, Perry Township, Logan County, Ohio.

Being out of the Linda D. Coats original 2.614 acre tract as deeded and described in Official Record 376, Page 544 of the Logan County Records and Deeds and being more particularly described as follows:

Beginning at a P.K. nail found on the centerline of County Highway 8 at station 144 + 89.4 (Logan County Engineer's Field Book 560, Page 70).

THENCE, with the centerline of County Highway 8 (60 feet wide), N 66°-09'-57" E, a distance of 561.60 feet to station 150 + 51.

THENCE, with the center-line of County Highway 8, N 66°-30'-00" E, a distance of 691.89 feet to a MAG nail set at the TRUE POINT OF BEGINNING.

THENCE, with the center-line of County Highway 8, N 66°-30'-00" E, a distance of 60.01 feet to a railroad spike found.

THENCE, with a west line of the Clifford A. Cronkleton 53.46 acre tract (Vol. 361, page 67), S 22°-31'-04" E, a distance of 533.75 feet to a 5/8 inch iron rod found, passing a 1 inch iron rod found at 30.00 feet.

THENCE, with a north line of said 53.46 acre tract, N 87°-40'-54" W, a distance of 230.72 feet to a 1 inch iron rod found.

THENCE, with an east line of the George W. Conkleton, Trustee, 58.96 acre tract, (O.R. 184, Pg. 310 Exhibit C, Tract Two), N 30°-04'-42" W, a distance of 128.26 feet to a 5/8 inch iron rod set.


THENCE, N 66°-30'-00" E, a distance of 166.28 feet to a 5/8 inch iron rod set.

THENCE, N 22°-31'-04" W, a distance of 305.82 feet to the point of beginning, passing a 5/8 inch iron rod set at 275.82 feet.

Containing 1.300 acre of which 0.041 acre is within highway right-of-way.

The basis for bearings is the center-line of County Highway 8 being N 66°-30'-00" E, and all other bearings are from angles and distances measured in a field survey by Lee Surveying and Mapping Co., Inc. on December 10, 2002.

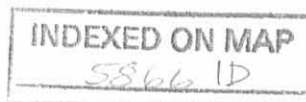
Description prepared by:

  
Jeffrey I. Lee  
Professional Surveyor 6359  
(December 18, 2002)



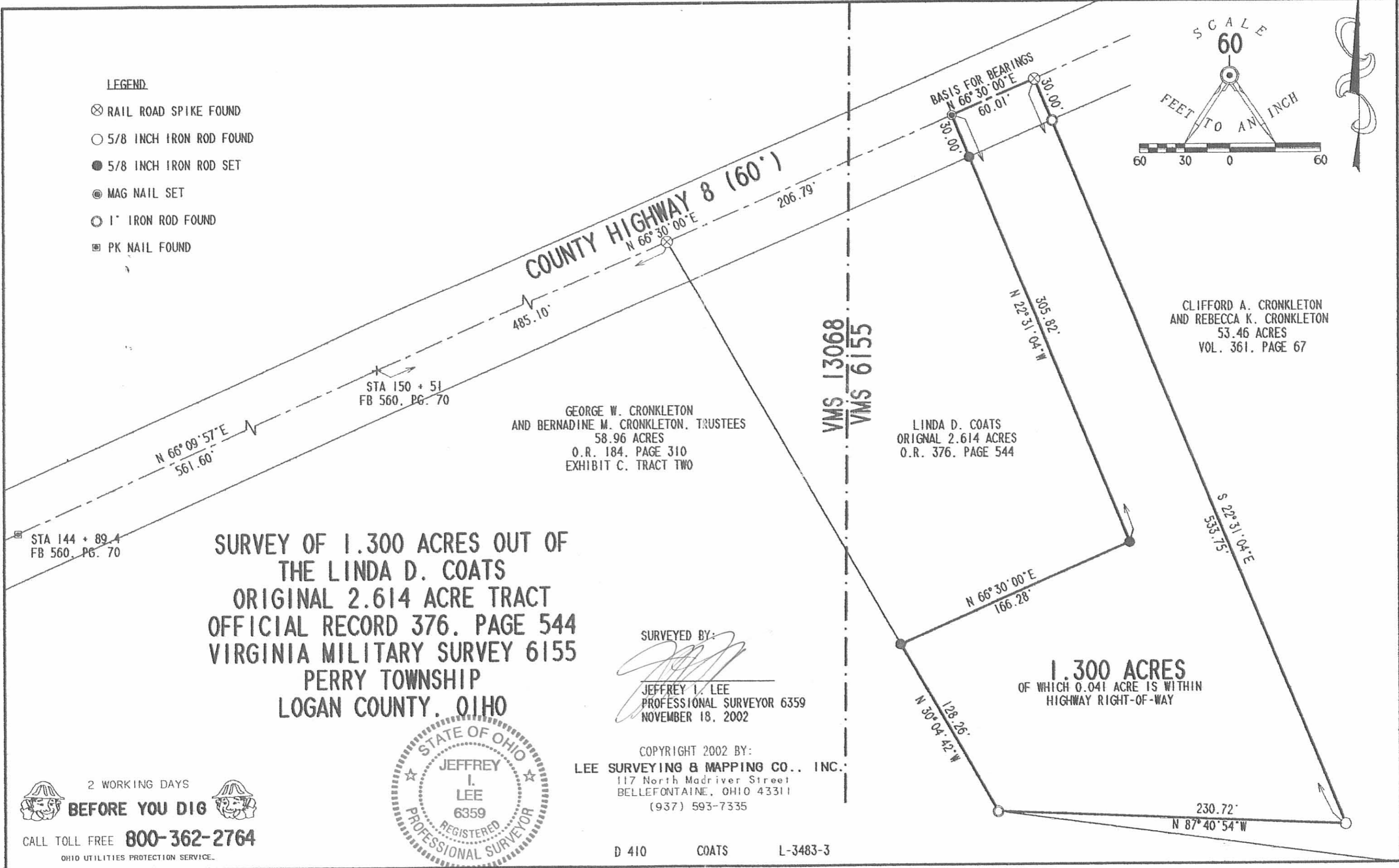
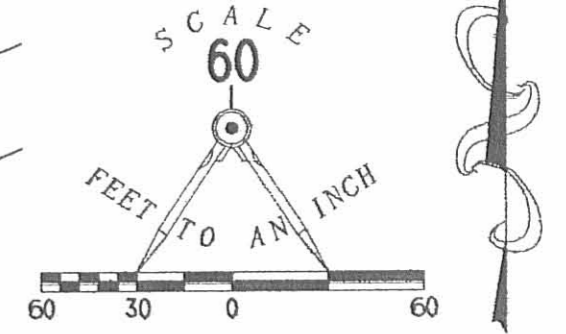
ORIGINAL STAMP IN GREEN

L-3483



LEGEND

- ⊗ RAIL ROAD SPIKE FOUND
- 5/8 INCH IRON ROD FOUND
- 5/8 INCH IRON ROD SET
- ⊙ MAG NAIL SET
- 1" IRON ROD FOUND
- ⊠ PK NAIL FOUND



**SURVEY OF 1.300 ACRES OUT OF  
THE LINDA D. COATS  
ORIGINAL 2.614 ACRE TRACT  
OFFICIAL RECORD 376. PAGE 544  
VIRGINIA MILITARY SURVEY 6155  
PERRY TOWNSHIP  
LOGAN COUNTY, OHIO**

GEORGE W. CRONKLETON  
AND BERNADINE M. CRONKLETON, TRUSTEES  
58.96 ACRES  
O.R. 184. PAGE 310  
EXHIBIT C. TRACT TWO

LINDA D. COATS  
ORIGINAL 2.614 ACRES  
O.R. 376. PAGE 544

CLIFFORD A. CRONKLETON  
AND REBECCA K. CRONKLETON  
53.46 ACRES  
VOL. 361. PAGE 67

**1.300 ACRES**  
OF WHICH 0.041 ACRE IS WITHIN  
HIGHWAY RIGHT-OF-WAY

SURVEYED BY:

*Jeffrey I. Lee*  
JEFFREY I. LEE  
PROFESSIONAL SURVEYOR 6359  
NOVEMBER 18, 2002

COPYRIGHT 2002 BY:  
**LEE SURVEYING & MAPPING CO., INC.**  
117 North Madriver Street  
BELLEFONTAINE, OHIO 43311  
(937) 593-7335



2 WORKING DAYS  
**BEFORE YOU DIG**  
CALL TOLL FREE **800-362-2764**  
OHIO UTILITIES PROTECTION SERVICE.

D 410 COATS L-3483-3

INDEXED ON MAP  
58661P

ORIGINAL STAMP IN GREEN

Received 10/1/93  
OK GCH



# Lee Surveying and Mapping Co.



Farm Surveys • Lot Surveys • Topography • Subdivisions • Construction Layout

143 EAST COLUMBUS AVENUE  
BELLEFONTAINE, OHIO 43311

(513) 593-7335

JEFFREY I. LEE, P.S.

## CRONKLETON 2.822 ACRES

Lying in Virginia Military Survey 755-6155, Perry Township, Logan County, Ohio.

Being out of the Clifford A. Cronkleton original 53.46 acre tract as deeded and described in Volume 361, Page 67 of the Logan County Records of Deeds and being more particularly described as follows:

Beginning at a railroad spike set on the center-line of County Highway 8 at the northeast corner of the said 53.46 acre tract.

THENCE, with the westerly line of the Sanford E. Waugh 11.627 acre tract (Vol. 338, Pg. 679), S 22°-50'-14" E, a distance of 866.47 feet to a 5/8 inch iron rod set at the southwest corner of the said 11.627 acre tract.

THENCE, N 85°-20'-44" W, a distance of 395.93 feet to a 5/8 inch iron rod set.

THENCE, N 6°-41'-08" W, a distance of 211.98 feet to a 5/8 inch iron rod set.

THENCE, N 74°-29'-12" E, a distance of 234.16 feet to a 5/8 inch iron rod set.

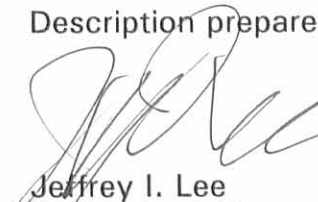
THENCE, N 22°-50'-14" W, a distance of 509.24 feet to a railroad spike set."

THENCE, with the center-line of County Highway 8, N 66°-30'-00" E, a distance of 60.00 feet to the point of beginning.

Containing 2.822 acres of which 0.041 acre is within the highway right-of-way.

The basis for bearings is based upon the center-line of County Highway 8 being N 66°-30'-00" E, and all other bearings are from angles and distances measured in a field survey by Lee Surveying and Mapping Company on October 4, 1993.

Description prepared by:

  
Jeffrey I. Lee  
Professional Surveyor 6359  
October 5, 1993



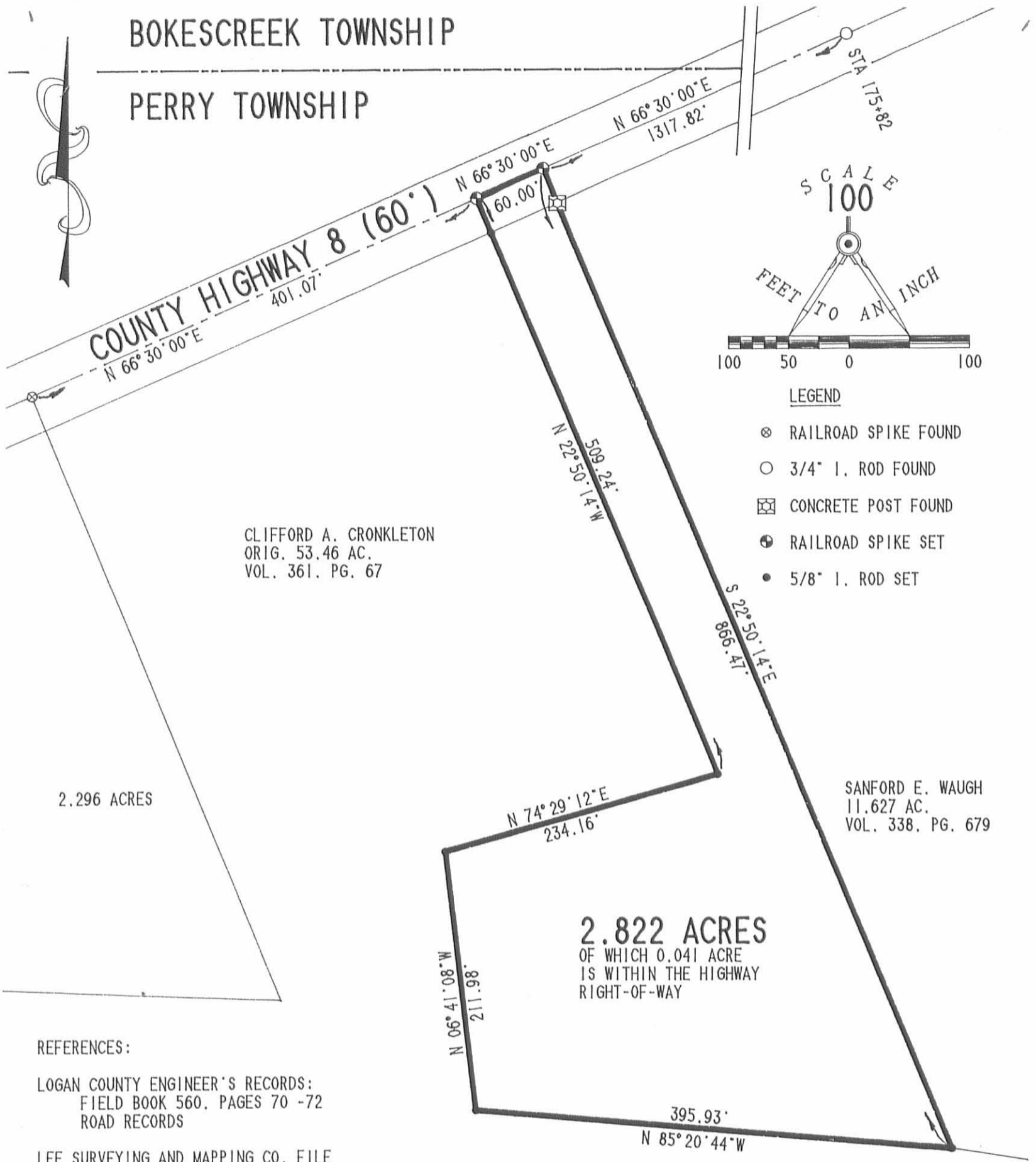
L 143

ORIGINAL STAMP IN GREEN

INDEXED ON MAP  
58662D

BOKESCREEK TOWNSHIP

PERRY TOWNSHIP



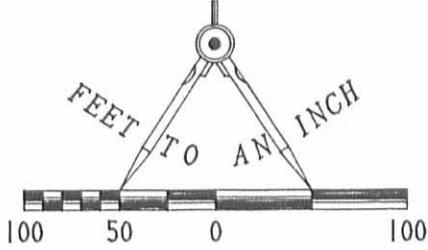
CLIFFORD A. CRONKLETON  
ORIG. 53.46 AC.  
VOL. 361. PG. 67

2.296 ACRES

SANFORD E. WAUGH  
11.627 AC.  
VOL. 338. PG. 679

**2.822 ACRES**  
OF WHICH 0.041 ACRE  
IS WITHIN THE HIGHWAY  
RIGHT-OF-WAY

SCALE  
100



LEGEND

- ⊗ RAILROAD SPIKE FOUND
- 3/4" I. ROD FOUND
- ⊠ CONCRETE POST FOUND
- ⊕ RAILROAD SPIKE SET
- 5/8" I. ROD SET

REFERENCES:

LOGAN COUNTY ENGINEER'S RECORDS:  
FIELD BOOK 560, PAGES 70 -72  
ROAD RECORDS

LEE SURVEYING AND MAPPING CO. FILE  
SURVEY OF 2.296 ACRE TRACT

SURVEY OF 2.822 ACRES OUT OF THE  
CLIFFORD A. CRONKLETON  
ORIGINAL 53.46 ACRE TRACT  
VOLUME 361. PAGE 67  
VIRGINIA MILITARY SURVEY 755-6155  
PERRY TOWNSHIP  
LOGAN COUNTY, OHIO

SURVEYED BY:

*Jeffrey I. Lee*  
JEFFREY I. LEE  
PROFESSIONAL SURVEYOR 6359  
OCTOBER 4, 1993



**LEE SURVEYING & MAPPING CO.**  
143 East Columbus Avenue  
BELLEFONTAINE, OHIO 43311  
(513) 593-7335

INDEXED ON MAP  
5866 2P

ORIGINAL STAMP IN GREEN

D 224 CRONKLET

L 143-4

# Lee Surveying and Mapping Co.



Farm Surveys • Lot Surveys • Descriptions • Subdivisions

855 EAST SANDUSKY AVENUE  
BELLEFONTAINE, OHIO 43311

CLAYTON M. LEE, P. S.  
(513) 593-5780

0.318 ACRES

GEORGE CRONKLETON TO CLIFFORD CRONKLETON

Lying in V. M. S. 6155, Perry Township, Logan County, Ohio and being out of the very Northeast corner of that 58.96 acre tract as described in Vol. 326, Page 51 and better described as follows:

Beginning at a Railroad spike set in the center-line of County Highway No. 8 and marking the said Northeast corner of the 58.96 acre tract and being designated as Station 155+99 in Book 560, Page 70 of the Logan County Engineers Field Book.

THENCE, S  $21^{\circ}$ -36' E, with the said East property line a distance of 433.6 feet to an iron rod set at the Southeast side of an old corner post marking another corner of the said 58.96 acre tract and also being the South tip of this triangular strip.

THENCE, N  $30^{\circ}$ -01' W, following a fence-line, a distance of 436.2 feet to a railroad spike set in the center-line of County Highway No. 8.

THENCE, N  $66^{\circ}$ -30' E, with the center-line, a distance of 63.9 feet to the point of beginning. Containing 0.318 acres.

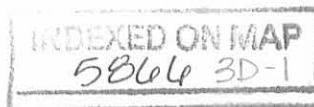
Next preceding deed, Vol. 326, Page 51.

Surveyed by

*Clayton M. Lee*

Clayton M. Lee

Ohio Reg. Surveyor No. 6181



# Lee Surveying and Mapping Co.



Farm Surveys • Lot Surveys • Descriptions • Subdivisions

855 EAST SANDUSKY AVENUE  
BELLEFONTAINE, OHIO 43311

CLAYTON M. LEE, P. S.  
(513) 593-5780

2.614 ACRES

CLIFFORD CRONKLETON TO \_\_\_\_\_

Lying in V.M.S. 6155, Perry Township, Logan County, Ohio and being out of that 53.46 acre tract as described in Volume 361, Page 67 of the Logan County Deeds Records and including all of that 0.318 acres as described in Vol. \_\_\_, Page \_\_\_, and better described as follows:

Beginning at a railroad spike set in the center-line of County Highway No. 8 at a point marking the very Northeast corner of that 58.96 acre tract as described in Vol. 326, Page 51 and also marking the Northeast corner of that 0.318 acre triangular strip as described in Vol. \_\_\_, Page \_\_\_. *should be 49*

THENCE, with the center-line of said highway, N 66°-30' E, a distance of 203.0 feet to another railroad spike.

THENCE, S 22°-30' E, a distance of 534.0 feet to an iron rod passing an iron rod set at 30.0 feet.

THENCE, N 87°-42' W, a distance of 231.1 feet to an iron rod set at the Southwest corner of an old corner post. This point also marks a corner of that 58.96 acre tract as described in Volume 326, Page 51. *SHOULD BE 49*

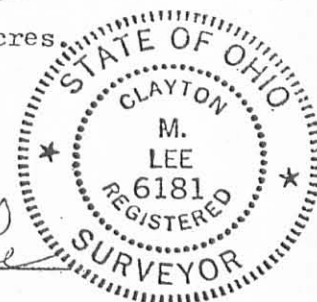
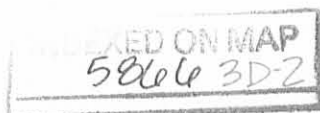
THENCE, along a fence, N 30°-01' W, a distance of 436.2 feet to a railroad spike in the center-line of County Highway No. 8, passing by the Northwest corner of a large square concrete post at 406.0 feet.

THENCE, with the center-line of Highway 8, N 66°-30' E, a distance of 63.9 feet to the point of beginning. Containing 2.614 acres.

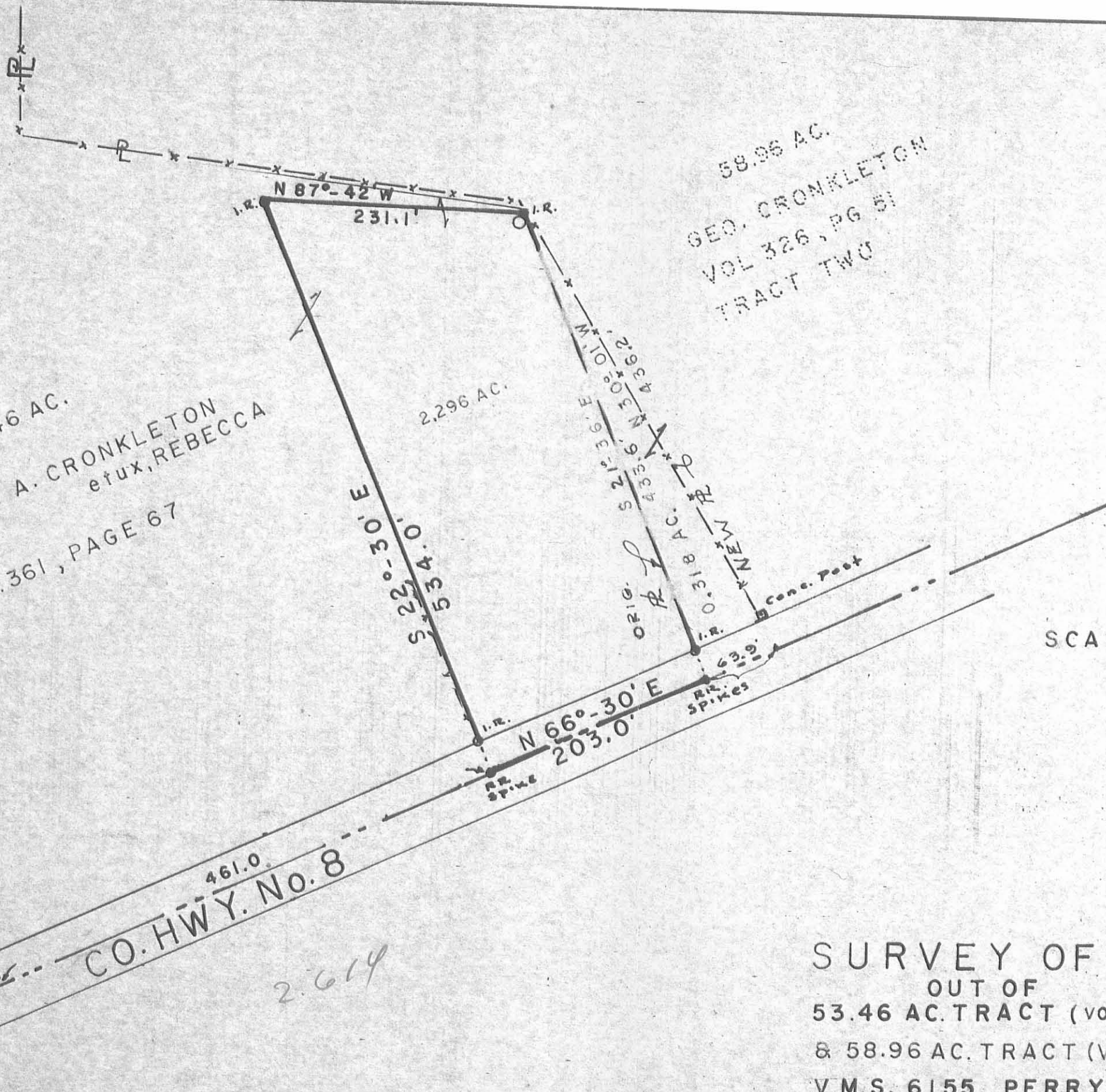
Next preceding deeds    Vol. 361, Page 67  
                                  Vol. 326, Page 51  
                                  Vol. \_\_\_, Page \_\_

Surveyed by Clayton M. Lee

Clayton M. Lee  
Ohio Reg. Surveyor 6181







53.46 AC.  
 CLIFFORD A. CRONKLETON  
 et ux, REBECCA  
 VOL. 361, PAGE 67

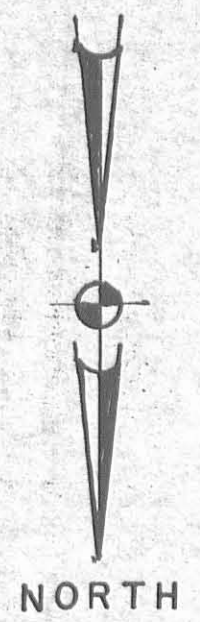
58.96 AC.  
 GEO. CRONKLETON  
 VOL. 326, PG. 51  
 TRACT TWO

GE WAUGH  
 11.627 AC.  
 VOL. 338  
 PG. 679

461.0  
 CO. HWY. No. 8

2.614

SCALE ~ 1" = 100'



SURVEY OF LOT (2.614 AC.)  
 OUT OF  
 53.46 AC. TRACT (VOL. 361, PG. 67)  
 & 58.96 AC. TRACT (VOL. 326, PG. 51)  
 V.M.S. 6155, PERRY TWP.  
 LOGAN CO., OHIO



SURVEYED BY Clayton M. Lee  
 Clayton M. Lee  
 Reg'd. Surv. 6181

INDEXED ON MAP

1-31-76