

OK E.C.P. Received 6-16-86  
**Lee Surveying and Mapping Co.**



Farm Surveys • Lot Surveys • Topography • Subdivisions • Construction Layout

855 EAST SANDUSKY AVENUE  
BELLEFONTAINE, OHIO 43311

(513) 593-5780

CLAYTON M. LEE, P.S.  
JEFFREY I. LEE, P.S.

EVANS TO STEVENSON

Lying in V.M.S. 4815, Perry Township, Logan County and Liberty Township, Union County, Ohio.

Being partially out of that Evans 33 acres as deeded and described in Volume 394, Page 534, Parcel II, Logan County and Volume 285, Page 325, Union County, Parcel II, and partially out of that Evans 70 acres as deeded and described in Volume 394, Page 534, Parcel IV, Logan County and Volume 285, Page 325, Union County. Being more particularly described as follows:

Beginning at a railroad spike set on the centerline of County Road 2, marking the west line of V.M.S. 4815 and being on the west line of the Evans said 33 acres.

THENCE, with the said center-line of County Road 2 and continuing onto the center-line of Union County Road 248, N 61°-30' E, a distance of 899.79 feet to a railroad spike found on the east line of the Evans 33 acre tract, passing the county line at a found  $\frac{1}{2}$ " iron rod at 79.05 feet.

THENCE, with the east line of said 33 acres, S 11°-54'-30" W, a distance of 1579.95 feet to a  $\frac{5}{8}$ " iron rod set at a fence corner on the north line of the Evans said 70 acre tract.

THENCE, with the said north line, S 77°-36' E, a distance of 657.84 feet to a  $\frac{5}{8}$ " iron rod set at the northeast corner of said 70 acre tract.

THENCE, with the east line of said 70 acre tract, S 10°-53' W, a distance of 906.36 feet to a  $\frac{5}{8}$ " iron rod.

THENCE, through the northeast part of said 70 acres, following closely to the southwest side of a wooded area, the following 4 bearings and distances:

N 76°-51'-30" W, 137.50 feet to a  $\frac{5}{8}$ " iron rod (Set).

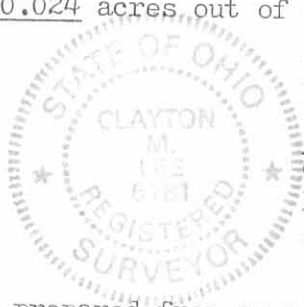
N 14°-40'-10" W, 265.68 feet to a  $\frac{5}{8}$ " iron rod (Set).

N 76°-04'-50" W, 446.27 feet to a  $\frac{5}{8}$ " iron rod (Set).

N 3°-11' W, 682.32 feet to a  $\frac{5}{8}$ " iron rod set on the north line of said 70 acre tract.

THENCE, N 74°-38' W, a distance of 475.65 feet to the east line of Evans 40 acre tract (Volume 394, Page 534, Parcel I).

THENCE, with said east line, N 11°-41' E, a distance of 965.14 feet to the point of beginning. Containing 32.987 acres, of which 2.33 acres are in Perry Township, Logan County and 30.657 acres are in Liberty Township, Union County. 20.024 acres out of Parcel II and 12.963 acres out of parcel IV.



Prepared by:

*Clayton M. Lee*

Clayton M. Lee

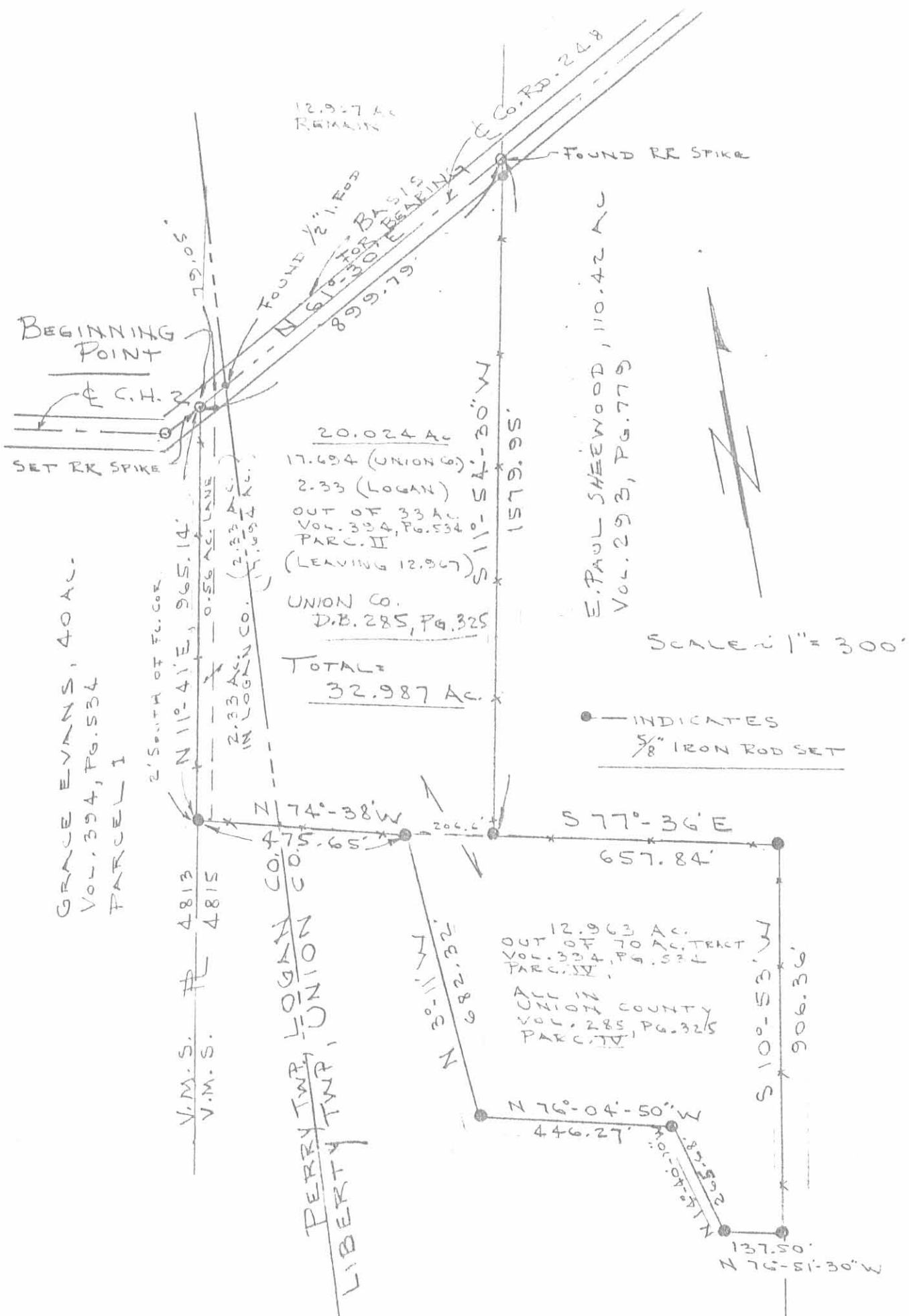
Registered Professional Surveyor No. 6181  
June 13, 1986

This description prepared from an actual field survey.

ORIGINAL STAMP IN GREEN

INDEXED ON MAP

7550 ID



SURVEY OF 32.987 ACRES OUT OF THE EVANS LAND (30.657 IN LIBERTY TWP, UNION COUNTY & 2.33 AC. IN PERRY TWP, LOGAN COUNTY) V.M.S. 4815, UNION & LOGAN COUNTIES, OHIO

1.33 Miles of boundary

By: *Jeffrey I. Lee*  
 JEFFREY I. LEE  
 PROF. SURVEYOR 6359  
 JUNE 11, 1986



INDEXED ON MAP  
 7550 IP

ORIGINAL STAMP IN GREEN