

# Lee Surveying and Mapping Co.



Farm Surveys • Lot Surveys • Topography • Subdivisions • Construction Layout

855 EAST SANDUSKY AVENUE  
BELLEFONTAINE, OHIO 43311

(513) 593-5780

CLAYTON M. LEE, P.S.  
JEFFREY I. LEE, P.S.

## EVANS, 12.857 ACRES

Lying in V.M.S. 4815, both Liberty Township, Union County and Perry Township, Logan County, Ohio.

Being the north part of a 33 acre tract in the name of Evans (Logan County Volume 394, Page 534, Tract II and Union County Volume 285, Page 325, Tract II) and being more particularly described as follows:

Beginning at a railroad spike found on the center-line of Logan County Road 2, being on the west line of V.M.S. 4815 and on the west line of said 33 acre tract.

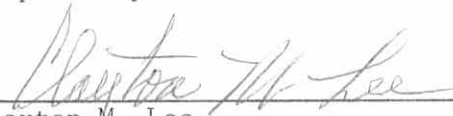
THENCE, with the west line of said 33 acres, the same being the west line of V.M.S. 4815, N 13°-59'-30" E, a distance of 1149.21 feet to a 5/8" iron rod set at the northwest corner of said 33 acre tract.

THENCE, with the north line of said 33 acres, S 77°-16'-15" E, a distance of 643.41 feet to a 5/8" iron rod found at the northeast corner of said 33 acres.

THENCE, with the east line of said 33 acres, S 11°-54'-30" W, a distance of 555.96 feet to a railroad spike found on the center-line of Union County Road 248.

THENCE, with said center-line, S 61°-30' W, a distance of 899.79 feet to the point of beginning. Containing 12.857 acres, of which 12.66 acres are in Liberty Township, Union County and 0.197 acre is in Perry Township, Logan County, Ohio.

Prepared by:

  
Clayton M. Lee  
Registered Professional Surveyor No. 6181  
September 2, 1986

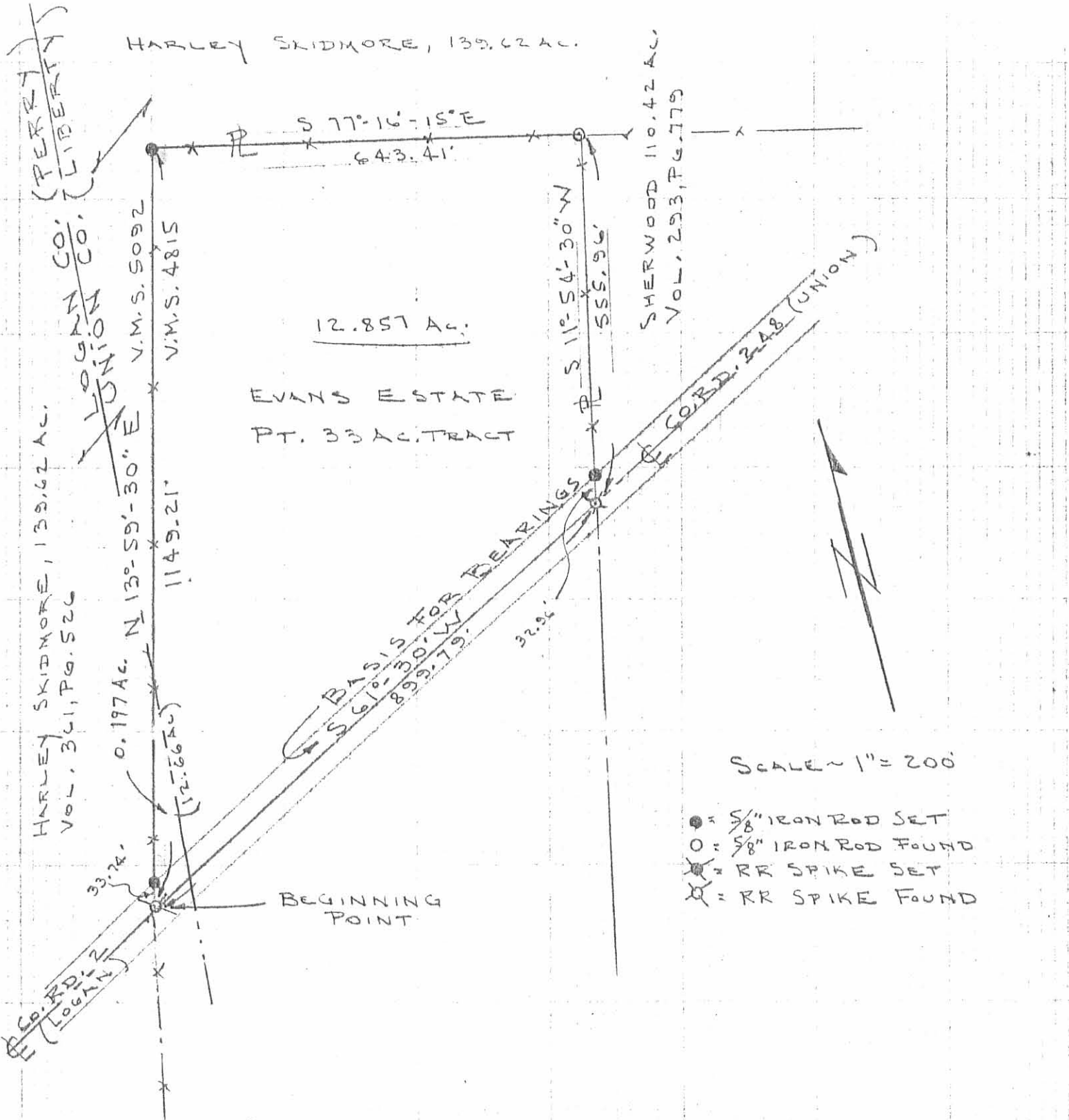
This description prepared from an actual field survey.

INDEXED ON MAP  
7556 1D



ORIGINAL STAMP IN GREEN

L-1419



SURVEY OF 12.857 ACRES OUT OF THE 33 AC.  
 EVANS LANDS UNION CO. VOL. 285, PG. 325 (TR. II)  
 & LOGAN CO. VOL. 394, PG. 534 (TR. II)  
 V.M.S. 4815 & ~~V.M.S. 5092~~  
 LIBERTY TWP. & PERRY TWP.  
 UNION CO. & LOGAN COUNTIES, OHIO

By: *[Signature]*  
 JEFFREY I. LEE  
 REG. SURVEYOR 6359



INDEXED ON MAP  
 7556: P