

Received 11-15-90



Lee Surveying and Mapping Co.



Farm Surveys • Lot Surveys • Topography • Subdivisions • Construction Layout

143 EAST COLUMBUS AVENUE
BELLEFONTAINE, OHIO 43311

(513) 593-7335

JEFFREY I. LEE, P.S.

SNYDER (14.973 ACRES)

Lying in V.M.S. 4689, Perry Township, Logan County, Ohio.

Being the Snyder, Etal 11.07 acre tract (14.973 acres by this survey) as deeded and described in O.R. 107, Page 997, Tracts two, three and four, of the Logan County Records of Deeds and being more particularly described as follows:

Beginning at a railroad spike set on the center-line of County Highway 152 and being S 22°-04'-47" W, a distance of 307.60 feet from a 1/2 inch iron rod found at the intersection of center-lines of County Highway 152 and Main Street extended from the Village of East Liberty.

THENCE, with the center-line of County Highway 152, S 22°-04'-47" W, a distance of 252.88 feet to a railroad spike set.

THENCE, with the northwesterly line of the Honda of America, Mfg., Inc. 7465.542 acre tract (O.R. 56, PG. 241), S 64°-16'-41" W, a distance of 879.99 feet to a 5/8 inch iron rod set on the center-line of County Highway 271.

THENCE, with the center-line of County Highway 271, N 30°-49'-02" W, a distance of 803.61 feet to a PK nail set on the south line of the David James 4.14 acre tract (O.R. 116, Pg. 295).

THENCE, with the south line of the said 4.14 acre tract on a curve to the left having a central angle of 4°-41'-52", a radius of 1933.91 feet, an arc length of 158.56 feet, the chord of which bears N 82°-11'-29" E, a distance of 158.52 feet to a 5/8 inch iron rod set.

THENCE, with the south line of the said 4.14 acre tract and the south line of the Church of Christ tract (Vol. 406, Pg. 696), N 79°-50'-42" E, a distance of 552.27 feet to a 5/8 inch iron rod set.

THENCE, S 37°-55'-13" E, a distance of 45.20 feet to a 5/8 inch iron rod set.

THENCE, N 79°-50'-47" E, a distance of 400.00 feet to a 5/8 inch iron rod set.

THENCE, with the westerly line of the Doris Kerns 0.500 acre tract, S 37°-55'-13" E, a distance of 288.59 feet to the point of beginning.

Containing 14.973 acres of which 0.707 acre is within the rights-of-way of the highways.

The basis for bearings is based upon the center-line of County Highway 152 being S 22°-04'-47" W, and all other bearings are from angles and distances measured in a field survey performed on November 13, 1990, by Lee Surveying and Mapping Company.

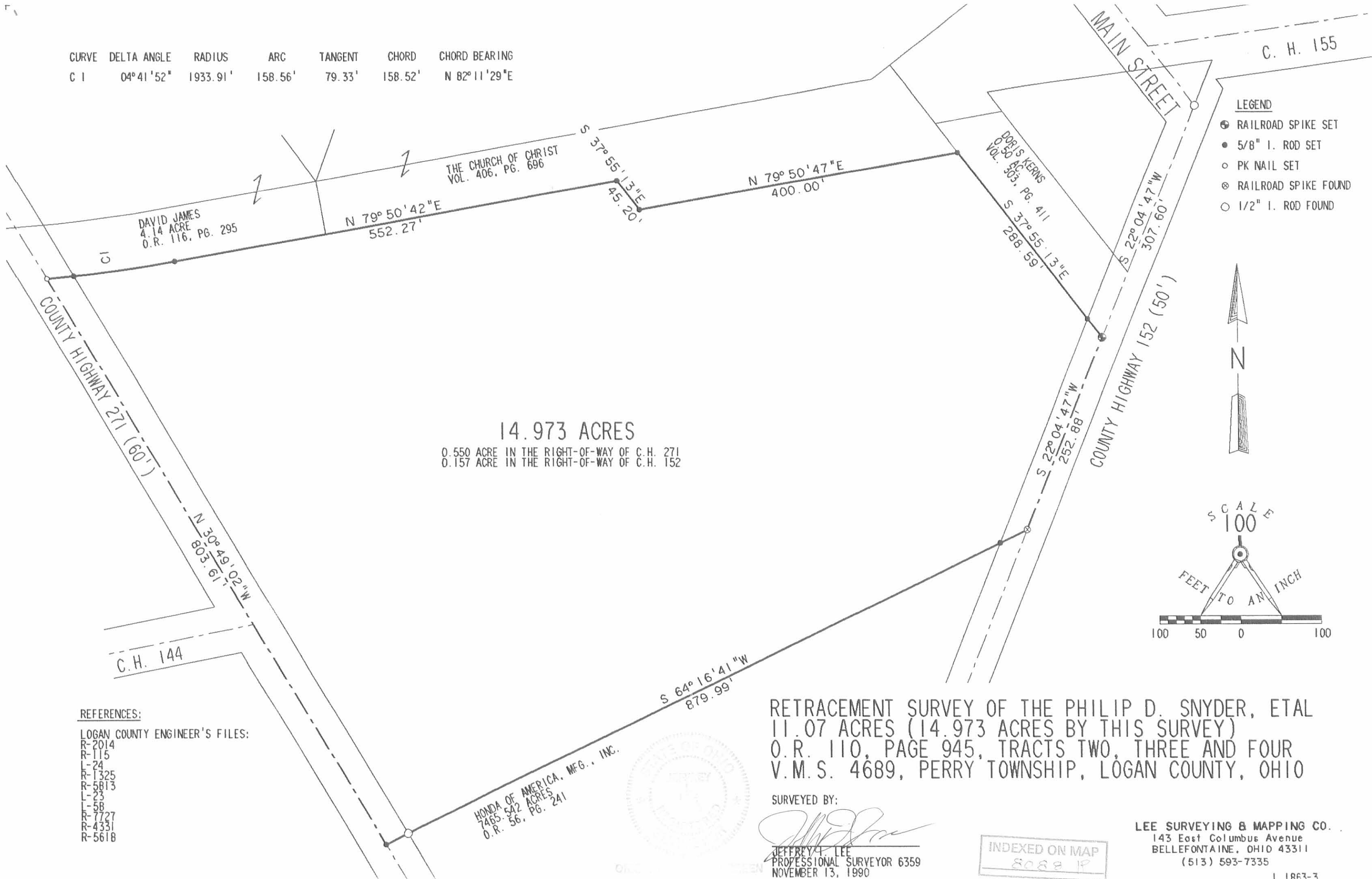
Description prepared by:

Jeffrey I. Lee
Professional Surveyor 6359
November 14, 1990

L-1863

INDEXED ON MAP
80881D

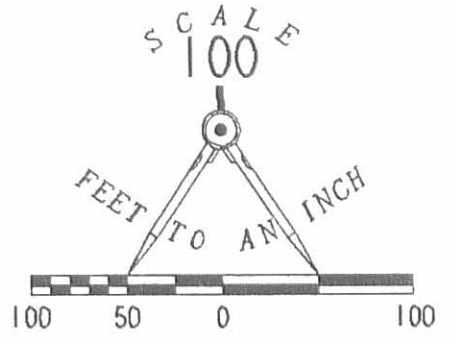
CURVE	DELTA ANGLE	RADIUS	ARC	TANGENT	CHORD	CHORD BEARING
C 1	04° 41' 52"	1933.91'	158.56'	79.33'	158.52'	N 82° 11' 29" E



14.973 ACRES

0.550 ACRE IN THE RIGHT-OF-WAY OF C.H. 271
 0.157 ACRE IN THE RIGHT-OF-WAY OF C.H. 152

- LEGEND**
- RAILROAD SPIKE SET
 - 5/8" I. ROD SET
 - PK NAIL SET
 - ⊗ RAILROAD SPIKE FOUND
 - 1/2" I. ROD FOUND



REFERENCES:

- LOGAN COUNTY ENGINEER'S FILES:
 R-2014
 R-115
 L-24
 R-1325
 R-5813
 L-23
 L-58
 R-7727
 R-4331
 R-5618

RETRACEMENT SURVEY OF THE PHILIP D. SNYDER, ETAL
 11.07 ACRES (14.973 ACRES BY THIS SURVEY)
 O.R. 110, PAGE 945, TRACTS TWO, THREE AND FOUR
 V.M.S. 4689, PERRY TOWNSHIP, LOGAN COUNTY, OHIO

SURVEYED BY:

Jeffrey T. Lee
 JEFFREY T. LEE
 PROFESSIONAL SURVEYOR 6359
 NOVEMBER 13, 1990



INDEXED ON MAP
 8088 IP

LEE SURVEYING & MAPPING CO.
 143 East Columbus Avenue
 BELLEFONTAINE, OHIO 43311
 (513) 593-7335