

Beginning at a beech and fallen sugar tree, the north east corner to John Williams land in the east line of Holland & Hancey's survey 3223 (here I marked 3 beeches, thence with said line $S 11^{\circ} W$ crossing a spring branch at 32 poles a drain at 42 poles, 164 poles to a beech sugar tree and fallen ash; thence $S 69^{\circ} W$ 83 poles to a beech lym and fallen sugar tree, north east corner to William Green's land

Thence with Green's line $S 69^{\circ} E$ crossing a drain 164 poles to a sugar tree and beech in the north line of Williams' land and $S 11^{\circ} W$ corner to Green - thence $S 69^{\circ} E$ 83 poles to the beginning containing 85 acres part of Hancey's said survey.



- I made the following

division (to wit) beginning at 2 beeches and sugar tree north of the east named ^{or beginning} corner $7 \frac{3}{4}$ poles; thence $S 69^{\circ} W$ 83 poles to a hickory, sugar tree, and water beech in the west line of this survey - thence with said line $S 21^{\circ} E$ $7 \frac{3}{4}$ poles to a sugar tree and beech $S. W.$ corner to the survey; thence $S 69^{\circ} E$ 83 poles to the beginning 8 acres

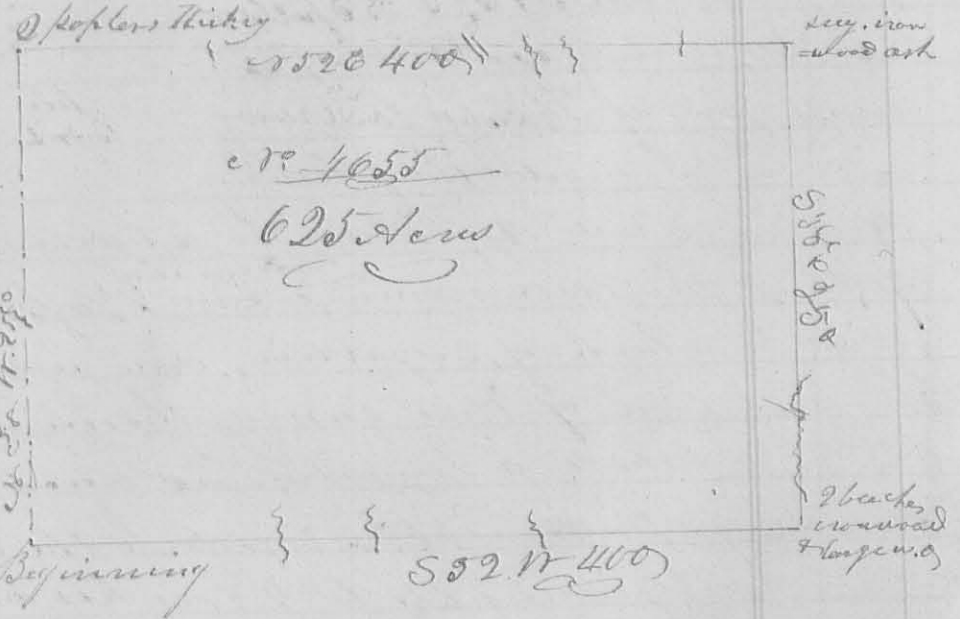
Thence beginning at the 2 beeches and sugar tree aforesaid in the east line; thence with said line $N 21^{\circ} W$ $7 \frac{3}{4}$ poles to a stake; thence $S 69^{\circ} W$ 42 $\frac{1}{2}$ poles to a stake; thence $S 21^{\circ} E$ 36 poles to a stake; thence $S 69^{\circ} W$ 41 poles to a small mulberry tree in the east line of Green's land, - leaving 5 acres in the north end of this survey - 10 102

David Warner }
 Samuel Warner } 66 J. W. Clarnon
 J. W. Clarnon }
 J. W. Clarnon }

Beginning at 2 beeches, westerly corner to Philip Langton's survey, no 3164, and $S. W.$ corner to Lemelling Jones' survey, no 4655

one of the beeches being dead I marked a sugar tree
 thence $r 38^{\circ} W 250$ poles, crossing Beaver Run a branch of
 Darby's Creek, at 117 poles, to 2 poplars and hickory north
 west corner to Jones's said Survey (one of poplars is
 broken off about 20 feet high) - thence $r 52^{\circ} E 400$
 poles, crossing a branch at 103 poles, one at 166, the road
 from Jamesfield to Garwood's Hill at 236, a branch at
 263, one at 268, and one at 384 poles, to a sugar tree
 ironwood and ash, and found them 3 poles to the left hand
 (thence the present bearing of this line is $r 52^{\circ} 42' E$ - thence
 $S 38^{\circ} 25' W$ poles, crossing the branch from Levi Garwood's
 Spring at 174, and the road from Jamesfield to Garwood's
 mile and said branch at 188 poles, crossing again several

times, but
 finding no cor-
 ner as called for
 by Jones and bloy
 Levi survey, I
 marked 2 beeches
 ironwood and
 large white oak
 thence $S 52^{\circ} W$
 400 poles, crossing a
 branch at 138, one
 at 224, one at 272



poles to the beginning containing 625 acres, being Levi
 Jones's Survey entire, on the waters of Darby's Creek;
 Carlisle Austin }
 Macy Smith }
 J. McWhirmon

5th mo. May 17th 1828 Survey No 104
 Surveyed a lot for Ebenezer Jones
 Beginning at a stake on the east side of the Sandusky road $r 15^{\circ} E$
 70 feet from the north west corner of lot no 7 in Jamesfield
 thence $r 15^{\circ} E$ 70 feet to a stake on the east side of said road
 thence $r 73^{\circ} E$ 160 feet to a stake, thence $S 5^{\circ} W$ 70 feet to a stake
 thence $r 73^{\circ} W$ 160 feet to the beginning containing 1200 approx.
 Levi Austin }
 Daniel Austin }
 J. McWhirmon

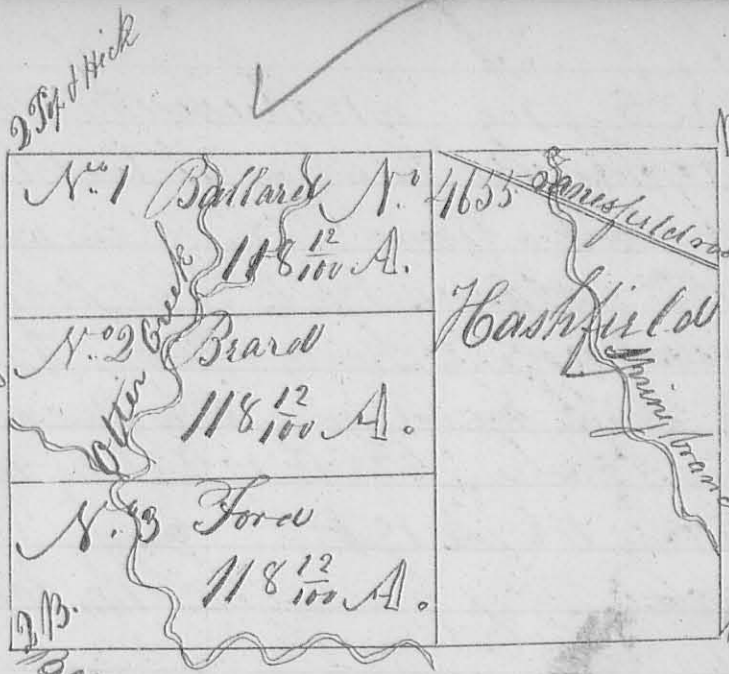
8 mo (Aug^t) 26 - 1842
 Surveyed for George M^cColloch Jr 38¹⁵/₁₀₀
 acres of land being part of Survey N^o 3439 on
 the waters of Mack river land bounded and
 described as follows: - Beginning at a Beech
 (down) in the north line of Survey N^o 5738 corner
 to Tho^s Rambo; thence with said line N 81¹/₂ E
 93¹/₂ poles, crossing a branch, to an Ash &
 dogwood corner to Oliver Browning land;
 thence with his west line N 8¹/₂ W 86¹/₂ poles
 crossing a branch, to a Poplar & Ash in Robert
 M^cColloch's south line corner to Oliver Browning;
 thence with said line S 81¹/₂ W 55 poles, crossing a
 branch at 10 poles, to a stone in the Garwood
 road S. W. cor. to M^cColloch and N. corner to
 Tho^s Rambo's land; thence with a line of
 said Rambo's land S 4¹/₂ W 46 poles, to a stake
 and Poplar stump cor. to said Rambo; thence
 with another of his lines S 37¹/₂ W 32 poles, to
 a stake cor. to said Rambo; thence with another
 of his lines S 3¹/₂ W 20 poles to the beginning
 John McColloch C. S. L. Co

1st mo Jan^y 12 - 13 - 1843
 Surveyed for Ballard and Ford 590⁵⁹/₁₀₀ acres of
 land being part of Survey N^o 4665 as represented
 by the annexed Plat: - Beginning at 2 Beech
 westerly corner to Survey N^o 3864; thence N 38¹/₂ W 255¹/₄
 Poles crossing a branch to 2 Poplars (one dead) and a
 Hickory corner to Witteratt and Lewis; thence N 52¹/₂ E
 370 Poles crossing 3 branches and the Jamesfield and
 East Liberty road, to a beech and 2 small sugar trees
 corner to 50 acres sold to Levi Garwood; thence with
 his west line S 38¹/₂ E 255¹/₄ Poles crossing the
 Jamesfield road and a small branch, to a beech
 and 2 small sugar trees corner to Garwood; thence
 S 52¹/₂ E 370 Poles crossing Otter Creek several times to the beginning

N^o 501

8223

Garrett Peering's 13th in
three remaining aboriginal
copies thereof, N 55 E



Washfield Said Off for Washfield 235 1/4 acres: - Beg. at a Beech and 2 small sug. corner to Levi Garwood: thence S 52° W 148 Poles crossing a branch and the Jamesfield road to a Stone Elm and Beech: thence S 38° E 255 3/4 Poles crossing Otter Creek to a Stone and 2 Dogwood: thence N 52° E 148 Poles to a Beech & 2 small sugar Cor. to Garwood: thence with his line N 38° W 255 3/4 Poles crossing a small branch and the Jamesfield road to the beginning: -

Ballard Also Said Off 3 other lots as represented in the Annexed Plat: Lot N^o 1 Beg. at a Stone Elm & Beech Cor. to Washfield: thence S 52° W 222 Poles, to a Stone 2 Poplar (One dead) and Hickory, Northwestly corner, to Survey: thence S 38° E 85 1/100 Poles, to 3 Beech: - thence N 52° E 222 Poles crossing a branch, to a Stake in a field: thence N 38° W 85 1/100 Poles to the Beginning. - Containing 118 A. 19 P.

Beard Lot N^o 2. Beg. at the Southeastly corner of lot N^o 1: - thence with a line of said lot S 52° W 222 poles crossing a Branch, to 3 Beech: thence S 38° E 85 1/100 poles crossing a branch to 2 Poplar and small Beech: thence N 52° E 222 poles crossing a branch, to a Stake: thence N 38° W 85 1/100 poles, to the Beginning - Containing 118 A 19 P.

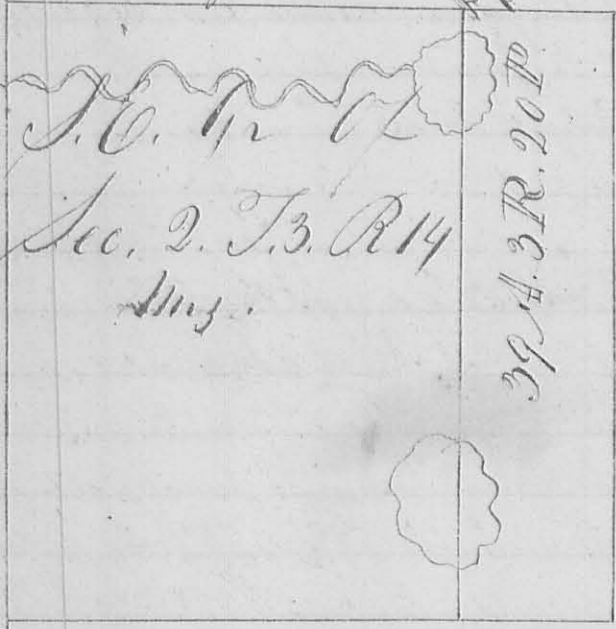
3rd Lot N^o 3. Beg. at the Southeastly corner of lot
 N^o 2 :- thence with a line of said lot, S 52° 10' 22 1/2
 poles crossing a branch to 2 Poplar and Small Beech cor.
 to said lot ; thence S 38° E 85 ¹³/₁₀₀ Poles, to 2 Beech
 Southwestly cor. to Survey ; thence N 52° E 222 Poles cross-
 ing Old Creek several times, to a Stone and 2 dogwood and
 Ironwood ; thence N 38° W 85 ¹³/₁₀₀ Poles, to the Beginning
 Containing 118 A 19 P.

J. Hatcher 3/6
 Saml. Emery 3/6

John Michener
 Surveyor of Logan County

Surveyed 1st mo. July. 28th 1843
 Surveyed for Thomas Tracy a part of the
 N^o 302 S. E. 1/4 of Sec. 2. T. 3. R. 14
 Beg. at a Stone marked + S. E. Cor. to the section

(2486)



thence running with East line
 thence N 2° E 159 1/2 Poles, to a
 Grey lick & S. D. 277 to 26 links,
 white cl. & S. D. 110 to 44 links ;
 thence N 88° W 40 poles, to a
 Stake from which a small Bent
 walnut bears S 23° E 25 links ;
 thence S 2° W 159 1/2 poles crossing
 two ponds, to a Stake from
 which a white Oak bears
 diam. bears N 84° W 32
 links ; thence S 88° E

40 poles, to the Beginning. Containing 39. 3. 20.
 Or 39 ⁸⁵/₁₀₀ Acres
 John Michener Surveyor of Logan Co.

328

Survey No. 781

8223

Magnetic Meridian

John McCall's

Block line $N. 53^{\circ} \frac{3}{4} W. 138^{\circ} \frac{1}{10}$ Poles

Beginning

Part of Vir. Mil. Sur.
No. 4655
Perry Tp.

B. & C. S. Co. Road

Stone & small sugar

John Garwood's land

255 Poles

Charles H. Thornton
 $239^{\frac{26}{100}}$ Acres

Stone quarry

George Vernon's land
McFairy heirs

$S. 36^{\circ} E. 171^{\frac{3}{8}}$ Poles

$N. 57^{\circ} W.$

Asher's heirs

$N. 53^{\circ} 25' E. 150^{\circ}$ Poles

Block line & $S. 70^{\circ} E.$ Road

Scale
40 Poles or
16 chains or
640 feet

Surveyor's Office, Bellefontaine, O.
Nov. 11th A. D. 1858

The above plat is a representation of
 $239^{\frac{26}{100}}$ Acres of land, being a part of
Virginia Military Survey No. 4655, in the name
of the Representatives of Leuelling Jones, and
and in Perry Township of Logan County Ohio.

399
As surveyed by me, Th. C. Moore, the
County Surveyor of said County of Logan,
on the 28th & 29 days of October A. D. 1858,
at the Request of John Wickersham, of
Boker Creek Township of sd. County of Logan
for the purpose of establishing the lines,
and corners thereof, and ascertaining the
number of Acres contained therein; which
I did in the following manner; to wit;

Beginning, at a Stone in the North
line of said Survey, and at the S. W.
corner of John Gorwood's land, (in the
same survey) from which a Sugar tree 6. In
Dir. bears S. 58° E. two links distant,
run thence with the North line of said
Survey, at 5³/₄ M. 138⁷/₁₀ Poles, crossing a
branch at 9³/₄ Poles, & a Spring branch at
109 Poles, to a stone at the North
side of a road leading from Hanesfield
to East Liberty, from which a lime
stone bears N. 60° W. 11 links. Thence S. 60° E.
10²/₁₀ Poles, crossing said road, (at very acute
angles,) to a Rock Stone, near the South
side of said road, from which a
Walnut tree 12 In. Dir. bears N. 54¹/₄ W.
33 links; Thence S. 34¹/₄ W. 15⁷/₁₀ poles to
a Rock stone, from which a Beech
22 In. Dir. bears S. 13¹/₂ E. 8 links; Thence
S. 57° W. two poles to a Rock Stone from
which said Beech 22 In. Dir. bears S. 67¹/₂ E.
47 links; Thence S. 37° E., with the East
line of John McCalley's land 70²/₁₀ Poles
to a rock stone, from which a Walnut
tree 6 In. Dir. bears S. 81¹/₂ W. 64 links,
Thence N. 52° E. two Poles to a stone,
Thence at 36¹/₂ E., with the East line of the lands

owned by John Mc Lain's heirs, and George Vernon, 171³/₁₀ Poles, (passing the corner betw said ~~said~~ heirs & Vernon. at 86 poles) to a Stone in the angle of a road, at said Vernons S. W. corner, and in the south line of said Survey, from which a Bee 18¹/₂ Dir. bears S. 4° E. 26 links; Thence with said Road & south line of survey, N 5³/₈ E. 25⁷/₁₀ Poles, (crossing a branch at 44⁵/₁₀ poles, and passing a stone at the corner between Austins heirs at 64⁵/₁₀ poles to a stone in said Road, & Survey line at the Widow Howes S. W. corner, from which a stone bears N. 37° W. 50 links, Thence N. 37° W. with the west line of said Widow Howe, and John Garwoods Land, 255 poles, (crossing said Road leading from Hanesfield to East Liberty at 105 poles,) to the place of beginning

Containing Two Hundred & Thirty nine Acres, and twenty six hundredths of an acre = (239²⁶/₁₀₀ acres)

All the afore named witness trees are marked thus, 'X' cut in the side facing the corner

Charles H. Thornton }
 Job Wickersham } Co. by mutual agreement

I hereby certify that the foregoing plat and Report are correct

Henry C. Moore, County Surv.
 of Logan County Ohio