

OK JLB 1-3-02

# Lee Surveying and Mapping Co., Inc.

Land Surveys • Topography • Subdivisions • Construction Layout

117 N. Madriver St.  
Bellefontaine OH 43311



Phone: (937) 593-7335  
Fax: (937) 593-7444

## MOFFETT 12.799 ACRES

Lying in Virginia Military Survey 4810, Perry Township, Logan County, Ohio.

Being out of the Barry Moffett original 113 acre tract and as deeded and described in Official Record 573, Page 852 of the Logan County Records of Deeds and being more particularly described as follows:

Beginning at a 5/8 inch iron rod found on the center-line of County Highway 10 at P.I. Station 72+78.23 (O.D.O.T. S.H. 714 Section A, right-of-way plans).

THENCE, with the centerline of County Highway 10 (60 feet wide), N 70°-49'-00" E, a distance of 360.16 feet to a MAG nail set at the TRUE POINT OF BEGINNING.

THENCE, with the centerline of County Highway 10, N 70°-49'-00" E, a distance of 1024.32 feet to a MAG nail set.

THENCE, with the west line of the George Nelson Baxley and Deborah A. Baxley 3.51 acre tract (O.R. 58, pg. 205, Tract I), S 32°-13'-12" E, a distance of 434.93 feet to a 5/8 inch iron rod set, passing a 5/8 inch iron rod set at 30.79 feet.

THENCE, S 78°-23'-20" W, a distance of 470.92 feet to a 5/8 inch iron rod set.

THENCE, S 25°-49'-57" W, a distance of 295.94 feet to a 5/8 inch iron rod set.

THENCE, S 14°-07'-48" E, a distance of 150.38 feet to a 5/8 inch iron rod set.

THENCE, S 45°-28'-34" W, a distance of 127.65 feet to a 5/8 inch iron rod set.

THENCE, S 58°-58'-32" W, a distance of 192.72 feet to a 5/8 inch iron rod set.

THENCE, N 28°-11'-00" W, a distance of 825.00 feet to the point of beginning, passing a 5/8 inch iron rod set at 794.47 feet.

Containing 12.799 acres, of which 0.706 acre is within the highway right-of-way.

The basis for bearings is the centerline of County Highway 10, being N 70°-49'-00" E, and all other bearings are from angles and distances measured in a field survey by Lee Surveying and Mapping Co., Inc. on December 11, 2002.

Description prepared by:

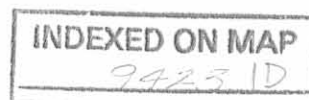
A handwritten signature in black ink, appearing to read 'Jeffrey I. Lee'.

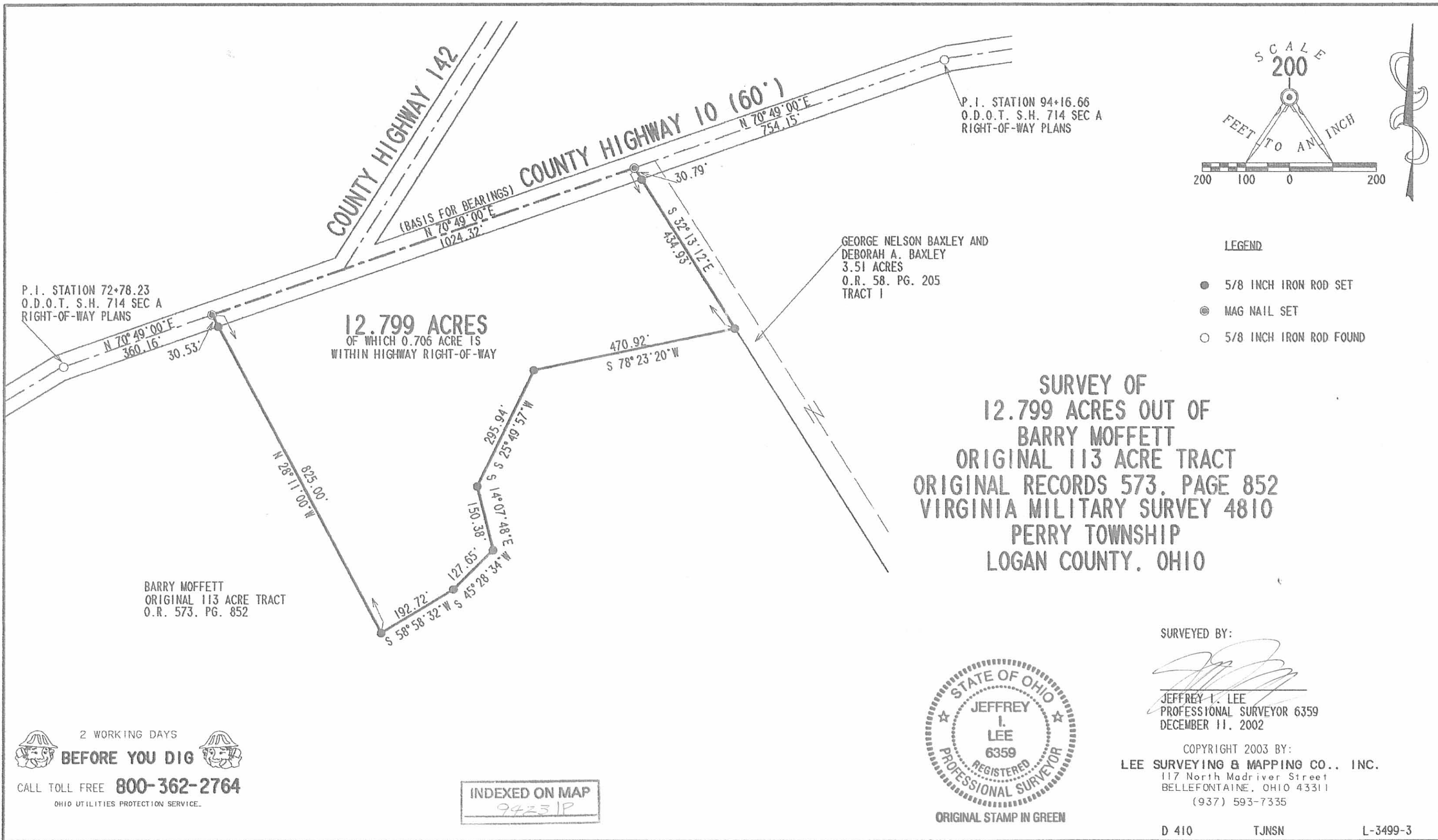
Jeffrey I. Lee  
Professional Surveyor 6359  
December 30, 2002



L-3499

ORIGINAL STAMP IN GREEN





2 WORKING DAYS  
**BEFORE YOU DIG**

CALL TOLL FREE **800-362-2764**  
OHIO UTILITIES PROTECTION SERVICE.

**INDEXED ON MAP**  
94231P

**STATE OF OHIO**  
JEFFREY I. LEE  
6359  
REGISTERED  
PROFESSIONAL SURVEYOR

**ORIGINAL STAMP IN GREEN**

**SURVEYED BY:**  
*Jeffrey I. Lee*  
JEFFREY I. LEE  
PROFESSIONAL SURVEYOR 6359  
DECEMBER 11, 2002

**COPYRIGHT 2003 BY:**  
**LEE SURVEYING & MAPPING CO., INC.**  
117 North Madriver Street  
BELLEFONTAINE, OHIO 43311  
(937) 593-7335

D 410 TJNSN L-3499-3