

1 RECD 2-24-04 SUM OK

Lee Surveying and Mapping Co., Inc.

Land Surveys • Topography • Subdivisions • Construction Layout

117 N. Madriver St.
Bellefontaine OH 43311



Phone: (937) 593-7335
Fax: (937) 593-7444

WOLEVER 4.000 ACRES

Lying in Virginia Military Survey 4689, Village of East Liberty, Perry Township, Logan County, Ohio.

Being out of the Vilda Wolever original 5.00 acre tract as deeded and described in Official Record 96, Page 102, Tract I, of the Logan County Records of Deeds and being more particularly described as follows:

Beginning at a railroad spike found at the intersection of center-lines of County Highway 10 (60 feet wide) and Township Road 145 (40 feet wide).

THENCE, with the center-line of County Highway 10, S 77°-39'-08"E, a distance of 86.03 feet to a 1/2 inch iron rod found in a monument box.

THENCE, with the center-line of Temperance Street (60 feet wide), S 34°-29'-38"E, a distance of 256.49 feet to a railroad spike found.

THENCE, with the northwestern lines of the Robin E. Mosley, 0.70 acre tract (O.R. 199, Pg. 409) and Dean W. Moore and Penny M. Moore, 4.994 acre tract (O.R. 611, Pg. 119), S 54°-56'-00"W, a distance of 545.51 feet to a 5/8 inch iron rod set, passing a 5/8 inch iron rod set at 30.00 feet.

THENCE, N 34°-04'-59"W, a distance of 328.18 feet to a MAG nail set, passing a 5/8 inch iron rod set at 308.18 feet.

THENCE, with the north Village line and the center-line of Township Road 145, N 55°-55'-01"E, a distance of 484.30 feet to the point of beginning.

Containing 4.000 acres of which 0.445 acre is within the highway right-of-way.

The basis for bearings is the northwest line of the Dean W. Moore, 4.994 acre tract, being S 54°-56'-00"W, and all other bearings are from angles and distances measured in a field survey by Lee Surveying and Mapping Co., Inc. on February 19, 2004.

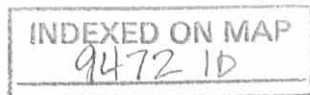
Description prepared by:

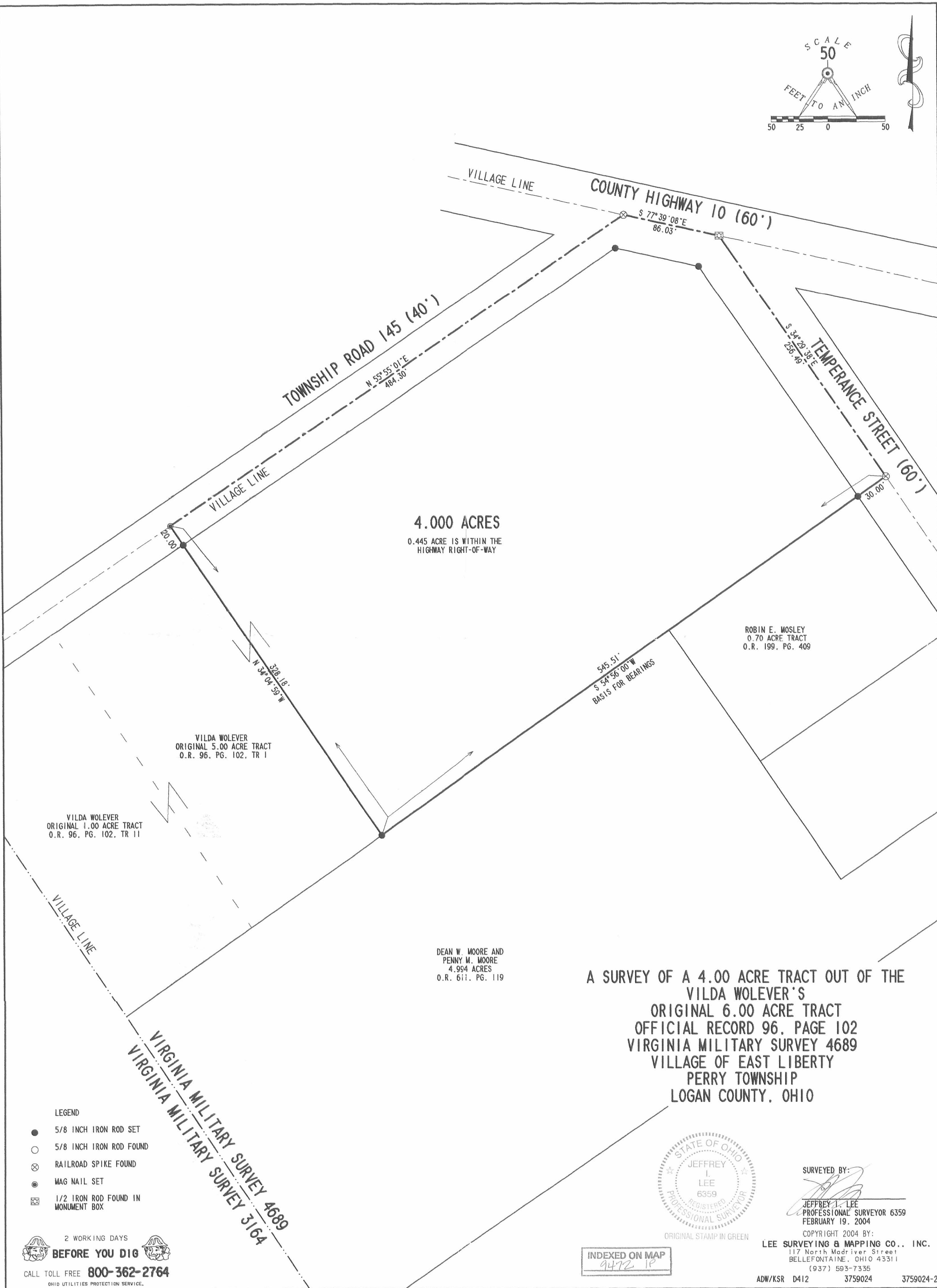
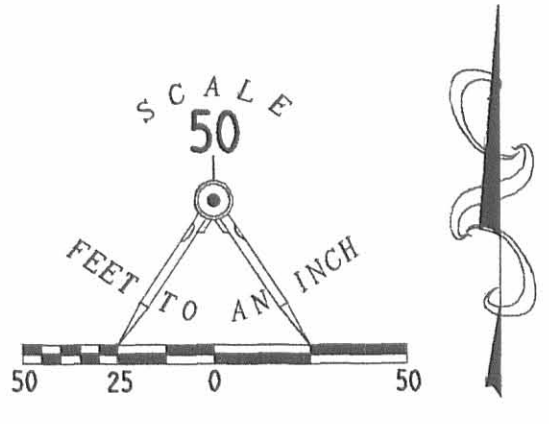


ORIGINAL STAMP IN GREEN

A handwritten signature in black ink, appearing to read 'J. Lee'.
Jeffrey I. Lee
Professional Surveyor 6359
February 20, 2004

3759024





**A SURVEY OF A 4.00 ACRE TRACT OUT OF THE
VILDA WOLEVER'S
ORIGINAL 6.00 ACRE TRACT
OFFICIAL RECORD 96, PAGE 102
VIRGINIA MILITARY SURVEY 4689
VILLAGE OF EAST LIBERTY
PERRY TOWNSHIP
LOGAN COUNTY, OHIO**



SURVEYED BY:
Jeffrey I. Lee
JEFFREY I. LEE
PROFESSIONAL SURVEYOR 6359
FEBRUARY 19, 2004

COPYRIGHT 2004 BY:
LEE SURVEYING & MAPPING CO., INC.
117 North Madriver Street
BELLEFONTAINE, OHIO 43311
(937) 593-7335
ADW/KSR D412 3759024 3759024-2

INDEXED ON MAP
9472 1P