

FB 712

Resurvey T.R. 148
Perry Twp.
Logan Co., Ohio

0+00 - P.I. - Fd. $\frac{1}{2}$ " dia. iron -
Intersection E.C.R. 144 w/
E.T.R. 148 - Ref: F.B.K. # 561,
pg. 29. E R/W plan X-148

0+50.00 - P.O.T. - Set mag nail

INDEXED ON MAP
9654

At 65.66 - P.C. - Set mag nail

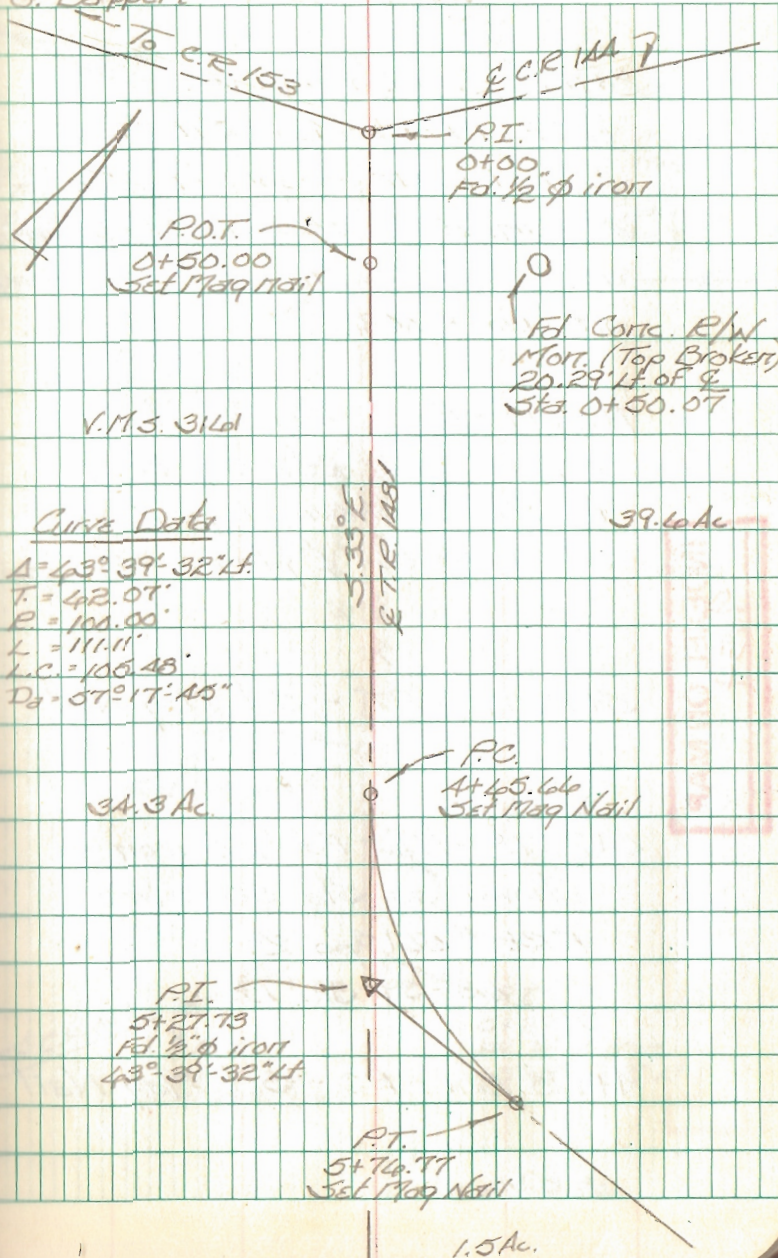
5+27.73 - P.I. - Fd. $\frac{1}{2}$ " dia. iron
shown as Sta. 5+28 in F.B.K. #
561, pg. 29
43°-39'-32" Lt.

5+76.77 - P.I. - Set mag nail

C. Dill
B. Simmons
G. Dappert

4 August 04

21



FB 712

RESURVEY T.R. 148
Perry Twp.
Logan Co., Ohio

8+11.27 - End of T.R. 148 -
(Ref: Plan X-148) - Set $\frac{5}{8}$ " dia.
capped rebar on split of R/W
monument bases found: - shown
as Sta. 8+25 (tangent stationing)
on plan X-148.

7+67.19 - P.O.T. - Set $\frac{5}{8}$ " dia.
capped rebar 252.50' from
the P.I. as shown on page 29
of F.B.K. # 561 & plan X-148.

5+76.77 - P.T. - Set Mag Nail

5+27.73 - P.I. - Fd. $\frac{1}{2}$ " ϕ iron -
shown as Sta. 5+28 in
F.B.K. # 561, pg. 29
 $43^{\circ}-39'-32''$ Lt.

At 45.666 - P.C. - Set Mag Nail

C. Dill
B. Simmons
G. Dappert

4 August 04

22

