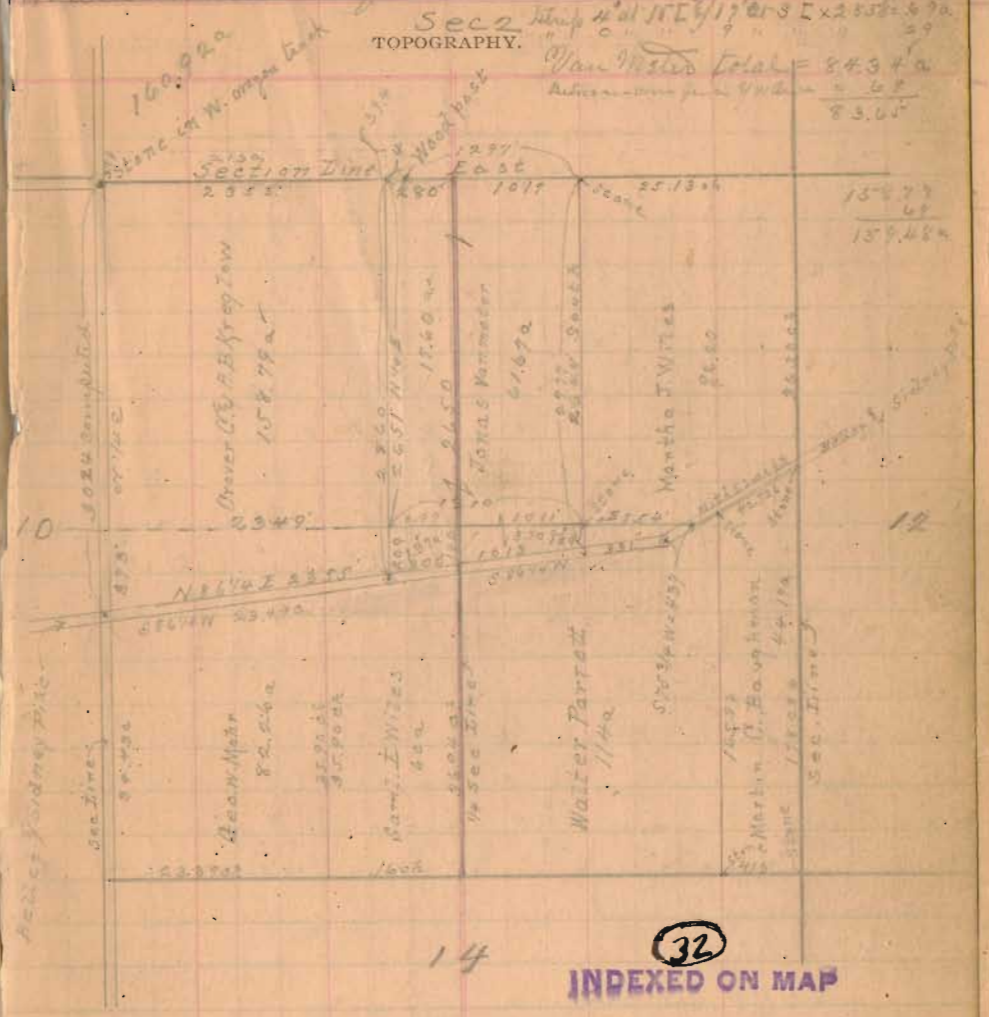


Van Meter Survey May 5th 1916
 Part of Sec 11 Town 1 Range 6

Pleasant Township.
 STATION. ALIGNMENT. DEFLECTION. REMARKS

- Course road 90° line Sec 11 - N 74° E
 " pike from 597 & Kuglow land N 86 1/4° E
 (1) Start at stone NW 1/4 Sec 11 = 597 & Kuglow
 S 1/4 N. 3/4 E. 2 1/2 E of 597 & Sec 11
 set iron pin in center of granite pike 9/11 line Sec 11.
 (2) Start at iron pin in NW line Sec 11 = 597 & Kuglow
 thence on the pike N 86 1/4° E
 at 2355' set 597 & Van Meter 5/22 & Kuglow
 2572' center old rail fence post called land line
 (3) Start 34' R. E. of 2355' of (2). Correct course N 74° E
 Thence N 74° E. at 246' pike 1/4 sec line
 at 2860' strike 30' R. E. of 2 post mine fence
 (4) start at stone NW 1/4 Sec 11 & NW 1/4 Kuglow. Measure E.
 at 2357' wood post on fence S. 78 1/2° E
 " 2353' post N 32° Kuglow. 5/27 & Van Meter
 (5) Start at wood post 2357' of (4) & 2860' of (3)
 thence on the fence 9. N line Sec 11 correct course East
 N 89 3/4° E. at 1293' stone at wood post on fence S. E 7/11.
 and in stone Sec 11 N 22° Van Meter
 (6) Start 25' R. W. of stone 1293' of (5)
 thence parallel to fence S. line Van Meter 5/11 line 1/4 sec
 S 1/4 N. at 2444' set to S. 25' to stone 1/4 sec
 at 2449' stone at 1/4 sec corner. at 2777' end pike S. E. & Van Meter
 (7) Start at 2777' of (6) thence on the pike 9/11 line Van Meter
 at 1018' stone fence 1/4 sec line South
 at 1296' end of fence N. 74° line Van Meter. at 1313' 2355' of (2)

Dec 11, T. 1. R. 8, Pleasant Township
 Measurements in feet.



- (8) Start at stone in Sec 11 Van Meter 5/11 line NW 1/4 Sec 11
 thence on the 1/4 sec line East 754' 1/4 post on S. side pike
 1/4 sec line 9/11
 (9) Start at 754' of (8) thence on the S. side of said pike
 S 75 1/4° W. at 437' post 4 1/2 sec on S. side pike
 (10) Start at 437' of (9) thence on the S. side of said pike
 S 86 1/4° N. at 60' center pike at 331' end pike 9/22 7/11 of (6)