

Rec'd 2-22-2008 SMY OK ✓  
**Lee Surveying and Mapping Co., Inc.**

Land Surveys • Topography • Subdivisions • Construction Layout

117 N. Madriver St.  
Bellefontaine OH 43311



Phone: (937) 593-7335  
Fax: (937) 593-7444

**BARGA  
136.523 ACRES  
TRACT A**

Lying in Section 12, Town 1, Range 8, Pleasant Township, Logan County, Ohio.

Being out of the Charles E. Barga, Trustee original 150.0 acre tract as deeded and described in Official Record 197, Page 85, Tract I of the Logan County Records of Deeds and being more particularly described as follows:

Beginning at a 15 inch square concrete corner post found on the southwest corners of Section 12 and the Huber Rohrer, Trustee under the Rohrer Revocable Living Trust Agreement, original 64.66 acre tract (O.R. 206, Pg. 117, Tract 2).

THENCE, with the south lines of Section 12 and the said 64.66 acre tract, N 87°-00'-00" E, a distance of 1022.99 feet to a 15 inch square concrete corner post found.

THENCE, with the east line of the said 64.66 acre tract, N 3°-08'-55" W, a distance of 178.78 feet to a 5/8 inch iron rod set at the TRUE POINT OF BEGINNING.

THENCE, with the east line of the said 64.66 acre tract, N 3°-08'-55" W, a distance of 2272.29 feet to a 15 inch square concrete corner post found.

THENCE, with the south lines of the Huber Rohrer, Trustee under the Rohrer Revocable Living Trust Agreement, original 40.0 acre tract (O.R. 206, Pg. 117, Parcel 2) and the Robert Ray Downing original 20.0 acre and 5.54 acre tracts (Vol. 302, Pg. 9), N 86°-51'-58" E, a distance of 2155.23 feet to a point on the west edge of water of the Great Miami River, passing a 5/8 inch iron rod set at 1714.91, a railroad spike set on the center-line of Township Road 229 at 1784.93, a 5/8 inch iron rod set at 1855.08, and a 5/8 inch iron rod set at 2121.63 feet.

THENCE, with the west edge of water of the Great Miami River, the following twenty-four (24) courses:

S 07°-18'-34" W, a distance of 138.62 feet to a point.

S 07°-59'-08" E, a distance of 60.64 feet to a point.

S 31°-14'-56" E, a distance of 125.25 feet to a point.

S 39°-00'-04" E, a distance of 229.47 feet to a point.

S 50°-01'-30" E, a distance of 76.55 feet to a point.

S 71°-56'-46" E, a distance of 27.21 feet to a point.

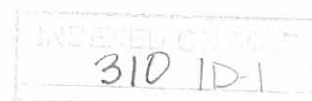
S 42°-00'-47" E, a distance of 107.24 feet to a point referenced by a 1 inch iron rod found on center-line station 94 + 48.2 (Logan County Engineers' Field Book 707, page 67),  
S 27°-29'-35" W, a distance of 58.00 feet.

S 27°-39'-51" E, a distance of 89.37 feet to a point.

S 20°-59'-54" E, a distance of 110.09 feet to a point.

S 16°-01'-30" E, a distance of 79.17 feet to a point.

S 14°-00'-34" W, a distance of 54.37 feet to a point.



# Lee Surveying and Mapping Co., Inc.

Land Surveys • Topography • Subdivisions • Construction Layout

117 N. Madriver St.  
Bellefontaine OH 43311



Phone: (937) 593-7335  
Fax: (937) 593-7444

S 5°-17'-39" E, a distance of 35.12 feet to a point referenced by a 3/4 inch iron rod found on center-line station 91 + 22.8, S 58°-27'-48" W, a distance of 35.37 feet.

S 14°-40'-46" E, a distance of 92.33 feet to a point.

S 20°-32'-32" E, a distance of 91.72 feet to a point.

S 28°-15'-27" E, a distance of 132.95 feet to a point.

S 39°-07'-41" E, a distance of 41.24 feet to a point.

S 33°-01'-36" E, a distance of 115.29 feet to a point.

S 27°-14'-54" E, a distance of 151.22 feet to a point.

S 25°-05'-58" E, a distance of 168.41 feet to a point.

S 23°-47'-10" E, a distance of 113.28 feet to a point referenced by a 1 inch square iron rod found at center-line station 82 + 03.4, S 46°-00'-18" W, a distance of 66.02 feet.

S 27°-47'-10" E, a distance of 196.36 feet to a point.

S 40°-44'-14" E, a distance of 75.07 feet to a point.

S 50°-55'-32" E, a distance of 50.72 feet to a point referenced by a 1 inch iron rod found at center-line station 79 + 36.2, N 73°-33'-13" W, a distance of 54.11 feet.

S 33°-24'-46" E, a distance of 207.62 feet to a point.

THENCE, S 86°-51'-58" W, a distance of 3169.27 feet to the point of beginning, passing a 5/8 inch iron rod set at 14.78 feet, a railroad spike set on the center-line of Township Road 229 at 36.78 feet, and a 5/8 inch iron rod set at 71.80 feet.

Containing 136.523 acres of which 2.316 acres are within the highway right-of-way and 1.289 acres are between the highway right-of-way and the river.

The basis for bearings is the south line of Section 12 being N 87°-00'-00" E, and all other bearings are from angles and distances measured in a field survey by Lee Surveying and Mapping Co., Inc. on February 7, 2000.

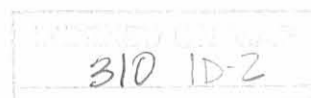
Description prepared by:

A handwritten signature in black ink, appearing to read 'Jeffrey I. Lee', is written over a faint circular stamp.

Jeffrey I. Lee  
Professional Surveyor 6359  
February 11, 2000



ORIGINAL STAMP IN GREEN  
L-2867



REC'D 2-22-00 SMLY OK ✓

# Lee Surveying and Mapping Co., Inc.

Land Surveys • Topography • Subdivisions • Construction Layout

117 N. Madriver St.  
Bellefontaine OH 43311



Phone: (937) 593-7335  
Fax: (937) 593-7444

## BARGA 136.523 ACRES TRACT B

Lying in Sections 12 and 13, Town 1, Range 8, Pleasant Township, Logan County, Ohio.

Being out of the Charles E. Barga, Trustee original 150.0 acre and 259.05 acre tracts as deeded and described in Official Record 197, Page 85, Tracts I and II, of the Logan County Records of Deeds and being more particularly described as follows:

Beginning at a 15 inch square concrete corner post found on the southwest corners of Section 12 and the Huber Rohrer, Trustee under the Rohrer Revocable Living Trust Agreement, original 64.66 acre tract, (O.R. 206, Pg. 117, Tract 2).

THENCE, with the south lines of Section 12 and the said 64.66 acre tract, N 87°-00'-00" E, a distance of 1022.99 feet to a 15 inch square concrete corner post found.

THENCE, with the east line of the said 64.66 acre tract, N 3°-08'-55" W, a distance of 178.78 feet to a 5/8 inch iron rod set.

THENCE, N 86°-51'-58" E, a distance of 1152.69 feet to a 5/8 inch iron rod set.

THENCE, S 3°-21'-39" E, a distance of 2817.06 feet to a 5/8 inch iron rod set.

THENCE, with the south line of the northwest quarter of Section 13 and the north line of the Mary E. Barga 76.9 acre tract, (O.R. 316, Pg. 807), S 86°-54'-43" W, a distance of 2176.15 feet to a stone found on the center-line of Township Road 75 at Station 43 + 13 (Logan County Engineers' Field Book 589, Page 47), passing a 5/8 inch iron rod set at 2156.15 feet.

THENCE, with the west line of Section 13 and the east lines of the Mary E. Barga 13.0 acre tract and 17.0 acre tract, (O.R. 316, Pg. 807), N 3°-21'-53" W, a distance of 2638.93 feet to the point of beginning, passing 5/8 inch iron rods set at 20.00 feet, 120.00 feet, 220.00 feet, 320.00 feet, 420.00 feet and 520.00 feet.

Containing 136.523 acres of which 0.009 acre is within the highway right-of-way, 4.731 acres are in Section 12 and 131.792 acres are in Section 13.

The basis for bearings is the south line of Section 12 being N 87°-00'-00" E, and all other bearings are from angles and distances measured in a field survey by Lee Surveying and Mapping Co., Inc. on February 7, 2000.

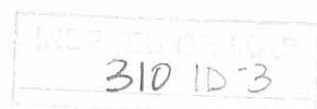
Description prepared by:

Jeffrey I. Lee  
Professional Surveyor 6359  
February 11, 2000



ORIGINAL STAMP IN GREEN

L-2867



REV'D 2-22-00 GMY OK ✓

# Lee Surveying and Mapping Co., Inc.

Land Surveys • Topography • Subdivisions • Construction Layout

117 N. Madriver St.  
Bellefontaine OH 43311



Phone: (937) 593-7335  
Fax: (937) 593-7444

## BARGA 136.523 ACRES TRACT C

Lying in Sections 12 and 13, Town 1, Range 8, Pleasant Township, Logan County, Ohio.

Being out of the Charles E. Barga, Trustee original 150.0 acre and 259.05 acre tracts as deeded and described in Official Record 197, Page 85, Tracts I and II of the Logan County Records of Deeds and being more particularly described as follows:

Beginning at a 15 inch square concrete corner post found on the southwest corner of Section 12 and the Huber Rohrer, Trustee under the Rohrer Revocable Living Trust Agreement, original 64.66 acre tract, (O.R. 206, Pg. 117, Tract 2).

THENCE, with the south lines of Section 12 and the said 64.66 acre tract, N 87°-00'-00" E, a distance of 1022.99 feet to a 15 inch square concrete corner post found.

THENCE, with the east line of the said 64.66 acre tract, N 3°-08'-55" W, a distance of 178.78 feet to a 5/8 inch iron rod set.

THENCE, N 86°-51'-58" E, a distance of 1152.69 feet to a 5/8 inch iron rod set at the TRUE POINT OF BEGINNING.

THENCE, N 86°-51'-58" E, a distance of 2016.58 feet to a point on the west edge of water of the Great Miami River, passing a 5/8 inch iron rod set at 1944.78 feet, a railroad spike set on the center-line of Township Road 229 at 1979.80 feet, and a 5/8 inch iron rod set at 2001.80 feet.

THENCE, with the west edge of water of the Great Miami River, the following fifteen (15) courses:

S 33°-24'-46" E, a distance of 44.60 feet to a point.

S 31°-04'-14" E, a distance of 226.67 feet to a point.

S 29°-44'-50" E, a distance of 243.28 feet to a point.

S 21°-01'-13" E, a distance of 180.04 feet to a point referenced by a 3/4 inch iron rod found on center-line station 70 + 57.5 (Logan County Engineers' Field Book 707, Pages 67-70), N 66°-27'-43" W, a distance of 87.33 feet.

S 1°-04'-49" W, a distance of 279.93 feet to a point referenced by a 3/4 inch iron rod found on center-line station 67 + 90.8, N 58°-35'-08" W, a distance of 92.20 feet.

S 17°-04'-16" W, a distance of 127.03 feet to a point.

S 24°-39'-56" W, a distance of 89.49 feet to a point.

S 15°-39'-52" W, a distance of 128.59 feet to a point.

S 4°-34'-36" W, a distance of 263.95 feet to a point.

S 1°-04'-40" E, a distance of 262.73 feet to a point.

S 6°-59'-06" W, a distance of 143.21 feet to a point.

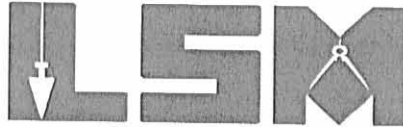
S 13°-38'-57" W, a distance of 122.68 feet to a point referenced by a 3/4 inch iron rod found on center-line station 54 + 75.77, S 30°-39'-30" W, a distance of 164.19 feet.

310 1D-4

# Lee Surveying and Mapping Co., Inc.

Land Surveys • Topography • Subdivisions • Construction Layout

117 N. Madriver St.  
Bellefontaine OH 43311



Phone: (937) 593-7335  
Fax: (937) 593-7444

S 10°-53'-14" W, a distance of 333.97 feet to a point.

S 11°-15'-26" W, a distance of 242.74 feet to a point reference by a 3/4 inch iron rod found on center-line station 49 + 95.5, S 47°-00'-27" W, a distance of 71.76 feet.

S 4°-05'-59" W, a distance of 251.95 feet to a point.

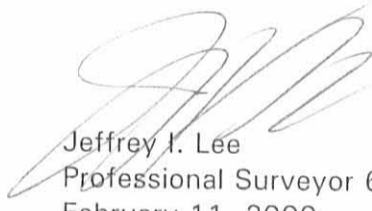
THENCE, with the north line of the Mary E. Barga 76.9 acre tract, (O.R. 316, Pg. 807), S 86°-54'-43" W, a distance of 1872.38 feet to a 5/8 inch iron rod set, passing a 5/8 inch iron rod set at 22.05, a railroad spike set on the center-line of Township Road 229 at 52.35 feet and a 5/8 inch iron rod set at 82.65 feet.

THENCE, N 3°-21'-39" W, a distance of 2817.06 feet to the point of beginning.

Containing 136.523 acres of which 4.014 acres are within the highway right-of-way, 8.724 acres are in Section 12, 127.799 acres are in Section 13 and 1.461 acres are between the highway right-of-way and the river.

The basis for bearings is the south line of Section 12, being N 87°-00'-00" E, and all other bearings are from angles and distances measured in a field survey by Lee Surveying and Mapping Co., Inc. on February 7, 2000.

Description prepared by:

  
Jeffrey I. Lee  
Professional Surveyor 6359  
February 11, 2000



ORIGINAL STAMP IN GREEN L-2867

310 10-5

REC'D 2-22-00 SMJ/ALV

# Lee Surveying and Mapping Co., Inc.

Land Surveys • Topography • Subdivisions • Construction Layout

117 N. Madriver St.  
Bellefontaine OH 43311



Phone: (937) 593-7335  
Fax: (937) 593-7444

## BARGA 29.493 ACRES TRACT D

Lying in Section 13, Town 1, Range 8, Pleasant Township, Logan County, Ohio.

Being out of the Mary E. Barga original 76.9 acre tract as deeded and described in Official Record 316, Page 807 of the Logan County Records of Deeds and being more particularly described as follows:

Beginning at a 15 inch square concrete corner post found on the southwest corners of Section 12 and the Huber Rohrer, Trustee under the Rohrer Revocable Living Trust Agreement, original 64.66 acre tract, (O.R. 206, Pg. 117, Tract 2).

THENCE, with the west line of Section 13 and the east line of the Mary E. Barga 17.0 acre and 13.0 acre tracts, (O.R. 316, Pg. 807), S 3°-21'-53" E, a distance of 2638.93 feet to a stone found on the center-line of Township Road 75 at station 43 + 13 (Logan County Engineers' Field Book 589, Page 47) at the TRUE POINT OF BEGINNING.

THENCE, with the south line of the northwest quarter of Section 13 and the south line of the Charles E. Barga, Trustee original 259.05 acre tract, (O.R. 197, Pg. 85, Tract II), N 86°-54'-43" E, a distance of 2654.82 feet to a 5/8 inch iron rod set, passing a 5/8 inch iron rod set at 20.00 feet.

THENCE, S 2°-06'-10" E, a distance of 477.13 feet to a 5/8 inch iron rod set.

THENCE, S 86°-34'-05" W, a distance of 2643.14 feet to a railroad spike set, passing a 5/8 inch iron rod set at 2623.09 feet.

THENCE, with the center-line of Township Road 75 (40 feet wide), N 3°-29'-49" W, a distance of 492.95 feet to the point of beginning.

Containing 29.493 acres of which 0.224 acre is within the highway right-of-way.

The basis for bearings is the south line of Section 12 being N 87°-00'-00" E, and all other bearings are from angles and distances measured in a field survey by Lee Surveying and Mapping Co., Inc. on February 7, 2000.

Description prepared by:

Jeffrey I. Lee  
Professional Surveyor 6359  
February 11, 2000

ORIGINAL STAMP IN GREEN



L-2867

310 1D-6

REV'D 2-22-00 GMM OK ✓  
**Lee Surveying and Mapping Co., Inc.**

Land Surveys • Topography • Subdivisions • Construction Layout

117 N. Madriver St.  
Bellefontaine OH 43311



Phone: (937) 593-7335  
Fax: (937) 593-7444

**BARGA  
29.493 ACRES  
TRACT E**

Lying in Section 13, Town 1, Range 8, Pleasant Township, Logan County, Ohio.

Being out of the Mary E. Barga original 76.9 acre tract as deeded and described in Official Record 316, Page 807 of the Logan County Records of Deeds and being more particularly described as follows:

Beginning at a 15 inch square concrete corner post found on the southwest corners of Section 12 and the Huber Rohrer, Trustee under the Rohrer Revocable Living Trust Agreement, original 64.66 acre tract, (O.R. 206, Pg. 117, Tract 2).

THENCE, with the west line of Section 13 and the east line of the Mary E. Barga 17.0 acre and 13.0 acre tracts, (O.R. 316, Pg. 807), S 3°-21'-53" E, a distance of 2638.93 feet to a stone found on the center-line of Township Road 75 at station 43 + 13 (Logan County Engineers' Field Book 589, Page 47).

THENCE, with the west line of Section 13 and the center-line of Township Road 75 (40 feet wide), S 3°-29'-49" E, a distance of 492.95 feet to a railroad spike set at the TRUE POINT OF BEGINNING.

THENCE, N 86°-34'-05" E, a distance of 2643.14 feet to a 5/8 inch iron rod set, passing a 5/8 inch iron rod set at 20.05 feet.

THENCE, S 3°-29'-49" E, a distance of 486.06 feet to a 5/8 inch iron rod set.

THENCE, with the north lines of the Betty Ann Dye original 90.27 acre tract (O.R. 205, Pg. 458) and the James R. Shoe 1.85 acre tract (O.R. 70, Pg. 981), S 86°-34'-05" W, a distance of 2643.14 feet to a MAG nail set, passing a 5/8 inch iron rod set at 2623.09 feet.

THENCE, with the west line of Section 13 and the center-line of Township Road 75, N 3°-29'-49" W, a distance of 486.06 feet the point of beginning.

Containing 29.493 acres of which 0.224 acre is within the highway right-of-way.

The basis for bearings is the south line of Section 12 being N 87°-00'-00" E, and all other bearings are from angles and distances measured in a field survey by Lee Surveying and Mapping Co., Inc. on February 7, 2000.

Description prepared by:

A handwritten signature in black ink, appearing to read 'Jeffrey I. Lee', is written over a faint circular stamp.

Jeffrey I. Lee  
Professional Surveyor 6359  
February 11, 2000



L-2867

310 1D-7

REC'D 2-22-00 SMJ ok ✓  
**Lee Surveying and Mapping Co., Inc.**

Land Surveys • Topography • Subdivisions • Construction Layout

117 N. Madriver St.  
Bellefontaine OH 43311



Phone: (937) 593-7335  
Fax: (937) 593-7444

**BARGA  
29.493 ACRES  
TRACT F**

Lying in Section 13, Town 1, Range 8, Pleasant Township, Logan County, Ohio.

Being out of the Mary E. Barga original 76.9 acre tract as deeded and described in Official Record 316, Page 807 of the Logan County Records of Deeds and being more particularly described as follows:

Beginning at a 15 inch square concrete corner post found on the southwest corner of Section 12 and the Huber Rohrer, Trustee under the Rohrer Revocable Living Trust Agreement, original 64.66 acre tract, (O.R. 206, Pg. 117, Tract 2).

THENCE, with the west line of Section 13 and the east line of the Mary E. Barga 17.0 acre and 13.0 acre tracts, (O.R. 316, Pg. 807), S 3°-21'-53" E, a distance of 2638.93 feet to a stone found on the center-line of Township Road 75 at station 43 + 13 (Logan County Engineers' Field Book 589, Page 47).

THENCE, with the south line of the north half of Section 13 and the south line of the Charles E. Barga, Trustee original 259.05 acre tract (O.R. 197, Pg. 85, Tract II), N 86°-54'-43" E, a distance of 2654.82 feet to a 5/8 inch iron rod set at the TRUE POINT OF BEGINNING, passing a 5/8 inch iron rod set at 20.00 feet.

THENCE, with the south line of the north half of Section 13 and the south line of the said 259.05 acre tract, N 86°-54'-43" E, a distance of 1393.71 feet to a point on the west edge of water of the Great Miami River, passing a 5/8 inch iron rod set at 1311.06 feet, a railroad spike set on the center-line of Township Road 229 at 1341.36 feet and a 5/8 inch iron rod set at 1371.66 feet.

THENCE, with the west edge of water of the Great Miami River, the following six (6) courses:

S 4°-05'-59" W, a distance of 263.64 feet to a point.

S 0°-25'-28" W, a distance of 245.54 feet to a point.

S 5°-53'-30" W, a distance of 152.09 feet to a point.

S 13°-54'-39" W, a distance of 165.17 feet to a point.

S 4°-58'-35" W, a distance of 106.81 feet to a point.

S 21°-15'-23" W, a distance of 38.46 feet to a point.

THENCE, with the north line of the Betty Ann Dye original 90.27 acre tract, (O.R. 205, Pg. 458), S 86°-34'-05" W, a distance of 1247.57 feet to a 5/8 inch iron rod set, passing a 5/8 inch iron rod set at 6.21 feet, a railroad spike set on the center-line of Township Road 229 at 36.53 feet and a 5/8 inch iron rod set at 66.85 feet.

THENCE, N 3°-29'-49" W, a distance of 486.06 feet to a 5/8 inch iron rod set.

THENCE, N 2°-06'-10" W, a distance of 477.13 feet to the point of beginning.

Containing 29.493 acres of which 1.330 acres are within the highway right-of-way and 0.659 acre is between the highway right-of-way and the river.

310 1D-8



# Lee Surveying and Mapping Co., Inc.

Land Surveys • Topography • Subdivisions • Construction Layout

117 N. Madriver St.  
Bellefontaine OH 43311



Phone: (937) 593-7335  
Fax: (937) 593-7444

The basis for bearings is the south line of Section 12 being N 87°-00'-00" E, and all other bearings are from angles and distances measured in a field survey by Lee Surveying and Mapping Co., Inc. on February 7, 2000.

Description prepared by:

A handwritten signature in black ink, appearing to read 'J. Lee', is written over the printed name.

Jeffrey I. Lee  
Professional Surveyor 6359  
February 11, 2000



ORIGINAL STAMP IN GREEN L-2867

310 1D-9

REC'D 2-24-00 SMM OIL V.

# Lee Surveying and Mapping Co., Inc.

Land Surveys • Topography • Subdivisions • Construction Layout

117 N. Madriver St.  
Bellefontaine OH 43311



Phone: (937) 593-7335  
Fax: (937) 593-7444

## BARGA 70 FEET WIDE INGRESS/EGRESS EASEMENT

Lying in Section 13, Town 1, Range 8, Pleasant Township, Logan County, Ohio.

Being an Ingress\Egress easement over the Mary E. Barga original 76.9 acre tract as deeded and described in Official Record 316, Page 807 of the Logan County Records of Deeds and being more particularly described as follows:

Beginning at a stone found on the southwest corner of the northwest quarter of Section 13 at an angle in the center-line of Township Road 75 at center-line Station 43 + 13 (Logan County Engineers Field Book 589, Page 47).

THENCE, with the south lines of the northwest quarter of Section 13 and the Charles E. Barga, Trustee 259.05 acre tract (O.R. 197, Pg. 85, Tract II), N 86°-54'-43" E, a distance of 2176.15 feet to a 5/8 inch iron rod set.

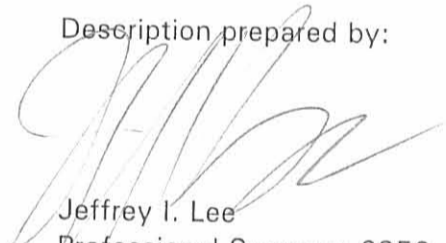
THENCE, S 3°-21'-39" E, a distance of 70.00 feet to a point.

THENCE, parallel to and 70 feet south of the south lines of the northwest quarter of Section 13 and the said 259.05 acre tract, S 86°-54'-43" W, a distance of 2175.99 feet to a point on the center-line of Township Road 75.

THENCE, with the west line of Section 13 and the center-line of Township Road 75, (40 feet wide), N 3°-29'-49" W, a distance of 70.00 feet to the point of beginning.

The basis for bearings is the south line of Section 12 being N 87°-00'-00" E, and all other bearings are from angles and distances measured in a field survey by Lee Surveying and Mapping Co., Inc. on February 7, 2000.

Description prepared by:

  
Jeffrey I. Lee  
Professional Surveyor 6359  
February 11, 2000

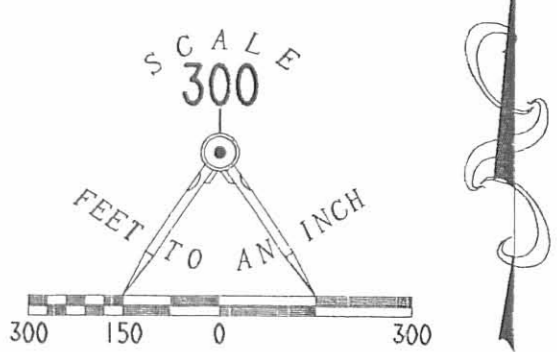


ORIGINAL STAMP IN GREEN  
L-2867

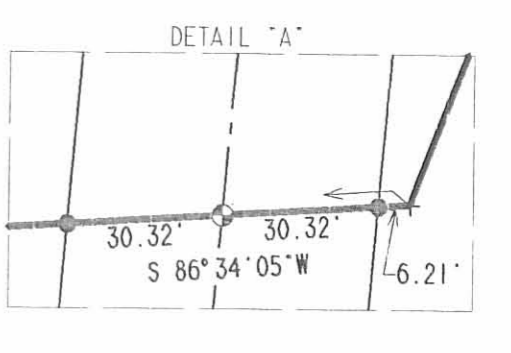
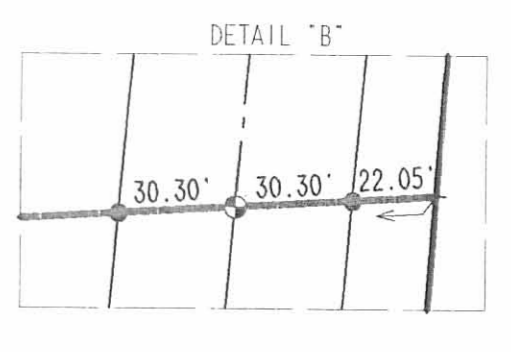
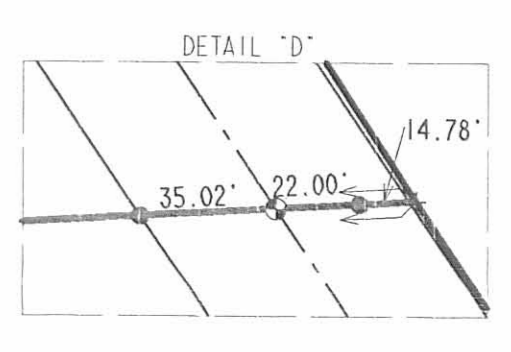
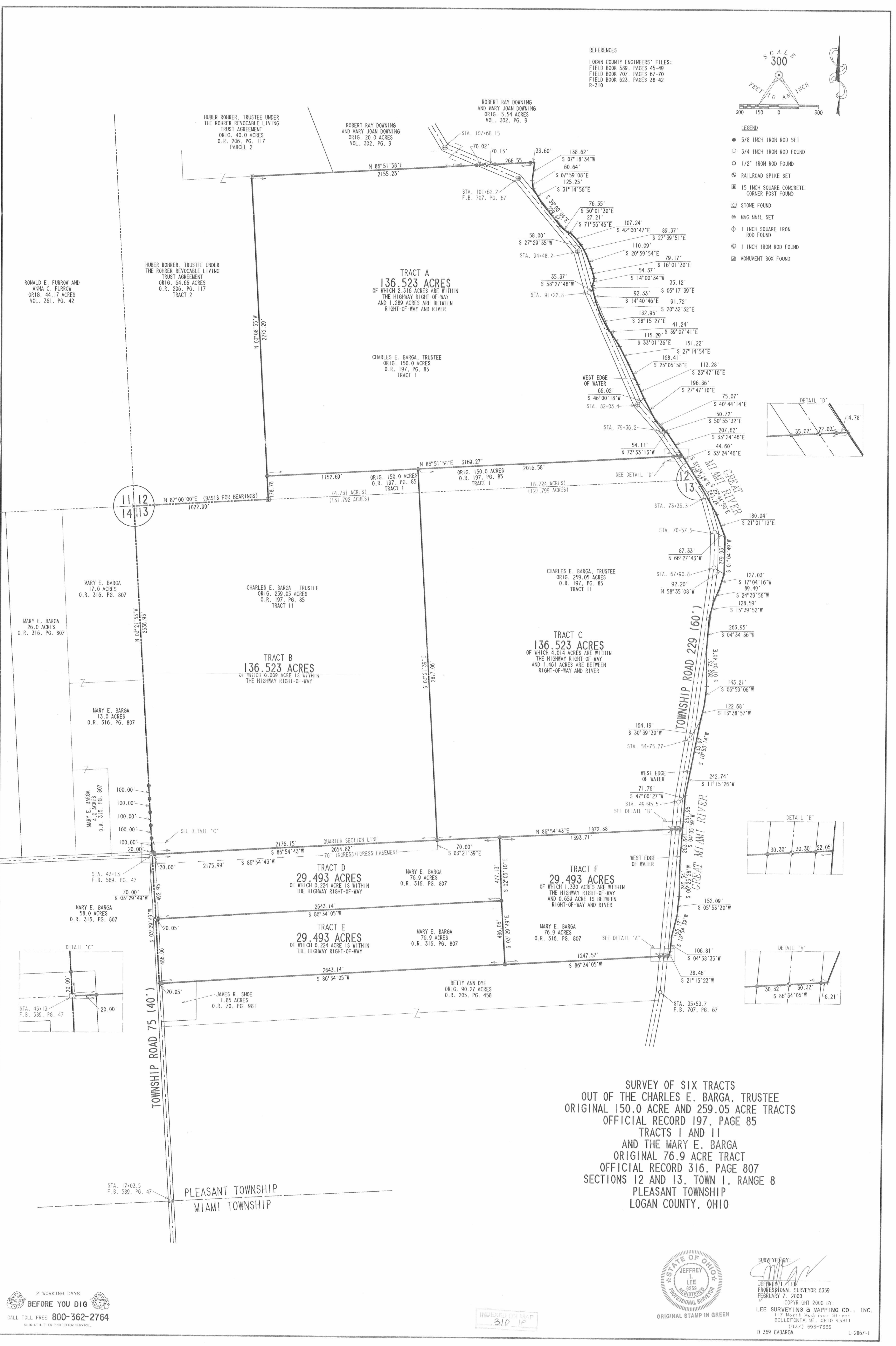
INDEXED ON MAP  
310 1D-10

REV'D 2-22-00 SMY akv

REFERENCES  
LOGAN COUNTY ENGINEERS' FILES:  
FIELD BOOK 589, PAGES 45-49  
FIELD BOOK 707, PAGES 67-70  
FIELD BOOK 623, PAGES 38-42  
R-310



- LEGEND
- 5/8 INCH IRON ROD SET
  - 3/4 INCH IRON ROD FOUND
  - 1/2" IRON ROD FOUND
  - ⊙ RAILROAD SPIKE SET
  - 15 INCH SQUARE CONCRETE CORNER POST FOUND
  - ⊠ STONE FOUND
  - ⊙ MAG NAIL SET
  - ⊕ 1 INCH SQUARE IRON ROD FOUND
  - ⊕ 1 INCH IRON ROD FOUND
  - ⊠ MONUMENT BOX FOUND



SURVEY OF SIX TRACTS  
OUT OF THE CHARLES E. BARGA, TRUSTEE  
ORIGINAL 150.0 ACRE AND 259.05 ACRE TRACTS  
OFFICIAL RECORD 197, PAGE 85  
TRACTS I AND II  
AND THE MARY E. BARGA  
ORIGINAL 76.9 ACRE TRACT  
OFFICIAL RECORD 316, PAGE 807  
SECTIONS 12 AND 13, TOWN 1, RANGE 8  
PLEASANT TOWNSHIP  
MIAMI TOWNSHIP  
LOGAN COUNTY, OHIO



SURVEYED BY:  
*Jeffrey Lee*  
JEFFREY L. LEE  
PROFESSIONAL SURVEYOR 6359  
FEBRUARY 7, 2000  
COPYRIGHT 2000 BY:  
LEE SURVEYING & MAPPING CO., INC.  
117 North Medriver Street  
BELLEFONTAINE, OHIO 43311  
(937) 593-7335  
D 369 CMBARGA L-2867-1

2 WORKING DAYS  
**BEFORE YOU DIG**  
CALL TOLL FREE 800-362-2764  
OHIO UTILITIES PROTECTION SERVICE.

INDEXED ON MAP 310 JP

# Lee Surveying and Mapping Co., Inc.

Land Surveys • Topography • Subdivisions • Construction Layout

117 N. Madriver St.  
Bellefontaine OH 43311



Phone: (937) 593-7335  
Fax: (937) 593-7444

## ALLEN 6.146 ACRES

Lying in Section 12, Town 1, Range 8, Pleasant Township, Logan County, Ohio.

Being out of the Chester L. Allen original 136.523 acre tract as deeded and described in Official Record 448, Page 623 of the Logan County Records of Deeds and being more particularly described as follows:

Beginning at a 1 inch square iron rod found at center-line station 82 +03.4 of Township Road 229 (Logan County Engineer's Field Book 707, Pages 67-69).

THENCE, with the center-line of Township Road 229 (60 feet wide), N 24°-09'-53" W, a distance of 356.44 feet to a MAG nail set at the TRUE POINT OF BEGINNING.

THENCE, S 88°-00'-47" W, a distance of 578.40 feet to a 5/8 inch iron rod set, passing a 5/8 inch iron rod set at 32.48 feet.

THENCE, N 4°-48'-55" W. a distance of 510.86 feet to a 5/8 inch iron rod set.

THENCE, N 87°-12'-14" E a distance of 426.97 feet to a point on the west edge of the Great Miami River passing a 5/8 inch iron rod set at 361.19 feet, a MAG nail set at 393.40 feet on the center-line of Township Road 229 and a 5/8 inch iron rod set at 412.47 feet.

THENCE, with the west edge of water of the Great Miami River, the following six (6) courses:

S 14°-40'-46" E, a distance of 69.18 feet to a point within the road right-of-way.

S 20°-32'-32" E, a distance of 91.72 feet to a point within the road right-of-way

S 28°-15'-27" E, a distance of 132.95 feet to a point within the road right-of-way

S 39°-07'-41" E, a distance of 41.24 feet to a point.

S 33°-01'-36" E, a distance of 115.29 feet to a point.

S 27°-14'-54" E, a distance of 122.68 feet to a point.

THENCE, S 88°-00'-47" W, a distance of 63.25 feet to the point of beginning, passing a 5/8 inch iron rod set at 33.13 feet.

Containing 6.146 acres of which 0.767 acre is within the road right-of-way.

The basis for bearings is the center-line of Township Road 229 being N 24°-09'-53" W, and all other bearings are from angles and distances measured in a field survey by Lee Surveying and Mapping Co., Inc. on April 14, 2001.

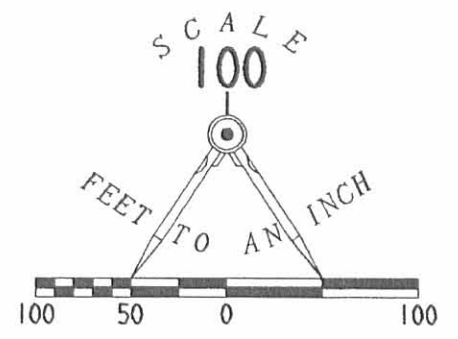
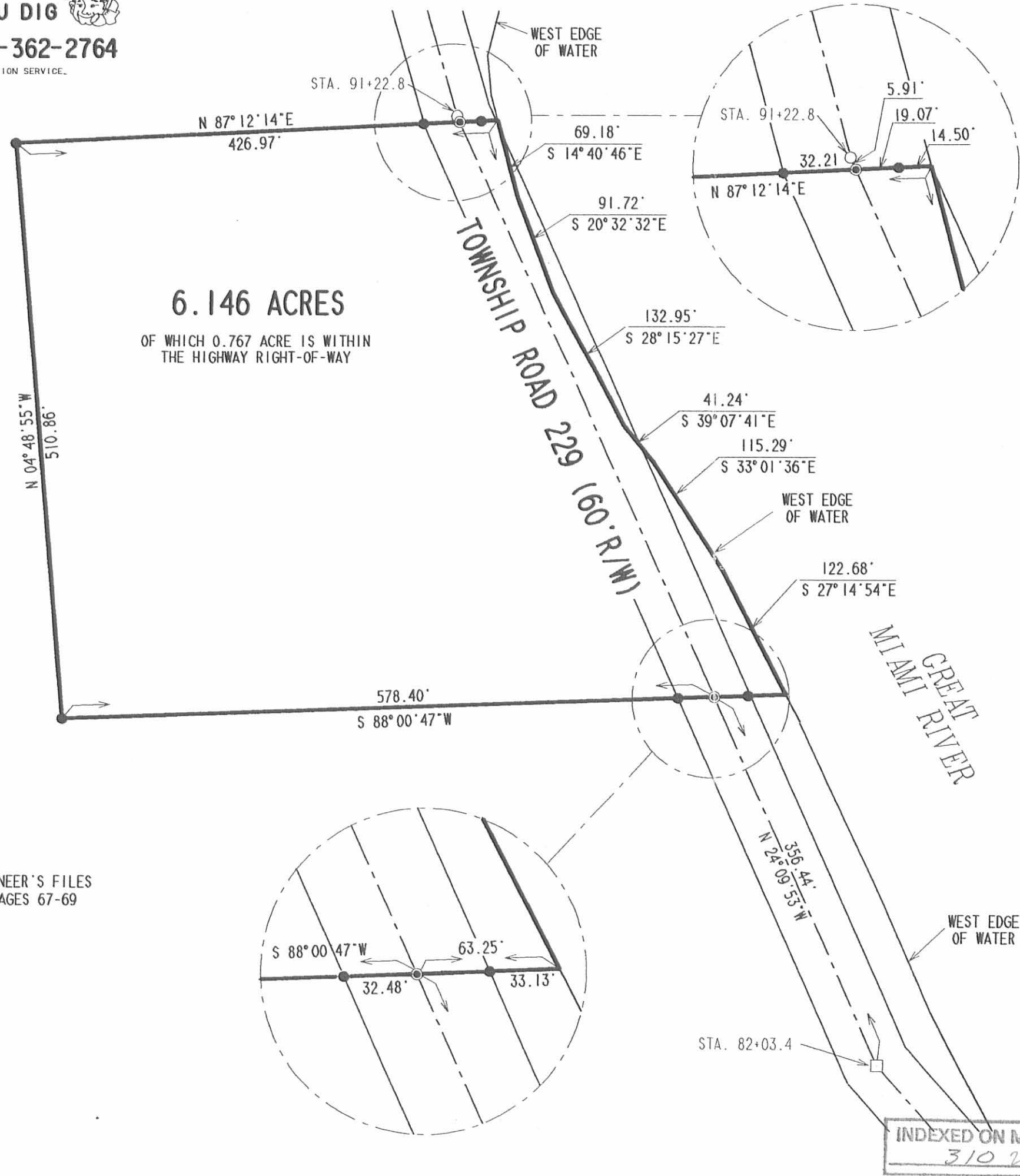
Description prepared by:

Jeffrey J. Lee  
Professional Surveyor 6359  
April 26, 2001

INDEXED ON MAP  
310 20



ORIGINAL STAMP IN GRL-2867



- LEGEND**
- 1 INCH SQUARE IRON ROD FOUND
  - 3/4 INCH IRON ROD FOUND
  - MAG NAIL SET
  - 5/8 INCH IRON ROD SET

**BOUNDARY SURVEY OF A 6.146 ACRE TRACT  
 OUT OF THE CHESTER L. ALLEN  
 ORIGINAL 136.523 ACRE TRACT  
 OFFICIAL RECORD 448, PAGE 623  
 SECTION 12, TOWN 1, RANGE 8  
 PLEASANT TOWNSHIP  
 LOGAN COUNTY, OHIO**

CHESTER L. ALLEN  
 ORIG. 136.523 ACRE  
 O.R. 448, PAGE 623

**REFERENCES:**  
 LOGAN COUNTY ENGINEER'S FILES  
 FIELD BOOK 707, PAGES 67-69

SURVEYED BY:  
  
 JEFFREY I. LEE  
 PROFESSIONAL SURVEYOR 6359  
 APRIL 16, 2001



COPYRIGHT 2000 BY:  
**LEE SURVEYING & MAPPING CO., INC.**  
 117 North Madriver Street  
 BELLEFONTAINE, OHIO 43311  
 (937) 593-7335

INDEXED ON MAP  
 310 2P

ORIGINAL STAMP IN GREEN

D-397 CMBARGA2 L-2867-3

Description of One Hundred and Fifty Acres.

( M. L. Rohrer Estate )

The following described land situated in Pleasant Township Logan County, Ohio. being part of Fractional Section 13, T. 1, R. 8, and bounded as follows: commencing at a stone in the South line of said Section 13 at a point 15.51 chains east from a stone at the southwest corner of said section 13.

Thence N. 5' E. parallel with the west line of said ~~13~~, Section 13, 37.20 chains to a stone ( 4"X 12"X34" ) and <sup>e</sup>pieces of drain ~~tile~~ in the south line of Daniel Rohrer's 19 Acre tract.

Thence with the south line of the said 19 acre tract and with the south line of Harry E. Loffers land S. 89 $\frac{3}{4}$ ° E. 30.96 chains to a stake .

Thence down stream with the meanderings of the Miami River , S. 37 $\frac{3}{4}$ ° E. 5.17 chains , XXXX Thence S.41 E. 6.15 chains Thence S. 14. $\frac{1}{4}$  E. 8.83 chains , Thence S. 38 $\frac{1}{2}$  E. 4.53 chains Thence S. 18 $\frac{1}{2}$  E. 4.83 chains, Thence S. 38 $\frac{1}{4}$  E. 4.57 Chains Thence S. 36 $\frac{1}{2}$  E. 3.63 chains, Thence S. 30 E. 5.42 chains to a stake in the south line of said Section 13 from which a stake on the river bank bears N. 89 $\frac{3}{4}$ ° W. 13 links distant , said witness stake being witnessed by a Burr Oak Stump 30 inches in diameter bearing N. 51° W. 14 links distant.

LINE Thence leaving the river channel and running on the Section N. 89 $\frac{3}{4}$ ° W. 49.64 chains to the place of beginning containing 150 acres

INDEXED ON MAP

3/0 3D-1

Description of 64.66 Acre Tract.

( M. L. Rohrer Estate )

The following described land situated in Pleasant Township, Logan County, Ohio, being part of Fractional Section 13, T. 1, R. 8, and bounded as follows: commencing at a stone at the southwest corner of said Section 13 from which a White Oak Stump 32 inches in diameter bears ~~Northwest~~ <sup>34°W</sup> ~~32~~ <sup>4</sup> links distant.

Thence with the west line of said Section N. 5 E. 45.00 chains to the center of the Sidney pike.

Thence with the center of the Sidney Pike N.  $69\frac{3}{4}^{\circ}$  E. 8.00 chains to the northwest corner of Daniel Rohrer 19 Acre tract.

Thence with the west line of said 19 acre tract  $S\frac{1}{4}^{\circ}$  W. 10.63 chains to a post <sup>at</sup> of the southwest corner of said 19 <sup>Acre</sup> tract .

Thence with the south line of the said 19 <sup>Acre</sup> tract S.  $89\frac{3}{4}^{\circ}$  E. 7.95 chains to a stone ( 4"X13" X 34" ) and pieces of drain tile.

Thence S. 5 W. 37.20 chains to a stone in the south line of said Section 13.

Thence with the Section line N.  $89\frac{3}{4}^{\circ}$  W. 15.51 chains to the place of beginning containing 64.66 Acres.

INDEXED ON MAP  
310 30-2

Description of One Hundred and Fifty Acres.

( M. L. Rohrer Estate )

The following described land situated in Pleasant Township Logan County, Ohio, being part of Fractional Section 13, T. 1, R. 8, and bounded as follows: commencing at a stone in the South line of said Section 13 at a point 15.51 chains east from a stone at the southwest corner of said section 13.

Thence N. 5' E. parallel with the west line of said ~~13~~, Section 13, 37.30 chains to a stone ( 4"X 12"X24" ) and piece of drain tile in the south line of Daniel Rohrer's 19 Acre tract.

Thence with the south line of the said 19 acre tract and with the south line of Harry E. Loeffers land S.  $89\frac{3}{4}$  E. 30.96 chains to a stake .

Thence down stream with the meanderings of the Miami River , S.  $37\frac{3}{4}$  E. 5.17 chains , ~~XXXX~~ Thence S.41 E. 6.15 chains Thence S.  $14\frac{1}{4}$  E. 8.82 chains , Thence S.  $38\frac{1}{2}$  E. 4.52 chains Thence S.  $18\frac{1}{2}$  E. 4.83 chains, Thence S.  $38\frac{1}{4}$  E. 4.57 chains Thence S.  $36\frac{1}{2}$  E. 3.63 chains, Thence S. 30 E. 5.42 chains to a stake in the south line of said Section 13 from which a stake on the river bank bears N.  $89\frac{3}{4}$  W. 13 links distant , said witness stake being witnessed by a Burr Oak Stump 30 inches in diameter bearing N. 51 W. 14 links distant.

*LINE* Thence leaving the river channel and running on the Section N.  $89\frac{3}{4}$  W. 49.64 chains to the place of beginning containing 150 acres.

INDEXED ON MAP  
3/0 3D-3



The southwest-corner I located by the intersection of the original lines which are well marked.

Running the west line N. cross creek at 13, 16½ + 20 chains respectively, and the State road at 45.00 chains

The south east corner of the 100 acres is 2 leaning willows from the same root = stone in line west 44 links & from the stone a cottonwood tree 48" in diameter is a N. E. direction 18 lks.

Done in presence of Adam Martini, John Hill  
Wm Stoutemoyer, Nelson Peck, M L. Poles &  
No chainmen

A. J. Knight }  
E. J. Wheeler } chainmen

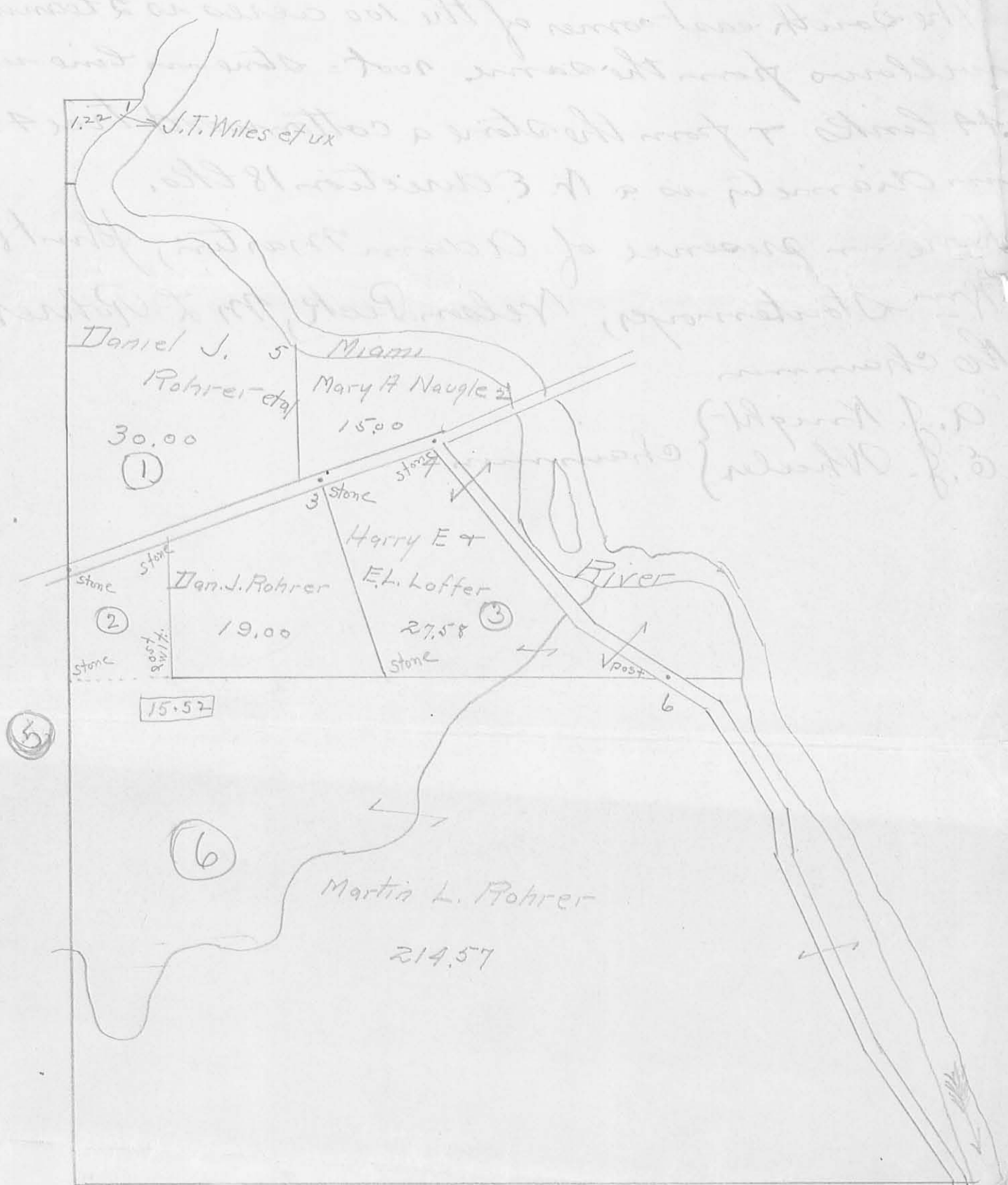
INDEXED ON MAP  
310 4D

INDEXED ON MAP  
310 4D

Pleasant Township

(7)

Sec. 12 T. 1 P. 8



INDEXED ON MAP  
310 4P

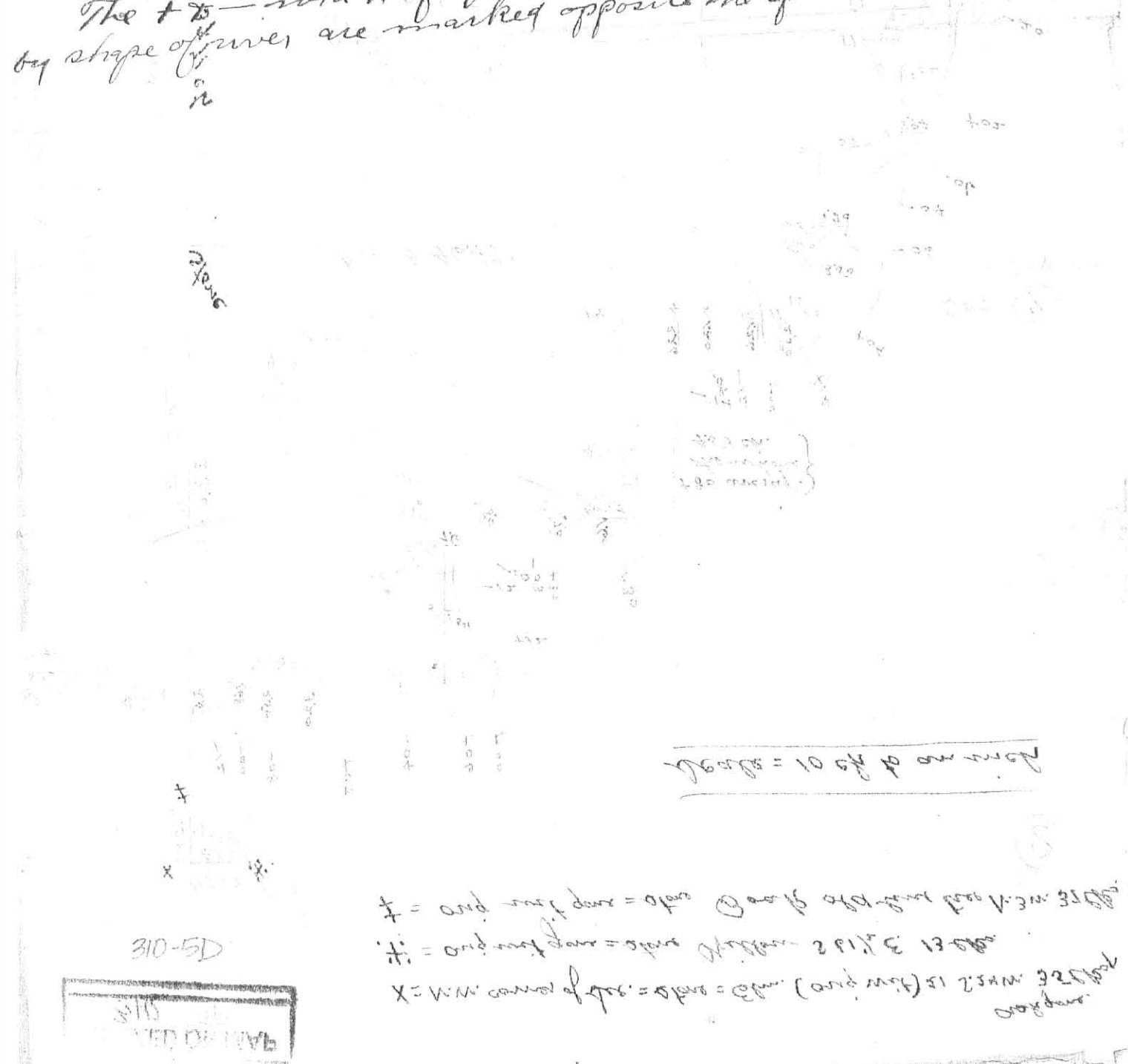
INDEXED ON MAP  
310 4P

The annexed plat is a representation of Trac. Sec. 12, T. 1 R. 8 as surveyed by me H. C. Moore on 29 & 30 day of Dec. 1863 at request of M. L. Rohrer for purpose of finding lines and corners thereof & perpetuating testimony of the same, and also to ascertain the area thereof & of laying off 100 acres off the north end of the south part of said Sec. as sold by said Rohrer to John Hill.

As shown by plat - the Miami River divides said Sec. into two parts. The north part contains 122 acres and the south part - 307.60 acres making in all 308.80 acres.

The bearing and length of the various lines are marked on the plat - The "base lines" along the river are all run Parallel with  $\gamma$  at right angles to the South line = N. 87 E.  $\gamma$  S 3 E. save one marked S 35 1/2 E 9.14

The offset lines are at right angles to the Base lines and the length marked in red ink. The  $\gamma$  width of spaces between offsets caused by shape of river are marked opposite the spaces in red ink.



310-5D

PLAT OF THE

# = and ...  
 \* = and ...  
 X = and ...



The following real estate being in fractional sect. 12, T. 1, Range 8 east M.M. and bounded and described as follows; beginning at a stone on the S.W. bank of the Great Miami River being at the original N. corner to the S. fractional part of said fractional Sect. from which a beech (orig. Wit) now 23 inches in dia. bears S 12 W 26 links being also in the original W. line of said fractional Sect 1 and about 10 chains S. of the N.W. corner of said Sect; thence with the W. line S 2° 48' E 33.60 chains crossing the Sidney State road at 25.65 chains to a stone; thence parallel with the S. line of the Sect. N 87° E 46.47 chains crossing Young's run at 37.50 chains to 2 willows each about 1 foot in dia. and bearing S. and standing on the W. bank of the said river from which tree a stone in the line west 44 links and from the said stone a cotten wood tree 48 in. dia. bears northwestwardly 18 links distant; thence northwestwardly with the S.W. bank of said river and the meanderings thereof crossing said road to the beginning, containing 100 acres of land.

Beginning at the S.W. corner of said fractional section 12; thence N. with west line of said Sect. N 45 chains to center of state road; thence Northeast with center of said state road 8 chains to a stone; thence S. parallel with west line of said section 10 chains to a stone; thence at right angles with south line of land of H.E. and F. L. Loffe 43 chains to the Miami River, being the the east line of said fractional section; thence southeasterly with the meanderings of said river to the southeast corner of said fractional section; thence with South line of said fractional section west 67 chains to the beginning, containing 214.57 acres

Aerl to Martin L. Roher.

Vol. 32, P 77.

The fractional Section 12 of township 1, range 8 east of the meridian line.

INDEXED ON MAP

310 CD