

Rec'd 2-22-2008 SMY OK ✓
Lee Surveying and Mapping Co., Inc.

Land Surveys • Topography • Subdivisions • Construction Layout

117 N. Madriver St.
Bellefontaine OH 43311



Phone: (937) 593-7335
Fax: (937) 593-7444

**BARGA
136.523 ACRES
TRACT A**

Lying in Section 12, Town 1, Range 8, Pleasant Township, Logan County, Ohio.

Being out of the Charles E. Barga, Trustee original 150.0 acre tract as deeded and described in Official Record 197, Page 85, Tract I of the Logan County Records of Deeds and being more particularly described as follows:

Beginning at a 15 inch square concrete corner post found on the southwest corners of Section 12 and the Huber Rohrer, Trustee under the Rohrer Revocable Living Trust Agreement, original 64.66 acre tract (O.R. 206, Pg. 117, Tract 2).

THENCE, with the south lines of Section 12 and the said 64.66 acre tract, N 87°-00'-00" E, a distance of 1022.99 feet to a 15 inch square concrete corner post found.

THENCE, with the east line of the said 64.66 acre tract, N 3°-08'-55" W, a distance of 178.78 feet to a 5/8 inch iron rod set at the TRUE POINT OF BEGINNING.

THENCE, with the east line of the said 64.66 acre tract, N 3°-08'-55" W, a distance of 2272.29 feet to a 15 inch square concrete corner post found.

THENCE, with the south lines of the Huber Rohrer, Trustee under the Rohrer Revocable Living Trust Agreement, original 40.0 acre tract (O.R. 206, Pg. 117, Parcel 2) and the Robert Ray Downing original 20.0 acre and 5.54 acre tracts (Vol. 302, Pg. 9), N 86°-51'-58" E, a distance of 2155.23 feet to a point on the west edge of water of the Great Miami River, passing a 5/8 inch iron rod set at 1714.91, a railroad spike set on the center-line of Township Road 229 at 1784.93, a 5/8 inch iron rod set at 1855.08, and a 5/8 inch iron rod set at 2121.63 feet.

THENCE, with the west edge of water of the Great Miami River, the following twenty-four (24) courses:

S 07°-18'-34" W, a distance of 138.62 feet to a point.

S 07°-59'-08" E, a distance of 60.64 feet to a point.

S 31°-14'-56" E, a distance of 125.25 feet to a point.

S 39°-00'-04" E, a distance of 229.47 feet to a point.

S 50°-01'-30" E, a distance of 76.55 feet to a point.

S 71°-56'-46" E, a distance of 27.21 feet to a point.

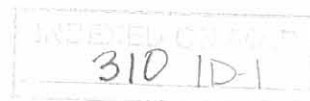
S 42°-00'-47" E, a distance of 107.24 feet to a point referenced by a 1 inch iron rod found on center-line station 94 + 48.2 (Logan County Engineers' Field Book 707, page 67),
S 27°-29'-35" W, a distance of 58.00 feet.

S 27°-39'-51" E, a distance of 89.37 feet to a point.

S 20°-59'-54" E, a distance of 110.09 feet to a point.

S 16°-01'-30" E, a distance of 79.17 feet to a point.

S 14°-00'-34" W, a distance of 54.37 feet to a point.



Lee Surveying and Mapping Co., Inc.

Land Surveys • Topography • Subdivisions • Construction Layout

117 N. Madriver St.
Bellefontaine OH 43311



Phone: (937) 593-7335
Fax: (937) 593-7444

S 5°-17'-39" E, a distance of 35.12 feet to a point referenced by a 3/4 inch iron rod found on center-line station 91 + 22.8, S 58°-27'-48" W, a distance of 35.37 feet.

S 14°-40'-46" E, a distance of 92.33 feet to a point.

S 20°-32'-32" E, a distance of 91.72 feet to a point.

S 28°-15'-27" E, a distance of 132.95 feet to a point.

S 39°-07'-41" E, a distance of 41.24 feet to a point.

S 33°-01'-36" E, a distance of 115.29 feet to a point.

S 27°-14'-54" E, a distance of 151.22 feet to a point.

S 25°-05'-58" E, a distance of 168.41 feet to a point.

S 23°-47'-10" E, a distance of 113.28 feet to a point referenced by a 1 inch square iron rod found at center-line station 82 + 03.4, S 46°-00'-18" W, a distance of 66.02 feet.

S 27°-47'-10" E, a distance of 196.36 feet to a point.

S 40°-44'-14" E, a distance of 75.07 feet to a point.

S 50°-55'-32" E, a distance of 50.72 feet to a point referenced by a 1 inch iron rod found at center-line station 79 + 36.2, N 73°-33'-13" W, a distance of 54.11 feet.

S 33°-24'-46" E, a distance of 207.62 feet to a point.

THENCE, S 86°-51'-58" W, a distance of 3169.27 feet to the point of beginning, passing a 5/8 inch iron rod set at 14.78 feet, a railroad spike set on the center-line of Township Road 229 at 36.78 feet, and a 5/8 inch iron rod set at 71.80 feet.

Containing 136.523 acres of which 2.316 acres are within the highway right-of-way and 1.289 acres are between the highway right-of-way and the river.

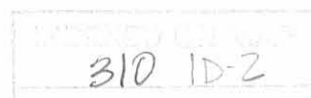
The basis for bearings is the south line of Section 12 being N 87°-00'-00" E, and all other bearings are from angles and distances measured in a field survey by Lee Surveying and Mapping Co., Inc. on February 7, 2000.

Description prepared by:


Jeffrey I. Lee
Professional Surveyor 6359
February 11, 2000



ORIGINAL STAMP IN GREEN
L-2867



REC'D 2-22-00 SMLY OK ✓

Lee Surveying and Mapping Co., Inc.

Land Surveys • Topography • Subdivisions • Construction Layout

117 N. Madriver St.
Bellefontaine OH 43311



Phone: (937) 593-7335
Fax: (937) 593-7444

BARGA 136.523 ACRES TRACT B

Lying in Sections 12 and 13, Town 1, Range 8, Pleasant Township, Logan County, Ohio.

Being out of the Charles E. Barga, Trustee original 150.0 acre and 259.05 acre tracts as deeded and described in Official Record 197, Page 85, Tracts I and II, of the Logan County Records of Deeds and being more particularly described as follows:

Beginning at a 15 inch square concrete corner post found on the southwest corners of Section 12 and the Huber Rohrer, Trustee under the Rohrer Revocable Living Trust Agreement, original 64.66 acre tract, (O.R. 206, Pg. 117, Tract 2).

THENCE, with the south lines of Section 12 and the said 64.66 acre tract, N 87°-00'-00" E, a distance of 1022.99 feet to a 15 inch square concrete corner post found.

THENCE, with the east line of the said 64.66 acre tract, N 3°-08'-55" W, a distance of 178.78 feet to a 5/8 inch iron rod set.

THENCE, N 86°-51'-58" E, a distance of 1152.69 feet to a 5/8 inch iron rod set.

THENCE, S 3°-21'-39" E, a distance of 2817.06 feet to a 5/8 inch iron rod set.

THENCE, with the south line of the northwest quarter of Section 13 and the north line of the Mary E. Barga 76.9 acre tract, (O.R. 316, Pg. 807), S 86°-54'-43" W, a distance of 2176.15 feet to a stone found on the center-line of Township Road 75 at Station 43 + 13 (Logan County Engineers' Field Book 589, Page 47), passing a 5/8 inch iron rod set at 2156.15 feet.

THENCE, with the west line of Section 13 and the east lines of the Mary E. Barga 13.0 acre tract and 17.0 acre tract, (O.R. 316, Pg. 807), N 3°-21'-53" W, a distance of 2638.93 feet to the point of beginning, passing 5/8 inch iron rods set at 20.00 feet, 120.00 feet, 220.00 feet, 320.00 feet, 420.00 feet and 520.00 feet.

Containing 136.523 acres of which 0.009 acre is within the highway right-of-way, 4.731 acres are in Section 12 and 131.792 acres are in Section 13.

The basis for bearings is the south line of Section 12 being N 87°-00'-00" E, and all other bearings are from angles and distances measured in a field survey by Lee Surveying and Mapping Co., Inc. on February 7, 2000.

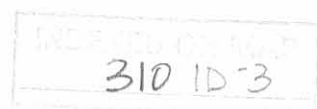
Description prepared by:

Jeffrey I. Lee
Professional Surveyor 6359
February 11, 2000



ORIGINAL STAMP IN GREEN

L-2867



REV'D 2-22-00 GMY OK ✓

Lee Surveying and Mapping Co., Inc.

Land Surveys • Topography • Subdivisions • Construction Layout

117 N. Madriver St.
Bellefontaine OH 43311



Phone: (937) 593-7335
Fax: (937) 593-7444

BARGA 136.523 ACRES TRACT C

Lying in Sections 12 and 13, Town 1, Range 8, Pleasant Township, Logan County, Ohio.

Being out of the Charles E. Barga, Trustee original 150.0 acre and 259.05 acre tracts as deeded and described in Official Record 197, Page 85, Tracts I and II of the Logan County Records of Deeds and being more particularly described as follows:

Beginning at a 15 inch square concrete corner post found on the southwest corner of Section 12 and the Huber Rohrer, Trustee under the Rohrer Revocable Living Trust Agreement, original 64.66 acre tract, (O.R. 206, Pg. 117, Tract 2).

THENCE, with the south lines of Section 12 and the said 64.66 acre tract, N 87°-00'-00" E, a distance of 1022.99 feet to a 15 inch square concrete corner post found.

THENCE, with the east line of the said 64.66 acre tract, N 3°-08'-55" W, a distance of 178.78 feet to a 5/8 inch iron rod set.

THENCE, N 86°-51'-58" E, a distance of 1152.69 feet to a 5/8 inch iron rod set at the TRUE POINT OF BEGINNING.

THENCE, N 86°-51'-58" E, a distance of 2016.58 feet to a point on the west edge of water of the Great Miami River, passing a 5/8 inch iron rod set at 1944.78 feet, a railroad spike set on the center-line of Township Road 229 at 1979.80 feet, and a 5/8 inch iron rod set at 2001.80 feet.

THENCE, with the west edge of water of the Great Miami River, the following fifteen (15) courses:

S 33°-24'-46" E, a distance of 44.60 feet to a point.

S 31°-04'-14" E, a distance of 226.67 feet to a point.

S 29°-44'-50" E, a distance of 243.28 feet to a point.

S 21°-01'-13" E, a distance of 180.04 feet to a point referenced by a 3/4 inch iron rod found on center-line station 70 + 57.5 (Logan County Engineers' Field Book 707, Pages 67-70), N 66°-27'-43" W, a distance of 87.33 feet.

S 1°-04'-49" W, a distance of 279.93 feet to a point referenced by a 3/4 inch iron rod found on center-line station 67 + 90.8, N 58°-35'-08" W, a distance of 92.20 feet.

S 17°-04'-16" W, a distance of 127.03 feet to a point.

S 24°-39'-56" W, a distance of 89.49 feet to a point.

S 15°-39'-52" W, a distance of 128.59 feet to a point.

S 4°-34'-36" W, a distance of 263.95 feet to a point.

S 1°-04'-40" E, a distance of 262.73 feet to a point.

S 6°-59'-06" W, a distance of 143.21 feet to a point.

S 13°-38'-57" W, a distance of 122.68 feet to a point referenced by a 3/4 inch iron rod found on center-line station 54 + 75.77, S 30°-39'-30" W, a distance of 164.19 feet.

310 1D-4

Lee Surveying and Mapping Co., Inc.

Land Surveys • Topography • Subdivisions • Construction Layout

117 N. Madriver St.
Bellefontaine OH 43311



Phone: (937) 593-7335
Fax: (937) 593-7444

S 10°-53'-14" W, a distance of 333.97 feet to a point.

S 11°-15'-26" W, a distance of 242.74 feet to a point reference by a 3/4 inch iron rod found on center-line station 49 + 95.5, S 47°-00'-27" W, a distance of 71.76 feet.

S 4°-05'-59" W, a distance of 251.95 feet to a point.


THENCE, with the north line of the Mary E. Barga 76.9 acre tract, (O.R. 316, Pg. 807), S 86°-54'-43" W, a distance of 1872.38 feet to a 5/8 inch iron rod set, passing a 5/8 inch iron rod set at 22.05, a railroad spike set on the center-line of Township Road 229 at 52.35 feet and a 5/8 inch iron rod set at 82.65 feet.

THENCE, N 3°-21'-39" W, a distance of 2817.06 feet to the point of beginning.

Containing 136.523 acres of which 4.014 acres are within the highway right-of-way, 8.724 acres are in Section 12, 127.799 acres are in Section 13 and 1.461 acres are between the highway right-of-way and the river.

The basis for bearings is the south line of Section 12, being N 87°-00'-00" E, and all other bearings are from angles and distances measured in a field survey by Lee Surveying and Mapping Co., Inc. on February 7, 2000.

Description prepared by:


Jeffrey I. Lee
Professional Surveyor 6359
February 11, 2000



ORIGINAL STAMP IN GREEN L-2867

310 10-5

REC'D 2-22-00 SMJ/ALV

Lee Surveying and Mapping Co., Inc.

Land Surveys • Topography • Subdivisions • Construction Layout

117 N. Madriver St.
Bellefontaine OH 43311



Phone: (937) 593-7335
Fax: (937) 593-7444

BARGA 29.493 ACRES TRACT D

Lying in Section 13, Town 1, Range 8, Pleasant Township, Logan County, Ohio.

Being out of the Mary E. Barga original 76.9 acre tract as deeded and described in Official Record 316, Page 807 of the Logan County Records of Deeds and being more particularly described as follows:

Beginning at a 15 inch square concrete corner post found on the southwest corners of Section 12 and the Huber Rohrer, Trustee under the Rohrer Revocable Living Trust Agreement, original 64.66 acre tract, (O.R. 206, Pg. 117, Tract 2).

THENCE, with the west line of Section 13 and the east line of the Mary E. Barga 17.0 acre and 13.0 acre tracts, (O.R. 316, Pg. 807), S 3°-21'-53" E, a distance of 2638.93 feet to a stone found on the center-line of Township Road 75 at station 43 + 13 (Logan County Engineers' Field Book 589, Page 47) at the TRUE POINT OF BEGINNING.

THENCE, with the south line of the northwest quarter of Section 13 and the south line of the Charles E. Barga, Trustee original 259.05 acre tract, (O.R. 197, Pg. 85, Tract II), N 86°-54'-43" E, a distance of 2654.82 feet to a 5/8 inch iron rod set, passing a 5/8 inch iron rod set at 20.00 feet.

THENCE, S 2°-06'-10" E, a distance of 477.13 feet to a 5/8 inch iron rod set.

THENCE, S 86°-34'-05" W, a distance of 2643.14 feet to a railroad spike set, passing a 5/8 inch iron rod set at 2623.09 feet.

THENCE, with the center-line of Township Road 75 (40 feet wide), N 3°-29'-49" W, a distance of 492.95 feet to the point of beginning.

Containing 29.493 acres of which 0.224 acre is within the highway right-of-way.

The basis for bearings is the south line of Section 12 being N 87°-00'-00" E, and all other bearings are from angles and distances measured in a field survey by Lee Surveying and Mapping Co., Inc. on February 7, 2000.

Description prepared by:

Jeffrey I. Lee
Professional Surveyor 6359
February 11, 2000

ORIGINAL STAMP IN GREEN



L-2867

310 1D-6

REV'D 2-22-00 GMM OK ✓
Lee Surveying and Mapping Co., Inc.

Land Surveys • Topography • Subdivisions • Construction Layout

117 N. Madriver St.
Bellefontaine OH 43311



Phone: (937) 593-7335
Fax: (937) 593-7444

**BARGA
29.493 ACRES
TRACT E**

Lying in Section 13, Town 1, Range 8, Pleasant Township, Logan County, Ohio.

Being out of the Mary E. Barga original 76.9 acre tract as deeded and described in Official Record 316, Page 807 of the Logan County Records of Deeds and being more particularly described as follows:

Beginning at a 15 inch square concrete corner post found on the southwest corners of Section 12 and the Huber Rohrer, Trustee under the Rohrer Revocable Living Trust Agreement, original 64.66 acre tract, (O.R. 206, Pg. 117, Tract 2).

THENCE, with the west line of Section 13 and the east line of the Mary E. Barga 17.0 acre and 13.0 acre tracts, (O.R. 316, Pg. 807), S 3°-21'-53" E, a distance of 2638.93 feet to a stone found on the center-line of Township Road 75 at station 43 + 13 (Logan County Engineers' Field Book 589, Page 47).

THENCE, with the west line of Section 13 and the center-line of Township Road 75 (40 feet wide), S 3°-29'-49" E, a distance of 492.95 feet to a railroad spike set at the TRUE POINT OF BEGINNING.

THENCE, N 86°-34'-05" E, a distance of 2643.14 feet to a 5/8 inch iron rod set, passing a 5/8 inch iron rod set at 20.05 feet.

THENCE, S 3°-29'-49" E, a distance of 486.06 feet to a 5/8 inch iron rod set.

THENCE, with the north lines of the Betty Ann Dye original 90.27 acre tract (O.R. 205, Pg. 458) and the James R. Shoe 1.85 acre tract (O.R. 70, Pg. 981), S 86°-34'-05" W, a distance of 2643.14 feet to a MAG nail set, passing a 5/8 inch iron rod set at 2623.09 feet.

THENCE, with the west line of Section 13 and the center-line of Township Road 75, N 3°-29'-49" W, a distance of 486.06 feet the point of beginning.

Containing 29.493 acres of which 0.224 acre is within the highway right-of-way.

The basis for bearings is the south line of Section 12 being N 87°-00'-00" E, and all other bearings are from angles and distances measured in a field survey by Lee Surveying and Mapping Co., Inc. on February 7, 2000.

Description prepared by:

A handwritten signature in black ink, appearing to read 'Jeffrey I. Lee', is written over a faint circular stamp.

Jeffrey I. Lee
Professional Surveyor 6359
February 11, 2000



L-2867

310 1D-7

REC'D 2-22-00 SMJ ok ✓
Lee Surveying and Mapping Co., Inc.

Land Surveys • Topography • Subdivisions • Construction Layout

117 N. Madriver St.
Bellefontaine OH 43311



Phone: (937) 593-7335
Fax: (937) 593-7444

**BARGA
29.493 ACRES
TRACT F**

Lying in Section 13, Town 1, Range 8, Pleasant Township, Logan County, Ohio.

Being out of the Mary E. Barga original 76.9 acre tract as deeded and described in Official Record 316, Page 807 of the Logan County Records of Deeds and being more particularly described as follows:

Beginning at a 15 inch square concrete corner post found on the southwest corner of Section 12 and the Huber Rohrer, Trustee under the Rohrer Revocable Living Trust Agreement, original 64.66 acre tract, (O.R. 206, Pg. 117, Tract 2).

THENCE, with the west line of Section 13 and the east line of the Mary E. Barga 17.0 acre and 13.0 acre tracts, (O.R. 316, Pg. 807), S 3°-21'-53" E, a distance of 2638.93 feet to a stone found on the center-line of Township Road 75 at station 43 + 13 (Logan County Engineers' Field Book 589, Page 47).

THENCE, with the south line of the north half of Section 13 and the south line of the Charles E. Barga, Trustee original 259.05 acre tract (O.R. 197, Pg. 85, Tract II), N 86°-54'-43" E, a distance of 2654.82 feet to a 5/8 inch iron rod set at the TRUE POINT OF BEGINNING, passing a 5/8 inch iron rod set at 20.00 feet.

THENCE, with the south line of the north half of Section 13 and the south line of the said 259.05 acre tract, N 86°-54'-43" E, a distance of 1393.71 feet to a point on the west edge of water of the Great Miami River, passing a 5/8 inch iron rod set at 1311.06 feet, a railroad spike set on the center-line of Township Road 229 at 1341.36 feet and a 5/8 inch iron rod set at 1371.66 feet.

THENCE, with the west edge of water of the Great Miami River, the following six (6) courses:

S 4°-05'-59" W, a distance of 263.64 feet to a point.

S 0°-25'-28" W, a distance of 245.54 feet to a point.

S 5°-53'-30" W, a distance of 152.09 feet to a point.

S 13°-54'-39" W, a distance of 165.17 feet to a point.

S 4°-58'-35" W, a distance of 106.81 feet to a point.

S 21°-15'-23" W, a distance of 38.46 feet to a point.

THENCE, with the north line of the Betty Ann Dye original 90.27 acre tract, (O.R. 205, Pg. 458), S 86°-34'-05" W, a distance of 1247.57 feet to a 5/8 inch iron rod set, passing a 5/8 inch iron rod set at 6.21 feet, a railroad spike set on the center-line of Township Road 229 at 36.53 feet and a 5/8 inch iron rod set at 66.85 feet.

THENCE, N 3°-29'-49" W, a distance of 486.06 feet to a 5/8 inch iron rod set.

THENCE, N 2°-06'-10" W, a distance of 477.13 feet to the point of beginning.

Containing 29.493 acres of which 1.330 acres are within the highway right-of-way and 0.659 acre is between the highway right-of-way and the river.

310 1D-8

Lee Surveying and Mapping Co., Inc.

Land Surveys • Topography • Subdivisions • Construction Layout

117 N. Madriver St.
Bellefontaine OH 43311



Phone: (937) 593-7335
Fax: (937) 593-7444

The basis for bearings is the south line of Section 12 being N 87°-00'-00" E, and all other bearings are from angles and distances measured in a field survey by Lee Surveying and Mapping Co., Inc. on February 7, 2000.

Description prepared by:

A handwritten signature in black ink, appearing to read 'J. Lee', is written over the printed name.

Jeffrey I. Lee
Professional Surveyor 6359
February 11, 2000



ORIGINAL STAMP IN GREEN L-2867

310 1D-9

REC'D 2-24-00 SMM OIL V.

Lee Surveying and Mapping Co., Inc.

Land Surveys • Topography • Subdivisions • Construction Layout

117 N. Madriver St.
Bellefontaine OH 43311



Phone: (937) 593-7335
Fax: (937) 593-7444

BARGA 70 FEET WIDE INGRESS/EGRESS EASEMENT

Lying in Section 13, Town 1, Range 8, Pleasant Township, Logan County, Ohio.

Being an Ingress\Egress easement over the Mary E. Barga original 76.9 acre tract as deeded and described in Official Record 316, Page 807 of the Logan County Records of Deeds and being more particularly described as follows:

Beginning at a stone found on the southwest corner of the northwest quarter of Section 13 at an angle in the center-line of Township Road 75 at center-line Station 43 + 13 (Logan County Engineers Field Book 589, Page 47).

THENCE, with the south lines of the northwest quarter of Section 13 and the Charles E. Barga, Trustee 259.05 acre tract (O.R. 197, Pg. 85, Tract II), N 86°-54'-43" E, a distance of 2176.15 feet to a 5/8 inch iron rod set.

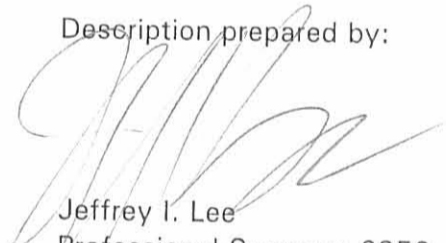
THENCE, S 3°-21'-39" E, a distance of 70.00 feet to a point.

THENCE, parallel to and 70 feet south of the south lines of the northwest quarter of Section 13 and the said 259.05 acre tract, S 86°-54'-43" W, a distance of 2175.99 feet to a point on the center-line of Township Road 75.

THENCE, with the west line of Section 13 and the center-line of Township Road 75, (40 feet wide), N 3°-29'-49" W, a distance of 70.00 feet to the point of beginning.

The basis for bearings is the south line of Section 12 being N 87°-00'-00" E, and all other bearings are from angles and distances measured in a field survey by Lee Surveying and Mapping Co., Inc. on February 7, 2000.

Description prepared by:


Jeffrey I. Lee
Professional Surveyor 6359
February 11, 2000

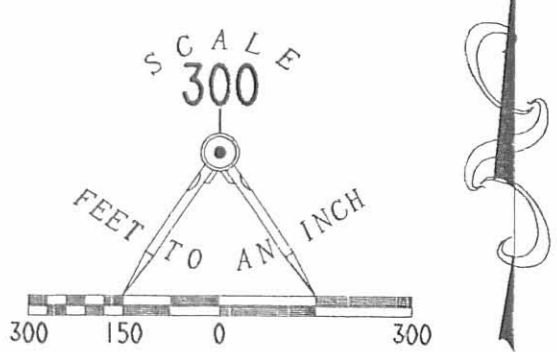


ORIGINAL STAMP IN GREEN
L-2867

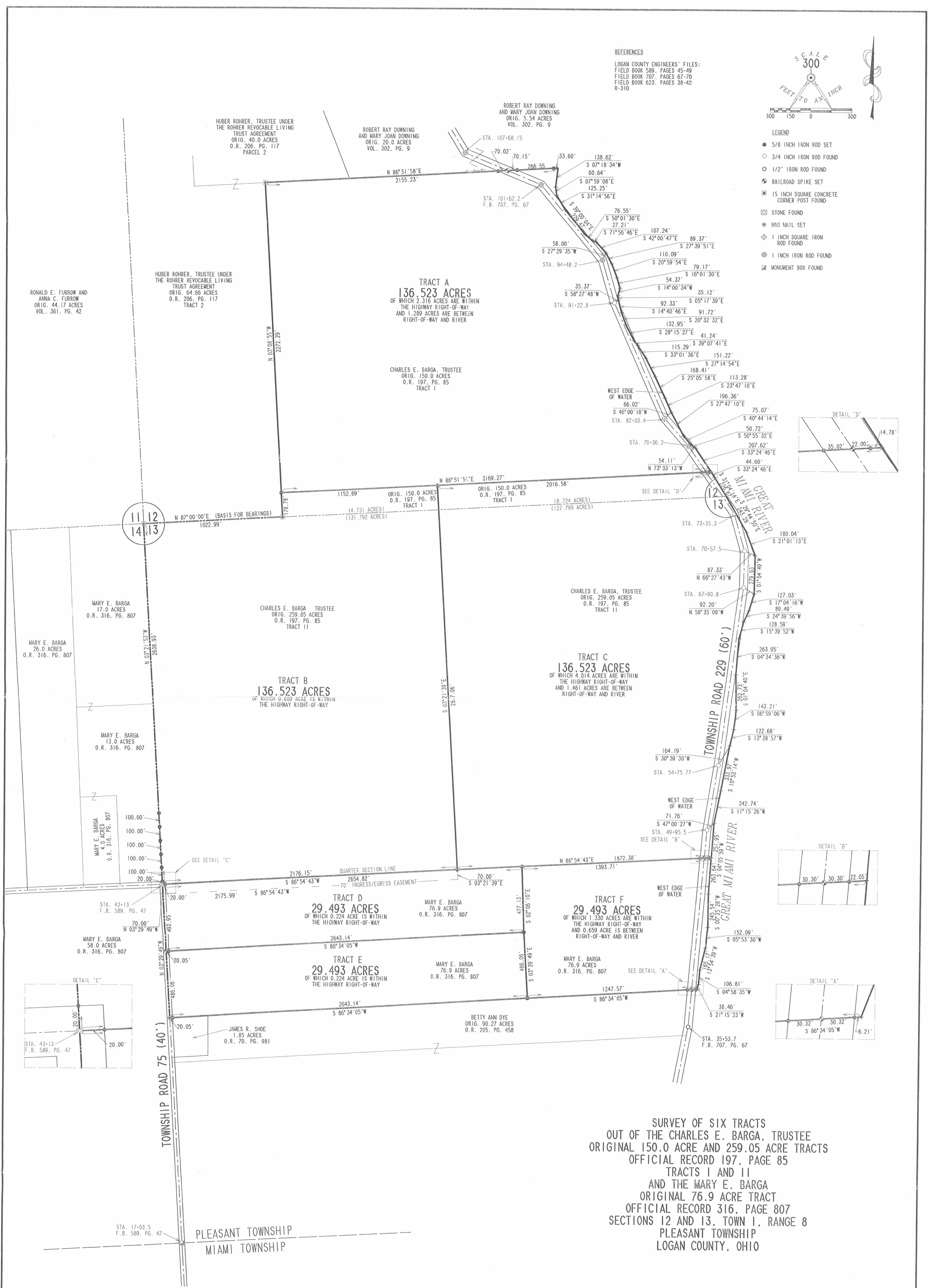
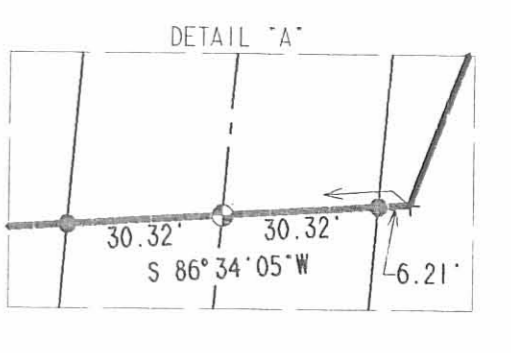
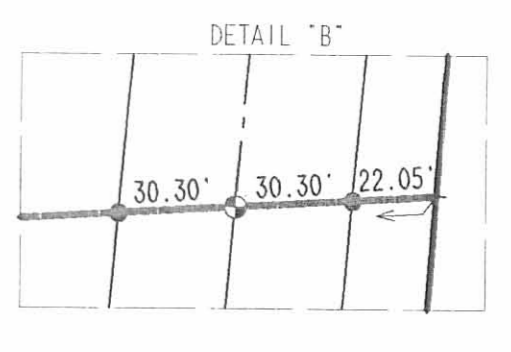
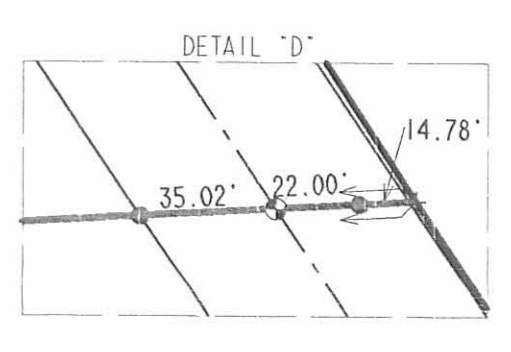
INDEXED ON MAP
310 1D-10

REV'D 2-22-00 SMY/ALV

REFERENCES
LOGAN COUNTY ENGINEERS' FILES:
FIELD BOOK 589, PAGES 45-49
FIELD BOOK 707, PAGES 67-70
FIELD BOOK 623, PAGES 38-42
R-310



- LEGEND
- 5/8 INCH IRON ROD SET
 - 3/4 INCH IRON ROD FOUND
 - 1/2" IRON ROD FOUND
 - ⊙ RAILROAD SPIKE SET
 - 15 INCH SQUARE CONCRETE CORNER POST FOUND
 - ⊠ STONE FOUND
 - ⊙ MAG NAIL SET
 - ⊕ 1 INCH SQUARE IRON ROD FOUND
 - ⊕ 1 INCH IRON ROD FOUND
 - ⊠ MONUMENT BOX FOUND



SURVEY OF SIX TRACTS
OUT OF THE CHARLES E. BARGA, TRUSTEE
ORIGINAL 150.0 ACRE AND 259.05 ACRE TRACTS
OFFICIAL RECORD 197, PAGE 85
TRACTS I AND II
AND THE MARY E. BARGA
ORIGINAL 76.9 ACRE TRACT
OFFICIAL RECORD 316, PAGE 807
SECTIONS 12 AND 13, TOWN 1, RANGE 8
PLEASANT TOWNSHIP
MIAMI TOWNSHIP
LOGAN COUNTY, OHIO



SURVEYED BY:
Jeffrey Lee
JEFFREY L. LEE
PROFESSIONAL SURVEYOR 6359
FEBRUARY 7, 2000
COPYRIGHT 2000 BY:
LEE SURVEYING & MAPPING CO., INC.
117 North Medriver Street
BELLEFONTAINE, OHIO 43311
(937) 593-7335

2 WORKING DAYS
BEFORE YOU DIG
CALL TOLL FREE 800-362-2764
OHIO UTILITIES PROTECTION SERVICE.

INDEXED ON MAP
310 JP

Lee Surveying and Mapping Co., Inc.

Land Surveys • Topography • Subdivisions • Construction Layout

117 N. Madriver St.
Bellefontaine OH 43311



Phone: (937) 593-7335
Fax: (937) 593-7444

ALLEN 6.146 ACRES

Lying in Section 12, Town 1, Range 8, Pleasant Township, Logan County, Ohio.

Being out of the Chester L. Allen original 136.523 acre tract as deeded and described in Official Record 448, Page 623 of the Logan County Records of Deeds and being more particularly described as follows:

Beginning at a 1 inch square iron rod found at center-line station 82 +03.4 of Township Road 229 (Logan County Engineer's Field Book 707, Pages 67-69).

THENCE, with the center-line of Township Road 229 (60 feet wide), N 24°-09'-53" W, a distance of 356.44 feet to a MAG nail set at the TRUE POINT OF BEGINNING.

THENCE, S 88°-00'-47" W, a distance of 578.40 feet to a 5/8 inch iron rod set, passing a 5/8 inch iron rod set at 32.48 feet.

THENCE, N 4°-48'-55" W. a distance of 510.86 feet to a 5/8 inch iron rod set.

THENCE, N 87°-12'-14" E a distance of 426.97 feet to a point on the west edge of the Great Miami River passing a 5/8 inch iron rod set at 361.19 feet, a MAG nail set at 393.40 feet on the center-line of Township Road 229 and a 5/8 inch iron rod set at 412.47 feet.

THENCE, with the west edge of water of the Great Miami River, the following six (6) courses:

S 14°-40'-46" E, a distance of 69.18 feet to a point within the road right-of-way.

S 20°-32'-32" E, a distance of 91.72 feet to a point within the road right-of-way

S 28°-15'-27" E, a distance of 132.95 feet to a point within the road right-of-way

S 39°-07'-41" E, a distance of 41.24 feet to a point.

S 33°-01'-36" E, a distance of 115.29 feet to a point.

S 27°-14'-54" E, a distance of 122.68 feet to a point.

THENCE, S 88°-00'-47" W, a distance of 63.25 feet to the point of beginning, passing a 5/8 inch iron rod set at 33.13 feet.

Containing 6.146 acres of which 0.767 acre is within the road right-of-way.

The basis for bearings is the center-line of Township Road 229 being N 24°-09'-53" W, and all other bearings are from angles and distances measured in a field survey by Lee Surveying and Mapping Co., Inc. on April 14, 2001.

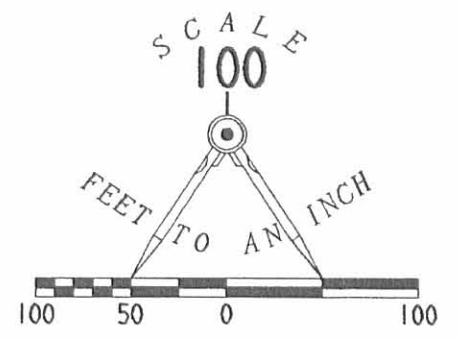
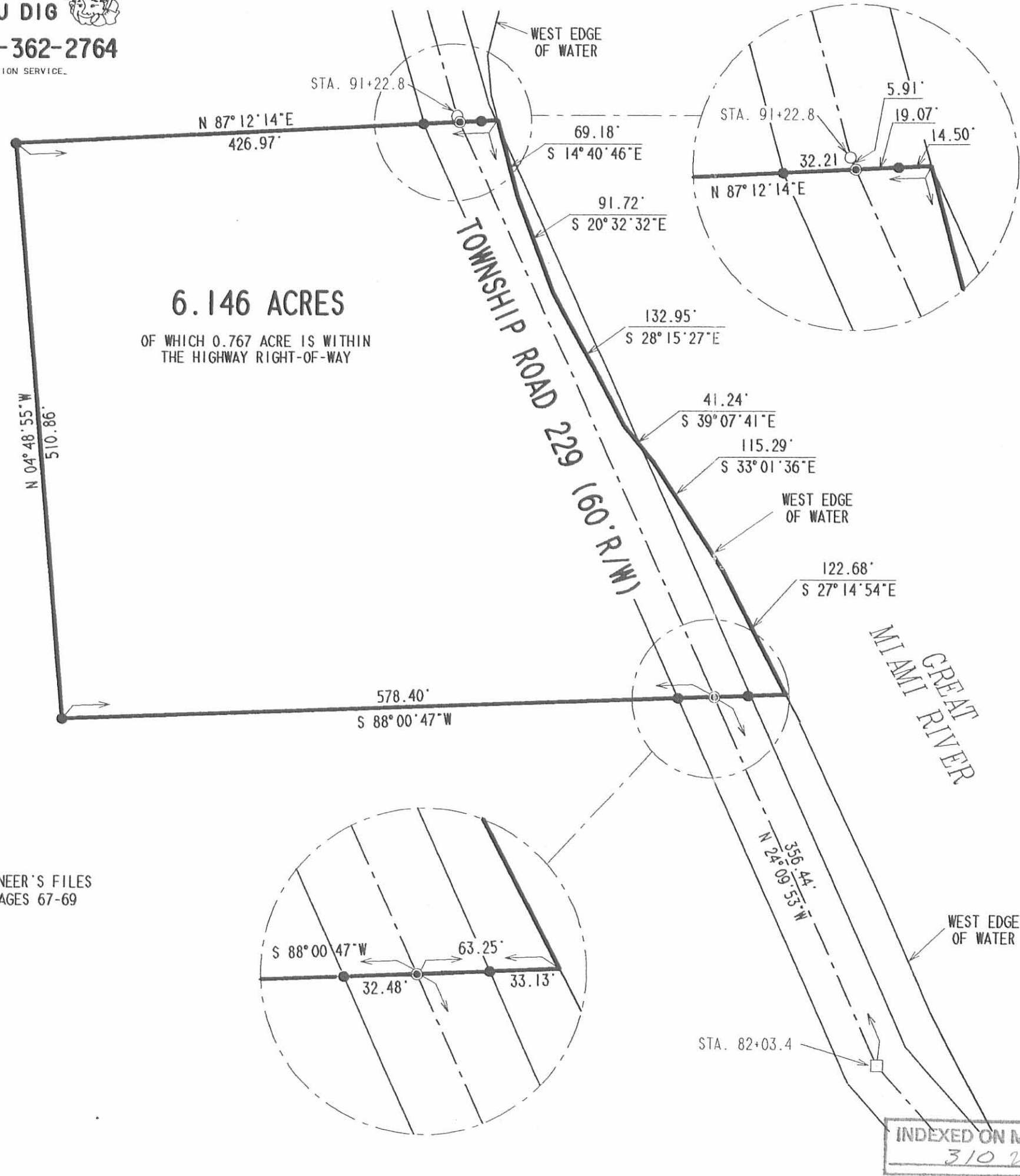
Description prepared by:

Jeffrey J. Lee
Professional Surveyor 6359
April 26, 2001

INDEXED ON MAP
310 20



ORIGINAL STAMP IN GRL-2867



- LEGEND**
- 1 INCH SQUARE IRON ROD FOUND
 - 3/4 INCH IRON ROD FOUND
 - MAG NAIL SET
 - 5/8 INCH IRON ROD SET

**BOUNDARY SURVEY OF A 6.146 ACRE TRACT
 OUT OF THE CHESTER L. ALLEN
 ORIGINAL 136.523 ACRE TRACT
 OFFICIAL RECORD 448, PAGE 623
 SECTION 12, TOWN 1, RANGE 8
 PLEASANT TOWNSHIP
 LOGAN COUNTY, OHIO**

CHESTER L. ALLEN
 ORIG. 136.523 ACRE
 O.R. 448, PAGE 623

REFERENCES:
 LOGAN COUNTY ENGINEER'S FILES
 FIELD BOOK 707, PAGES 67-69

SURVEYED BY:

 JEFFREY I. LEE
 PROFESSIONAL SURVEYOR 6359
 APRIL 16, 2001



COPYRIGHT 2000 BY:
LEE SURVEYING & MAPPING CO., INC.
 117 North Madriver Street
 BELLEFONTAINE, OHIO 43311
 (937) 593-7335

INDEXED ON MAP
 310 2P

Description of One Hundred and Fifty Acres.

(M. L. Rohrer Estate)

The following described land situated in Pleasant Township Logan County, Ohio. being part of Fractional Section 13, T. 1, R. 8, and bounded as follows: commencing at a stone in the South line of said Section 13 at a point 15.51 chains east from a stone at the southwest corner of said section 13.

Thence N. 5' E. parallel with the west line of said ~~13~~, Section 13, 37.20 chains to a stone (4"X 12"X34") and ^epieces of drain ~~tile~~ in the south line of Daniel Rohrer's 19 Acre tract.

Thence with the south line of the said 19 acre tract and with the south line of Harry E. Loffers land S. $89\frac{3}{4}^{\circ}$ E. 30.96 chains to a stake .

Thence down stream with the meanderings of the Miami River , S. $37\frac{3}{4}^{\circ}$ E. 5.17 chains , XXXX Thence S.41 E. 6.15 chains Thence S. $14\frac{1}{4}^{\circ}$ E. 8.83 chains , Thence S. $38\frac{1}{2}^{\circ}$ E. 4.53 chains Thence S. $18\frac{1}{2}^{\circ}$ E. 4.83 chains, Thence S. $38\frac{1}{4}^{\circ}$ E. 4.57 Chains Thence S. $36\frac{1}{2}^{\circ}$ E. 3.63 chains, Thence S. 30 E. 5.42 chains to a stake in the south line of said Section 13 from which a stake on the river bank bears N. $89\frac{3}{4}^{\circ}$ W. 13 links distant , said witness stake being witnessed by a Burr Oak Stump 30 inches in diameter bearing N. 51° W. 14 links distant.

LINE Thence leaving the river channel and running on the Section N. $89\frac{3}{4}^{\circ}$ W. 49.64 chains to the place of beginning containing 150 acres

INDEXED ON MAP

3/0 3D-1

Description of 64.66 Acre Tract.

(M. L. Rohrer Estate)

The following described land situated in Pleasant Township, Logan County, Ohio, being part of Fractional Section 13, T. 1, R. 8, and bounded as follows: commencing at a stone at the southwest corner of said Section 13 from which a White Oak Stump 32 inches in diameter bears ~~Northwest~~ ^{34°W} ~~32~~ ⁴ links distant.

Thence with the west line of said Section N. 5 E. 45.00 chains to the center of the Sidney pike.

Thence with the center of the Sidney Pike N. $69\frac{3}{4}^{\circ}$ E. 8.00 chains to the northwest corner of Daniel Rohrer 19 Acre tract.

Thence with the west line of said 19 acre tract $S\frac{1}{4}^{\circ}$ W. 10.63 chains to a post ^{at} of the southwest corner of said 19 ^{Acre} tract .

Thence with the south line of the said 19 ^{Acre} tract S. $89\frac{3}{4}^{\circ}$ E. 7.95 chains to a stone (4"X13" X 34") and pieces of drain tile.

Thence S. 5 W. 37.20 chains to a stone in the south line of said Section 13.

Thence with the Section line N. $89\frac{3}{4}^{\circ}$ W. 15.51 chains to the place of beginning containing 64.66 Acres.

INDEXED ON MAP
310 3D-2

Description of One Hundred and Fifty Acres.

(M. L. Rohrer Estate)

The following described land situated in Pleasant Township Logan County, Ohio, being part of Fractional Section 13, T. 1, R. 8, and bounded as follows: commencing at a stone in the South line of said Section 13 at a point 15.51 chains east from a stone at the southwest corner of said section 13.

Thence N. 5' E. parallel with the west line of said ~~13~~, Section 13, 37.30 chains to a stone (4"X 12"X24") and piece of drain tile in the south line of Daniel Rohrer's 19 Acre tract.

Thence with the south line of the said 19 acre tract and with the south line of Harry E. Loeffers land S. $89\frac{3}{4}$ E. 30.96 chains to a stake .

Thence down stream with the meanderings of the Miami River , S. $37\frac{3}{4}$ E. 5.17 chains , ~~XXXX~~ Thence S.41 E. 6.15 chains Thence S. $14\frac{1}{4}$ E. 8.82 chains , Thence S. $38\frac{1}{2}$ E. 4.52 chains Thence S. $18\frac{1}{2}$ E. 4.83 chains, Thence S. $38\frac{1}{4}$ E. 4.57 chains Thence S. $36\frac{1}{2}$ E. 3.63 chains, Thence S. 30 E. 5.42 chains to a stake in the south line of said Section 13 from which a stake on the river bank bears N. $89\frac{3}{4}$ W. 13 links distant , said witness stake being witnessed by a Burr Oak Stump 30 inches in diameter bearing N. 51 W. 14 links distant.

LINE Thence leaving the river channel and running on the Section N. $89\frac{3}{4}$ W. 49.64 chains to the place of beginning containing 150 acres.

INDEXED ON MAP
3/0 3D-3

The southwest corner I located by the intersection of the original lines which are well marked.

Running the west line N. cross creek at 13, 16½ + 20 chains respectively, and the State road at 45.00 chains

The south east corner of the 100 acres is 2 leaning willows from the same root = stone in line west 44 links & from the stone a cottonwood tree 48" in diameter is a N. E. direction 18 lks.

Done in presence of Adam Martini, John Hill
Wm Stoutemoyer, Nelson Peck, M L. Poles &
No chainmen

A. J. Knight }
E. J. Wheeler } chainmen

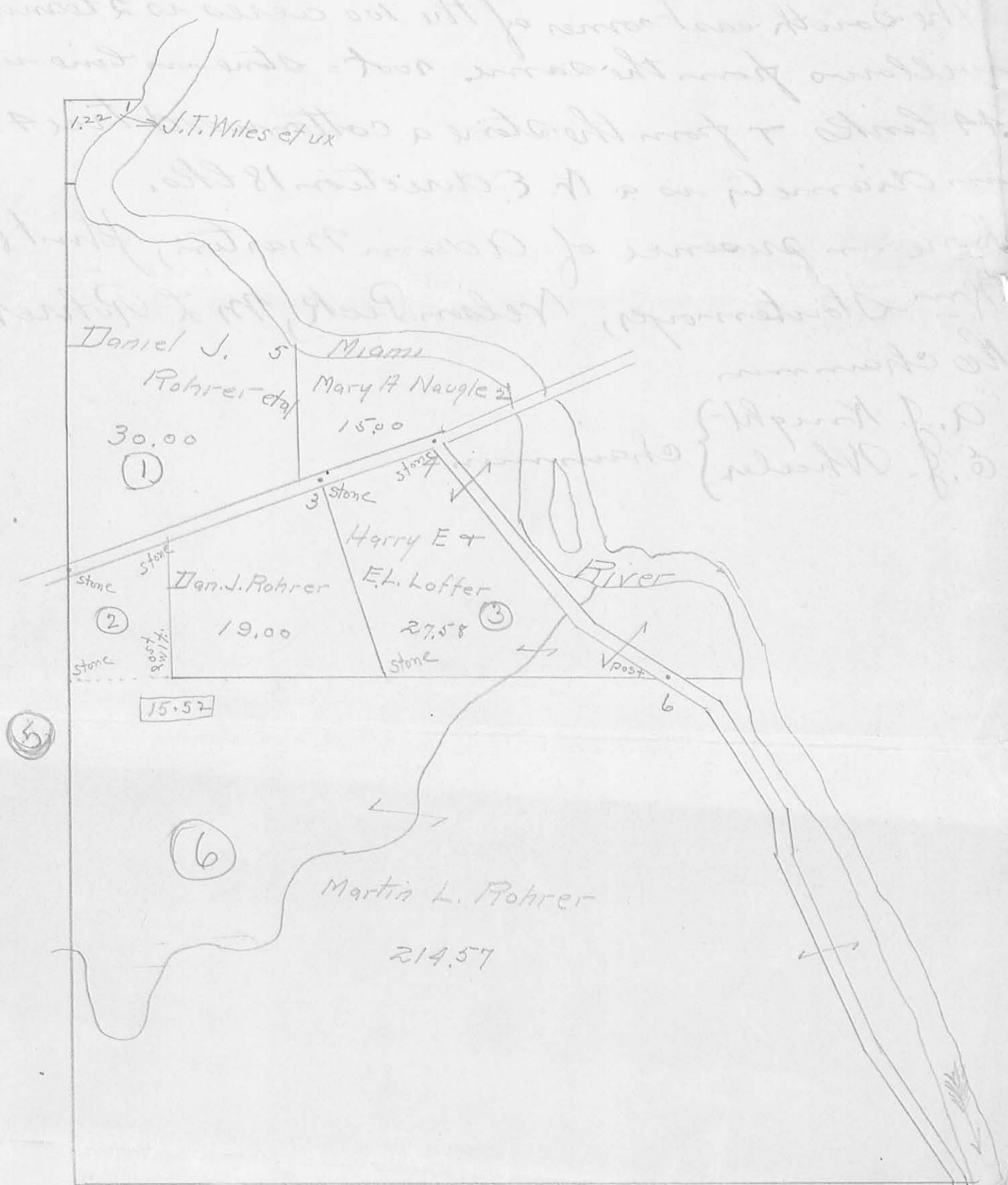
INDEXED ON MAP
310 4D

INDEXED ON MAP
310 4D

Pleasant Township

7

Sec. 12 T. 1 P. 8



INDEXED ON MAP
310 4P

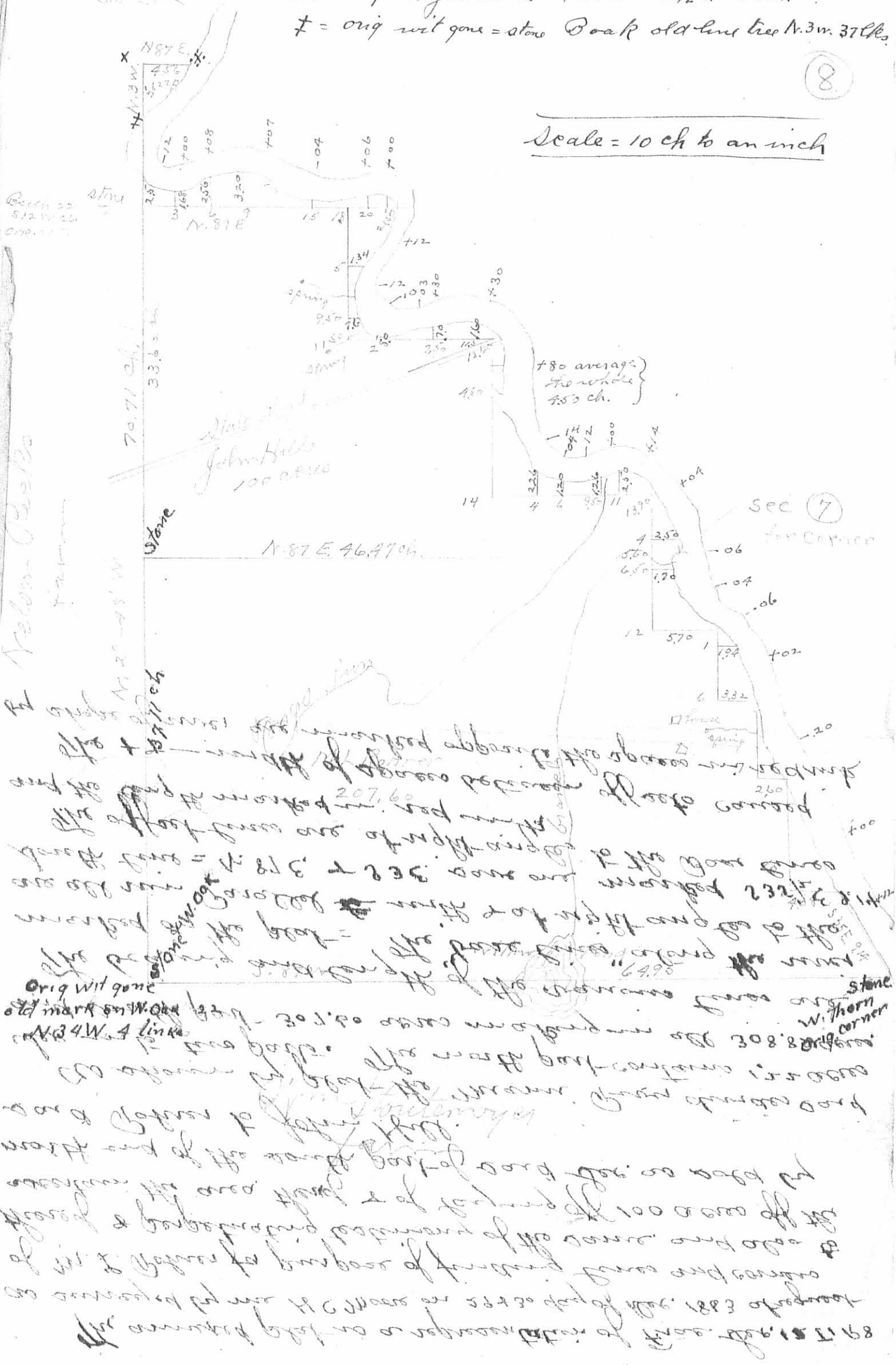
INDEXED ON MAP
310 4P

RECORDED ON MAP
310 5P

X = N.W. corner of Sec. = stone = Elm. (orig wit) 21 S. 24 W. 35 lbs
 † = orig wit gone = stone Willow 5 6 1/2 E. 13 lbs.
 ‡ = orig wit gone = stone Oak old line tree N. 3 W. 37 lbs.

(8)

Scale = 10 ch to an inch



89 T 51 1st 2nd 3rd 4th 5th 6th 7th 8th 9th 10th 11th 12th 13th 14th 15th 16th 17th 18th 19th 20th 21st 22nd 23rd 24th 25th 26th 27th 28th 29th 30th 31st 32nd 33rd 34th 35th 36th 37th 38th 39th 40th 41st 42nd 43rd 44th 45th 46th 47th 48th 49th 50th 51st 52nd 53rd 54th 55th 56th 57th 58th 59th 60th 61st 62nd 63rd 64th 65th 66th 67th 68th 69th 70th 71st 72nd 73rd 74th 75th 76th 77th 78th 79th 80th 81st 82nd 83rd 84th 85th 86th 87th 88th 89th 90th 91st 92nd 93rd 94th 95th 96th 97th 98th 99th 100th

The following real estate being in fractional sect. 12, T. 1, Range 8 east M.M. and bounded and described as follows; beginning at a stone on the S.W. bank of the Great Miami River being at the original N. corner to the S. fractional part of said fractional Sect. from which a beech (orig. Wit) now 23 inches in dia. bears S 12 W 26 links being also in the original W. line of said fractional Sect 1 and about 10 chains S. of the N.W. corner of said Sect; thence with the W. line S 2° 48' E 33.60 chains crossing the Sidney State road at 25.65 chains to a stone; thence parallel with the S. line of the Sect. N 87° E 46.47 chains crossing Young's run at 37.50 chains to 2 willows each about 1 foot in dia. and bearing S. and standing on the W. bank of the said river from which tree a stone in the line west 44 links and from the said stone a cotten wood tree 48 in. dia. bears northwestwardly 18 links distant; thence northwestwardly with the S.W. bank of said river and the meanderings thereof crossing said road to the beginning, containing 100 acres of land.

Beginning at the S.W. corner of said fractional section 12; thence N. with west line of said Sect. N 45 chains to center of state road; thence Northeast with center of said state road 8 chains to a stone; thence S. parallel with west line of said section 10 chains to a stone; thence at right angles with south line of land of H.E. and F. L. Loffe 43 chains to the Miami River, being the the east line of said fractional section; thence southeasterly with the meanderings of said river to the southeast corner of said fractional section; thence with South line of said fractional section west 67 chains to the beginning, containing 214.57 acres

Aerl to Martin L. Roher.

Vol. 32, P 77.

The fractional Section 12 of township 1, range 8 east of the meridian line.

INDEXED ON MAP

310 CD

Survey for Danil J. Rohrer, Exec., Pleasant

Township

Page

1

Lucrecia Martin

to

Danil J. Rohrer et al

Vol. 111 Page 132

Sec. 12 T. 1 R. 8

Date 1911

Surv. _____

Thence

Begin ft. of the N. pt. of S. Frac. ft. of Frac.
Sec. 12 T. 1 R. 8. Begin at a stake in the
W. line of said Frac. Sec. 8 at the S.W. side
of Main being the S.W. L of the said S. Frac.
part of said Frac. Sec.

with the W. line of said Frac. Sec. 12
S. 1/2 E (By Mag. Meridian) 25 89/ ch to
center of B. & S. pipe.

with the center line of said pipe N. 69 E.
16 84/ ch to a stake

N. 12 1/4 W. 21 06/ ch to a stake at the S.
side of said river

westwardly with south side of said
river with meanderings to begin

30 acres

INDEXED ON MAP
310 7D-1

Survey for D. Rohrer

Pleasant

Township

Page
2

Henry Sidle
to

Vol. 62 Page 232

Sec. 12 T. 1 R. 8

Martin L. Rohrer

Date 1881

Surv.

Thence

Being Pt 4th sec. Sec. 12

Begin at S. W. c of 55 acres sold by John
Kell to David Murray at a stone in the W.
line of said sec.

— N. 7 chains 94 lbs. to stone in center
of State road.

— With said road N. $69\frac{3}{4}$ E 8 ch to stone.

— S 10 ch. 58 lbs to post Wit: 10" red
oak N. $83\frac{3}{4}$ E. $23\frac{3}{4}$ lbs. & Hickory 10"
in dia. 18° forty lbs. west to place
of beginning containing
6.97 acres

INDEXED ON MAP
310 7D-2

Survey for Dan. Rohrer, Pleasant

Township

Page

3

Geo. C. Dangle et ux
to

Vol. 103 Page 314

Sec. 12 T. 1 R. 8

Harry E. Laffer et ux

Date 1906

Surv.

Thence

Pt Sec. 12

Begin at stone in B. & D. Pike where
the river road intersects said pike
with said pike S. 69 W. 7 ch 67 lbs to
stone at the N. E. \swarrow of Daniel Rohrer
19 acres

S 21° 15.95 ch to a stone on the N. line
of M. L. Rohrer's land.

with said line E. 17.49 ch to a post
in the said river road

with said road N. 29 W. 6.42 ch to a
stone on the rt bank of Miami
river with the meanderings to the
S. part of a piece of land formerly
owned by Wm. Harris

INDEXED ON MAP

310 4D-3

Thence with said line N. 43 $\frac{1}{2}$ W.
9.64 ch to beginning

20 acres more or less.

also. Pt Sec. 12

Begin at a stake on the W. bank of the
Miami river at a point where the

B & S. pike crosses said river

- with said road by true meridian S. 60 W

5.75 ch

- S. 43 $\frac{1}{2}$ E. 6.00 ch to stone

- N. 58 $\frac{1}{2}$ E. 1.50 ch to W. bank of river

- with meanderings to begin.

204 acres

INDEXED ON MAP

310 7D-4

Survey for David Rolner

Pleasant

Township

4

Saml E Miles et ux

Vol. 110 Page 70

Sec. 11 T. 1 R. 8

to
Martha Jane Miles

Date 1910

Surv. _____

Thence

Undivided $\frac{1}{5}$ of following:

PT N. E. qr. Sec. 11

Begin at a stone in a road N. E. \perp to said
Sec. 11

- S 88 W. 25.13 ch to a stone N. W. \swarrow

See. Andra.

- S. $\frac{1}{2}$ E. 40.09 ch crossing branch to
a stone in N. line of Henry Young.

- N. 88 $\frac{1}{2}$ E. 11 ch. to a stake in S.
side of B. & D. pipe

- with the south side of said pipe

N. 72 E. 41.58 ch to a stone N. E.

\perp to C. Potentilla

- N. $\frac{1}{2}$ W. with east line of said

INDEXED ON MAP
310 70.5

section 36.80 ch crossing the Miami
to beginning 92.20 acres

INDEXED ON MAP
310 7D-6

Survey for David J. Rohrer, Pleasant Township Page 5

M. L. Rohrer
to

Vol. 92 Page 407

Sec. _____ T. _____ R. _____

Mary Jane Baegelman

Date 1899

Surv. _____

Thence

Pt Sec. 11

Begin at stone at S. E. v Sec. 11

— with S. line said Sec. 11 N. $89^{\frac{3}{4}}$ W.
41 rds to stone

— N. $\frac{1}{4}$ W. $165^{\frac{8}{10}}$ rds to stone in S. side of
B. & S. pipe

— with the south side of pipe N. $73^{\frac{1}{4}}$ E
42.92 rds to stone in East line of
said Sec.

— with said section line S. $\frac{1}{4}$ E 178.28
rds to begin

44¹⁷ acres

INDEXED ON MAP
310 7D-7

2

Sec 1

487

g.

y⁶⁰

f.

h.

71.00

11

12

20

64.85

H.

Sec. 13

- H. = Thorn 5" corner tree
- g. = willow 10" N. 62 E. dist 19
- f. = Elm 20" N. 51 E. " 36
- h. = { Beech 12" S 12 W. " 26
- { Hickory 8" N. 76 W. " 29

INDEXED ON MAP
310 EP

stone

Hannah Moore
139.18

Stone
2 brick bats

Sarah J Vankirk
120.00

19.12

stone
2 bats

61.00

John Moore
76.90

stone
9 lks
from water
wit:
48" Elm
S.E. 16 lks

INDEXED ON MAP
310 9P

ROHRER SURVEY

1915

Daniel Rohrer Flag.

Sherman Rohrer ch. cr.

Elmer Stahler ch. cr.

John Stahler axe

Searching records 5 hrs

Survey 1 day

Livery 2.00

310

ROHRER SURVEY

LINE A
W. LINE FRAC. SEC. 12

Found a stone at S.W. L Sec 12
Wit: 22" W. Oak stump N34W 4 lks
Random line N 1/2 E N 1/2 E.

37.20 ch. to L stone S.W. L
Sidell 6.97A and S.W. L 100 Acres

Random line came out 27 lks E of
L stone S.W. L 6.97A O.K. CSE N 5'E
45.03 ch to center gravel of Sidney
Pike.

0.

3/4, 1915.

21

LINE B

With center of pike

8.00 ch.

N. 69 3/4 E.

N. 69 3/4 E.

LINE C

WITH W. LINE DANL ROHRERS

19 ACRES

S. 1/4 W. With fence S 1/4 W.

10.62 to post S.W. Corner 19 A.

310

LINE D

S. LINE 6.97 ACRES

N. $89\frac{3}{4}$ WN. $89\frac{3}{4}$ W

7.56 ch From post to L stone

LINE E

WITH S. LINE Danl Roberts 19 A.

17.36 ch to post S.E. L 19 A.

and S.W. Cor. H. E. Loffer

Offset 10' S. of stone at S.W.
 L 6.97 Acres and 10' S. of post at
 Loffers S.W. cor.

Marked into line between these points
 and found S.W. Cor. of D. Roberts
 19 A. in this line

Produced this line east.

S. $89\frac{3}{4}$ ES. $89\frac{3}{4}$ E

38.91 ch. Set stake for corner

No stone or wit: trees left.
 as called for by H. C. Moores
 Survey Record.

Channel changed and deposited on
 West side.

40.28 to waters edge.

O. K. Dist: = 38.91

310

LINE F
WITH water edge of river
5.17
S. 27 $\frac{3}{4}$ E

LINE G
S. 41 E
6.15

LINE H
S 14 $\frac{1}{4}$ E S 14 $\frac{1}{4}$ E
8.82 ch

LINE I
4.52
S. 28 $\frac{1}{2}$ E S 28 $\frac{1}{2}$ E

LINE J
4.83
S. 18 $\frac{1}{2}$ E S. 18 $\frac{1}{2}$ E

LINE L
S. 28 $\frac{1}{4}$ E. S. 28 $\frac{1}{4}$ E
4.57

LINE M
S. 36 $\frac{1}{2}$ E. S. 36 $\frac{1}{2}$ E
2.63

LINE N.
S. 30 E. S. 30 E
5.42

Thorn tree gone

Located S. Line farm by
fence posts.

D. Rohrer says fence was built
by Mat. Wolf on South assisted by
Martin Rohrer.
Drove stake on S. Line 13 lxs
W. of waters edge.
Wit: to stake
old 30" Burr Oak Stump
N 51 W 14 lxs

310

LINE 0
Random Line

Offset 7' N. of stake at river
commenced chaining from water edge
Random N. $89\frac{1}{2}^{\circ}$ W N $89\frac{1}{2}^{\circ}$ W
N $89\frac{1}{2}^{\circ}$ W N $89\frac{1}{2}^{\circ}$ W

Set stake at 50.00

offset 3" S.

O.K. Dist 65.15

Random came out 22 feet
N. of stake at S.W. Sec. 12

O.K. Cse. N $89^{\circ}45'$ W.
Total Northing = 15 feet
Correction at 50 = $11.5' + 7' = 18.5'$
Move stake south 18.5'

Total Acreage = 214.67

214.66
150.00

64.66 to be cut off west
side.

64.66 - 696 = 57.70

57.70 = 577 sq ch

37.20) 577.00 115.510 ch. from
3720
20500 West line
18600 and parallel with
19000 West line.
18600
4000
3720
2800

see next page

310

Ran Dividing Line cutting
off 150 acres on E. side.
Chained 15.51 ch E. from Stone
S. W. - Sec. 12

Chained 15.51 ch E. from
stone in W. Line Sec. 12 and
37.20 ch N. of S.W. L of Sec. 12

Ran dividing line between
these points.

At South end set stone ^{boulder} for
corner about 12" N. of wire fence.

At N. end set boulder 4" x 12"
x 24" pointed, with pieces
broken tile in fence line.

O.K. csc N 5' E

O.K. Dist: = 37.20 ch

310

8-18-14

Lee Surveying and Mapping Co., Inc.



Land Surveys • Topography • Subdivisions • Construction Layout

117 N. Madriver St.
Bellefontaine OH 43311



Phone: (937) 593-7335
Fax: (937) 593-7444
surveys@lsminc.us

ALLEN 48.452 ACRES

Lying in Section 13, Town 1, Range 8, Pleasant Township, Logan County, Ohio.

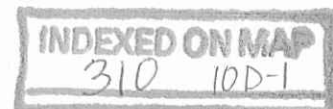
Being out of the Shirley Ann Allen 76.9 acre tract as deeded and described in Official Record 1113, Page 469, Tract III of the Logan County Records of Deeds and being more particularly described as follows:

Beginning on a stone found on the west line of Section 13 on an angle point on the center-line of Township Road 75 at Station 43+31 (Logan County Engineer's Field Book 589, Page 47).

THENCE, with the south line of the Andrew W. Allen 135.523 acre tract (O.R. 551, Pg. 746), N 86°-54'-43"E, a distance of 2176.15 feet to a 5/8 inch iron rod set, passing a 5/8 inch iron rod set at 20.00 feet.

THENCE, S 02°-48'-29"E, a distance of 965.99 feet to a 5/8 inch iron rod set with plastic I.D. cap stamped "LSM 7437."

THENCE, with the north lines of the Jonas J. Wagler etal, 49.745 acre tract (O.R. 893, Pg. 990) and the James R. Shoe 9.993 acre tract and 1.85 acre tract (O.R. 646, Pg. 49 and O.R. 70, Pg. 891), S 86°-34'-05"W, a distance of 2164.48 feet to a MAG nail set on the west line of Section 13 and the center-line of Township Road 75, passing a 5/8 inch iron rod set at 2144.43 feet.



Lee Surveying and Mapping Co., Inc.

Land Surveys • Topography • Subdivisions • Construction Layout

117 N. Madriver St.
Bellefontaine OH 43311



Phone: (937) 593-7335
Fax: (937) 593-7444
surveys@lsminc.us

THENCE, with the west line of Section 13 and the center-line of Township Road 75 (40 feet wide), N 03°-29'-49"W, a distance of 979.00 feet to the point of beginning.

Containing 48.452 acres, of which 0.449 acre is within the highway right-of-way.

Property is subject to any and all previous easements and rights-of-way of record.

The basis for bearings is the west line of Section 13, being N 03°-29'-49"W, and all other bearings are from angles and distances measured in a field survey by Lee Surveying and Mapping Co., Inc. on February 7, 2000 and again on August 1, 2014.



ORIGINAL STAMP IN GREEN

Description prepared by:

A handwritten signature in black ink that reads 'William K. Bruce'.

William K. Bruce
Professional Surveyor 7437
August 1, 2014

28670714



B-18-14

Lee Surveying and Mapping Co., Inc.



Land Surveys • Topography • Subdivisions • Construction Layout

117 N. Madriver St.
Bellefontaine OH 43311



Phone: (937) 593-7335
Fax: (937) 593-7444
surveys@lsminc.us

ALLEN 40.026 ACRES

Lying in Section 13, Town 1, Range 8, Pleasant Township, Logan County, Ohio.

Being out of the Shirley Ann Allen 76.9 acre tract as deeded and described in Official Record 1113, Page 469, Tract III of the Logan County Records of Deeds and being more particularly described as follows:

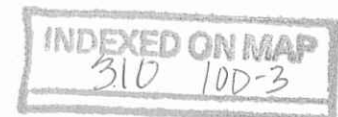
Commencing on a stone found on the west line of Section 13 on an angle point on the center-line of Township Road 75 at Station 43 + 31 (Logan County Engineer's Field Book 589, Page 47).

THENCE, with the south line of the Andrew W. Allen 135.523 acre tract (O.R. 551, Pg. 746), N 86°-54'-43"E, a distance of 2176.15 feet to a 5/8 inch iron rod set at the TRUE POINT OF BEGINNING, passing a 5/8 inch iron rod set at 20.00 feet.

THENCE, with the south line of the Becky S. Berger 136.523 acre tract (O.R. 551, Pg. 748), N 86°-54'-43"E, a distance of 1872.38 feet to a point on the west edge of the water of the Great Miami River, passing a 5/8 inch iron rod set at 1789.73 feet, a railroad spike set on the center-line of Township Road 229 (60 feet wide) at 1820.03 feet and a 5/8 inch iron rod set at 1850.33 feet.

THENCE, with the west edge of the water of the Great Miami River, the following six courses:

- S 04°-05'-59"W, a distance of 263.64 feet to a point.
- S 00°-25'-28"W, a distance of 245.54 feet to a point.
- S 05°-53'-30"W, a distance of 152.09 feet to a point.
- S 13°-54'-39"W, a distance of 165.17 feet to a point.
- S 04°-58'-35"W, a distance of 106.81 feet to a point.
- S 21°-15'-23"W, a distance of 38.46 feet to a point.



Lee Surveying and Mapping Co., Inc.

Land Surveys • Topography • Subdivisions • Construction Layout

117 N. Madriver St.
Bellefontaine OH 43311



Phone: (937) 593-7335
Fax: (937) 593-7444
surveys@lsminc.us

THENCE, with the north lines of the Jonas J. Wagler et al, 11.180 acre tract and 49.745 acre tract (O.R. 1119, Pg. 255, Tract I and O.R. 893, Pg. 990), S 86°-34'-05"W, a distance of 1726.23 feet to a 5/8 inch iron rod set with plastic I.D. cap stamped "LSM 7437", passing a 5/8 inch iron rod set at 6.21 feet, a railroad spike set on the center-line of Township Road 229 at 36.53 feet and a 5/8 inch iron rod set at 66.85 feet.

THENCE, N 02°-48'-29"W, a distance of 965.99 feet to the point of beginning.

Containing 40.026 acres, of which 1.330 acres are within the highway right-of-way.

Property is subject to any and all previous easements and rights-of-way of record.

The basis for bearings is the west line of Section 13, being N 03°-29'-49"W, and all other bearings are from angles and distances measured in a field survey by Lee Surveying and Mapping Co., Inc. on February 7, 2000 and again on August 1, 2014.



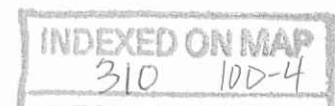
ORIGINAL STAMP IN GREEN

Description prepared by:

A handwritten signature in black ink that reads "William K. Bruce".

William K. Bruce
Professional Surveyor 7437
August 1, 2014

28670714



8-18-14

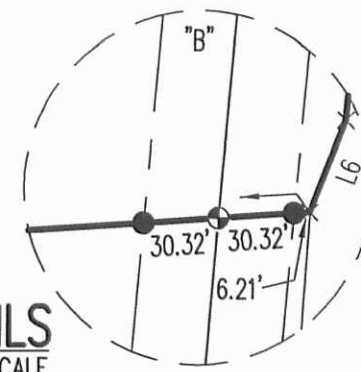
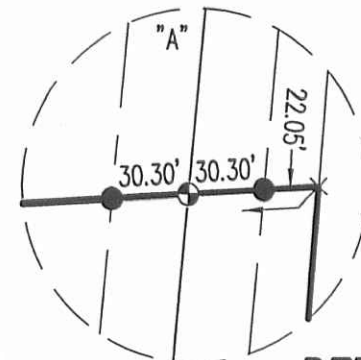
APPROVED

LINE	BEARING	DISTANCE
L1	S 04°05'59" W	263.64'
L2	S 00°25'28" W	245.54'
L3	S 05°53'30" W	152.09'
L4	S 13°54'39" W	165.17'
L5	S 04°58'35" W	106.81'
L6	S 21°15'23" W	38.46'

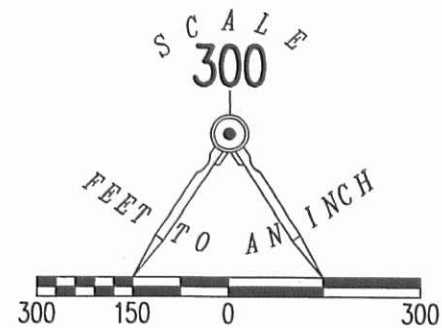
LEGEND:

- ☒ STONE FOUND
- ⊕ RAILROAD SPIKE SET
- 3/4 INCH IRON ROD FOUND
- ⊗ 1/2 INCH IRON ROD FOUND
- MAG NAIL SET
- 5/8 INCH IRON ROD SET
- ⊙ 5/8 INCH IRON ROD SET WITH PLASTIC I.D. CAP STAMPED "LSM 7437"

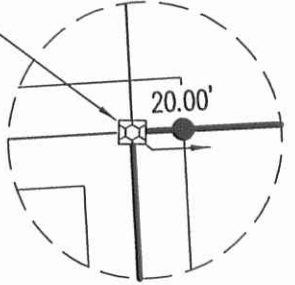
ANDREW W. ALLEN
136.523 ACRES
O.R. 551, PG. 746



DETAILS
NOT TO SCALE



STATION 43+31
LOGAN COUNTY ENGINEER'S
FIELD BOOK 589, PG. 47



BECKY S. BERGER
136.523 ACRES
O.R. 551, PG. 748

STATION 49+95.5
LOGAN COUNTY ENGINEER'S
FIELD BOOK 707, PG. 67

WEST EDGE
OF WATER

SEE
DETAIL "A"

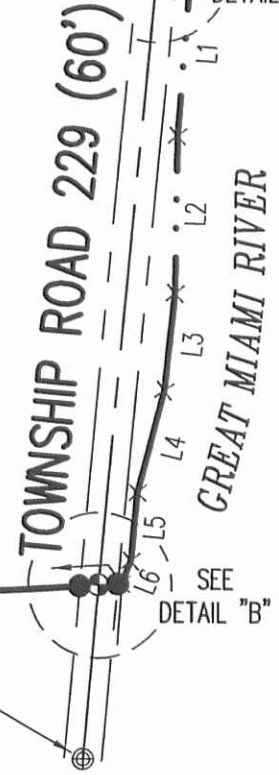
N 86°54'43" E
2176.15'

N 86°54'43" E
1872.38'

48.452 ACRES
OF WHICH 0.449 ACRE IS WITHIN
THE HIGHWAY RIGHT-OF-WAY

40.026 ACRES
OF WHICH 1.330 ACRES ARE WITHIN
THE HIGHWAY RIGHT-OF-WAY

S 02°48'29" E
965.99'



SEE
DETAIL "B"

2164.48'
S 86°34'05" W

1726.23'
S 86°34'05" W

JAMES R. SHOE
1.85 ACRES
O.R. 70, PG. 891

JAMES R. SHOE
9.993 ACRES
O.R. 646, PG. 49

JONAS J. WAGLER ETAL
49.745 ACRES
O.R. 893, PG. 990

JONAS J. WAGLER ETAL
11.180 ACRES
O.R. 1119, PG. 255
TRACT I

STATION 35+53.7
LOGAN COUNTY ENGINEER'S
FIELD BOOK 707, PG. 67

SURVEYED BY:

William K. Bruce

WILLIAM K. BRUCE
PROFESSIONAL SURVEYOR 7437
FEBRUARY 7, 2000
REVISED AUGUST 1, 2014



ORIGINAL STAMP IN GREEN

COPYRIGHT 2014 BY:
LEE SURVEYING & MAPPING CO., INC.
117 North Madriver Street
BELLEFONTAINE, OHIO 43311
(937) 593-7335
WWW.LSMINC.US
surveys@lsminc.us

KSS D0714 28670714 L-2867-3

**SURVEY OF TWO TRACTS OUT OF THE
SHIRLEY ANN ALLEN
76.9 ACRE TRACT
OFFICIAL RECORD 1113, PAGE 469
TRACT III
SECTION 13, TOWN 1, RANGE 8
PLEASANT TOWNSHIP
LOGAN COUNTY, OHIO**

SECTION 14 SECTION 13
N 03°29'49" W
979.00'
TOWNSHIP ROAD 75 (40')

2 WORKING DAYS
BEFORE YOU DIG
CALL TOLL FREE 800-362-2764
OHIO UTILITIES PROTECTION SERVICE

INDEXED ON MAP
310 10P