

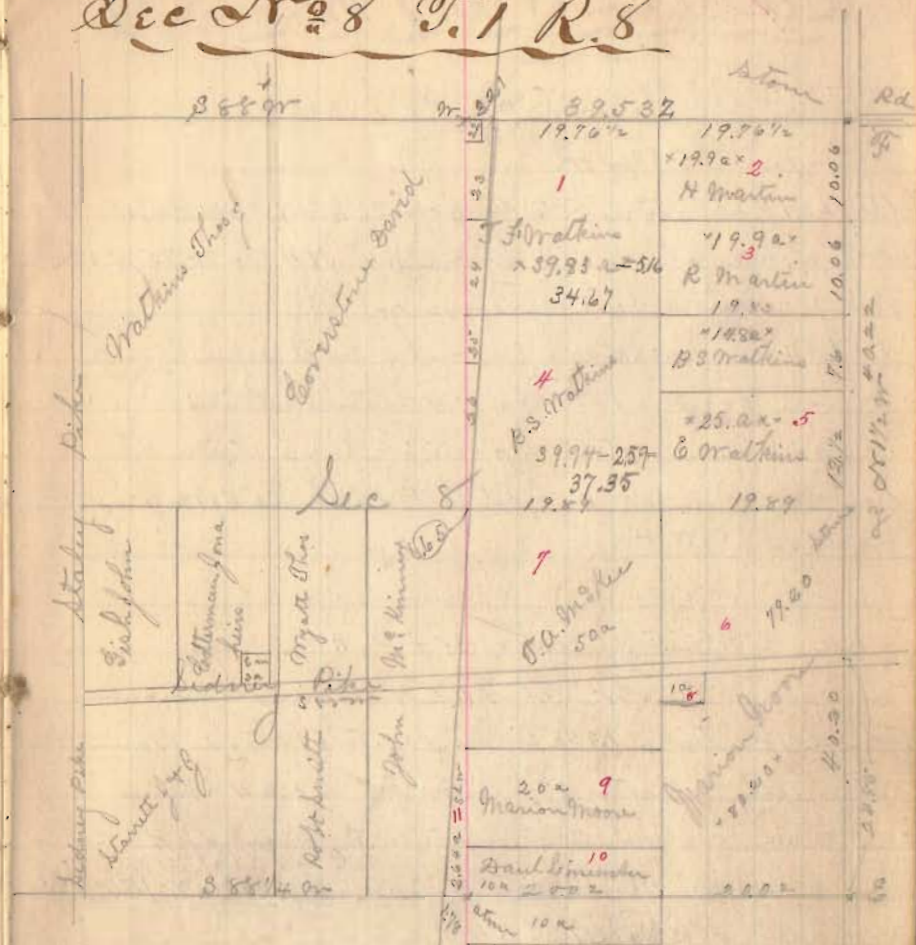
Dec No 8 T.1 R.8 Shelby Co.

Line a. Start at E corner with Road N 1/2 W  
 at 24.85 chains center kidney spike pins S 85 W  
 40.20 chains stone = 2 = 1 known & Watkins  
 Pass 2 links west of stone  
 A line set between E corner & A Watkins  
 60.30 chains < stone B S Watkins = R Martin  
 Pass 1 link W of < stone W 5 M at 60.31 chains  
 at 70.43 ch fence between R Martin & N Martin  
 fence not on line R Martin H has 20 acres  
 at 80.42 chains < stone N 2 x Sec 8. kidney spike  
 < stone 3 links, at Road corner

Line B.

S 7 1/2 W true course = 38 1/2 W  
 at 19.79 ch stone 20 links south of < stone  
 at 39.53 ch stone 41 links south of stone  
 at < W  
 Set stake for E line at W W < S F Watkins  
 at 197.6 1/2 ch from N 2 x Sec 8 and 2 1/2 links East  
 < stone pointed by H Moore 1/2 = 1/2  
 W 1/2 = 2, brown ash 10' S 3 3/4 W 40 links  
 also say 10' N 3 1/2 W 48 1/2 links  
 Set monument at corner 7 as outlined above  
 N side S. S. T. 1. R. 8 S side S. 8. 1844, E side top Waick Shelby

Dec No 8 T.1 R.8



- N 22 = Avenue Jesse .50 a (Buildings on Watkins land 15.00)
- " 23 = Pampel SW 5.00 "
- " 24 = Groves S.E. 3.50 "
- " 25 = Honnell E.R. 1.00 "
- " 26 = Pampel SW 4.00 "
- " 11 = Winget S.L. 2.64 "

341