

Sec No 5 T.1 R.8 Shelby Co

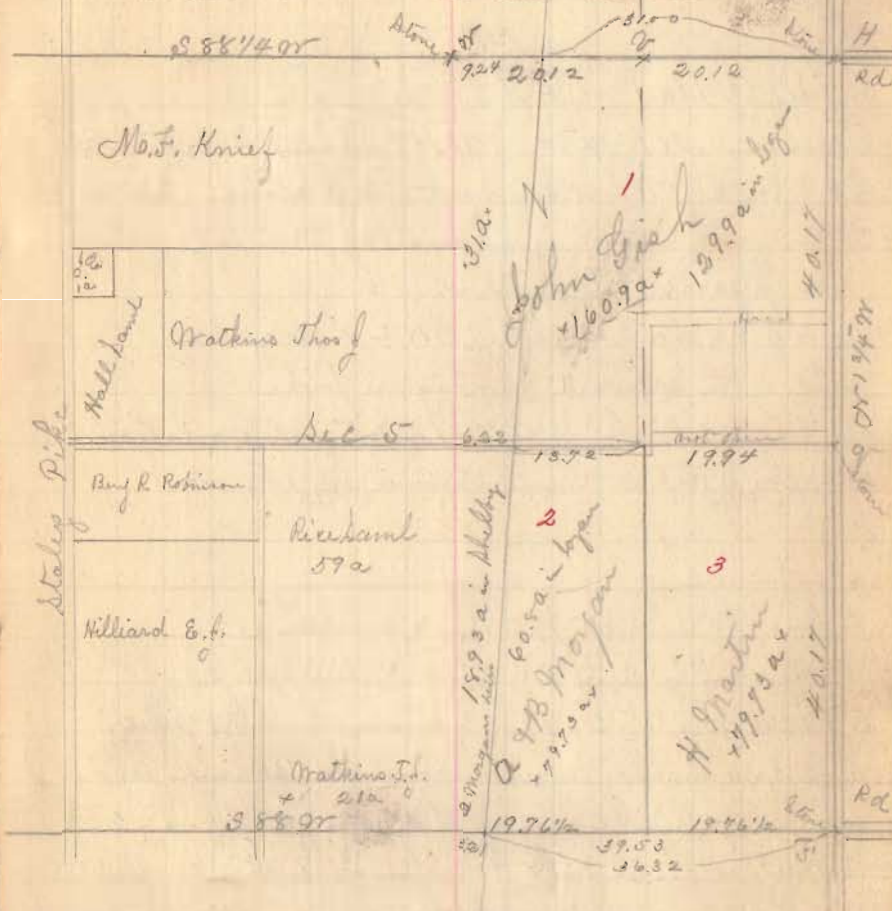
Line A, Start at S.E. < Sec 5
 Then on N 1 3/4 or
 At 40.17 ch stone S.E. < John Bish on S side road
 Wit above stone g = S 49° 1/4 W 75 1/4 lbs
 Pass 1 1/2 links east of stone g
 at 54 1/2 chains road west, and John Bish
 house west 15 ch & south 3 links
 at 80.34 chains stone S.H. = N 2° = Sec 5 stone 3 links
 west of < stone at H, Wit H Red Oak 26" S 8 1/4 W 6 3/4 lbs
 Road east at H

Line B Start 15 links N of < H
 Then on S 88 1/4 W at 40.24 chains < stone
 at < or strike 13 1/2 links N of stone variation
 to much south 1 1/2 links in 40.24 chains
 Set stake for county line at 20.12 west of H = < or
 Round Red Elm stand Wit W ash 20" S 68 1/4 W 15 6 1/4 lbs
 also Jack Oak 12" S 45 1/2 E 42 3/4 links

Set Monument at corner or = see above for out
 or side { S. 32. 5. 2. } S side Sec 5, T.1, R.8.
 R. 8 1884

East Boyan West Shelby

Sec No 5 T.1 R.8



Road on Bish runs above as marked not on the lower line

342