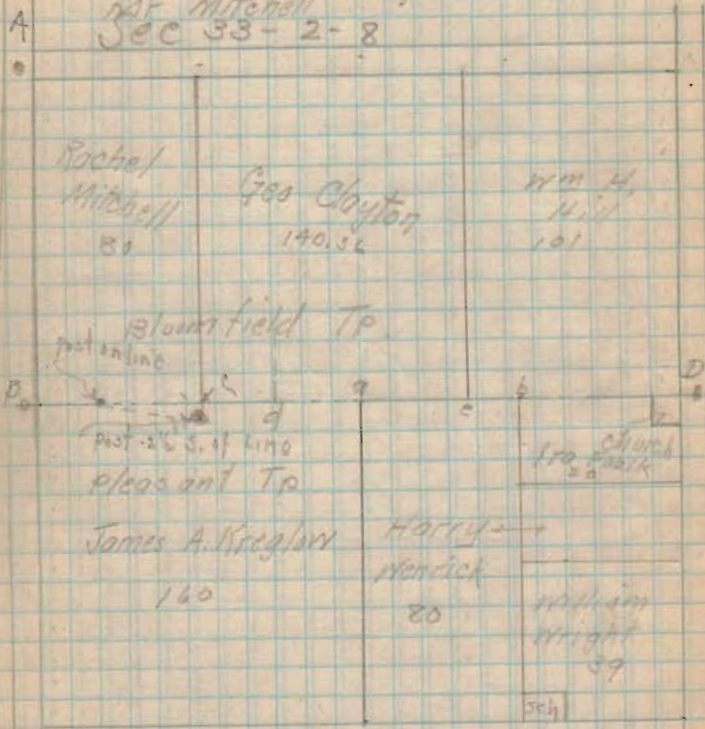


4/29/14

Survey for James A. Kreglow

Jeff. Wright
 James Kreglow } assist.
 Mrs. Hall
 Nat. Mitchell
 Sec 33-2-8



981
 INDEXED ON MAP

C

Stone at A, B, C, D.
 off set 15' south of stone at B.
 Random Line from B to D.
 Random " 22.6' south of stone D.
 Fall $29 = 7.6$

- " at Kreglow's $\angle = 1/2 \times 7.6 = 3.8' = .8'$ Not anchor post
- " at Henrick's $\angle = 3/4 \times 7.6 = 5.7'$
- " " d = (1/2 \times 7.6) = $1/2(100 + 3.8) = 2.25'$
- " at Mitchell's $\angle = 1/2 \times 7.6 = 1.9' = 2"$ Not anchor post
- " at Hill's $\angle = 1/2 \times 7.6 = 4.27'$