

Road 78 Pleasant Tap

40' Road 34 To Road 23

Commissioner's Journal 8 Page 164

" " 8 " 235

Stake 20' from E for 40' Road.

Sta. 99-101-103-105-107 etc.

Continued from Book 559
Page 70



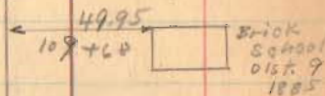
1431

INDEXED ON MAP

March 5-1934
Muddy - Windy
Rainy
Wing lit
Eok. Core.

Stone found
111+23
0'-16' left
stake

Allen T. Wenrick
x
Floyd C. Strayer



Sec. 4 T. 1 R. 8

Sec. 33 T. 2 R. 8



Sec. 3 T. 1 R. 8

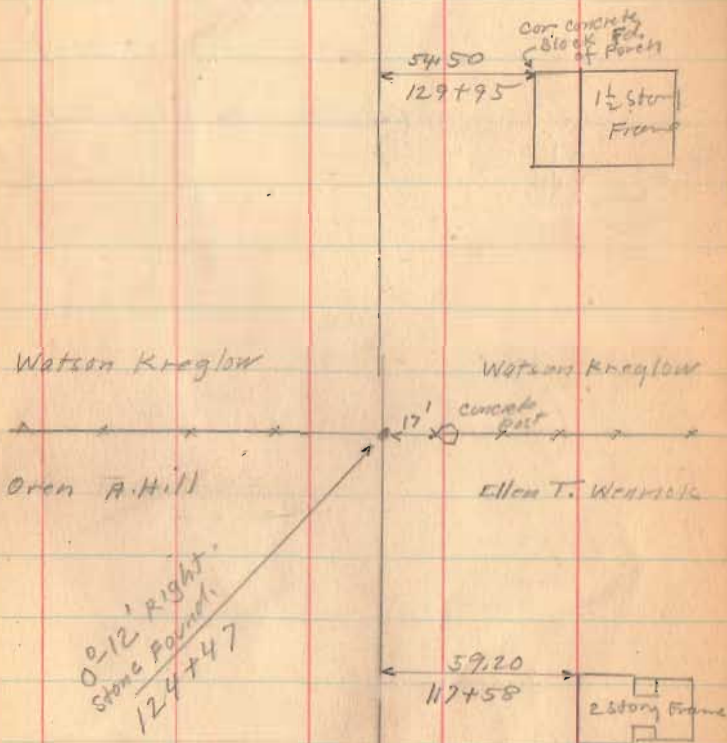
Geo. W. Lynn
x
Carey Kreglow

Sta. 84+68
1" Pipe

Allen T. Wenrick
x
Carey Kreglow



Road 78



1431

INDEXED ON MAP

Road 78

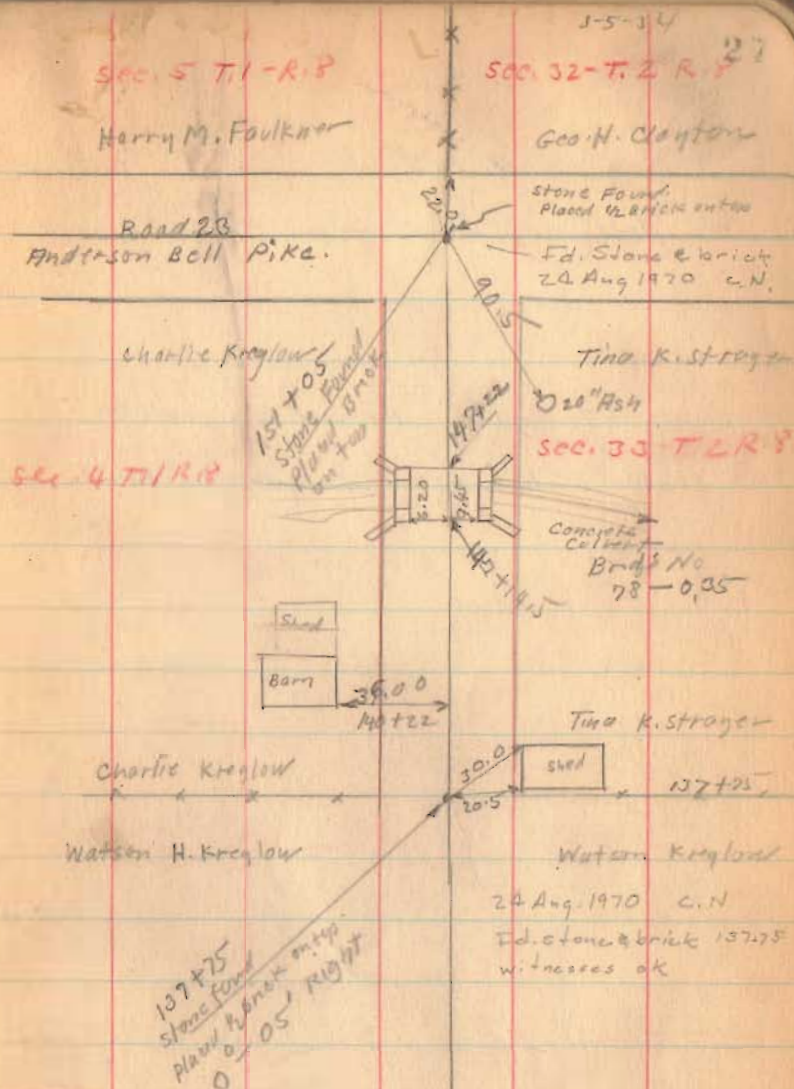
Length 15105 Feet

Length 2.861 Miles

(See Page 62)

1431

INDEXED ON MAP



Road 78 Pleasant Twp.

John Hot
Wilson W. Moore

40' Road from Road 21

To 35

Commissioners Journal 10 Page 202

" " " " 225

staked 40'

40' Road 34 To 23

Commissioners Journal

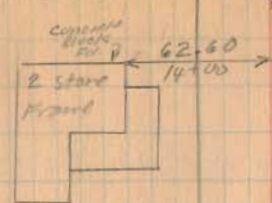
8 Page 164

Report Vol. 8 Page 225

1931

INDEXED ON MAP

66
Degraff Feed Co
L.C. Loffer
18+00
18+00
2" x 3/4" Iron
0'-18' left



18.65
12+35

Wilson W. Moore
11+96
4" Pipe
56.42
42.30
33.90
31.50

Sta. 11+96
Stone
No. 2542

W. Grant Shultz

W. Grant Shultz

L.C. Loffer

Concrete Corner Post

1" Pipe
8+00

Road No 21

Logansville - Metchinville

(see Book 572
Page 12)

SEC. 2 T. 1 R. 8

SEC. 35 T. 2 R. 8

(Drawn to
Poor scale)

Concrete Corner Post

18" x 18" Ledge

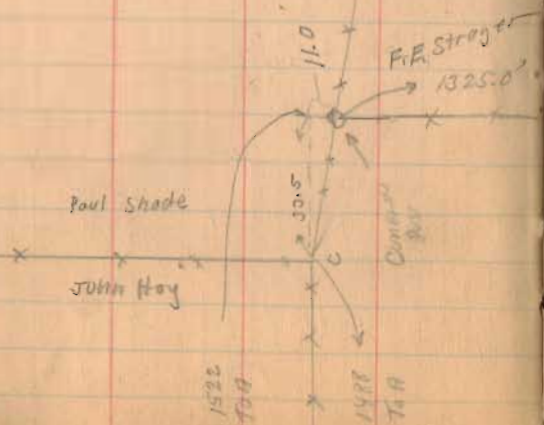
Ledge

Road 78

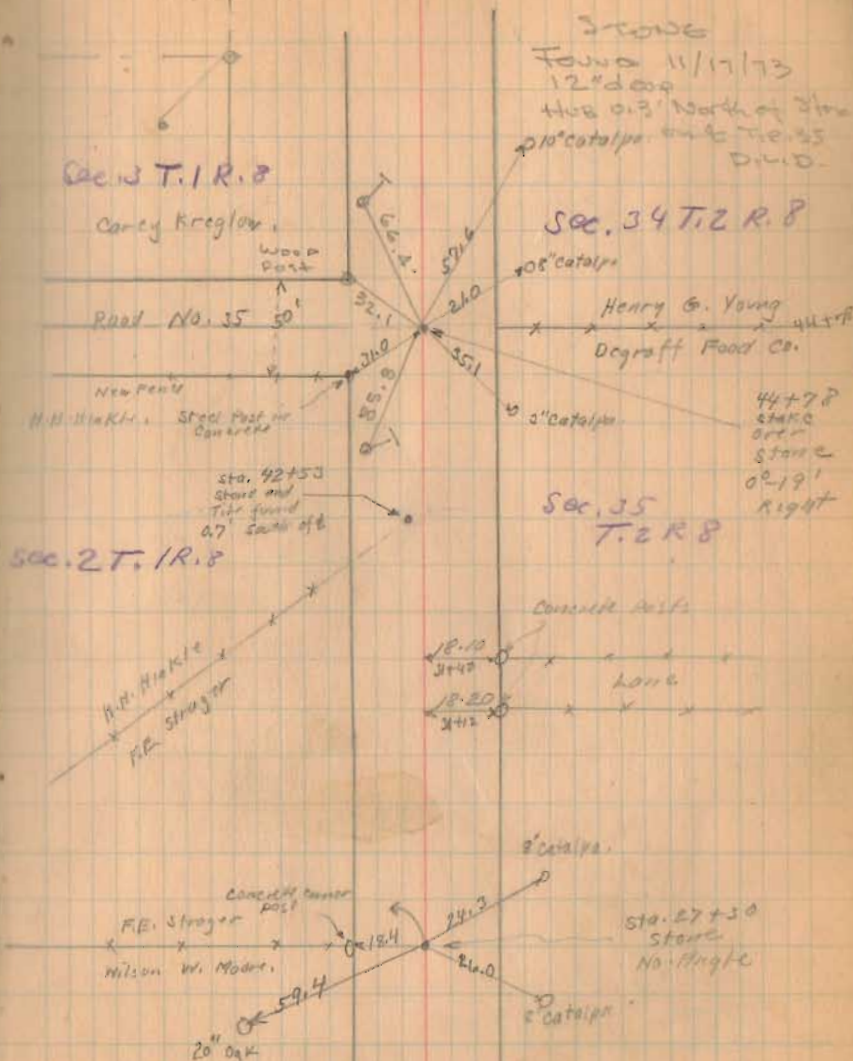
Moore to Moore Val 93 Page 593
106 " 107

Vol. B Page 9 Survey (165)

INDEXED ON MAP



Dec. 18 - 1932
clear
night
M. Kreglow 67



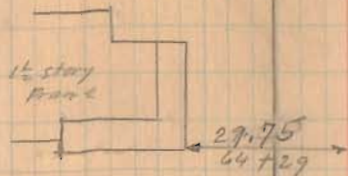
Road 78

2658.82
- 0.40

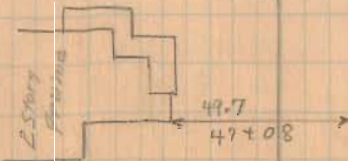
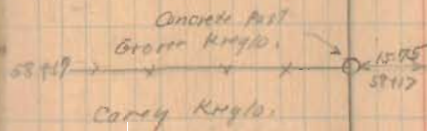
2658.42

12/28/52

05



Concrete
Post 16.9
63 + 30

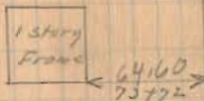


(143)

INDEXED ON MAP

Road 78

Carey Kregler
81+28.5
Joseph Gates



73+03x
Cory M. Shoyer

73+03
Found No
plaid 1" Pipe

71+38
Pipe To Repair
Stake 428 Burns
Survey Book 403
Page 51
0°-34' left.

Cora M. Shoyer

71+39x

George Kregler

18.35
71+44 Carey Kregler

25.20
71+47
3.93

Road 35 (Abandoned)

35.4
1320
71+44

Midway
Cora M. Shoyer
Henry G. Young



1437

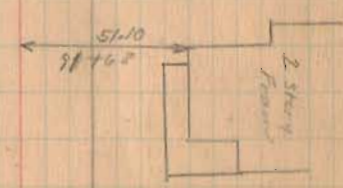
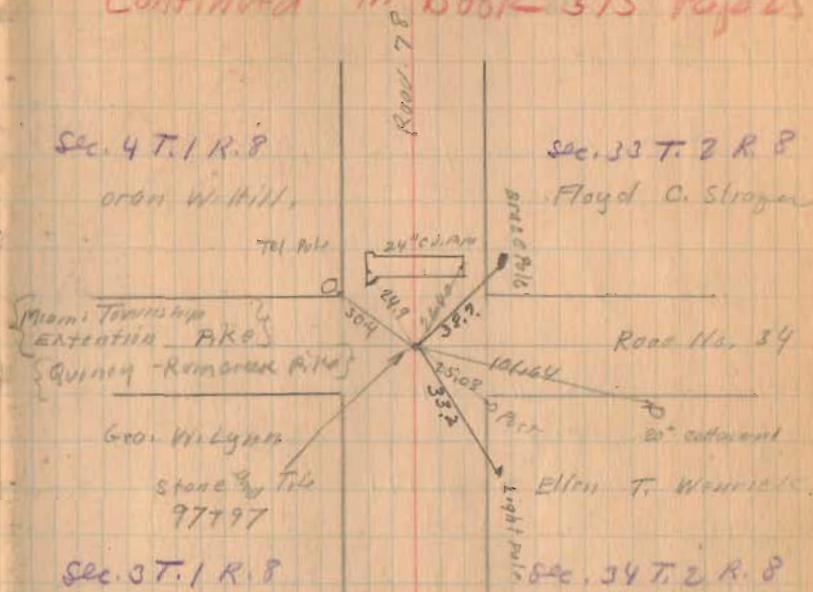
INDEXED ON MAP

Road 78

12-28-32

70

Continued in Book 375 Page 25



Geo. W. Lynn
24463
Carey Kraylow

Ellen T. Warrick
84468
Carey Kraylow

1431

INDEXED ON MAP