

Road 43

Pleasant Twp.

60' Road 1832

Commissioner's Journal Vol. 3 Page 101

See Book 622 Pages 5 To 47
For x-sec 2nd Levels.

staked 30' from \oplus for 60' Road.

9+00

4+00

1+00

For R/W Posts

1793

INDEXED ON MAP

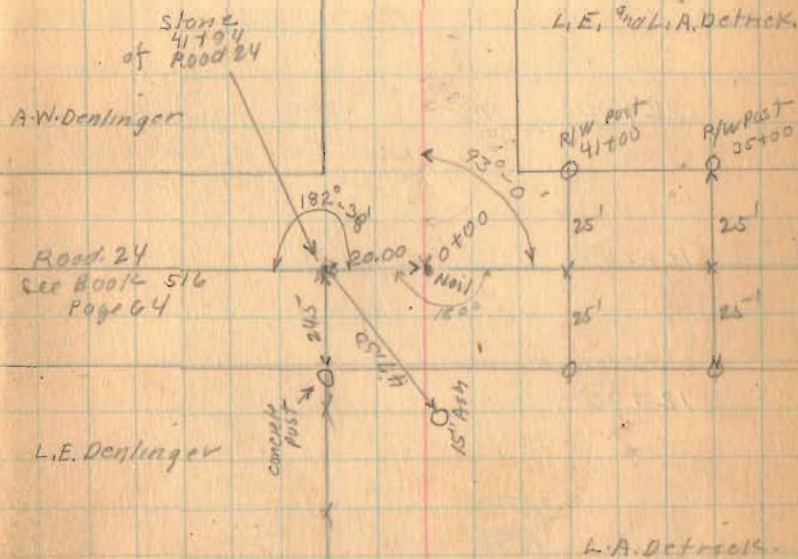
Aug. 31-1937
Warren
F. Wright
G. Wilgus
Wilgus 70

D.K. Kinsinger

J+38

A.W. Denlinger

S. 85° E. 585'-0" E
Nail



Road 43.

8-31-37

.71

1st M.E. DeGraf

10+54

A.J. Detrick

S 85° 00' E

22+00

16+25

12+00

1793

INDEXED ON MAP

Back over
1¹/₄" Iron
12+46.5
0'-06" left

0-35.85

18" A-4

A.J. Detrick

L.E. and L.A.
Detrick

Road 43

Bokongtalas

Bridge 43-0.85

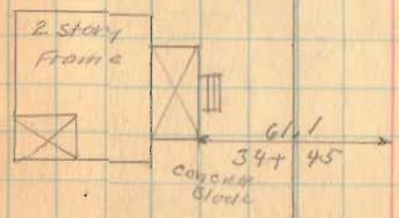


45+00

40+00

37+50

35+25

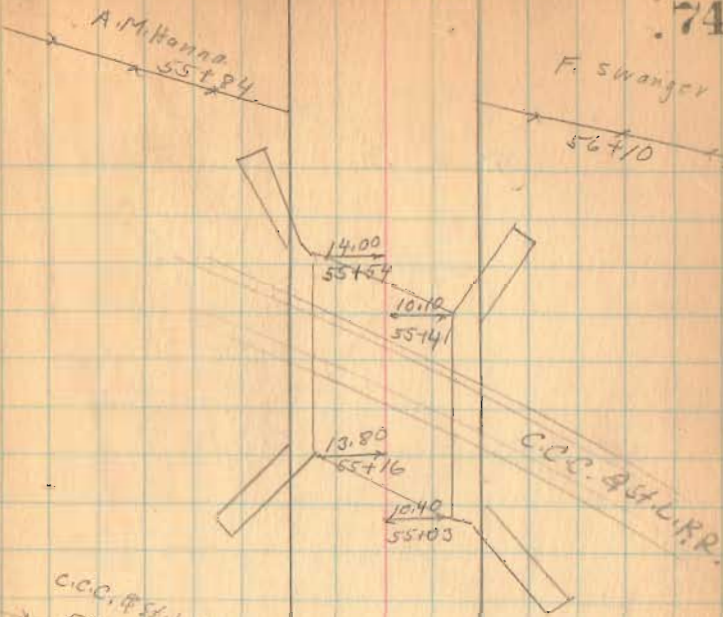


1793

INDEXED ON MAP

Road 43

74



57+00

52+75

49+00

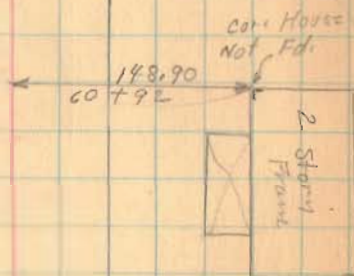
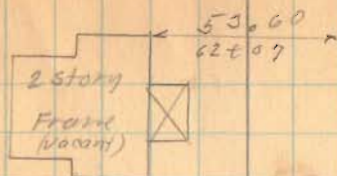
1793

INDEXED ON MAP

Road 43

9-1-33

75



67+00

63+00

60+25



1793

INDEXED ON MAP

Road 43

(76+06 Two side pipes)

92+00

71+52

Stone
Level with ground
No Angle

13.70

Corner
Pit

F.C. Loffer

71+52

F. Swanger

1795

INDEXED ON MAP

Road 43

section lines (No Fence) Z

H.L. Huber

Bridge 43-165
Concrete Slab



(See Page 79)

S. 85-11 E.

31-3-14

H.L. Huber

S. 5-15 W.

32-3-14

Concrete Slab



Wood Post

79+81

A.M. Hanna

2-2-14

Store
79+81
No. 4924

1-2-14

H.L. Huber
82+163
90± 26' left

F.C. Loffer

1793

INDEXED ON MAP

FBK 6/5 pg. 77

Rd. 43 —

Found hub @

80+01 set $5/8$ " ϕ apd.
re-bar in it.

Found hub @

82+43, set $5/8$ " ϕ
re-bar, apd.

Nichols, Dill

1 July, 1991

Road. 43

Length 9524 Feet

Length 1.80378 Miles

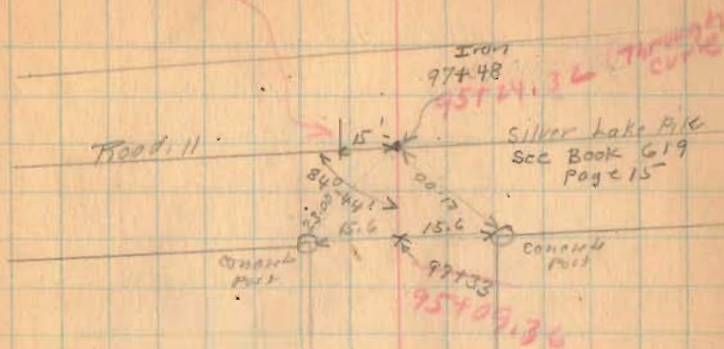
Length 1.80

1793

INDEXED ON MAP

9-1-37 78

New Station
95724.32



Road 43
see Page 77

P.C.

P.T.

S 62° 35' E
324.0

New L S 85° 11' E

Oct. 20, 1937
Windy
F. Wright
S. Wilson
W. K. Wright

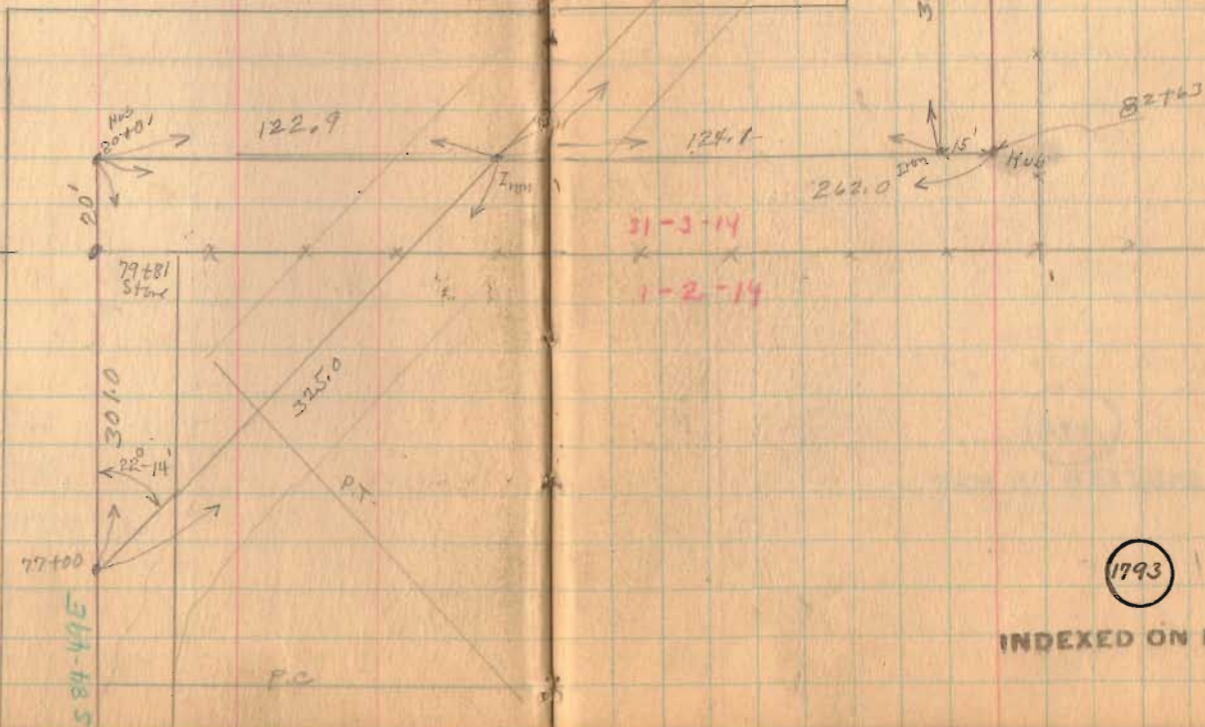
79

P.I. 83+44.28
P.C. 81+53.38
P.T. 85+30.22
T. 190.90
R. 955.37
D. 0°
Δ 22°-36'
E. 18.89
L (Arc) 376.84
L $\frac{1000}{D}$ 376.67

32-3-14

2-2-14

PI = 77+00
PC = 75+12.28
P.T. = 78+83.
T. = 187.72
R. = 955.37
D = 0°
Δ = 22°-14'
E = 18.27
L = (Arc) 370.72
L = $\frac{1000}{D}$ = 370.55



1793

INDEXED ON MAP