

1811

INDEXED ON MAP

Road No. 208 Pleasant Township

(Widths)

Station 0+00 To 14+83.7 No Record

Station 14+83.7 To Width - 30' See Road Record Volume 2 - Page 494,

Station To No Record

Station To 40' wide - see Comm. Journal Vol. 10 P. 27

Stakes set at 100 foot stations  
for a 40' Road, as ordered by  
Mr. Harry Boone.

Township Trustees -

Harry Boone - Loganville

Leo Knight - "

E. S. Burke - "

S. G. Rohrer - Clerk - "

May 25, 1939

E. Core

M. Jones

C. Tennant

H. Lee

S. Dobbie

5

1811

INDEXED ON MAP



Road # 208 Pleasant

Sta. 0+00. Iron set on E.W. Line between  
line fence E. & Stone W. at  
Sta. 14+68.7

Set in apparent  $\frac{1}{2}$  Road 11 prod-  
uced from N.

Stakes set at 100' stations - 40' width

(Sta 7+00) Monuments)

(Sta 1+00- Monuments)

Reset Sta 0+00 3/4/72 - w/  $\frac{3}{4}$ "  $\phi$   
REF G-2/P8 146  
FB 667/P15

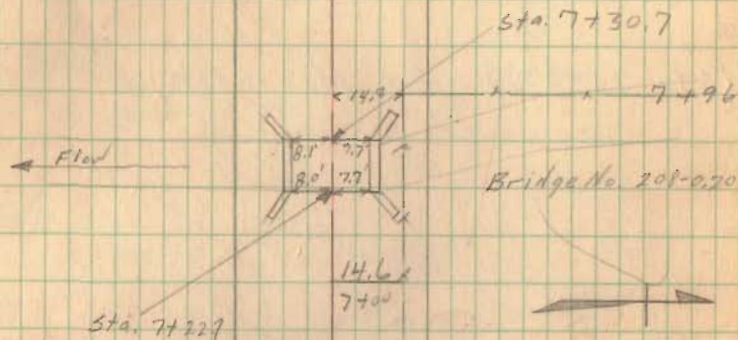
(Summer) May 25, 1939

E. Corie  
M. Jones

6

Ten  
Lee  
Dobie

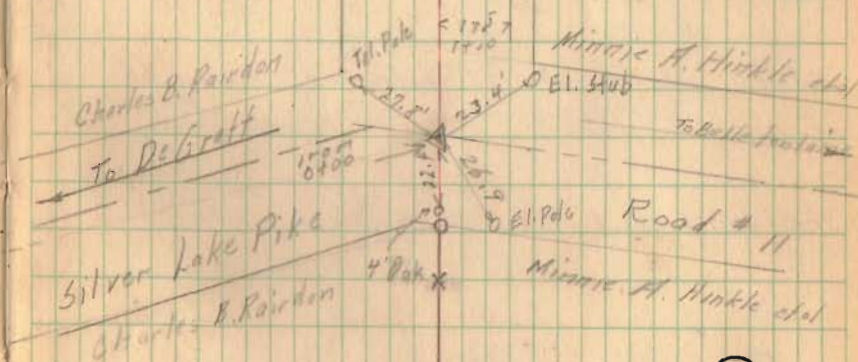
Township



Bridge No. 208-020

Sec 32 T3-R.14

Sec 32 T3-R.14



1811

INDEXED ON MAP



Road # 208

Pleasant Twp

(Sta. 15+83.7 P.T. Monuments)

P.C.	Sta-	13+83.7	Iron
P.I.	" -	14+83.7	Hub
P.T.	" -	15+83.7	Iron

$\Delta = 89^{\circ} 47'$

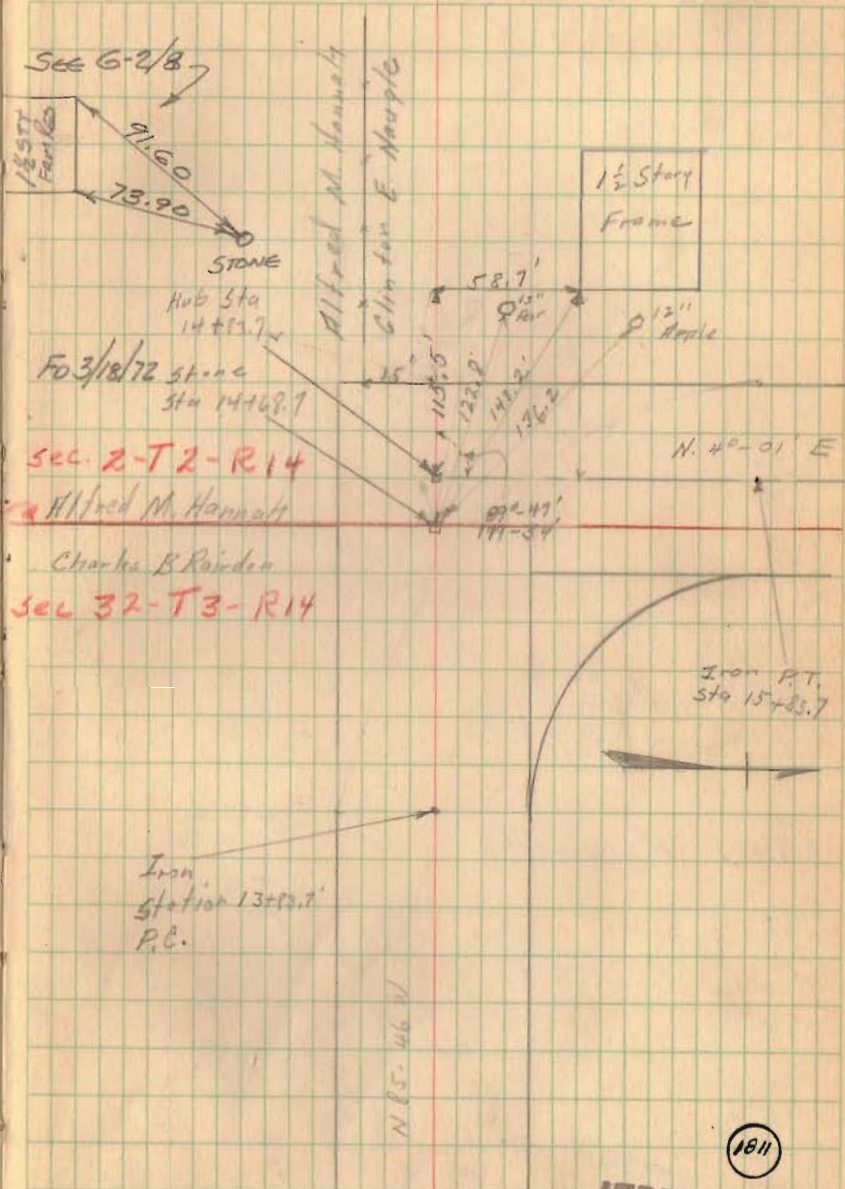
$T = 100'$

$R = 100'$

Stakes placed at 25' intervals on inside of arc only.

(Sta 13+83.7 P.C. Monuments)

May 25, 1927



sec. 2-T2-R14  
 Alfred M. Hannatt  
 Charles B. Rinden  
 sec. 32-T3-R14

1811  
 INDEXED ON MAP

Road # 208

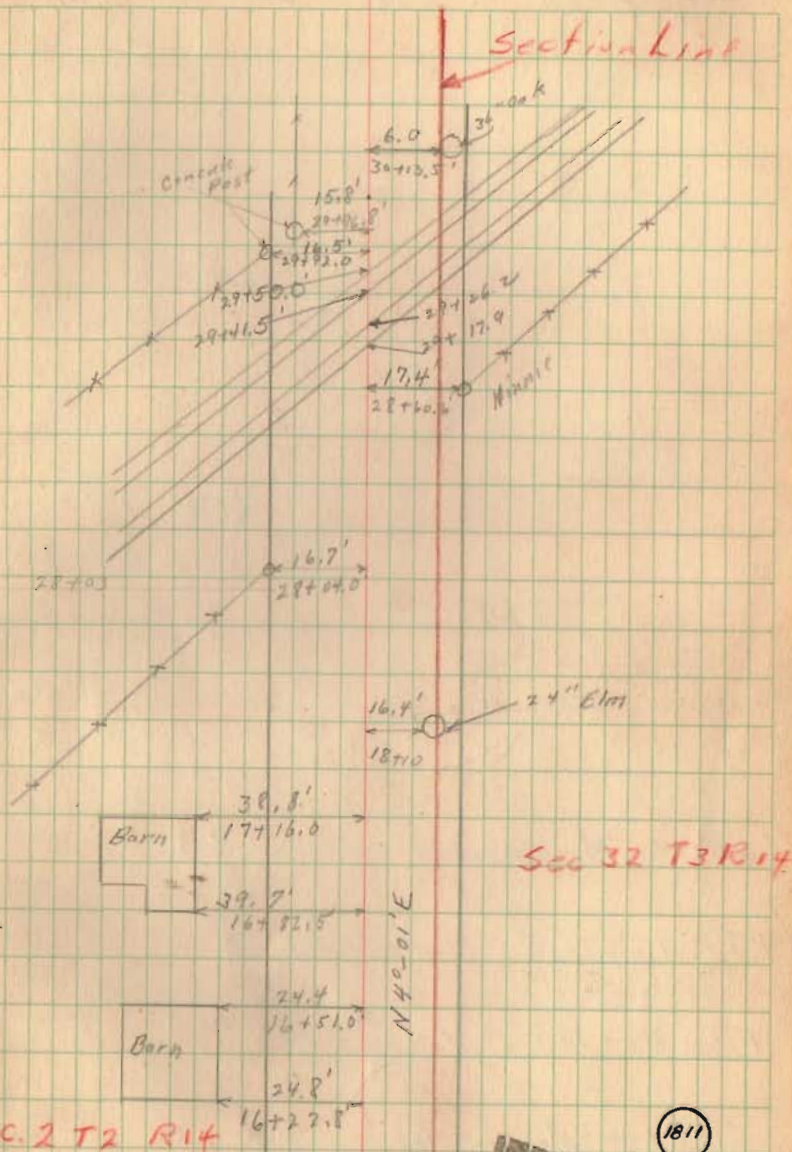
Pleasant Township

27+00 - Monuments

21+00 Monuments

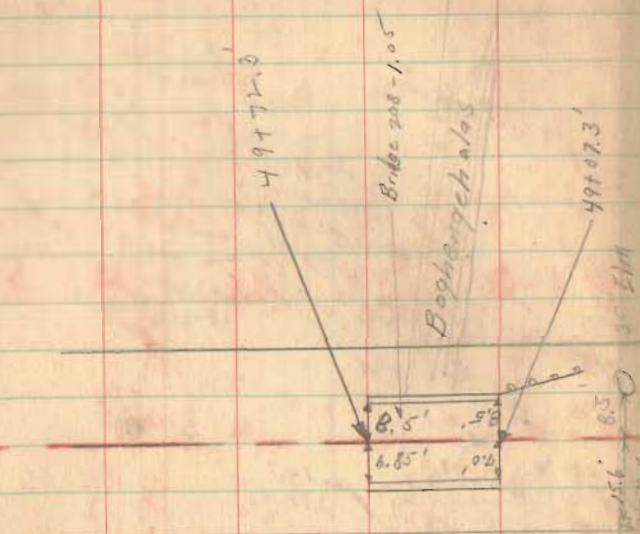
5/26/39

2





Road # 208 Pleasant Twp.



(46+00 Monuments)

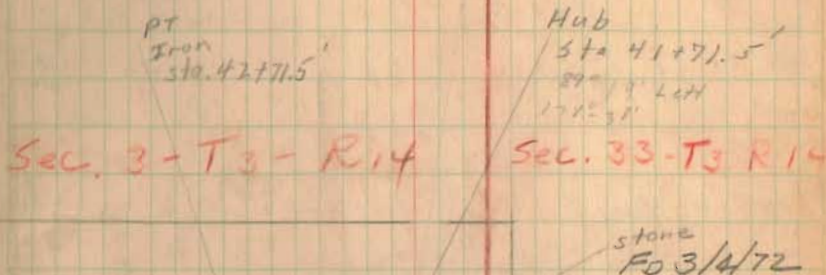
(P.T. - 42+71.5 Monuments)

P.C. 40+71.5 Monuments)

(36+00 Monuments)

(31+00 Monuments)

5/26/39 9



N 95°-18' W.  
 Sec. 2-T2-R14  
 P.C. 40+71.5  
 Sec. 32-T2-R14

$\Delta = 89^{\circ} 19'$   
 $T = 100'$   
 $R = 100'$

180°  
 30+65.8'

INDEXED ON MAP

1811



Road 208

Pleasant.

(63+68.6 Mens.)

(60+58.4 Mens.)

55+00 (Mons.)

(51+06.9, Mens.)

## Deflections

49+50.34	0°
49+50	3°-44'
49+25	8°-29'
50+00	13°-14'
50+25	17°-59'
50+50	22°-44'
50+75	27°-29'
51+00	32°-14'
51+25	38°-33'

Sta. - 49+30.3 P.C.

Mon. South Side only

Road 210

See Book 601 Page 71

Hub  
set by Wright  
see Bk 601 P. 71

6-6-37

Core  
Jones  
&c

10

INDEXED ON MAP

1811

## Deflections

P.C. 60+58.4 -	
61+00	1°-40'
61+50	3°-40'
62+00	5°-40'
62+50	7°-40'
63+00	9°-40'
63+50	11°-40'
P.T. 63+68.6 -	12°-25'

Iron, P.I.

Tennant  
Phillips

P.T. Iron

Sta. 63+68.6

 $\Delta = 24°-49'$  R-359.3

D = 8°

T = 157.9 E-17.15

L = 310.2

P.C. = 60+58.4

Iron

P.T. 51+06.9

 $\Delta = 67°-05'$ 

D = 38°

T = 101.8

L = 176.5

R = 158.6

E = 30.7

5.67 W.  
128.30  
12" thorn.Monument set on Section  
Line - where pieces of brick  
bold stake were found.  
8" x 8" x 15" - Concrete marked +N. 95°-12' W.  
28.65S. 88°-55' E  
50.85S. 88°-55' E  
50.85S. 88°-55' E  
50.85S. 88°-55' E  
50.85S. 88°-55' E  
50.85S. 88°-55' E  
50.85S. 88°-55' E  
50.85S. 88°-55' E  
50.85S. 88°-55' E  
50.85S. 88°-55' E  
50.85

P.T. - P.3. East of Sta 78+53.9 - Set Monument  
South side only.

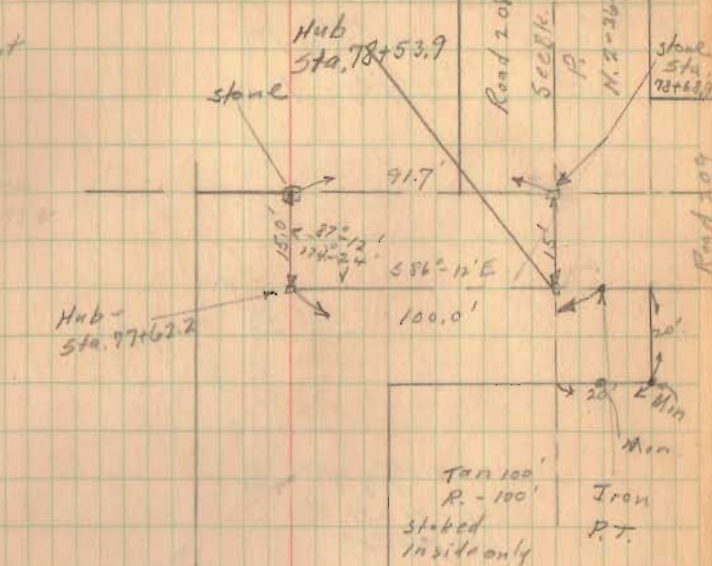
20' - East of Sta 78+53.9 Set Monument  
South Side only

Sta. 76+62.2 Monuments

Sta. 70+00 Monuments

6-7-07

Carl  
Phillips  
Dobie  
Lee  
Tennant



Pt. Iron  
Sta. 76+62.2

Arc Set inside  
only -  $T = 100'$   
 $R = 100'$   
stakes at 25'

Lula H. Milroy

Alonzo C. Tully

Alice B. Greoger

Alonzo C. Tully

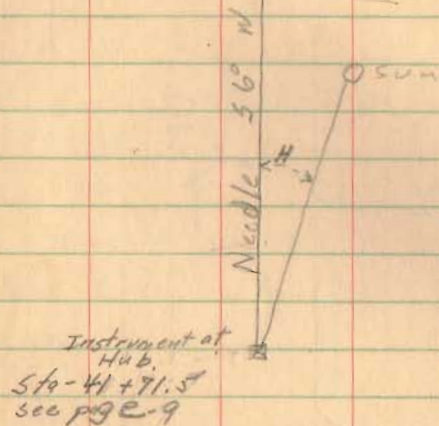
1811

INDEXED ON MAP



Road 208 Pleasant  
Observation for Azimuth

Hub  
Sta-4+83.7  
see page 7



Temp 80° F.

June 8, 1938

E. Core  
G. Inckee

12

	H	M	S	H	V
1	3	4	38	68°-26'	53°-55'
2	3	5	41	68°-41'	53°-42'
3	3	6	44	68°-57'	53°-31'
4	3	7	52	69°-12'	53°-19'
5	3	8	49	69°-26'	53°-10'
6	3	10	07	69°-44'	52°-55'