

PROPOSED COUNTY HIGHWAY

PLEASANT TWP. Sec. 16, T-1, R-3 of 300 9, T-1, R-3

FB 689 Staked 33' wide 16.5' each side of E
E-Parallel to and 11.5' south
of section line

16+00 Hubs set for R/W Men

11+00 Hubs set for R/W Men. 4.0' fence on left

6+00 Hubs set R/W Men. 4.5' fence on left

1+00 Hubs set for R/W Men

March 17, 1952
C.W. Wilgus
D.L. Dedman II
H.S. Dysart &

Stone found (1' below ground)
on 1/2 sec. cor.
1' Northwest of post

60

PI. 22 + 20.37

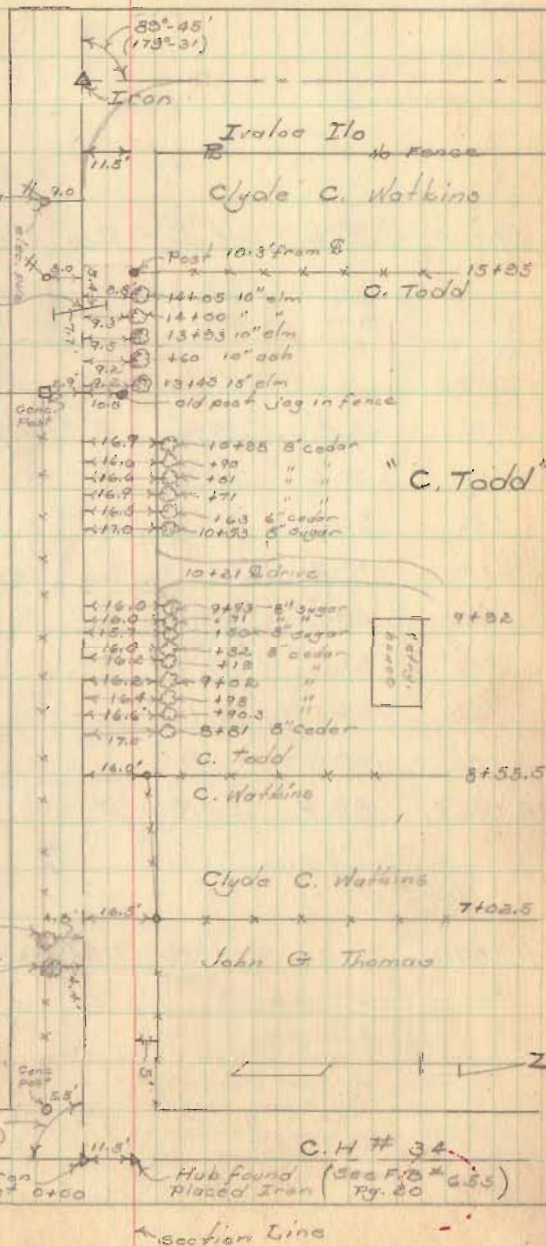
$\Delta = 89^\circ - 45'$

B = 100.00'

T = 99.57'

L = 156.64 (arc)

E = 41.11'



FB 689

(Cont'd)

30+00 Hubs set for R/W Mon.

Sta.	Arc Dist.	Chord Dist.	Def.	total Def.
P.C. 21+23.8				
+40	10.2'	10.2	2°-55'	2°-55'
+60	30.2	30.00	5°-44'	8°-30'
+80	50.2	49.7		14°-23'
22+00	70.2	68.77		20°-07'
+20	20.0	19.97		25°-51'
+40	40.0	39.7		31°-35'
+60	60.0	59.1		37°-18'
+80	80.0	77.9		43°-03'
P.T. 22+86.4	86.4	83.9	1°-50'	44°-53'

$$\frac{\Delta}{R} = 44^\circ - 52.5'$$

23+00 Hubs set for R/W Mon.

61

