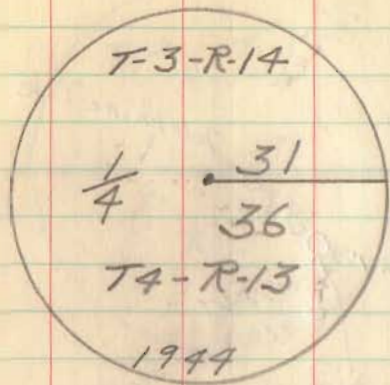


(3)

Rd. 45

10-10-94

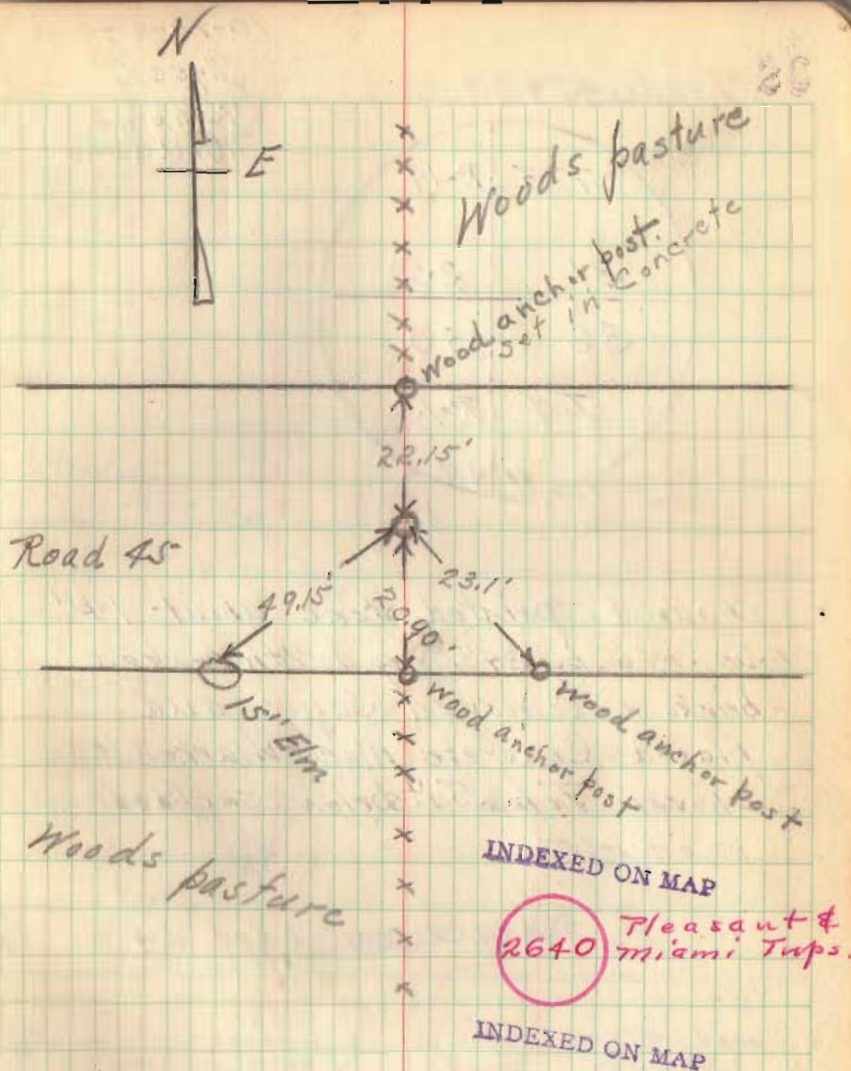
Insert
Robbins
W. Adams



Found Stones and Bricks on top of one ~~of~~ another to a depth of about 4'

Removed same and placed Concrete Mon. ^{4' Long} Stamped as above 6" Below Surface of road

See Field Book 559 p. 64



INDEXED ON MAP

2640 Pleasant & Miami Taps.

INDEXED ON MAP

Found 31 Dec '68
C.N.