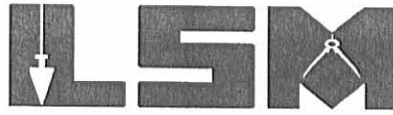


Lee Surveying and Mapping Co., Inc.

Land Surveys • Topography • Subdivisions • Construction Layout

117 N. Madriver St.
Bellefontaine OH 43311



Phone: (937) 593-7335
Fax: (937) 593-7444

1975-2005 - 30 YEARS OF EXCELLENCE

**KLINGELHOFER
13.176 ACRES**

Lying in Fractional Section 12, Town 1, Range 8, Pleasant Township, Logan County, Ohio.

Being all of the Karol Klingelhofer original 12.11 acre tract as deeded and described in Official Record 678, Page 536 of the Logan County Records of Deeds and being more particularly described as follows:

Beginning at a railroad spike found on the center-line of Ohio Route 47 at P.I. Station 191+60.07.

THENCE, with the center-line of Ohio Route 47 (variable widths), S 69°-51'-00"W, a distance of 333.40 feet to a MAG nail set at the TRUE POINT OF BEGINNING, passing the center-line of Township Road 229 at 16.42 feet.

THENCE, with the center-line of Ohio Route 47, S 69°-51'-00"W, a distance of 382.21 feet to a MAG nail set.

THENCE, with the east line of the Agnes I. Rohrer, Trustee 30.00 acre tract (O.R. 593, Pg. 698, Tract I, Parcel I), N 11°-22'-40"W, a distance of 1412.94 feet to a point on the low water line of the Great Miami River, passing a 5/8 inch iron rod set at 30.35 feet, 12 inch concrete posts found at 31.47 feet and 1276.47 feet and a 5/8 inch iron rod set at 1392.94 feet.

THENCE, with the low water line of the Great Miami River, the following eight courses:

S 68°-45'-35"E, a distance of 410.08 feet to a point, referenced by a 5/8 inch iron rod set S 1°-08'-15"E, a distance of 15.00 feet.

S 89°-31'-48"E, a distance of 207.32 feet to a point, referenced by a 5/8 inch iron rod set S 22°-09'-57"W, a distance of 10.00 feet.

S 68°-23'-23"E, a distance of 145.70 feet to a point, referenced by a 5/8 inch iron rod set S 77°-22'-14"W, a distance of 20.00 feet.

S 6°-49'-31"E, a distance of 123.95 feet to a point, referenced by a 5/8 inch iron rod set N 60°-54'-58"W, a distance of 10.00 feet.

S 29°-07'-59"W, a distance of 415.89 feet to a point, referenced by a 5/8 inch iron rod set N 76°-16'-00"W, a distance of 10.00 feet

S 14°-42'-43"W, a distance of 123.15 feet to a point, referenced by a 5/8 inch iron rod set S 65°-53'-25"W, a distance of 10.00 feet.

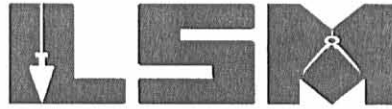
S 21°-57'-04"E, a distance of 132.75 feet to a point, referenced by a 5/8 inch iron rod set at S 65°-53'-25"W, a distance of 5.00 feet.

INDEXED ON MAP
3919 1D-1

Lee Surveying and Mapping Co., Inc.

Land Surveys • Topography • Subdivisions • Construction Layout

117 N. Madriver St.
Bellefontaine OH 43311



Phone: (937) 593-7335
Fax: (937) 593-7444

1975-2005 - 30 YEARS OF EXCELLENCE

N 59°-46'-30"E, a distance of 7.06 feet to a point.

THENCE, with the west line of the Joshua Jay Klingelhofer 2.89 acre tract (O.R. 468, Pg. 107), S 13°-09'-25"E, a distance of 333.30 feet to the point of beginning, passing 5/8 inch iron rods found at 56.39 feet and 292.76 feet.

Containing 13.176 acres, of which 0.283 acre is within the highway right-of-way.

The basis for bearings is the center-line of Ohio Route 47, being S 69°-51'-00"W, and all other bearings are from angles and distances measured in a field survey by Lee Surveying and Mapping Co., Inc. on March 3, 2005.



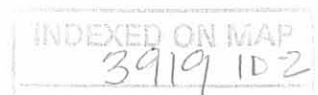
ORIGINAL STAMP IN GREEN

Description prepared by:

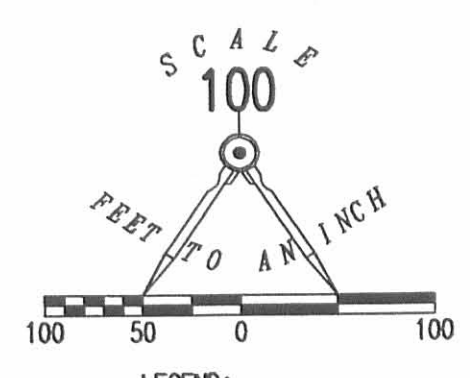
A handwritten signature in black ink, appearing to read 'Jeffrey I. Lee'.

Jeffrey I. Lee
Professional Surveyor 6359
March 4, 2005

L-3984



EXC 3-7-05 S.M. 2K



- LEGEND:
- MAG NAIL SET
 - 5/8 INCH IRON ROD SET
 - 12 INCH CONCRETE POST FOUND
 - 5/8 INCH IRON ROD FOUND
 - ⊗ RAILROAD SPIKE FOUND



RETRACEMENT SURVEY OF THE
KAROL KLINGELHOFER
ORIGINAL 12.11 ACRE TRACT
OFFICIAL RECORD 678, PAGE 536
FRACTIONAL SECTION 12, TOWN 1, RANGE 8
PLEASANT TOWNSHIP
LOGAN COUNTY, OHIO

SURVEYED BY:



Jeffrey I. Lee
JEFFREY I. LEE
PROFESSIONAL SURVEYOR 6359
MARCH 3, 2005

COPYRIGHT 2005 BY:
LEE SURVEYING & MAPPING CO., INC.
117 North Madriver Street
BELLEFONTAINE, OHIO 43311
(937) 593-7335

ORIGINAL STAMP IN GREEN

KSR D0305 3984025 L-3984-2

2 WORKING DAYS
BEFORE YOU DIG
CALL TOLL FREE 800-362-2764
OHIO UTILITIES PROTECTION SERVICE.

INDEXED ON MAP
3919 2P

KLINGELHOFER DESCRIPTION
(May, 1966)

Being situated in Section 12, Town 1, Range 8 of Pleasant Township, Logan County, Ohio.

Beginning at the intersection of the west bank of the Miami River with the center line of State Route #47.

Thence with the center line of State Route #47 S61°-31'W 420.0 feet to the P. I. of a 3°-00' curve.

Thence continuing with the center of State Route #47 S70°-54'W 333.0 feet, passing through the intersection with Township Road 229 at 16.4 feet.

Thence N12°-00'W 333.3 feet to a stake in the west bank of the Miami River, passing through irons at 40.3 feet and 276.3 feet.

The next three courses follow the west bank of the Miami River in a southeasterly direction.

Thence S81°-16'E 390.7 feet to an iron.

Thence N72°-29'E 322.8 feet to an iron.

Thence S47°-28'E 80.5 feet to the place of beginning.

Containing 2.89 acres more or less.

Surveyed from a 15.00 acre tract and being subject to the right of way easement of State Route #47.

Owen K. Shirk
Surveyor 4271

INDEXED ON MAP

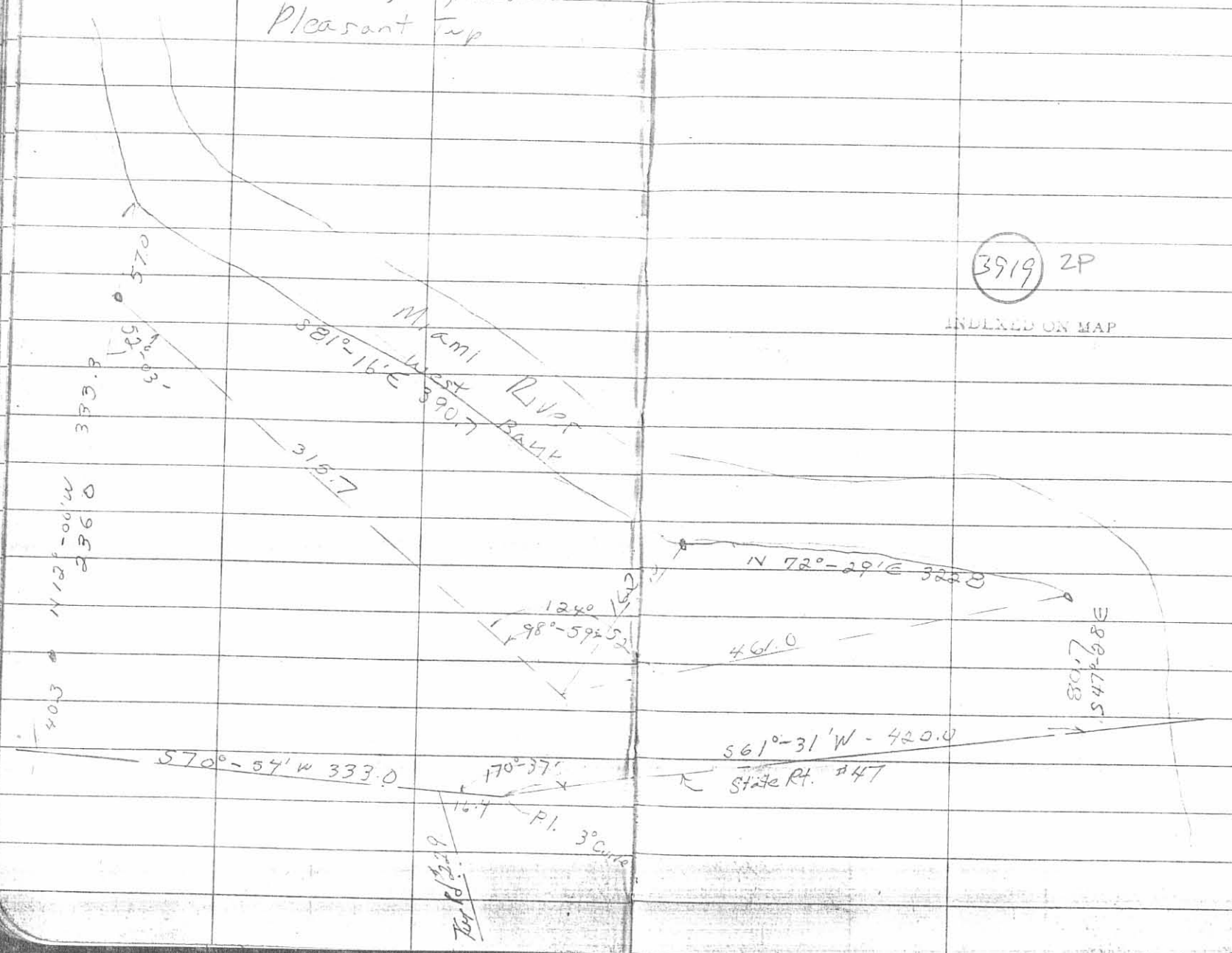
3919 2D

On Plot Book
6-7-66
DEC

Klingelhofer
Sect. 12, T-1, R-8
Pleasant Twp


May 14, 66

28



12-3-13

Lee Surveying and Mapping Co., Inc.

 **APPROVED** Land Surveys • Topography • Subdivisions • Construction Layout

117 N. Madriver St.
Bellefontaine OH 43311



Phone: (937) 593-7335
Fax: (937) 593-7444
surveys@lsminc.us

SHUMAKER, TRUSTEE 1.022 ACRES

Lying in Section 12, Town 1, Range 8, Pleasant Township, Logan County, Ohio.

Being out of the Patsy Ann Shumaker, Trustee 30 acre tract as deeded and described in Official Record 1073, Page 96, Tract I, Parcel I of the Logan County Records of Deeds and being more particularly described as follows:

Commencing on a railroad road spike found on P.I. Station 191 + 60.07 (Plan L-36, Logan County Engineer's Office) on the center-line of Ohio Route 47.

THENCE, with the center-line of Ohio Route 47 (variable widths), S 69°-01'-41"W, a distance of 715.61 feet to a MAG nail found at the TRUE POINT OF BEGINNING.

THENCE, with the center-line of Ohio Route 47 (60 feet wide), S 69°-01'-41"W, a distance of 150.00 feet to a MAG nail set.

THENCE, N 12°-11'-59"W, a distance of 300.18 feet to a 5/8 inch iron rod set, passing a 5/8 inch iron rod set at 30.35 feet.

THENCE, N 69°-01'-41"E, a distance of 150.00 feet to a 5/8 inch iron found.

THENCE, with the west line of the Karol Klingelhofer 13.176 acre tract (O.R. 791, Pg. 423), S 12°-11'-59"E, a distance of 300.18 feet to the point of beginning, passing a 5/8 inch iron rod found at 269.83 feet.

Containing 1.022 acres, of which 0.103 acre is within the highway right-of-way.

Property is subject to any and all previous easements and rights-of-way of record.

The basis for bearings is the center-line of Ohio Route 47, being S 69°-01'-41"W, and all other bearings are from angles and distances measured in a field survey by Lee Surveying and Mapping Co., Inc. on November 26, 2013.

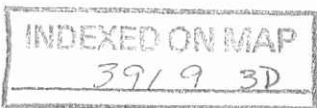


ORIGINAL STAMP IN GREEN

Description prepared by:

William K. Bruce
Professional Surveyor 7437
November 27, 2013

56291013



✓ **APPROVED**

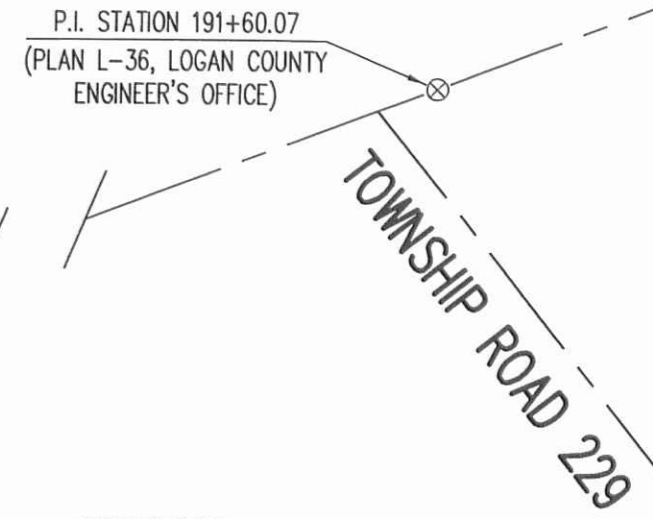
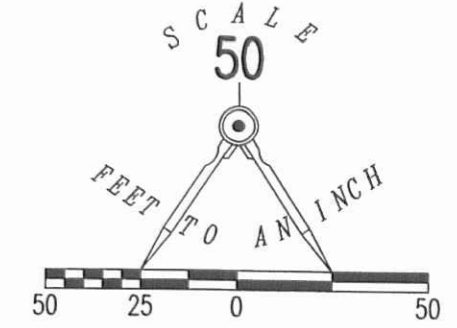
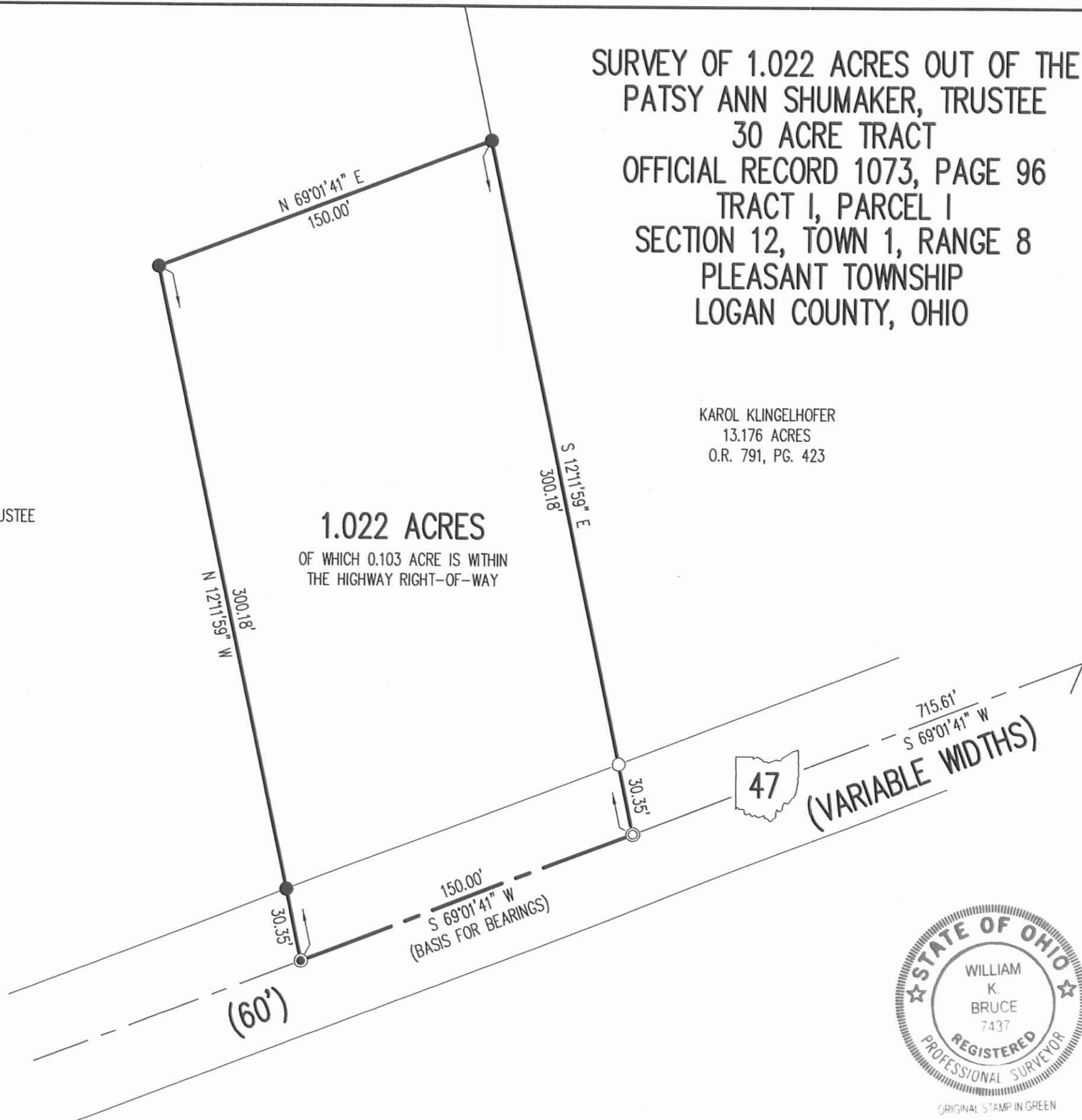
12-3-13

**SURVEY OF 1.022 ACRES OUT OF THE
PATSY ANN SHUMAKER, TRUSTEE
30 ACRE TRACT
OFFICIAL RECORD 1073, PAGE 96
TRACT I, PARCEL I
SECTION 12, TOWN 1, RANGE 8
PLEASANT TOWNSHIP
LOGAN COUNTY, OHIO**

KAROL KLINGELHOFER
13.176 ACRES
O.R. 791, PG. 423

PATSY ANN SHUMAKER, TRUSTEE
30 ACRES
O.R. 1073, PG. 96
TRACT I, PARCEL I

1.022 ACRES
OF WHICH 0.103 ACRE IS WITHIN
THE HIGHWAY RIGHT-OF-WAY



SURVEYED BY:
William K. Bruce
WILLIAM K. BRUCE
PROFESSIONAL SURVEYOR 7437
NOVEMBER 26, 2013



COPYRIGHT 2013 BY:
LEE SURVEYING & MAPPING CO., INC.
117 North Madriver Street
BELLEFONTAINE, OHIO 43311
(937) 593-7335
WWW.LSMINC.US
surveys@lsminc.us
KSS D1013 56291013 L-5629-3

2 WORKING DAYS
BEFORE YOU DIG
CALL TOLL FREE **800-362-2764**

OHIO UTILITIES PROTECTION SERVICE
INDEXED ON MAP
3919 3P