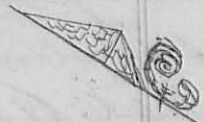


Plat of Logansville

8262

Nov 174



Nov 174

Nov 174

Notes and description of the foregoing plat

The courses of the streets and alleys are $N 30^{\circ} 11'$ and $N 52^{\circ} 4'$ E. The alleys are all $16\frac{1}{2}$ feet wide. Main Street is 66 feet wide. Centre Street is 62 feet wide. White oak Street is $49\frac{1}{2}$ feet wide. Apple and South Streets are each 33 feet wide. Lot No 1 fronts on apple Street 55 feet and extends back and forms the west end of lot No 16, 66 feet wide. All the other lots are 132 by 66, or 5 by 4 poles, containing 32 square poles, located and situated on fractional section 15 Town No 9 Range No 14 M.P.S. to be designated and known by the name of Logansville.

There is a stone placed at the north easterly corner of lot No 2, the south westerly corner of lot No 7 and at the ~~west~~^{south} east corner of lot No 40.

The plat is laid down by a scale of one hundred feet to the inch.

I do certify that the foregoing plat is correctly laid from actual survey made by me correctly, as I verily believe.

J. W. Harmony
C. C. C.

March 15th 1832

Harrison Hopkins

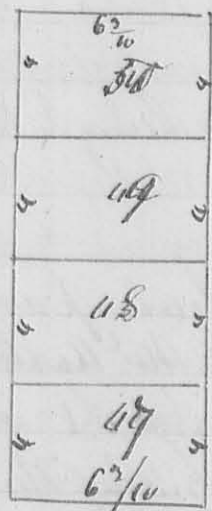
thence N 80° 6 7/10 parts in a County, said to a Bevoak, corner 243
 Corner to Kirkpatrick. thence N 10° E with said Kirkpatrick East
 by line 59 7/10 parts to a stone near small kitchen, from which
 N. by N. of Loch's N. W. thence N 80° E with his north line 64 10/100 parts to
 a stone in a pond south westing about one pole from an old the
 beginning corner of the tract in this survey divided between the bounds
 thence with their west line N 10° W 245 parts, passing Lewis' corner 44
 gain at 222 parts to the beginning containing 99 40/100 acres.

John Horn }
 John Taylor } ch. corners

Dan Hopkins Secy. Jan. 26

N 328

(876)



This plat represents a South Addition to
 the town of Legansville, and shows lots in the North
 as by the plat. The course of the line and the form as the
 former plat. see page 126. The lots in the South ad-
 dition point on the Sidney road as marked on the plat.
 the figures represent feet. there on the North part
 on the streets and alleys of the old town, and extend
 to Dickson's north line as marked in feet.

Sidney Road



Plantation as marked
 above.

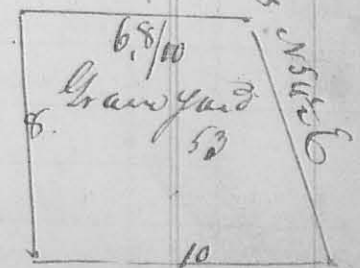
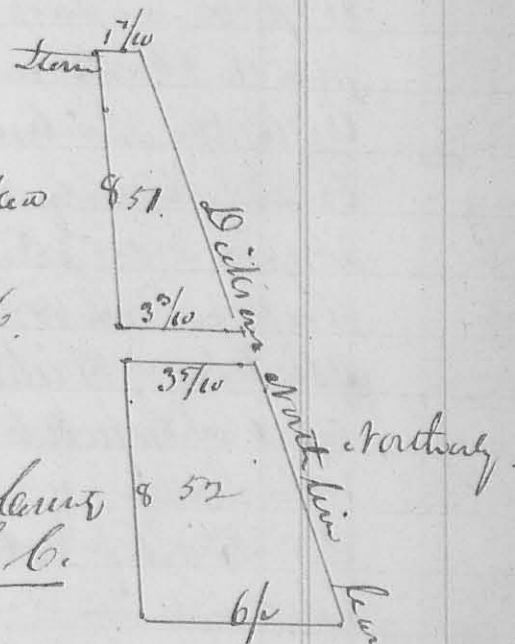
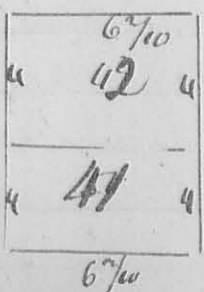
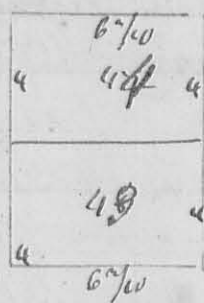
Surveyed June 9. 1826.

James Bennett

Mr Douglas ch. man.

Dan Hopkins Secy.

Jan. 26



to 2 Bech & a Sugar (Sugar down), then S 78 1/2 W to a Bech edge
then S 10 1/2 E 200 poles to a Bech S E L to 98 89; then S 78 1/2 W
105 poles to the beginning (this Survey was made by request of
Mr. J. the Agent but it interferes with other Surveys south
of it, one of which is its elder, and which it of course cannot
sup.

D Hopkins C.S.D.

222

8435

Surveyed Sept 6. 1838 for Thomas Spencer to fill the calls of
his dec'd part of Military Survey N^o 9950 as follows. Beginning
at the SW L of Widow Thompson's Lot, at a Stone, then
N 11 1/2 W 126 1/2 poles to a Stone marked T S, then S 78 1/2 W 63 1/4 poles
to a Stone & two trees from one root & Crab Apple, then S 11 1/2 E 126 1/2
poles to a Stake in a field (this line for 60 poles in length, takes at right
about 3 poles wide off & 13 W goes lot) then N 78 E 63 1/4 poles to
the beginning.

223

8262

Surveyed Sept 13. 1838 for John Dickson 10 Lots determined at
the South Addition to ^{S Addition} Logansville as follows. Beginning at the
S E corner, come to Lot N 47 of the old or first South Addition, at
side of Center Street, then S 29 1/2 W 60 feet crossing Sidney Road, plan
red a Stone for the beginning, then putting said road and extending 8 poles
back on a course of S 35 E & running N 55 W 4 poles each, laid off 4 lots; again
commencing S 55 E 60 feet from the stone, laid off 2 lots same & made
an alley east of the 10 feet. Continued two other lots same size, and
made White Oak Street 3 poles wide, then crossing said Street and
made two other lots same size, in all 10 Lots.

William Meares
The Elder chmn
D Hopkins C.S.D.

N 224

8436

Surveyed for James Ritchey 150 acres of Land, as follows. Begin
ning at a Lime Stone marked + at the SW Corner to Military Survey
N^o 9929, the original Corner Oak Elm which has all down. Then N 11 1/2 W
100 poles to a Stone in the Lima Road then S 78 1/2 W 240 poles to
a Stone, from which a Gray Ash 18 inches in diameter bears N 5 E 32
Links, then S 11 1/2 E 100 poles to a Stone, then N 78 E 240 poles to the beginning