

N^o 234

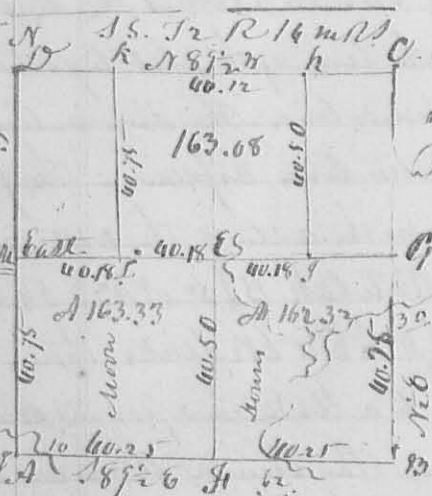
8318



This Plat represents the NW 1/4 of S 4 T 2 R 14 M 21
 Surveyed for James Hook July 16th 1834 beginning
 at a W. O. Stump 88^o 10' South of links and N. O. the
 18^o 20' N 42^o W 51 Links. in turn come represented by
 A on the plat. then North 40 ch. 50 links to
 In Royer L. E. corner then West 40 ch 50
 Links to the NW corner of the section. then
 South 40 ch 50 Links to cherry 2^o 10' N 75^o W 62 Links
 and cherry 2^o 10' 122^o E 11^o Links then
 East 40 ch. 50 Links to the beginning containing 164 ²/₁₀₀ acres
 Lewis & James Hook ch. & amn. J. Hopkins Surveyor.

N^o 235

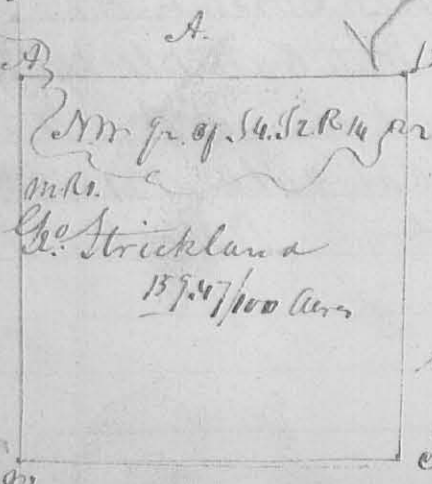
8319



This plat represents the sub. division of S 5 T 2 R 14 M
 Surveyed Feb^y 5. 1835 for Adam Moore Mr.
 Price & David Down. beginning as above at
 of the NW corner of the Section. then with the
 course and distances as marked on the lines
 from A to B. of the division line running
 parallel to the section line, varying so as
 to close. the description of the corners as
 follows: A. NW corner of the section. B. Stake in prairie. C. White
 Oak 22^o 10' 136^o W 60 Links. White Oak 12^o 10' 176^o 78 Links. a stump
 D. Stake in prairie. E. Stake in prairie - h. White Oak 22^o 10'
 174^o W 18 Links. D. 22^o 10' 145^o E 28 links - k. White Oak 18^o 10' 53^o W
 91 Links. D. 12^o 10' 170^o E 78 Links. L. White Oak. 36^o 10' West 34^o 2 Links
 Hickory 18^o 10' N 34^o E 39 Links - M. Hickory 18^o 10' N 17^o E 70 Links -
 Black Oak 18^o 10' S 2^o E 34 Links - The orig. corner here is not to be
 found - John Moore. Alfred Matthews ch. J. Hopkins Sur.

N^o 236

8320



This plat represents the NW 1/4 of S 4 T 2 R 14 M
 Surveyed as follows beginning at NW corner
 of the section then S 17^o 39.50 ch. to orig. gr.
 corner. then S 89^o 20' E. 40 ch. to Stake. come
 to John & David Moore. then N 7^o 40' E. 40 ch. to
 a stake in a prairie. then with the north
 line of said section West 40.15 to the begin
 ning containing 157.97 ⁹⁷/₁₀₀ acres
 W. Price David & David ch. J. Hopkins