

Nathanial Thomas & Charles Cook. I Certify the 255
following depositions & field Note to be correct and true
as taken by me in making the Survey aforesaid.

A. con
D. Hopkins Co. Sur. G. C.

N^o 345

Surveyed Oct 12th 1836 on application of Stokes & Colbert
part of Survey N^o 1117 for Charles Cook as follows. Beginning at
Sugar & Dogwood trees N 37^o W 54 poles to 2 Sugar Ash & Elm.
the Elm broke off about 6 feet high then N 51^o W 25^o poles to a Walnut
in a Big road bearing N 35^o E 23 links, then with the road S 34^o W
30 poles, when an Ash 15 inches diameter bears S 26^o E 40 links, then
S 37^o E 70 poles to a White Oak Sugar & Dogwood, then N 52^o E
38 poles to the beginning containing 15^o acres at same time sur-
veyed in N^o 9657, 9740 & 9679 as follows, for Robert Trout colored
man. Beginning as above, then S 37^o E 112 poles to 3 Ironwood
2 from one root, then S 53^o W 70^o poles to a Hickory Sugar & Dog-
wood, then N 37^o W 105 poles to 2 bushes Ash, then S 53^o W 32 poles to a
Stake in the edge of a meadow, then S 37^o W 60 poles to a
Stake then N 53^o E 6 poles to a Stake then N E 16 poles to
a Stake then N 35^o E 46 poles to a Stake when an Ash bears
S 26^o E 40 links, then S 37^o E 70 poles to White Oak Sugar & Dogwood
then N 53^o E 38 poles to the beginning, containing 7^o 5 acres -
then for Stokes & Colbert. Beginning at the Stake called for as
above, then S 53^o W 56 poles to a Red Oak & Hickory, then S 19^o E
82 poles to an Ash Walnut & Water Beech & black Ash (meadow) -
then S 75^o W 155 poles to a Stake in a Big road then in the
road N 26^o E 40 poles, N 26^o E 140 poles, N 40^o E 32 poles, N 54^o E 29 poles
then leaving the road S 37^o E 60 poles to the beginning containing
8^o 3^o 6^o acres -

Oliver Stokes 2

Samuel Cook 3 Ch. carriers

Dan Hopkins Co. Sur. G. C.

N^o 346

3389

Surveyed for J. Dickson as follows. Beginning at a stone in William
Dickson's South line N. W. corner of Logan with them S 30^o E 42 ch. 06 l.
to a stone then S 54^o W 22 ch. 25 links to a stone in said William
Dickson's South line, then with said line N 44^o E 6 ch.

356 beginning containing 4 1/2 acres -

D. Hopkins Co Jan 26

N^o 347

8390

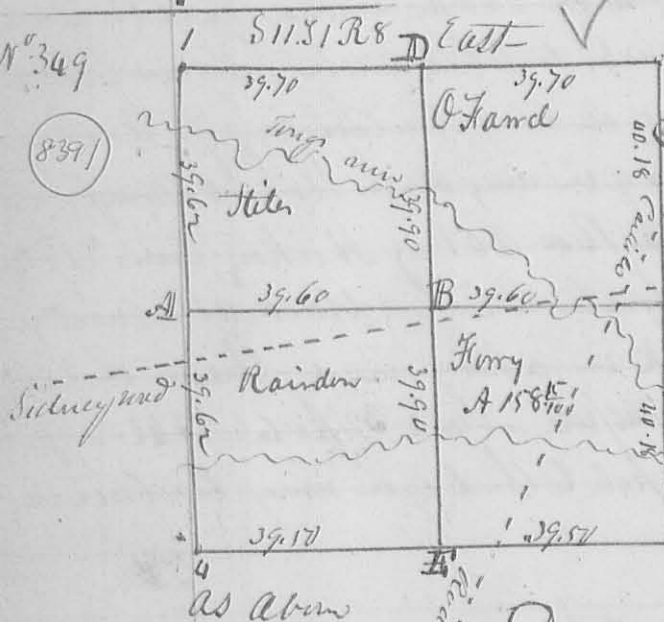
Surveyed Oct 27. 1836 for John Dickson part of M^r Quarter of 18 1/2 R 14 M R 1 as follows Beginning at N.E. Corner of said quarter a Cotton wood 15 L. D beam 188 W 78 links, then N 1/2 W 7 ch 50 links to a stake in a prong, then N 89° W 39 ch 80 links to a white Oak 8 Inches diameter S 43 W 12 L, then N 1/2 W 7 ch 62 links to a stake in a field, then S 89 1/2 E 39 ch. 80 links to the beginning containing 30 acres -

N^o 348

Surveyed Nov. 1. 1836 for John R. Marquis a part of the W. half of the S. E. q^r of 34 1/4 R 14 M R 1 as follows Beginning at the N. E. Corner of said hq^r at a stake at W. Corner to David look then West 3 ch 25 links to a stake in the center of the pig road, then with said road S 1/2 W 6 ch. 37 links to a stake, then S 89 1/2 E 25 ch. 25 links to a stake in said look West line, then with said line N 1/2 W 6 ch 37 links to the beginning containing 2 1/2 acres -

N^o 349

8391



the annexed plat represents the survey sub. division in S 11 1/2 E R 8 made for the individuals whose names are marked on the plat on Nov. 8. 1836. the original corner N 5° 10' W - the present bearing of the sub. division line as follows ABC N 85 1/2 E. distance as marked on the lines of the plat - EB D N 6° W distance

Description of Corners &c

- 1, 2, 3, 4 the several section corners - for a more particular description see Note -
 A. Forked Becks 20 L D S 86 E 28 Links. E line 18 L D N 86 W 14 Links
 B Hickory 30 L D N 59 W 6 Links. Same 18 L D S 36 E 36 Links. C. original
 Corner Wh. O. 36 L D S 86 W 36 Links. Sugar (down) 24. N 63 E 32 Links
 D Becks 20 L D N 53 W 14 L. Hickory 12 L D S 81 E 6 L original corner

Survey No 616

185

8389

Surveyed April 17th 1848

for Josiah Carr Esq., a lot of land adjoining the town of Loganville in section 15 T. 2 Range 14 East Miami river as follows to wit Beginning at a ~~stone~~ stone in the East line of the S. addition to the S. addition to said town from which a white C. stump 36 S. 5. bears E. 20. E 28 links and a MC. stump 8 S. 5. N 20 W 65 links distant thence N 63 1/2 E 15 chains to a stake in West line of Mrs. Douglass' land, thence North 11 chains to a stake at said Douglass. N. W. corner thence West 15 chains to a stake, thence North 3 chains to a stake near a Blk. Oak thence S 37 W 9.50 chains to a stake between a R. Oak and Ash. thence S 30 W 15 chains to the stone at the beginning corner containing 23. $\frac{40}{100}$ Acre

Also laid off for same out of same tract a lot for Daniel Beck. as follows. Beginning N 30 W 64 links (from the stone mentioned as the beginning of Carr's tract) at a stone thence N 58 E 10 perches to a stone thence N 30 W 16 perches to a stone thence S 58 W 10 perches to a stone thence S 30 E 16 perches to the beginning. Containing One acre.

Also laid off for same out of same tract a lot for Thompson Dixon Esq., as follows. Beginning at a stone at Beck's S. E. corner thence N 38 E 3.50 chains to a stone at King's S. W. corner thence N 22 W 7 chains to a stone at said King's N. W. corner thence S 54 W 5.55 chains to a stone in the East line of Loganville thence S 30 E 2.43 chains to a stone at Beck's N. W. corner.

corner

Thence N 58 E. 2.50 chs. to Becks. N.E. Corner thence S 30 E 4 chs. to the stone at the Beginning containing 3 Acres ~~and~~

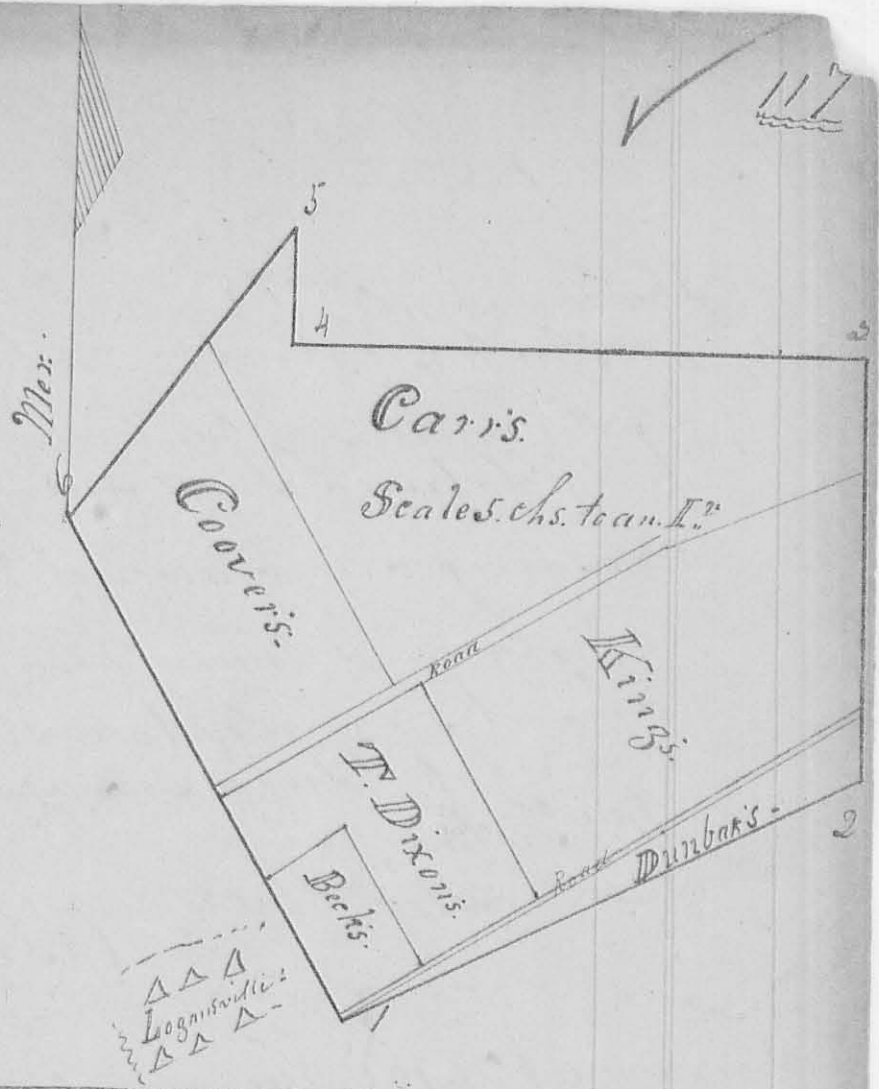
Also laid off a lot for same out of same tract for M. Abram Coover as follows to-wit, Beginning N 30 W 30 feet from a stone in the East line of Loganville at the N.W. Corner of S. Dixons Plot. thence N 54 E. 21 perches to a stake thence N 30 W 38 ²⁰/₂₃ perches to a stake thence S 37 W 22 poles to a stake Between a R. Oak and Ash thence S 30 E 30 poles to a stake at the beginning containing ~~3 Acres~~ 4 Acres - 82 Perches -

Also laid off a lot out of same tract for Josiah Carr as follows. to wit Beginning at a stake near a red oak thence N 37 E 16 ¹⁰/₂₅ poles to a stake ^{near a white oak} thence South 12 poles to a stake a small Cherry and Dogwood thence East 61 poles to a stake near a N. O. 16 ¹⁰/₂₅ thence South 7 ¹/₂ poles to a stone at Kings N.E. Corner thence S 67 ³/₄ W 28 poles to a stone thence S 58 ¹/₂ W 29 ¹/₂₅ poles to a stone 30 feet S. of Coovers S.E. Corner thence N 30 W 40 ¹⁵/₂₅ poles to the beginning containing - 8 Acres -

Madison Vial }
John M. Kee } chs.

O. Hayes Sur. S.C.

Note. See plot on next page
O. Hayes



Survey No. 617. Surveyed April 18th 1828 for
 Allen D. and Samuel Crofford
 the S.W. q. or part of fractional Sect 17
 Down 2. Range 15 E. N.R. as follows. Beginning
 at the S.W. corner of the sect. at a post in a prairie
 thence N 77° E. 40.90 chs. to a stone thence
 S 1° W 25.50 chains to a stone thence S 89° W
 40.11 chains to a stone thence N 91° E 17.25
 chains to the Beginning containing 85 Acres
 117.62 perches

A.D. Crofford?
 S. Crofford Sch. cr's.

O. Hayes Sur. L. & C.