

Received 5-22-96 OK gch



# Lee Surveying and Mapping Co., Inc.



Farm Surveys • Lot Surveys • Topography • Subdivisions • Construction Layout

143 EAST COLUMBUS AVENUE  
BELLEFONTAINE, OHIO 43311

(513) 593-7335  
FAX (513) 593-7444

## WILLIS N. PULFER 60.251 ACRES

Lying in Section 16, Town 1, Range 8, Pleasant Township, Logan County, Ohio.

Being all of the Willis N. Pulfer and Emma Sue Pulfer original 60.0 acre tract as deeded and described in Volume 388, Page 836 of the Logan County Records of Deeds and being more particularly described as follows:

Beginning at a PK nail found at the northwest corner of Section 16 and on the center-line of County Highway 23.

THENCE, with the north line of Section 16 and the south line of William F. Pence 20.0 acre tract (O.R. 187, Pg. 718), S 89°-03'-18" E, a distance of 1037.71 feet to a 5/8 inch iron rod set at the TRUE POINT OF BEGINNING.

THENCE, with the north line of Section 16 and the south line of the said 20.0 acre tract, S 89°-03'-18" E, a distance of 125.66 feet to a 5/8 inch iron rod found.

THENCE, with the north line of Section 16 and the south lines of the Willis Pulfer original 80.0 acre tract (Vol. 223, Pg. 470) and the Johnnie Durham 18.140 acre tract (Vol. 398, Pg. 840), S 89°-15'-15" E, a distance of 1488.14 feet to a 1 inch iron rod found.

THENCE, with the west lines of the Gregory Allen Shoup 8.005 acre tract (O.R. 268, Pg. 166) and the Randall L. Stewart 66.772 acre tract (O.R. 209, Pg. 624), S 1°-24'-11" W, a distance of 1619.32 feet to a stone found.

THENCE, with the lines of the Brian D. Kuck 40.280 acre tract (O.R. 127, Pg. 749) the following three courses:

N 89°-44'-33" W, a distance of 1531.31 feet to a 5/8 inch iron rod found.

S 2°-15'-53" W, a distance of 79.62 feet to a 5/8 inch iron rod found.

N 89°-19'-30" W, a distance of 74.29 feet to a 5/8 inch iron rod found.

THENCE, with a line of the said 39.675 acre tract and the east line of the Allen C. Kuck original 40.0 acre tract (Vol. 279, Pg. 563), N 1°-09'-42" E, a distance of 1712.44 feet to the point of beginning.

Containing 60.251 acres.

The basis for bearings is the center-line of Ohio Route 47 along the north line of the Pulfer 80.0 acre tract being N 87°-45'-40" E, and all other bearings are from angles and distances measured in a field survey by Lee Surveying and Mapping Co., Inc. on May 7, 1996.

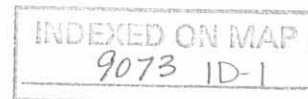
Description prepared by:



Jeffrey I. Lee  
Professional Surveyor 6359  
May 16, 1996

L 1480

ORIGINAL STAMP IN GREEN



Received 5-22-96 OK grv



# Lee Surveying and Mapping Co., Inc.



Farm Surveys • Lot Surveys • Topography • Subdivisions • Construction Layout

143 EAST COLUMBUS AVENUE  
BELLEFONTAINE, OHIO 43311

(513) 593-7335  
FAX (513) 593-7444

## WILLIS N. PULFER 2.349 ACRES

Lying in Section 9, Town 1, Range 8, Pleasant Township, Logan County, Ohio.

Being out of the Willis Pulfer original 80.0 acre tract as deeded and described in Volume 223, Page 470 of the Logan County Records of Deeds and being more particularly described as follows:

Beginning at a PK nail found at the southwest corner of Section 9 and on the center-line of County Highway 23.

THENCE, with the south line of Section 9 and the south line of William F. Pence 20.0 acre tract (O.R. 187, Pg. 718), S 89°-03'-18" E, a distance of 1163.37 feet to a 5/8 inch iron rod found at the TRUE POINT OF BEGINNING.

THENCE, with the east lines of the said 20.0 acre tract and the Robert W. Jackson 44.578 acre tract (O.R. 187, Pg. 705), N 0°-58'-06" E, a distance of 1703.53 feet to a railroad spike found.

THENCE, with the center-line of Ohio Route 47, N 87°-45'-40" E, a distance of 60.10 feet to a railroad spike set.

THENCE, S 0°-58'-06" W, a distance of 1706.66 feet to a 5/8 inch iron rod set.

THENCE, with the north line of the Willis N. Pulfer original 60.0 acre tract (Vol. 388, Pg. 836), N 89°-15'-15" W, a distance of 60.00 feet to the point of beginning.

Containing 2.349 acres of which 0.041 acre is within the highway right-of-way.

The basis for bearings is the center-line of Ohio Route 47 being N 87°-45'-40" E, and all other bearings are from angles and distances measured in a field survey by Lee Surveying and Mapping Co., Inc. on May 7, 1996.

Description prepared by:



*Jeffrey I. Lee*  
Jeffrey I. Lee  
Professional Surveyor 6359  
May 16, 1996

L 1480

ORIGINAL STAMP IN GREEN

INDEXED ON MAP  
9073 1D-2

Received 5-22-96 OKJCH



# Lee Surveying and Mapping Co., Inc.



Farm Surveys • Lot Surveys • Topography • Subdivisions • Construction Layout

143 EAST COLUMBUS AVENUE  
BELLEFONTAINE, OHIO 43311

(513) 593-7335  
FAX (513) 593-7444

## WILLIS N. PULFER 37.891 ACRES

Lying in Section 9, Town 1, Range 8, Pleasant Township, Logan County, Ohio.

Being out of the Willis Pulfer original 80.0 acre tract as deeded and described in Volume 223, Page 470 of the Logan County Records of Deeds and being more particularly described as follows:

Beginning at a PK nail found at the southwest corner of Section 9 and on the center-line of County Highway 23.

THENCE, with the south line of Section 9 and the south line of William F. Pence 20.0 acre tract (O.R. 187, Pg. 718), S 89°-03'-18" E, a distance of 1163.37 feet to a 5/8 inch iron rod found.

THENCE, with the north line of the Willis N. Pulfer original 60.0 acre tract (Vol. 388, Pg. 836), S 89°-15'-15" E, a distance of 60.00 feet to a 5/8 inch iron rod set at the TRUE POINT OF BEGINNING.

THENCE, N 0°-58'-06" E, a distance of 1706.66 feet to a railroad spike set.

THENCE, with the center-line of Ohio Route 47, N 87°-45'-40" E, a distance of 545.40 feet to a PK nail found.

THENCE, with the westerly right-of-way of the D. T. & I. Railroad, S 30°-43'-55" E, a distance of 1059.39 feet to a 5/8 inch iron rod set.

THENCE, with the west line of the Johnnie Durham 18.140 acre tract (Vol. 398, Pg. 840), S 1°-07'-38" W, a distance of 831.57 feet to a 5/8 inch iron rod set.

THENCE, with the north line of the aforementioned Willis N. Pulfer original 60.0 acre tract, N 89°-15'-15" W, a distance of 1098.94 feet to the point of beginning.

Containing 37.891 acres of which 0.382 acre is within the highway right-of-way.

The basis for bearings is the center-line of Ohio Route 47 along the north line of the Pulfer 80.0 acre tract being N 87°-45'-40" E, and all other bearings are from angles and distances measured in a field survey by Lee Surveying and Mapping Co., Inc. on May 7, 1996.

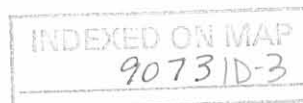
Description prepared by:

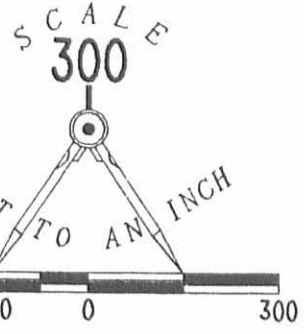
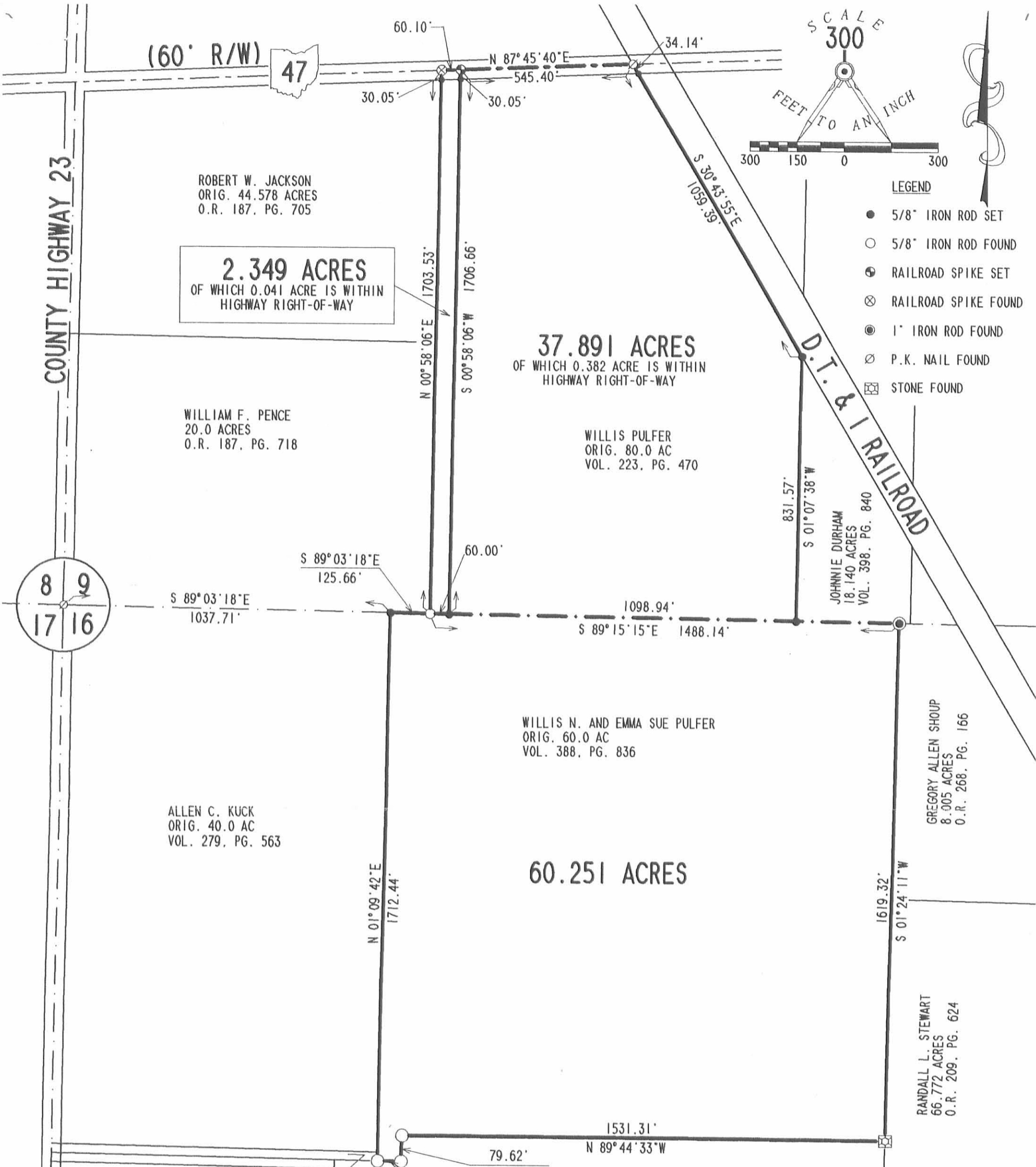


*Jeffrey I. Lee*  
Jeffrey I. Lee  
Professional Surveyor 6359  
May 16, 1996

L 1480

ORIGINAL STAMP IN GREEN





- LEGEND**
- 5/8" IRON ROD SET
  - 5/8" IRON ROD FOUND
  - ⊕ RAILROAD SPIKE SET
  - ⊗ RAILROAD SPIKE FOUND
  - ⊙ 1" IRON ROD FOUND
  - ⊘ P.K. NAIL FOUND
  - ⊠ STONE FOUND

ROBERT W. JACKSON  
 ORIG. 44.578 ACRES  
 O.R. 187, PG. 705

**2.349 ACRES**  
 OF WHICH 0.041 ACRE IS WITHIN  
 HIGHWAY RIGHT-OF-WAY

WILLIAM F. PENCE  
 20.0 ACRES  
 O.R. 187, PG. 718

**37.891 ACRES**  
 OF WHICH 0.382 ACRE IS WITHIN  
 HIGHWAY RIGHT-OF-WAY

WILLIS PULFER  
 ORIG. 80.0 AC  
 VOL. 223, PG. 470

JOHNNIE DURHAM  
 18.140 ACRES  
 VOL. 398, PG. 840

WILLIS N. AND EMMA SUE PULFER  
 ORIG. 60.0 AC  
 VOL. 388, PG. 836

ALLEN C. KUCK  
 ORIG. 40.0 AC  
 VOL. 279, PG. 563

**60.251 ACRES**

GREGORY ALLEN SHOUP  
 8.005 ACRES  
 O.R. 268, PG. 166

RANDALL L. STEWART  
 66.772 ACRES  
 O.R. 209, PG. 624

BRIAN D. KUCK  
 40.28 ACRE  
 O.R. 127, PG. 749

**RETRACEMENT SURVEY OF THE  
 WILLIS N. AND EMMA SUE PULFER  
 ORIGINAL 60.0 ACRE TRACT  
 VOLUME 388, PAGE 836  
 AND SURVEY OF TWO TRACTS OUT OF THE  
 WILLIS PULFER ORIGINAL 80.0 ACRE TRACT  
 VOLUME 223, PAGE 470  
 SECTIONS 9 AND 16, TOWN 1, RANGE 8  
 PLEASANT TOWNSHIP  
 LOGAN COUNTY, OHIO**

**REFERENCES**  
 LOGAN COUNTY ENGINEER'S FILES:  
 R-6885, R-7566  
 FIELD BOOK 208, PG. 13 & 14  
 FIELD BOOK 552, PG. 65-69



SURVEYED BY:  
*Jeffrey I. Lee*  
 JEFFREY I. LEE  
 PROFESSIONAL SURVEYOR 6359  
 MAY 7, 1996

COPYRIGHT 1996 BY:  
**LEE SURVEYING & MAPPING CO., INC.**  
 143 East Columbus Avenue  
 BELLEFONTAINE, OHIO 43311  
 (513) 593-7335  
 D 283 WNPULFER L-1480-3

2 WORKING DAYS  
**BEFORE YOU DIG**  
 CALL TOLL FREE **800-362-2764**  
 OHIO UTILITIES PROTECTION SERVICE.

INDEXED ON MAP  
 9073 1P

ORIGINAL STAMP IN GREEN