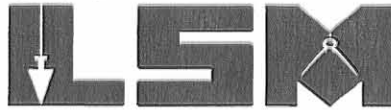


# Lee Surveying and Mapping Co., Inc.

Land Surveys • Topography • Subdivisions • Construction Layout

117 N. Madriver St.  
Bellefontaine OH 43311



Phone: (937) 593-7335  
Fax: (937) 593-7444

## ROHRER 1.123 ACRES

Lying in Fractional Section 12, Town 1, Range 8, Pleasant Township, Logan County, Ohio.

Being out of the Agnes I. Rohrer, Trustee, original 20 acre tract as deeded and described in Official Record 593, Page 698, Tract I, Parcel 2, of the Logan County Records of Deeds and being more particularly described as follows:

Beginning at a railroad spike found in the center-line of Ohio Route 47 on P.I. Station 191+71.8 (Logan County Engineer's File L-20).

THENCE, with the center-line of Ohio Route 47 (60 feet wide), S 69°-51'-00" W, a distance of 709.13 feet to a MAG nail set at the TRUE POINT OF BEGINNING.

THENCE, S 20°-09'-00" E, a distance of 241.15 feet to a 5/8 inch iron rod set, passing a 5/8 inch iron rod set at 30.00 feet.

THENCE, S 69°-51'-00" W, a distance of 133.17 feet to a 5/8 inch iron rod set.

THENCE, N 20°-09'-00" W, a distance of 75.88 feet to a 5/8 inch iron rod set.

THENCE, S 69°-51'-00" W, a distance of 101.55 feet to a 5/8 inch iron rod set.

THENCE, N 20°-09'-00" W, a distance of 165.27 feet to a MAG nail set, passing a 5/8 inch iron rod set at 135.27 feet.

THENCE, with the center-line of Ohio Route 47, N 69°-51'-00" E, a distance of 234.71 feet to the point of beginning.

Containing 1.123 acres, of which 0.162 acre is within the highway right-of-way.

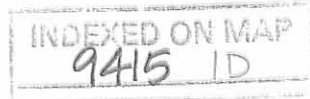
The basis for bearings is the center-line of Ohio Route 47, being S 69°-51'-00" W, and all other bearings are from angles and distances measured in a field survey by Lee Surveying and Mapping Co., Inc. on October 16, 2002.



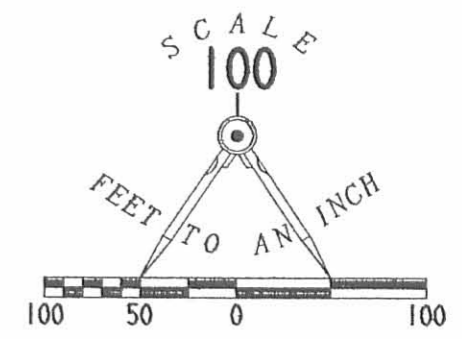
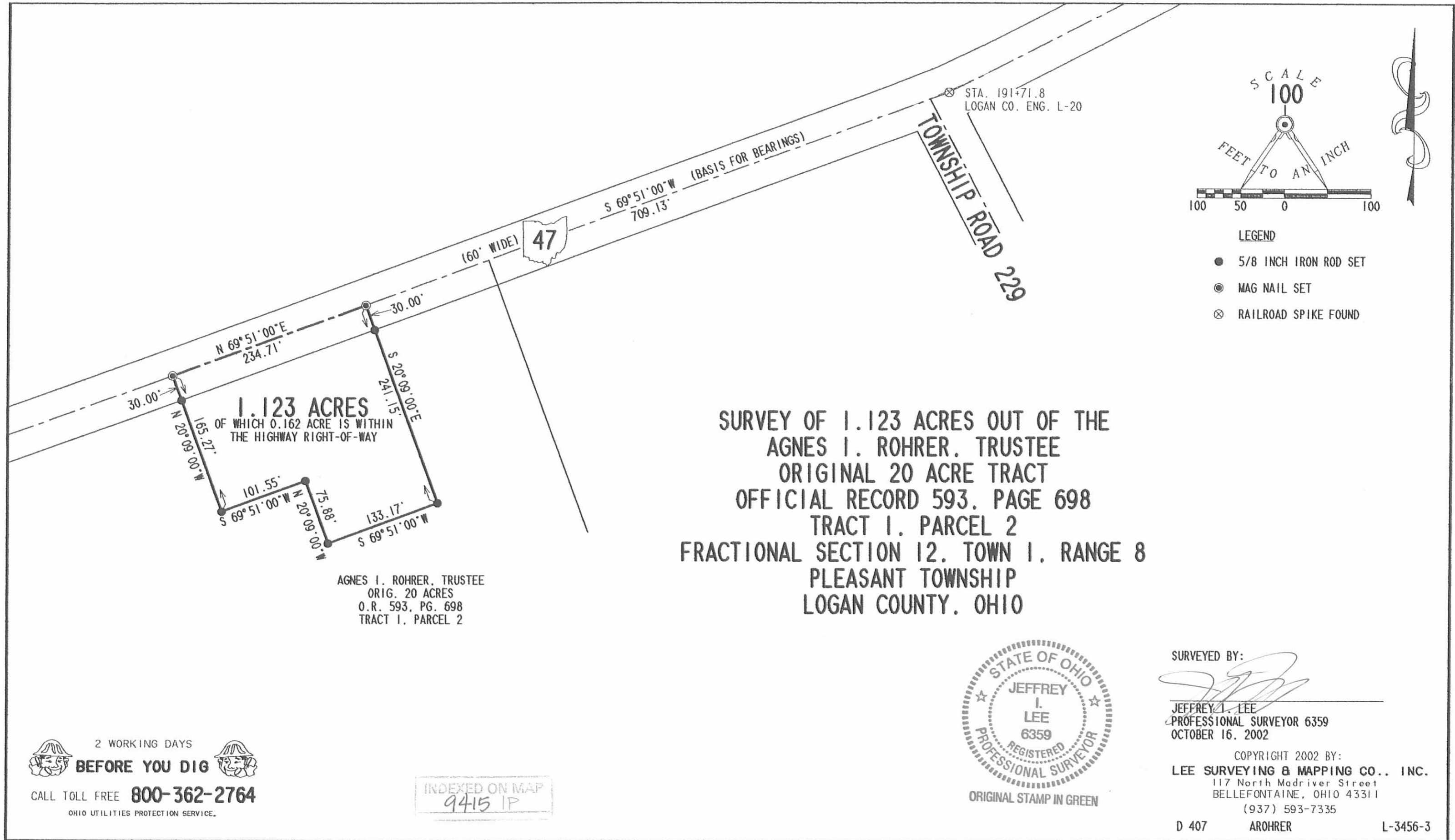
ORIGINAL STAMP IN GREEN

Description prepared by:

Jeffrey I. Lee  
Professional Surveyor 6359  
October 16, 2002



L-3456

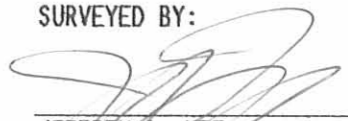


- LEGEND
- 5/8 INCH IRON ROD SET
  - ⊙ MAG NAIL SET
  - ⊗ RAILROAD SPIKE FOUND

SURVEY OF 1.123 ACRES OUT OF THE  
 AGNES I. ROHRER, TRUSTEE  
 ORIGINAL 20 ACRE TRACT  
 OFFICIAL RECORD 593, PAGE 698  
 TRACT 1, PARCEL 2  
 FRACTIONAL SECTION 12, TOWN 1, RANGE 8  
 PLEASANT TOWNSHIP  
 LOGAN COUNTY, OHIO

AGNES I. ROHRER, TRUSTEE  
 ORIG. 20 ACRES  
 O.R. 593, PG. 698  
 TRACT 1, PARCEL 2



SURVEYED BY:  
  
 JEFFREY I. LEE  
 PROFESSIONAL SURVEYOR 6359  
 OCTOBER 16, 2002

COPYRIGHT 2002 BY:  
 LEE SURVEYING & MAPPING CO., INC.  
 117 North Madriver Street  
 BELLEFONTAINE, OHIO 43311  
 (937) 593-7335

2 WORKING DAYS  
**BEFORE YOU DIG**  
 CALL TOLL FREE **800-362-2764**  
 OHIO UTILITIES PROTECTION SERVICE.

INDEXED ON MAP  
 9415 IP