

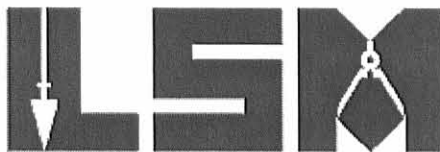
12-31-12



Lee Surveying and Mapping Co., Inc.

Land Surveys • Topography • Subdivisions • Construction Layout

117 N. Madriver St.
Bellefontaine OH 43311



Phone: (937) 593-7335
Fax: (937) 593-7444
surveys@lsminc.us

GRANDSTAFF AS TRUSTEE 71.087 ACRES

Lying in Section 3, Town 2, Range 14, Pleasant Township, Logan County, Ohio.

Being all of the James R. Grandstaff as Trustee 73 acre tract as deeded and described in Official Record 377, Page 383, Tract I of the Logan County Records of Deeds and being more particularly described as follows:

Beginning on a MAG nail set on the intersection of the center-lines of Ohio Route 47 and Township Road 208.

THENCE, with the center-line of Township Road 208 (40 feet wide), the following two courses:

S 74°-00'-37"E, a distance of 809.62 feet to a 1 inch square iron bar found.

S 03°-43'-55"W, a distance of 2005.52 feet to a stone found on the south line of the northeast quarter of Section 3.

THENCE, with the south line of the northeast quarter of Section 3 and the center-line of Township Road 208 and said center-line extended and the north line of the James R. Grandstaff as Trustee 42.56 acre tract (O.R. 377, Pg. 383, Tract III, Parcel 2), N 85°-01'-42"W, a distance of 1504.00 feet to a 5/8 inch iron rod set on the center of Section 3, passing a 5/8 inch iron rod set at 111.71 feet

THENCE, with the west line of the northeast quarter of Section 3 and the east line of the James R. Grandstaff as Trustee 80 acre tract (O.R. 377, Pg. 383, Tract III, Parcel 1), N 03°-52'-09"E, a distance of 1919.98 feet to a MAG nail set on the intersection of the center-lines of Ohio Route 47 and Township Road 208, passing a 5/8 inch iron rod set at 1888.48 feet.

THENCE, with the center-line of Ohio Route 47 (60 feet wide), N 76°-06'-21"E, a distance of 742.75 feet to the point of beginning

Containing 71.087 acres, of which 1.840 acres are within the highway rights-of-way.

Property is subject to any and all previous easements and rights-of-way of record.

The basis for bearings is the center-line of Ohio Route 47, being N 76°-06'-21"E, and all other bearings are from angles and distances measured in a field survey by Lee Surveying and Mapping Co., Inc. on December 17, 2012.

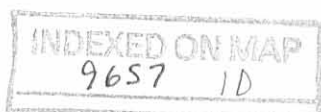
Description prepared by:

William K. Bruce
Professional Surveyor 7437
December 19, 2012

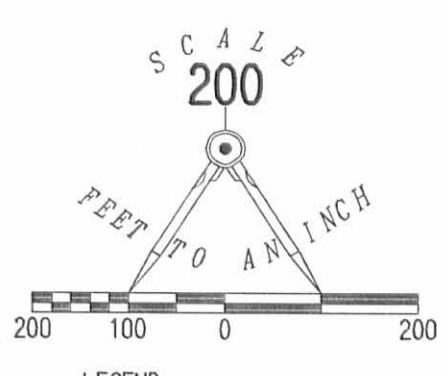


ORIGINAL STAMP IN GREEN

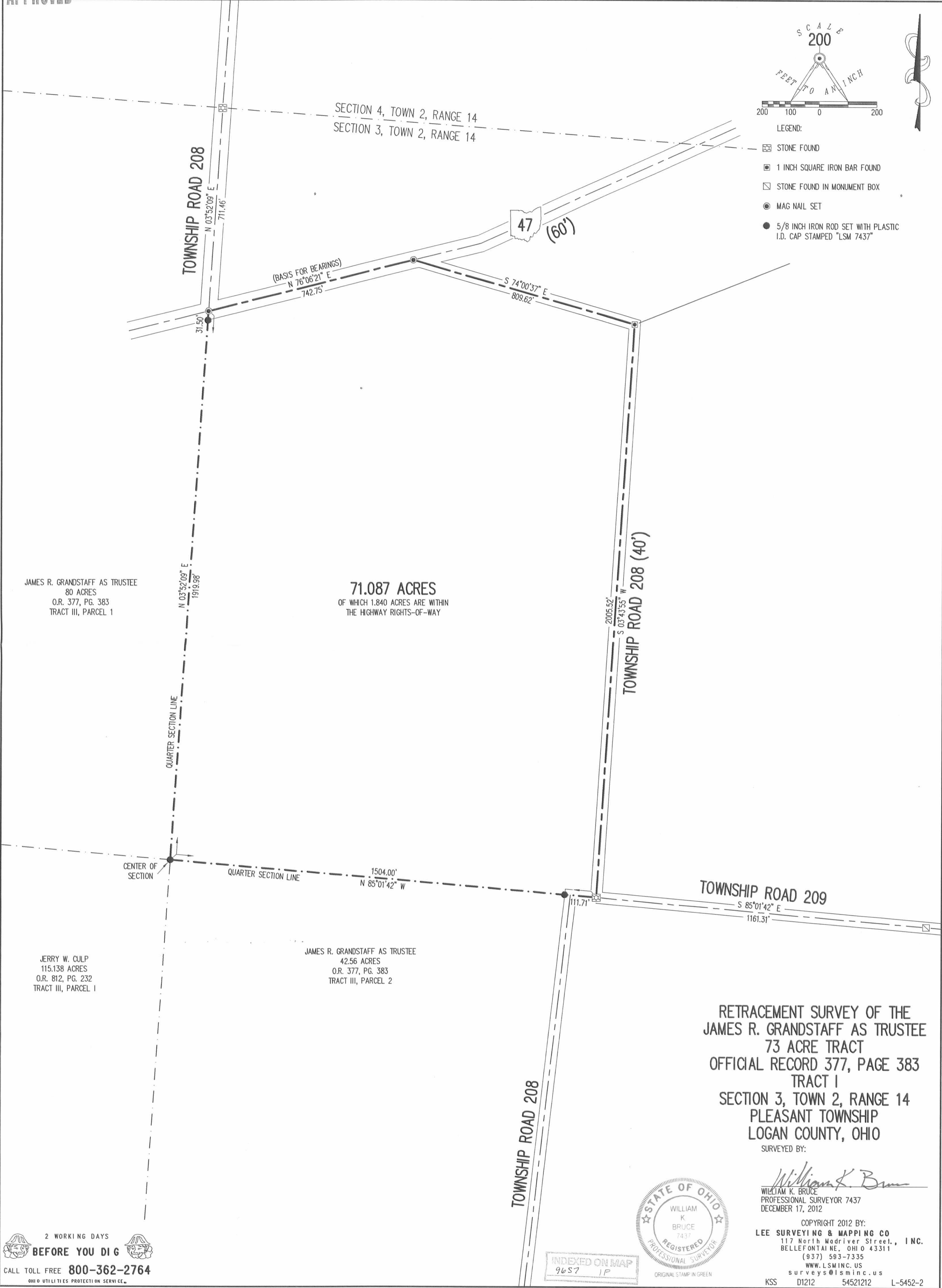
54521212



APPROVED



- LEGEND:
- ☒ STONE FOUND
 - 1 INCH SQUARE IRON BAR FOUND
 - STONE FOUND IN MONUMENT BOX
 - MAG NAIL SET
 - 5/8 INCH IRON ROD SET WITH PLASTIC I.D. CAP STAMPED "LSM 7437"



JAMES R. GRANDSTAFF AS TRUSTEE
 80 ACRES
 O.R. 377, PG. 383
 TRACT III, PARCEL 1

71.087 ACRES
 OF WHICH 1.840 ACRES ARE WITHIN
 THE HIGHWAY RIGHTS-OF-WAY

JERRY W. CULP
 115.138 ACRES
 O.R. 812, PG. 232
 TRACT III, PARCEL 1

JAMES R. GRANDSTAFF AS TRUSTEE
 42.56 ACRES
 O.R. 377, PG. 383
 TRACT III, PARCEL 2

RETRACEMENT SURVEY OF THE
 JAMES R. GRANDSTAFF AS TRUSTEE
 73 ACRE TRACT
 OFFICIAL RECORD 377, PAGE 383
 TRACT I
 SECTION 3, TOWN 2, RANGE 14
 PLEASANT TOWNSHIP
 LOGAN COUNTY, OHIO

SURVEYED BY:
William K. Bruce
 WILLIAM K. BRUCE
 PROFESSIONAL SURVEYOR 7437
 DECEMBER 17, 2012



COPYRIGHT 2012 BY:
 LEE SURVEYING & MAPPING CO.
 117 North Madriver Street., INC.
 BELLEFONTAINE, OHIO 43311
 (937) 593-7335
 WWW.LSMINC.US
 surveys@lsminc.us
 KSS D1212 54521212 L-5452-2

2 WORKING DAYS
 BEFORE YOU DIG
 CALL TOLL FREE 800-362-2764
 OHIO UTILITIES PROTECTION SERVICE

INDEXED ON MAP
 9657 1P