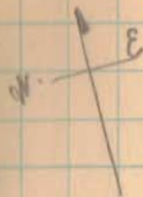
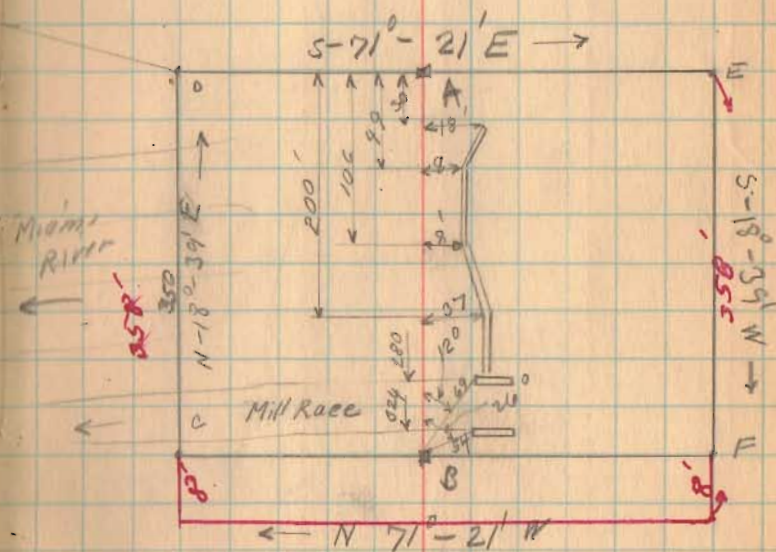


Quincy Dam (Continued)



S-73°33' E →



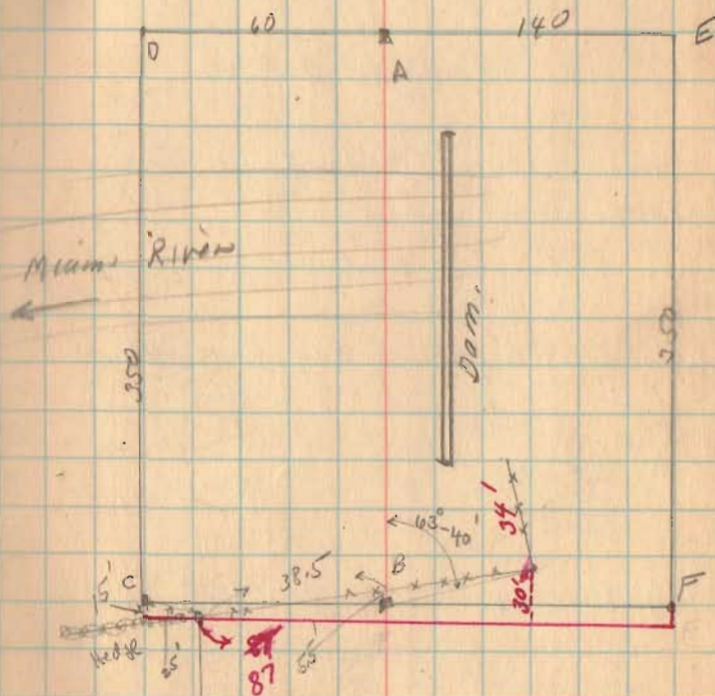
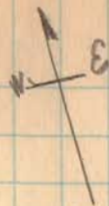
Line moved south
as shown. Nov. 28-1930

120

Quincy Dam (Continued.)

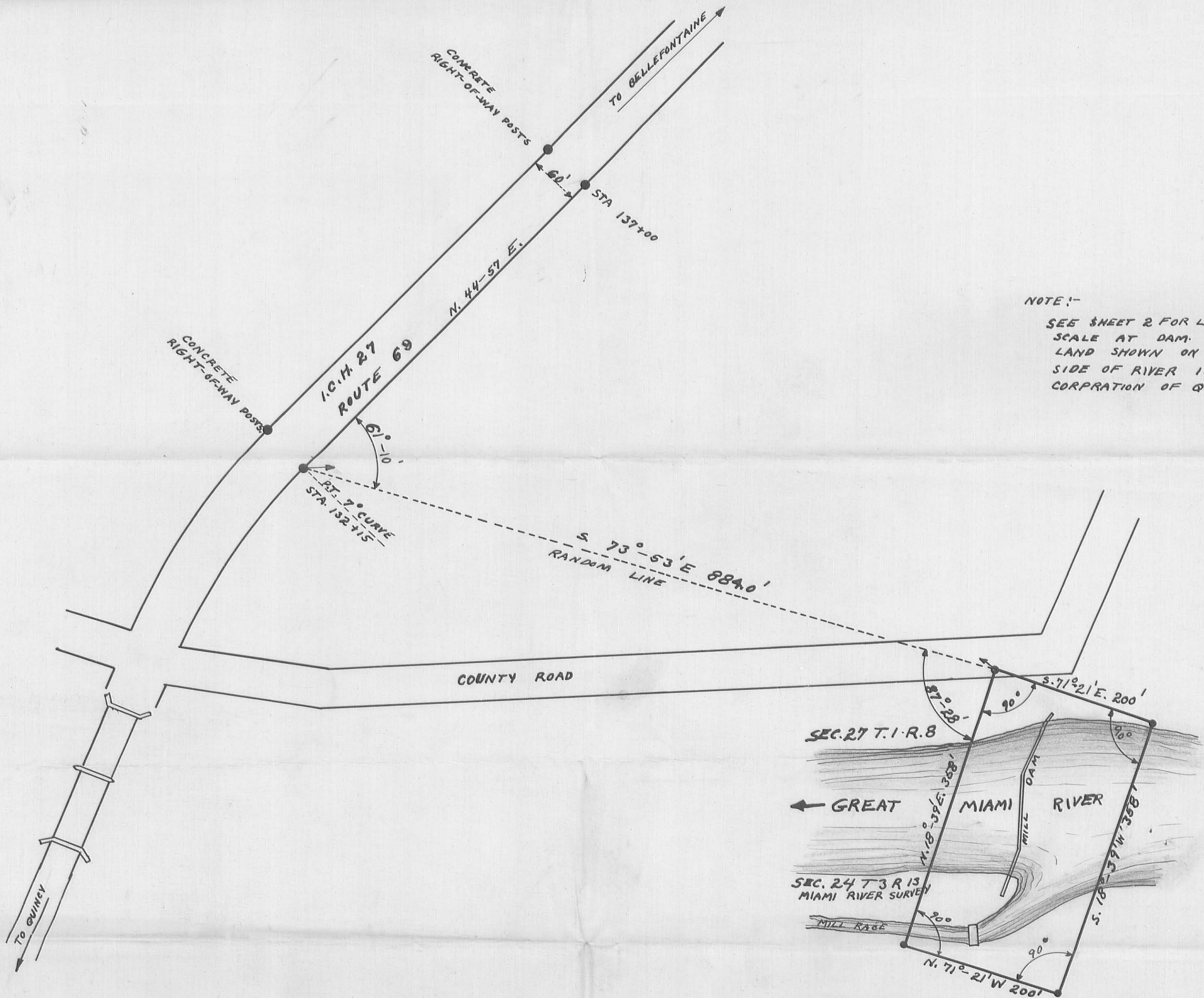
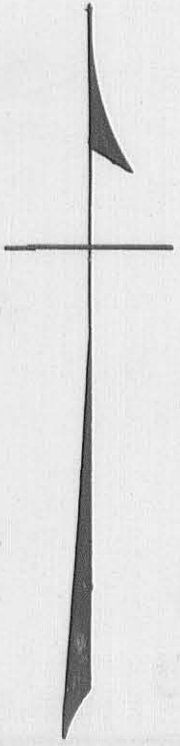
11-26-30

36



See Page 35

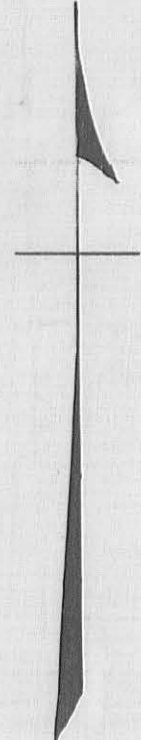
1224



NOTE:-
SEE SHEET 2 FOR LARGER
SCALE AT DAM.
LAND SHOWN ON SOUTH
SIDE OF RIVER IS IN
CORPORATION OF QUINCY.

QUINCY MILL DAM.
MIAMI TOWNSHIP
LOGAN COUNTY OHIO
1930
1" = 100'

INDEXED ON MAP.
(1224) P-1



S.73°-53'E

3/4" BOLT 24" LONG

90°

DRIVE TO RIVERSIDE PARK

B.M. CHISEL CROSS AT END OF DAM. ELEV. 966.73

B.G. ALLINGER

B.G. ALLINGER
S.13°-0'W
27'

S.71°-21'E 200.0'

12" ASH 62.5.0
15" SYCAMORE 0' 11.0
3/4" BOLT 24" LONG
60' BOLT HEAD DOWN

SEC. 27 T.1 R.8

N.18°-39'E. 358.0'

GREAT

MIAMI RIVER

STONE AND CONCRETE DAM.

WATER LEVEL SHOWN
ELEV. 965.7
NOV. 26, 1930.

S.18°-39'W. 358.0'

B.G. ALLINGER

SEC. 24 T.3 R.13
MIAMI RIVER SURVEY

NOTE:-
SEE SHEET 1 FOR LOCATION
FIELD NOTES IN LOGAN
COUNTY SURVEYOR'S FIELD BOOK
512 PAGES 34-35-36
SURVEYED NOV. 26, 1930
F.F. WRIGHT
J.S. CRANE.

MILL RACE

CHAS. WEBB.

1" BOLT 36" LONG
BOLT HEAD DOWN

B.G. ALLINGER
N.88°-0'E. 87'

CHAS. WEBB

B.G. ALLINGER.
CHAS. WEBB

N.71°-21'W. 200.0'

90°

1" BOLT 30" LONG
BOLT HEAD DOWN

QUINCY MILL DAM.
MIAMI TOWNSHIP
LOGAN COUNTY OHIO

1930
1" = 20'

INDEXED ON MAP
(1224) 1/2

SHEET 2 OF 2 SHEETS.

