

**SURVEYOR'S CERTIFICATE**

The accompanying plat represents a subdivision of land in the Village of Quincy, Miami Township, Logan County, Ohio and being part of Section 23, T-3, R-13 of the Between the Miami Rivers Survey. The tract has an area of 1.53 acres in lots and 0.33 acre in streets, making a total of 1.86 acres. The dimensions are indicated in Feet and decimals of a Foot.

Dan E. Dodson  
Dan E. Dodson  
Surveyor in Training

E. K. Lore  
Approved by  
E. K. Lore  
Registered Surveyor  
No. 821

**DEDICATION**

Know all men by these presents that Murlie Douglas Mercer proprietor of the land indicated on the accompanying plat has authorized the platting of the same and does hereby dedicate the streets to the public use forever.

Randell Larson  
Witness

Shirlee A. Wilson  
Witness

Murlie Douglas Mercer

STATE OF California  
City and County of San Francisco SS

Be it remembered that on this 15<sup>th</sup> day of September in the year of our Lord One Thousand Nine Hundred and Fifty Four, before me, a Notary Public in and for said County, came Murlie Douglas Mercer grantor in the foregoing dedication and acknowledged the signing thereof to be her free and voluntary act.

Agnes Westra  
Notary Public  
October 25, 1956  
My Commission expires

**COUNTY ENGINEER'S OFFICE**

Approved this 19<sup>th</sup> day of November 1954.

E. K. Lore  
Logan County Engineer

**ACCEPTANCE**

The annexed plat was adopted by Ordinance Number 223 as an addition to the Village of Quincy, said Ordinance was passed at a regular meeting of the Village Council on the 2<sup>nd</sup> day of November 1954.

D. F. Davis  
Mayor

C. J. Myers  
Clerk

J. Lewis Plank  
President of Council

**AUDITOR'S OFFICE**

The within lots transferred this 19 day of November 1954.

Thomas J. Longbrake  
Auditor of Logan County

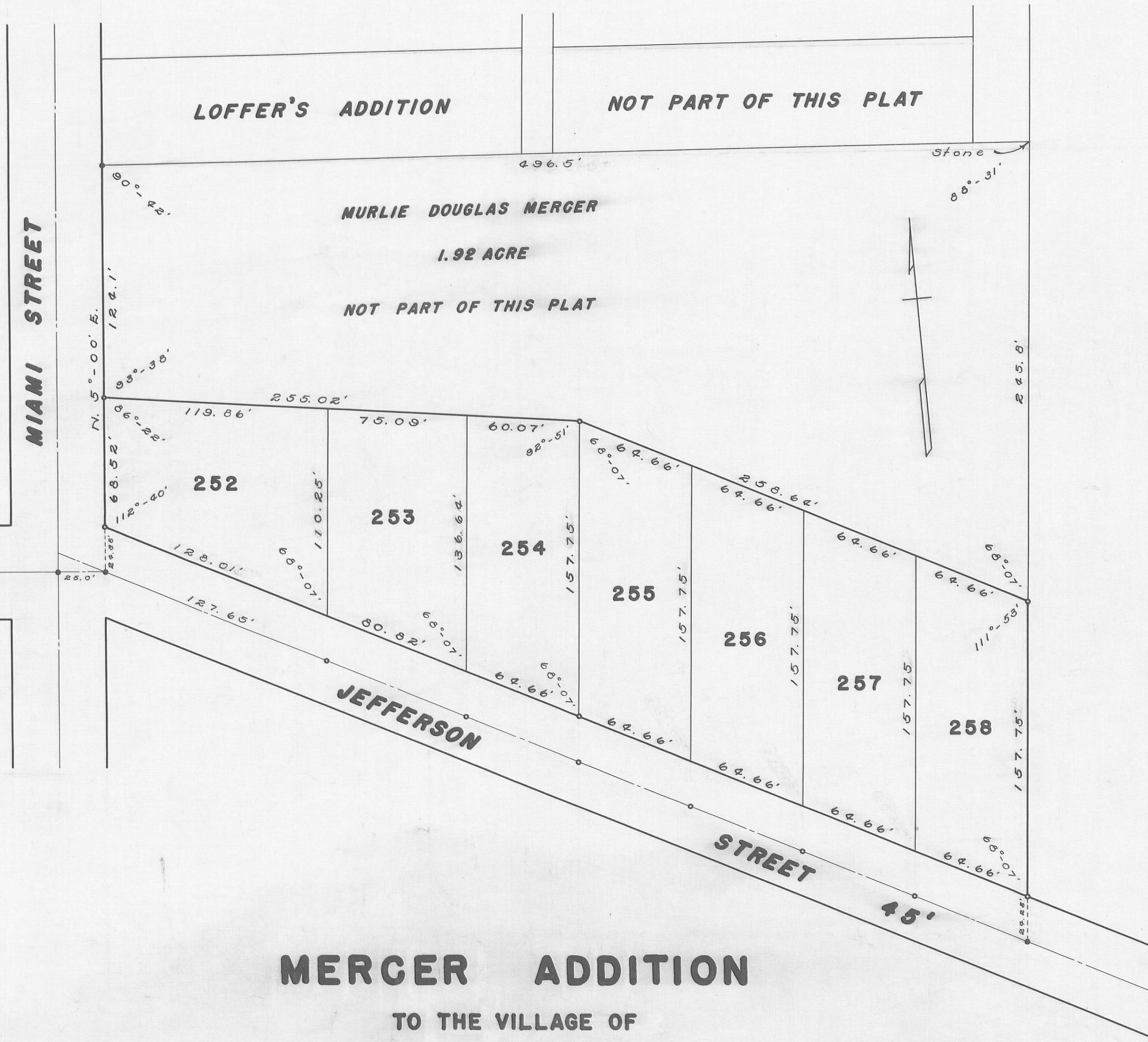
135897

**RECORDER'S OFFICE**

Received for record at 10:55 o'clock A.M. on this 19<sup>th</sup> day of November 1954.

Recorded in Plat Book D, Volume 4, Page 1.

Rosanna L. Strayer  
Recorder of Logan County



**MERCER ADDITION**

TO THE VILLAGE OF

**QUINCY**

MIAMI TOWNSHIP LOGAN COUNTY, OHIO

SECTION 23 T-3 R-13 B.M.R.S.

SCALE 1" = 40'

1954

COUNTY

3138

INDEX NO.

INDEXED ON MAP

• = Iron Pins Set  
• = Iron Pins Found  
2" x 2" x 18" wooden stakes  
placed at each lot corner



MERCER DESCRIPTION  
SECTION 23, T-3, R-13  
QUINCY, OHIO

April 28, 1960

The following described real estate situated in the Village of Quincy, Miami Township, Logan County, Ohio and being part of Section 23, Town 3, Range 13 of the Between the Miami Rivers Survey and more particularly described as follows:

Beginning at an iron pin at the northeast corner of Mercer Addition as shown and designated in the Logan County Recorders Plat Book C, Volume 4, page 1, said iron pin also being the northeast corner of Lot 258 of said Mercer Addition; thence with the north line of said Mercer Addition N. 62°-20' W. 258.6 feet to an iron pin, said pin being the northwest corner of Lot 255; thence continuing with said north line N. 81°-22' W. 280.0 feet to the center of Miami Street, passing an iron pin at the northwest corner of Lot 252 at 255.0 feet; thence with the center line of said Miami Street N. 5°-00' E. 122.2 feet to the south line of Loffer's Addition; thence with said south line S. 85°-42' E. 521.5 feet to a stone in the west line of Leo P. Stewart's 51.30 acre tract, said stone also being the southeast corner of said Loffer's Addition; thence with said Stewart's west line S. 5°-47' W. 245.8 feet to the place of beginning.

Containing 1.92 of an acre more or less.

INDEXED ON MAP

3138 ID