

Part of John N. Leaches Addition
to
Quincy, Ohio

Copied from Plat Book "A"
INDEXED ON MAP Vol. 2. Pg. 103

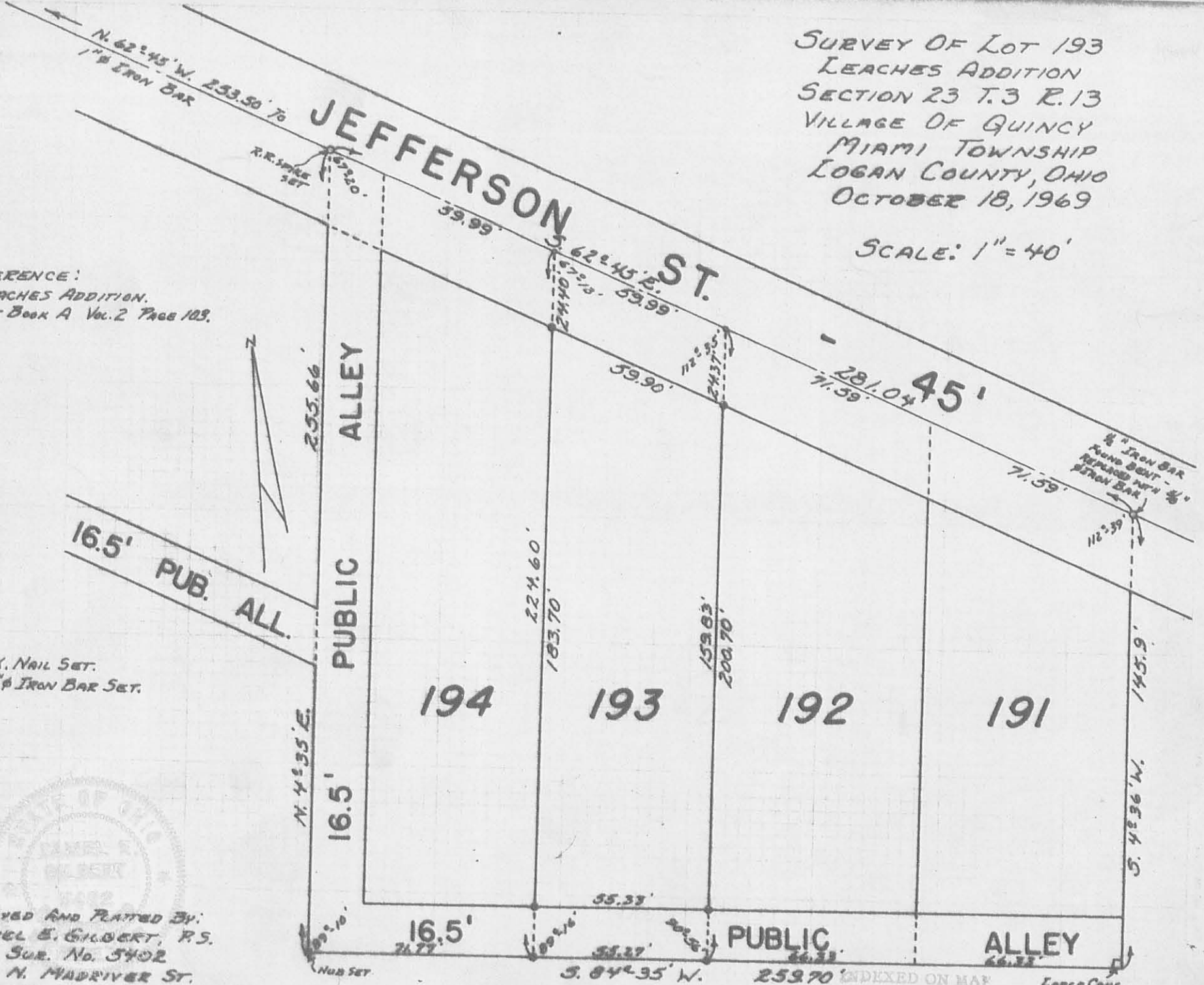
4588 IP

QUINCY, OHIO
 JOHN N. LEACHES ADDITION
 PLAT BOOK "A"
 VOL. 2, PAGE 103

SURVEY OF LOT 193
 LEACHES ADDITION
 SECTION 23 T.3 R.13
 VILLAGE OF QUINCY
 MIAMI TOWNSHIP
 LOGAN COUNTY, OHIO
 OCTOBER 18, 1969

SCALE: 1" = 40'

REFERENCE:
 LEACHES ADDITION,
 PLAT BOOK A Vol. 2 PAGE 103.

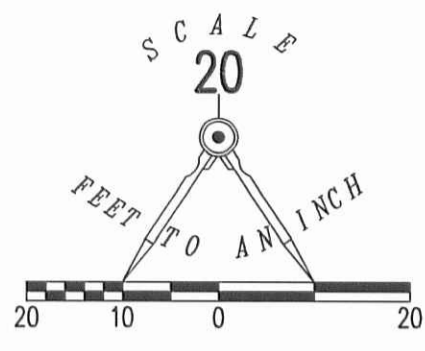
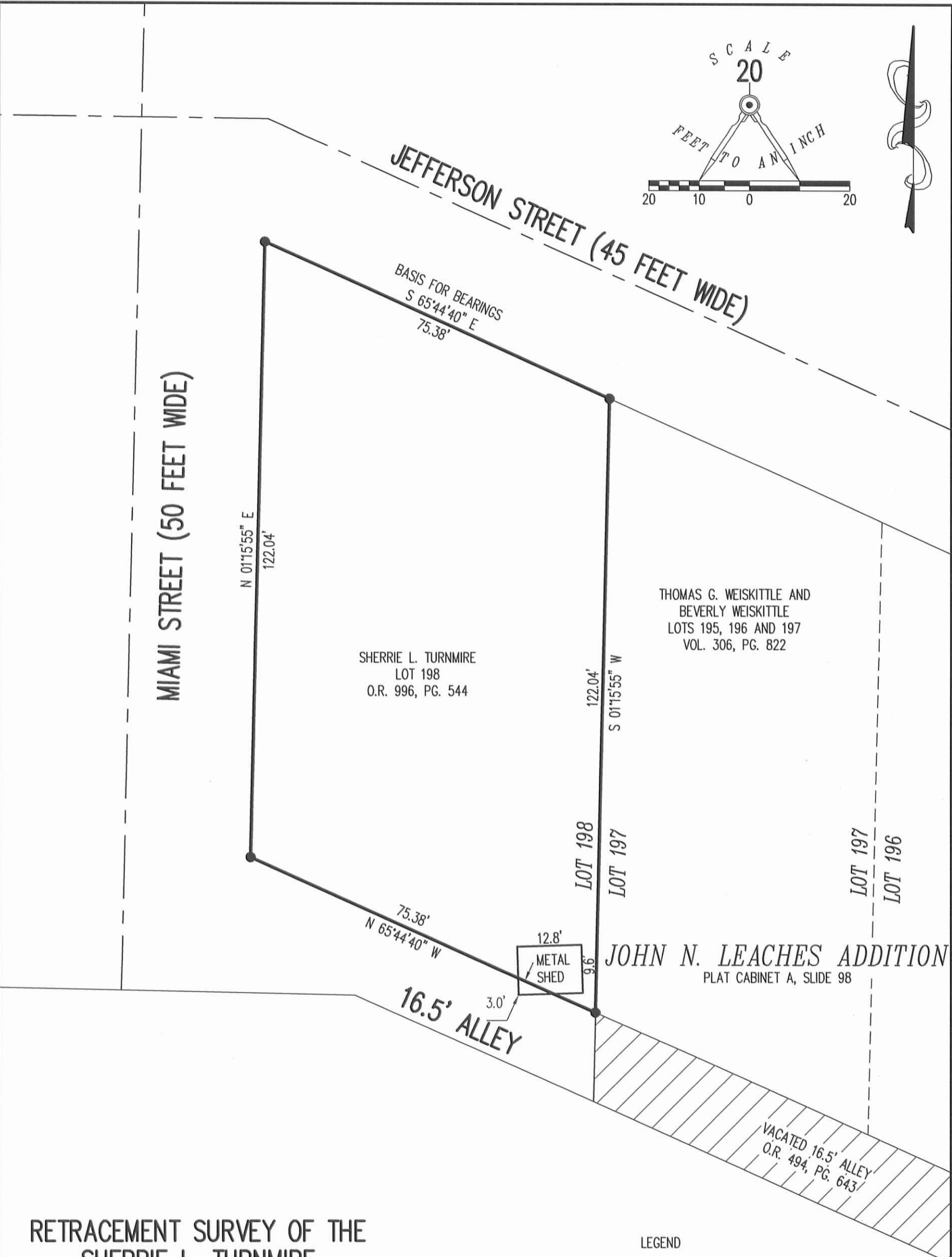


o - P.K. Nail Set.
 ● - 1/8" Iron Bar Set.



SURVEYED AND PLATED BY:
 DANIEL E. GILBERT, P.S.
 REG. SUR. No. 5402
 428 N. MADRIVER ST.
 BELLEFONTAINE, OHIO 43311

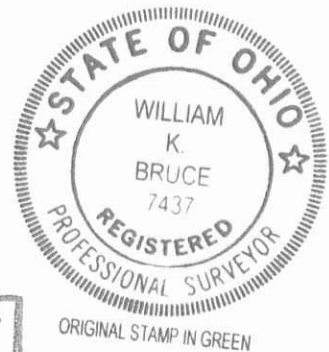
4588 2P



RETRACEMENT SURVEY OF THE
SHERRIE L. TURNMIRE
LOT 198
OFFICIAL RECORD 996, PAGE 544
JOHN N. LEACHES ADDITION
PLAT CABINET A, SLIDE 98
VILLAGE OF QUINCY
SECTION 23, TOWN 3, RANGE 13
MIAMI TOWNSHIP
LOGAN COUNTY, OHIO

LEGEND
● 5/8 INCH IRON ROD SET WITH
PLASTIC I.D. CAP STAMPED "LSM7437"

SURVEYED BY:
William K. Bruce
WILLIAM K. BRUCE
PROFESSIONAL SURVEYOR 7437
MARCH 14, 2013



COPYRIGHT 2013 BY:
LEE SURVEYING & MAPPING CO., INC.
117 North Madriver Street
BELLEFONTAINE, OHIO 43311
(937) 593-7335
WWW.LSMINC.US
surveys@lsminc.us

2 WORKING DAYS
BEFORE YOU DIG
CALL TOLL FREE **800-362-2764**
OHIO UTILITIES PROTECTION SERVICE

INDEXED ON MAP
4588 3P