

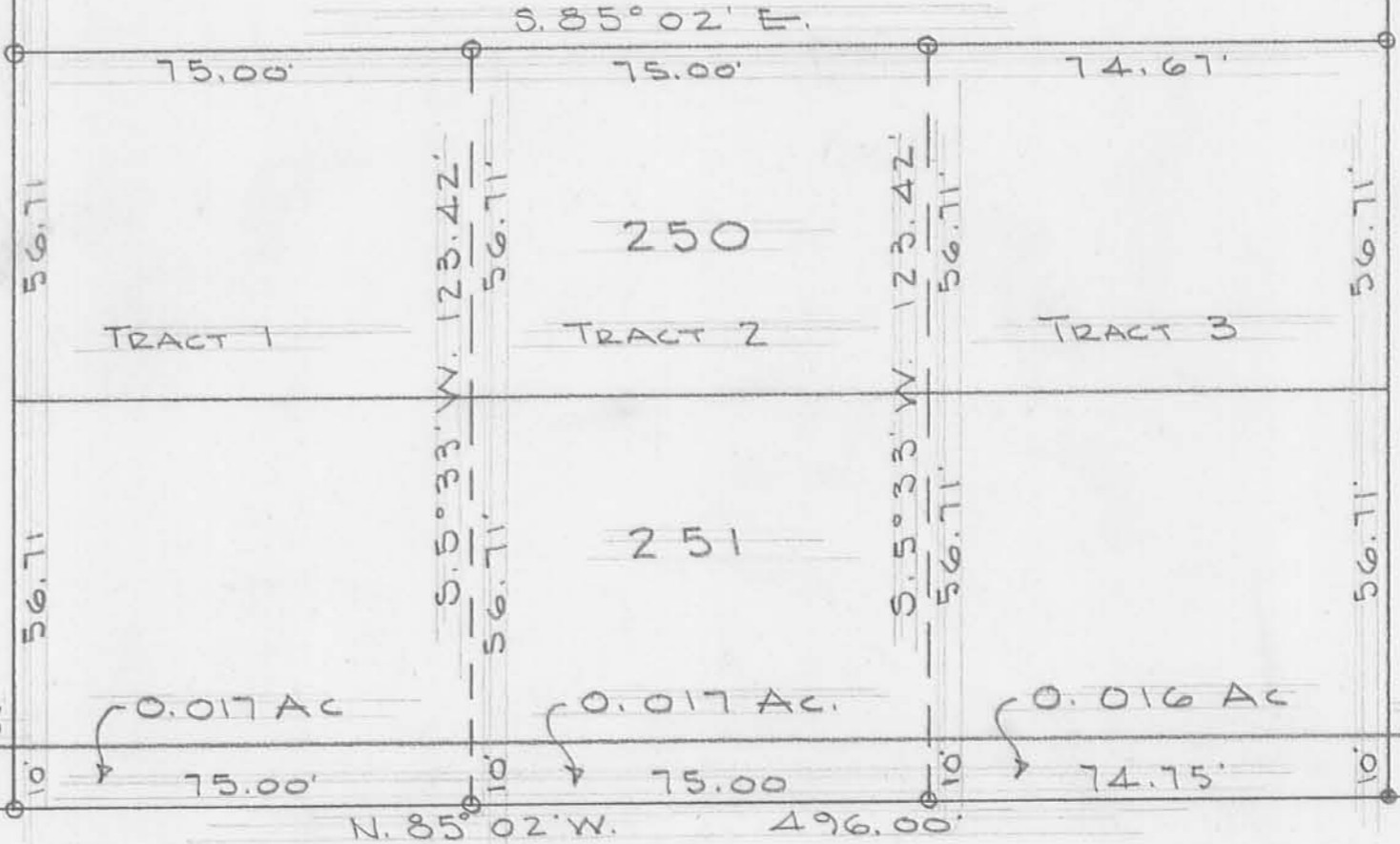
S. 5° 35' W.  
EAST LINE MIAMI ST.

SURVEY OF  
LOTS 250-251  
QUINCY, OHIO  
JAN. 6, 1973  
SCALE 1" = 30'

0 = 5/8"  $\phi$  BAR SET



N. 5° 33' E.  
16 1/2' ALLEY



245

C.A. RICHARDS  
0.05 AC.

1"  $\phi$  BAR  
FOUND

SOUTH LINE LOFFERS ADDITION

S. 85° 02' E. 224.75'

16.50'

0.017 AC.

0.017 AC.

0.016 AC.

30.00'

Cor.  
Post

N. 85° 02' W. 496.00'

FOSTER TO VILLAGE OF QUINCY 0.23 AC.

N. 85° 02' W. 495.62'

DAN L. DODSON  
REG. SURVEYOR 4270  
BELLEFONTAINE, OHIO

30' STREET

S. 5° 30' W.

S. 6° 19' W.

S-126

5350

S-126