



Lee Surveying and Mapping Co.



Farm Surveys • Lot Surveys • Topography • Subdivisions • Construction Layout

143 EAST COLUMBUS AVENUE
BELLEFONTAINE, OHIO 43311

(513) 593-7335

JEFFREY I. LEE, P.S.

RUTH BELL (0.201 ACRE)

Lying in Section 23, Town 3, Range 13, Village of Quincy, Miami Township, Logan County, Ohio.

Being out of the Ruth C. Bell 0.39 acre tract as deeded and described in Official Record 104, Page 707 of the Logan County Records of Deeds and being more particularly described as follows:

Beginning at a 1/2 inch pipe found at the east right-of-way line of Miami Street (49.5 feet wide) and the south right-of-way line of the Conrail property (formerly the C.C.C. & St. L. Railroad) and the northwest corner of the Thomas Montgomery 0.38 acre tract (Vol. 367, Pg. 960).

THENCE, with the southerly line of the railroad, N 81°-44'-06" E, a distance of 229.80 feet to a 5/8 inch iron rod set at THE TRUE POINT OF BEGINNING, passing the northwest corner of the Ruth Bell property at 161.43 feet.

THENCE, with the southerly line of the railroad, N 81°-44'-06" E, a distance of 68.37 feet to a 5/8 inch iron rod found.

THENCE, with the west line of the Dennis R. Williams 2.11 acre tract (O.R. 43, Pg. 892), S 00°-58'-32" W, a distance of 136.31 feet to a 1/2 inch pipe found.

THENCE, with the north line of the Gerald Davis 0.20 acre tract (Vol. 384, Pg. 424, Tr I), S 89°-57'-11" W, a distance of 67.37 feet to a 5/8 inch iron rod set.

THENCE, N 00°-55'-19" E, a distance of 126.53 feet to the point of beginning.

Containing 0.201 acre.

The basis for bearings is based upon the center-line of Miami Street being N 00°-26'-00" E, and all other bearings are from angles and distances measured in a field survey by Lee Surveying and Mapping Company on October 31, 1991.

Description prepared by:



Jeffrey I. Lee
Jeffrey I. Lee
Professional Surveyor 6359
November 4, 1991

L 1950

ORIGINAL STAMP IN GREEN

INDEXED ON MAP
8637 1D

CONRAIL PROPERTY
FORMERLY C.C.C. & ST. L. R.R.

RAILROAD STREET (?) NO DEDICATION
INFORMATION AVAILABLE

N 81°44'06"E
68.37'

N 81°44'06"E
161.43'

68.37'

RUTH C. BELL
ORIG. 0.39 AC.
O.R. 104, PG. 707

0.189 AC.

0.201 AC.

DENNIS R. WILLIAMS
2.11 AC.
O.R. 43, PG. 892

THOMAS MONTGOMERY
0.38 AC.
VOL. 367, PG. 960

N 00°51'33"E
116.99'

N 00°55'19"E
126.53'

S 00°58'32"W
136.31'

N 00°26'00"E

67.37'

67.37'

S 89°57'11"W

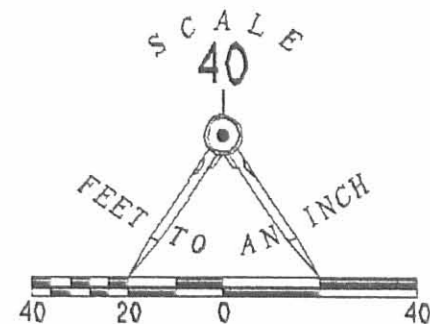
S 89°57'11"W

GERALD R. DAVIS
0.17 AC.
VOL. 384, PG. 424, TR. 11

0.20 AC.
TR. 1

53.84'

MIAMI STREET (49.5')



LEGEND

- 1/2" PIPE FOUND
- ⊙ 1" PIPE FOUND
- 5/8" I. ROD FOUND
- PK NAIL SET
- 5/8" I. ROD SET



SURVEY OF 0.201 ACRE OUT OF THE
RUTH C. BELL 0.39 ACRE TRACT
O.R. 104, PG. 707
SECTION 23, TOWN 3, RANGE 13
VILLAGE OF QUINCY
MIAMI TOWNSHIP, LOGAN COUNTY, OHIO



SURVEYED BY:

Jeffrey L. Lee
JEFFREY L. LEE
PROFESSIONAL SURVEYOR 6359
OCTOBER 31, 1991

LEE SURVEYING & MAPPING CO.
143 East Columbus Avenue
BELLEFONTAINE, OHIO 43311
(513) 593-7335

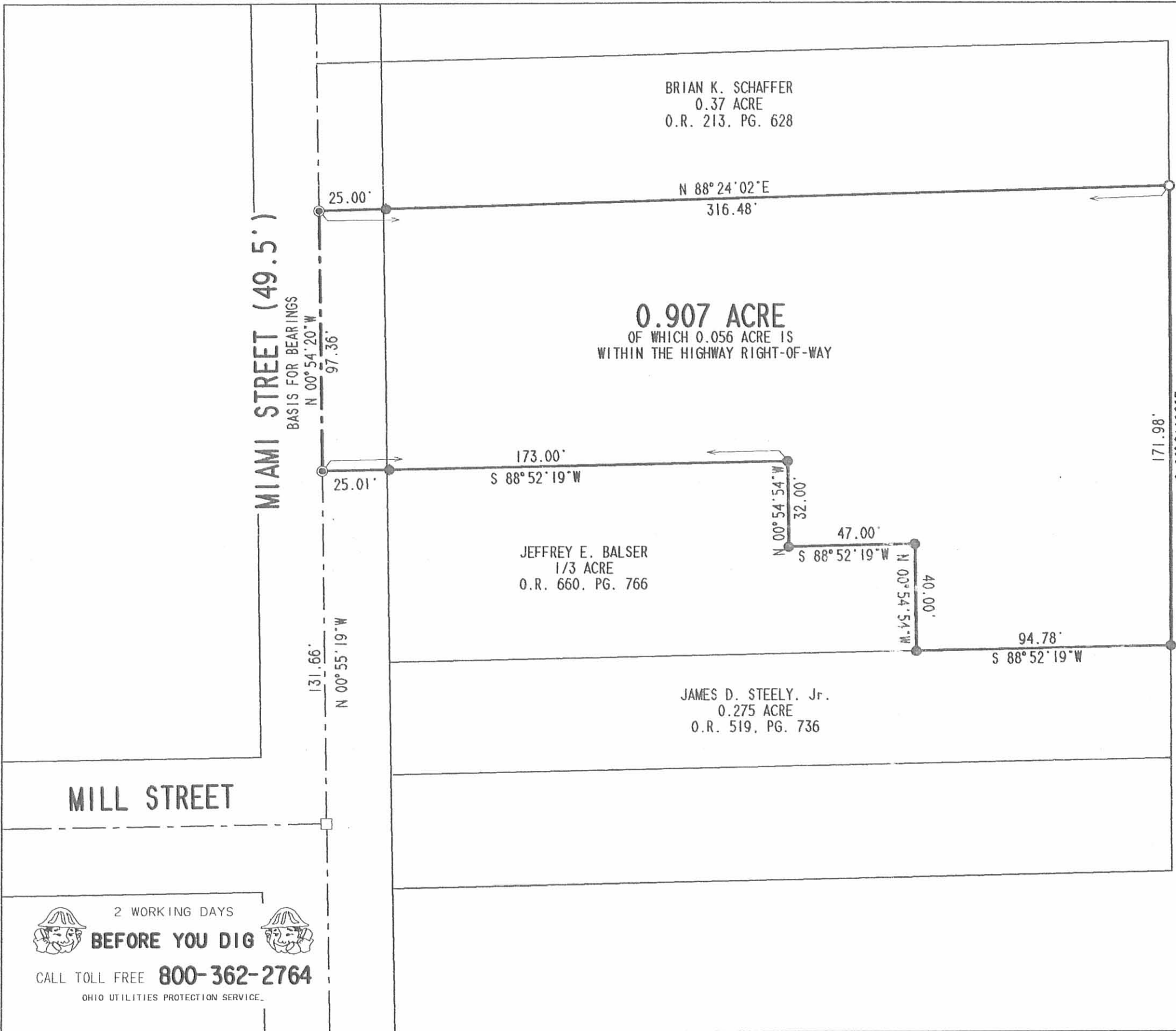
INDEXED ON MAP
8637 1P

ORIGINAL STAMP IN GREEN

DISK 56 RUTHBELL

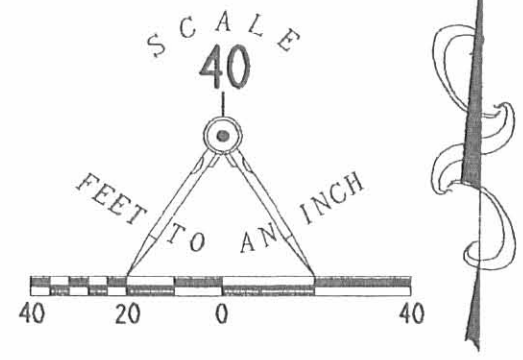
L 1950-4

REC'D 9-11-03 SWY OK



LEGEND

- 5/8 INCH IRON ROD SET
- ⊙ MAG NAIL SET
- 1 INCH IRON PIPE FOUND



LRB ENTERPRISES INC.
2.11 ACRES
O.R. 558. PG. 729

**RETRACEMENT SURVEY OF
THE DOUGLAS M. COPAS
0.88 ACRE TRACT
(0.907 ACRE BY THIS SURVEY)
OFFICIAL RECORD 559. PAGE 765
SECTION 23. TOWN 3. RANGE 13
VILLAGE OF QUINCY
MIAMI TOWNSHIP
LOGAN COUNTY, OHIO**



SURVEYED BY:
[Signature]
JEFFREY I. LEE
PROFESSIONAL SURVEYOR 6359
SEPTEMBER 3, 2003

ORIGINAL STAMP IN GREEN

COPYRIGHT 2003 BY:
LEE SURVEYING & MAPPING CO., INC.
117 North Madriver Street
BELLEFONTAINE, OHIO 43311
(937) 593-7335

D 411 CLSWART2 L-3656-3

2 WORKING DAYS
BEFORE YOU DIG
CALL TOLL FREE **800-362-2764**
OHIO UTILITIES PROTECTION SERVICE.

INDEXED ON MAP
063729



Conrail RR

RR Conc. End Post

$N 79^{\circ} 54' 37'' E$ 205.84'

30.44'

Newcomb

Lot 1

79.68'

$N 89^{\circ} 38' 51'' E$ 173.80'

109.35'

Lot 2

74.24'

174.43'

74.25'

Davis

Lot 3

450.88'

74.24'

12' Utility Easement

74.25'

175.05'

$N 00^{\circ} 21' 06'' W$

Lot 4

74.24'

74.24'

175.67'

Copus

Lot 5

74.24'

74.24'

176.30'

stone
Fol.

Lot 6

74.24'

74.24'

176.93'
206.93'

Stiles

30.00'

74.24'

71.93'

$N 00^{\circ} 50' 08'' W$

1701.06'

Upton

Wood End Post

Cox

Section 23, Town C, Range 13, Village of Quincy, Logan County Ohio. Survey of Williams property May, 1988



LEGEND

- 5/8" ϕ Bar found
- 5/8" ϕ Bar set

Drawn by

INDEXED ON MAP 2637 3P

Leslie H. Geeslin
Dec 10 1988
Reg. Sur. # 5248