

Lee Surveying and Mapping Co., Inc.

Land Surveys • Topography • Subdivisions • Construction Layout

117 N. Madriver St.
Bellefontaine OH 43311



Phone: (937) 593-7335
Fax: (937) 593-7444

ALLINGER 19.030 ACRES

Lying in Section 24, Town 3, Range 13 B.M.R.S., Village of Quincy, Miami Township, Logan County, Ohio.

Being out of the Ronald R. Allinger and Sara L. Allinger, Trustees 101 acre tract as deeded and described in Official Record 608, Page 466 of the Logan County Records Deeds and being more particularly described as follows:

Beginning at a stone with broken tiles found at the southwest corner of the east 1/2 of fractional Section 24, Town 3, Range 13 B.M.R.S.

THENCE, with the half section line and the east line of the William L. Brandyberry 1.639 acre tract (O.R. 306, Pg. 956) and the east line of the Bernie L. Stewart 2.66 acre tract (Vol. 374, Pg. 644), N 00°-56'-29"E, a distance of 869.07 feet to a 5/8 inch iron rod set.

THENCE, with the southeast bank of the Great Miami River, N 54°-54'-05"E, a distance of 173.52 feet to a 5/8 inch iron rod set.

THENCE, with the southeast bank of the Great Miami River, N 56°-31'-01"E, a distance of 435.31 feet to a 5/8 inch iron rod set.

THENCE, S 21°-31'-42"E, a distance of 1318.37 feet to a MAG nail set on the center-line of County Highway 63 (60 feet wide), passing a 5/8 inch iron rod set at 1285.66 feet.

THENCE, with the south line of Section 24, N 89°-00'-00"W, a distance of 1003.26 feet to the point of beginning, passing a MAG nail set at 271.17 feet and passing a 5/8 inch iron rod set at 528.67 feet.

Containing 19.030 acres of which 0.273 acre is within the highway right-of-way.

The basis for bearings is the south line of Section 24, being N 89°-00'-00"W, and all other bearings are from angles and distances measured in a field survey by Lee Surveying and Mapping Co., Inc. on April 15, 2004.

Description prepared by:



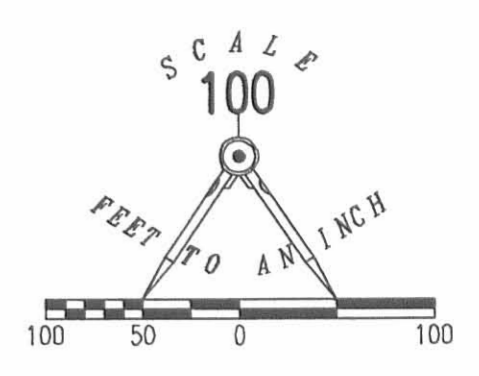
ORIGINAL STAMP IN GREEN

Jeffrey I. Lee
Jeffrey I. Lee
Professional Surveyor 6359
April 20, 2004

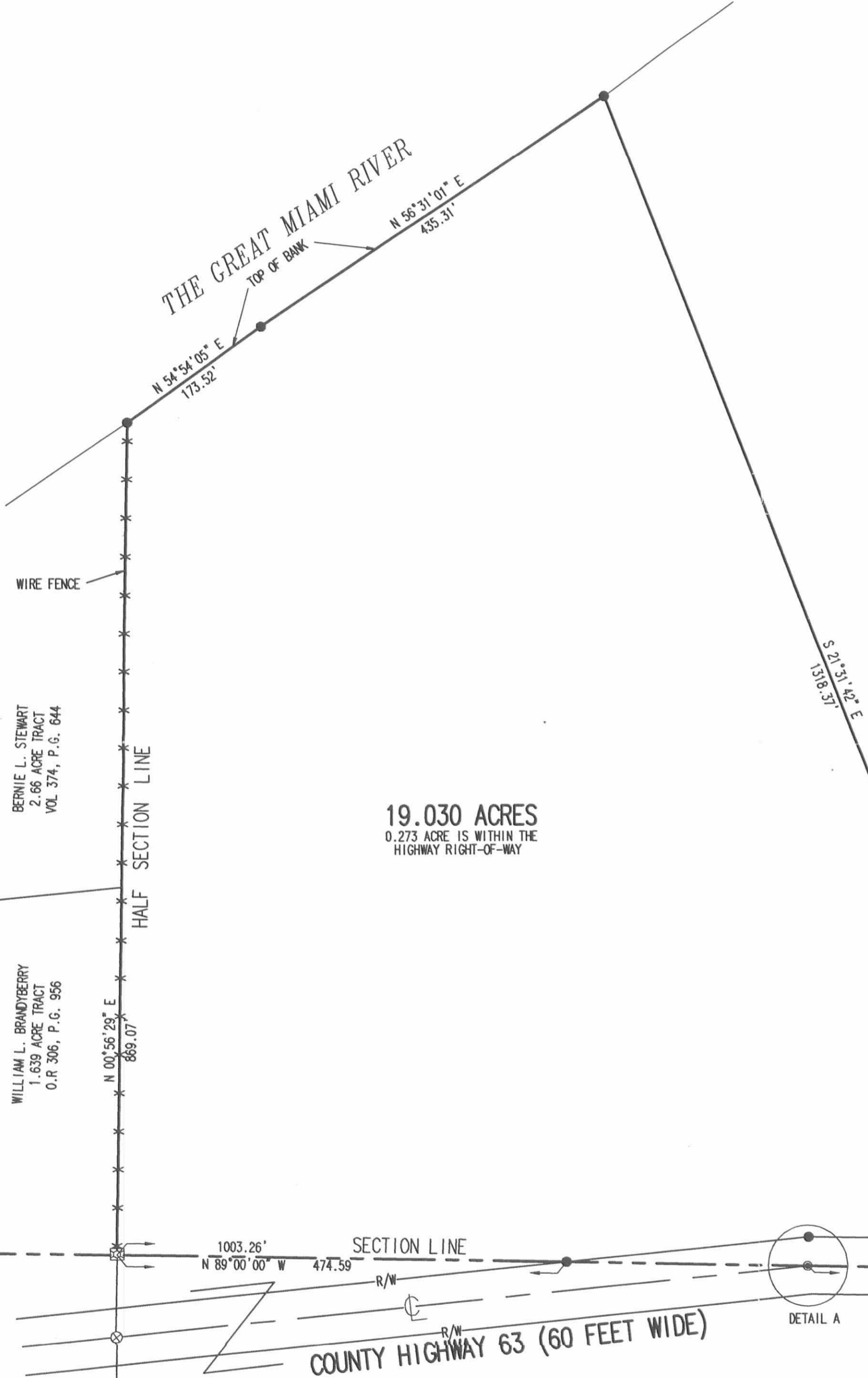
L-3799



REC'D 4-27-04 smj/ak



- LEGEND
- 5/8 INCH IRON ROD SET
 - ⊠ STONE WITH BROKEN TILES FOUND
 - ⊗ RAILROAD SPIKE FOUND
 - MAG NAIL SET
 - 1/2 IRON ROD FOUND



ANTHONY LEE UPTON
ORIGINAL 152.47 ACRE TRACT
O.R. 269, P.G. 633
O.R. 129, P.G. 619

A SURVEY OF A 19.030 ACRE TRACT OUT OF THE
RONALD R. ALLINGER AND SARA L. ALLINGER, TRUSTEES
ORIGINAL 101 ACRE TRACT
OFFICIAL RECORD 608, PAGE 466
SECTION 24, TOWN 3, RANGE 13 B.M.R.S.
VILLAGE OF QUINCY
MIAMI TOWNSHIP
LOGAN COUNTY, OHIO



SURVEYED BY:
Jeffrey I. Lee
JEFFREY I. LEE
PROFESSIONAL SURVEYOR 6359
APRIL 15, 2004

COPYRIGHT 2004 BY:
LEE SURVEYING & MAPPING CO., INC.
117 North Modriver Street
BELLEFONTAINE, OHIO 43311
(937) 593-7335

2 WORKING DAYS
BEFORE YOU DIG
CALL TOLL FREE 800-362-2764
OHIO UTILITIES PROTECTION SERVICE.

INDEXED ON MAP
9476 IP

ORIGINAL STAMP IN GREEN

ADW/KSR D412 3799044.DWG L-3799-2