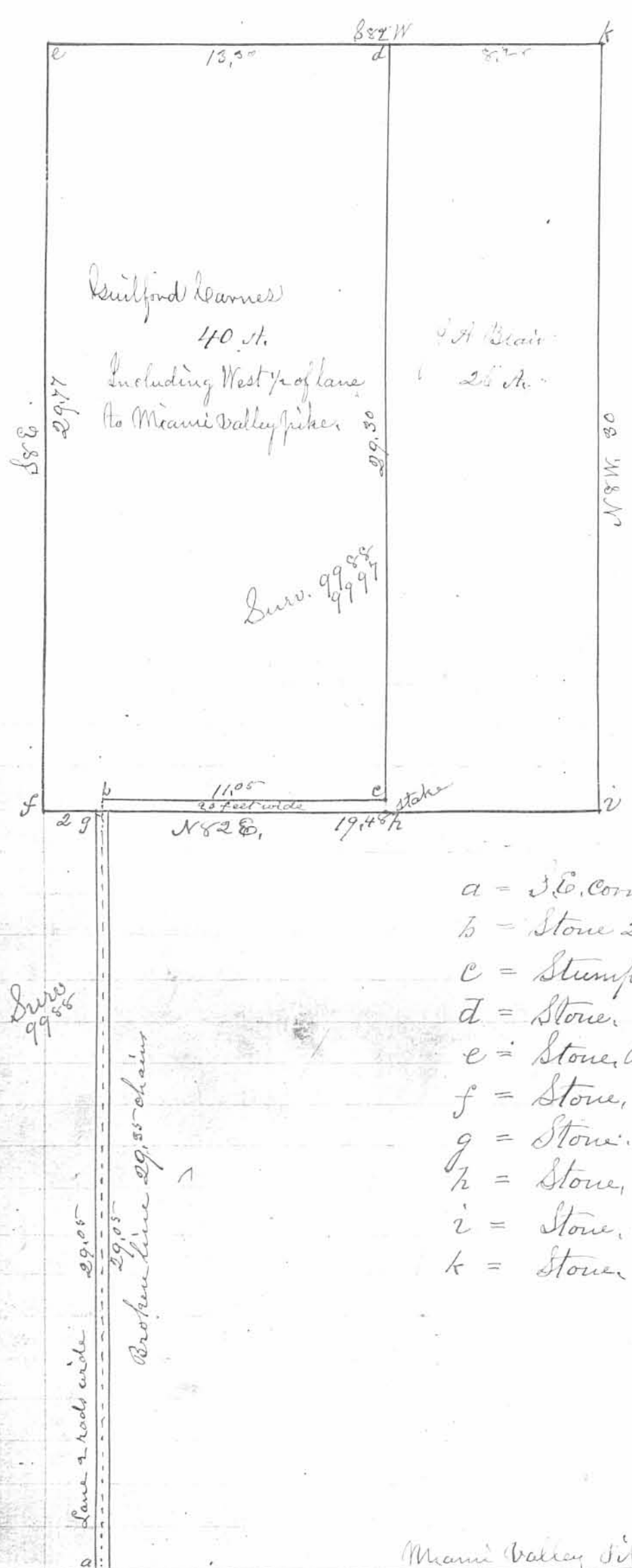


Part of Military Survey No. 9988 + 9988 + 9997
Surveyed for Thomas Gore January 6th 1887

403



Richland Twp.

- a = S.E. corner of McVeals land
- b = Stone 20' N. Sur. line
- c = Stump.
- d = Stone. No tree near
- e = Stone, Beech 14 N 84 1/2 E. 7 links.
- f = Stone, Beech 14 S 23 1/2 E. 28 links.
- g = Stone.
- h = Stone.
- i = Stone, Ash N 45 W. 6 l.
- k = Stone, Large Red oak S 66 1/2 W. 29 1/2 l. old u.

Survey 9955

Lane 2 rods wide 29.05
Broken line 29.55 chains

Miami Valley Pike

Surveyed as above January 6th 1887 by
W. W. McCormick, Dep.
for J. T. Buchanan, County

INDEXED ON MAP
403

1P

REC'D 6-30-04 SML

Lee Surveying and Mapping Co., Inc.

Land Surveys • Topography • Subdivisions • Construction Layout

117 N. Madriver St.
Bellefontaine OH 43311



Phone: (937) 593-7335
Fax: (937) 593-7444

EVANS 25.664 ACRES

Lying in Virginia Military Survey 9988-9997, Richland Township, Logan County, Ohio.

Being all of the Gerald Evans 26 acre tract as deeded and described in Official Record 39, Page 115 of the Logan County Records of Deeds and being more particularly described as follows:

Beginning at a 1 inch square metal bolt found at the the P.I. of the curve also at the intersection of center-lines of Ohio Route 273 (60 feet wide) and County Highway 97 (60 feet wide).

THENCE, with the center-line of Ohio Route 273, N 83°-13'-00"E, a distance of 1234.73 feet to a 1 inch square iron bar found at the TRUE POINT OF BEGINNING.

THENCE, with the east line of the Douglas W. Bleininger 1.62 acre tract (O.R. 259, Pg. 507) and the Eldon Zimmerman 32.52 acre tract (Tract II) and 35 acre tract (Tract I) (Vol. 202, Pg. 34), N 7°-00'-47"W, a distance of 1935.74 feet to a 8 inch square concrete post found, passing a 5/8 inch iron rod set at 30.00 feet and a 5/8 inch iron rod set at 1915.74 feet.

THENCE, with the south line of Wayne K. Detling 39.113 acre tract (Tract A I-I) (O.R. 264, Pg. 601), N 83°-17'-04"E, a distance of 747.29 feet to a 5/8 inch iron rod found.

THENCE, with the east line of the said 39.113 acre tract, N 6°-28'-52"W, a distance of 1937.65 feet to a stone found.

THENCE, with the south line of the Lester L. Snyder 23.68 acre tract (Tract I) (Vol. 396, Pg. 529), N 83°-02'-25"E, a distance of 538.71 feet to a stone found.

THENCE, with the west line of the Wayne K. Detling 265.876 acre tract (O.R. 251, Pg. 725), S 6°-01'-18"E, a distance of 1960.07 feet to a 5/8 inch iron rod set.

THENCE, with the north lines of said 265.876 acre tract and the Brooks R. Pool, 36.321 acre tract (O.R. 152, Pg. 726), S 83°-17'-04"W, a distance of 1237.07 feet to a 5/8 inch iron rod set.

THENCE, with the west line of the said 36.321 acre tract, S 7°-00'-47"E, a distance of 1915.70 feet to a MAG nail set, passing a 5/8 inch iron rod set at 1885.70 feet.

THENCE, with the center-line of Ohio Route 273, S 83°-13'-00"W, a distance of 33.00 feet to the point of beginning.

Containing 25.664 acres of which 0.023 acre is within the highway right-of-way.

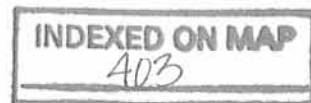
The basis for bearings is the center-line of Ohio Route 273 being N 83°-13'-00"E, and all other bearings are from angles and distances measured in a field survey by Lee Surveying and Mapping Co., Inc. on June 23, 2004.



ORIGINAL STAMP IN GREEN

Description prepared by:

Jeffrey I. Lee
Professional Surveyor 6359
June 29, 2004



2306064

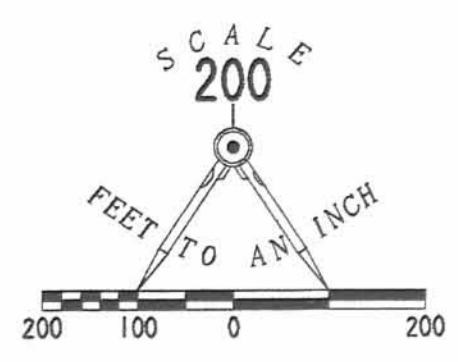
2D

REC'D 6-30-04 SMY/AL

INDEXED ON MAP
403 2P

2 WORKING DAYS
BEFORE YOU DIG
CALL TOLL FREE **800-362-2764**
OHIO UTILITIES PROTECTION SERVICE.

LESTER L. SNYDER
23.68 ACRES
VOL. 396, PG. 529
TRACT I



- LEGEND**
- 1" SQUARE METAL BOLT FOUND
 - ▣ 1" SQUARE IRON BAR FOUND
 - ⊠ STONE FOUND
 - ⊞ 8" SQUARE CONCRETE POST FOUND
 - 5/8" IRON ROD SET
 - ⊙ MAG NAIL SET
 - 5/8 INCH IRON ROD FOUND

WAYNE K. DETLING
39.113 ACRE TRACT
O.R. 264, PG. 601
TRACT A 1-1

GERALD EVANS
26 ACRE TRACT
O.R. 39, PG. 115

WAYNE K. DETLING
265.876 ACRE TRACT
O.R. 251, PG. 725

25.664 ACRES
0.023 ACRE IS WITHIN
THE HIGHWAY RIGHT-OF-WAY

BROOKS R. POOL
36.321 ACRES
O.R. 152, PG. 726

WAYNE K. DETLING
265.876 ACRE TRACT
O.R. 251, PG. 725

ELDON ZIMMERMAN
35 ACRES
VOL. 202, PG. 34
TRACT I

32.52 ACRES
VOL. 202, PG. 34
TRACT II

DOUGLAS W. BLEININGER
1.62 ACRE
O.R. 259, PG. 507

**A RETRACEMENT SURVEY OF THE
GERALD EVANS 26 ACRE TRACT
OFFICIAL RECORD 39, PAGE 115
VIRGINIA MILITARY SURVEY 9988-9997
RICHLAND TOWNSHIP
LOGAN COUNTY, OHIO**

REFERENCES
LOGAN COUNTY ENGINEER'S FILES:
L-13 4 OF 8 AND 5 OF 8
FIELD BOOK 570, PAGES 9-11
SURVEY BOOK C, PG. 174

SURVEYED BY:
Jeffrey I. Lee
JEFFREY I. LEE
PROFESSIONAL SURVEYOR 6359
JUNE 23, 2004



COPYRIGHT 2004 BY:
LEE SURVEYING & MAPPING CO.
143 East Columbus Avenue
BELLEFONTAINE, OHIO 43311
(513) 593-7335

COUNTY HIGHWAY 97 (60')

P.I. OF CURVE

273
(60 FEET WIDE)

