

O'Connor Survey Survey 9947

Nov 17, 1925

- A stone found
- B stone found
- E Auto Axle Driven
- C point in O Cement Road
- D Iron pin ^{driven} 2' East of East Edge of Pav.
- E Iron pin driven G' East of East edge pav.
- G Fence Post & stone found.
- H 1 1/2" Pipe found on line with A & G

(570)

INDEXED ON MAP

See Drawing R
Survey (988)

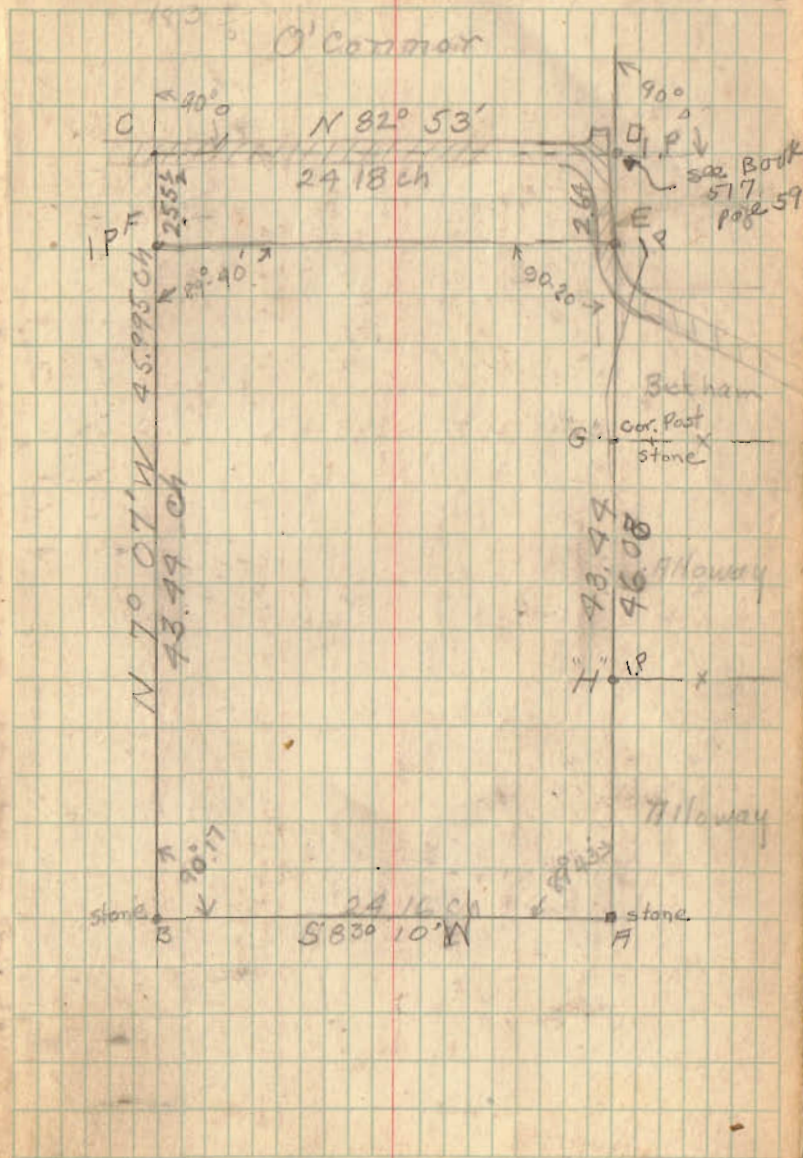
4344

182 20

W.H. Montgomery
John Herring
Spangler

12

ch. carriers
ch carries



N 82° 53 E

24.18

6.28 Acres

24.18
S 83° 10 W

N E

Iron pin
2'

Iron pin
6'

2.55 1/2
Iron pin

105 Acres

Noah Bickham

43.44 ch.

S 7° 07' E

Geo Alloway

Iron pipe x

Isaac Alloway

45.99 1/2 ch

43.44 ch

N 7° 07' W

stone

24.16 ch

S 83° 10 W

stone

VMS 9947 (988)
Richland Twp

Surveyed for John O'Connor Nov. 17. 1925

by

W. A. Montgomery. C.E.