

to Richmond
 Part # 59

Road # 105 Richland Tap.



Stakes placed 25' from &

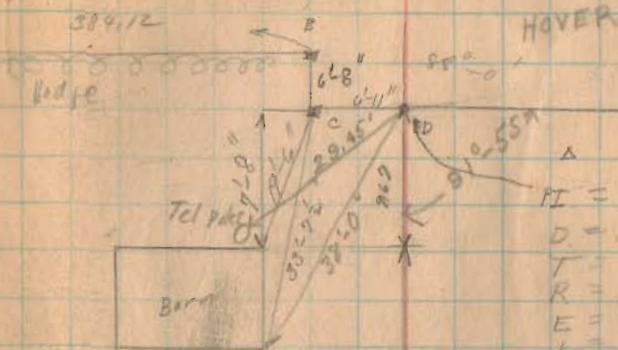
- A Hoaxer Teeth found
- B " " "
- C " " "
- D 1" Iron Placed.

Anna Moore Deed Vol. 106 Page 330
 Hoaxer Vol. 106 Page 331
 Hoaxer Vol. 96 Page 404
 Roster Vol. 123 Page 13

U-1

SPAT. 12 1927
 Cloudy
 Wight
 M. S. Kiroham
 Antrim
 Wickham

46



HOVER

$PI = 1+71.6$
 $D = 50^\circ$
 $T =$
 $R =$
 $E =$
 $L =$
 $AC =$
 $PT =$

See Book 579
 Page 24

SCHOOL LOT

1357

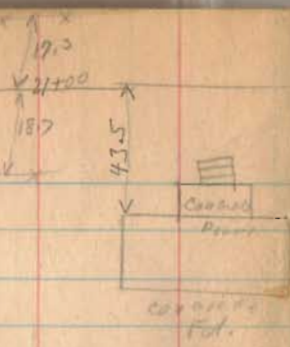
INDEXED ON MAP



See map at Richmond

2274613

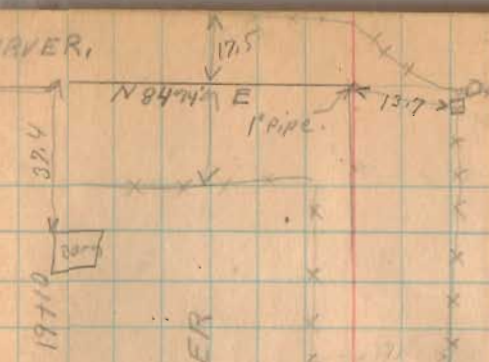
Roll 113



11790²⁵ Stone
found
see Survey 977
Richland Top
Drewer R.

1357
INDEXED ON MAP

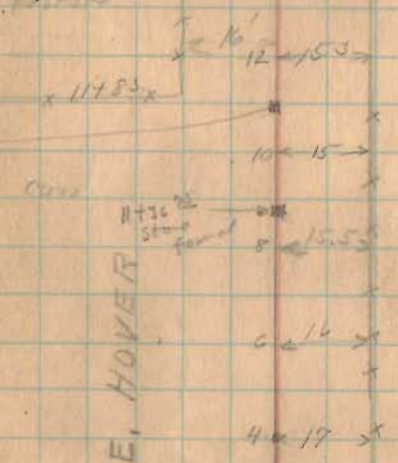
GRAVER,



S. E. HOVER

Little Miami River.

Pasture



S. E. HOVER

9-11-47
 $\Delta = 88^\circ - 0' 37''$
~~XXXXXX~~
 P.S. 16144
 $D = 30$
 $R = 191.71$
 $E = 75.4$
 $T = 189.5$
 $L = 193.35$
 $M.C. 191.59$
 $P.T. 177.53$

C. H. ROSTOFER

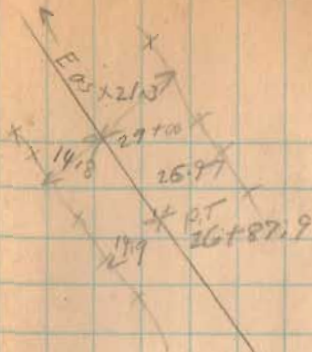
11722 x x x x
 School Lot.

#105

1351
INDEXED ON MAP

9-12-28

48



$$P.I = 25 + 88.6$$

$$P.C = 25 + 88.8$$

$$P.T = 26 + 87.9$$

$$\Delta = 21^{\circ} - 30'$$

$$D = 12^{\circ}$$

$$E = 8.54$$

$$R = 428.40$$

$$T = 908$$

$$L = 77.1$$

GARVER, L. D. POWERS

$$P.C = 21 + 47.6$$

$$P.T = 23 + 40.6$$

$$T = R. T. = 98.71$$

$$D = 15^{\circ}$$

$$R = 383.06$$

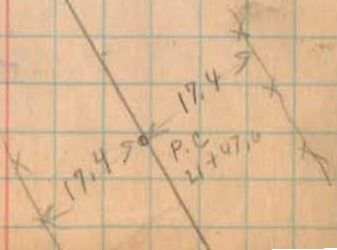
$$\Delta = 18^{\circ} - 55'$$

$$P.I = 22 + 46.3$$

$$L = 1.92$$

$$E = 12.55$$

S. E. HOVER.



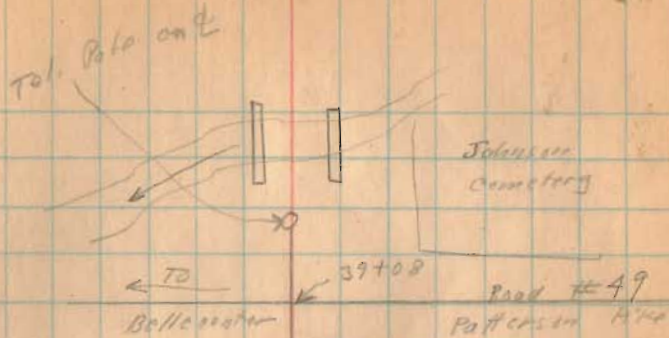
#105

INDEXED ON MAP

1351

9-12-29

411



S.E. HOVER

L.D. POWERS.

R.I. 30+00
 Δ 1°-25' R.