

## Commons Survey

Mar. 21<sup>st</sup> 1902

Start at stone E line Survey 9968

and S E  $\angle$  T E of Commons NE  $\angle$ Tray. With Biggs road N 7 $\frac{1}{4}$  WStart at stone planted S E  $\angle$  Tray

Bros of Common Bros.

N 7 $\frac{1}{4}$  W. with Survey line112 $\frac{1}{2}$  past N W  $\angle$  John Emeryand S W  $\angle$  Mary S. Wimer

1855.5 to stone corner surveys

9968, 13393, 9969 E 122 $\frac{7}{8}$ Thence N 7 $\frac{1}{4}$  W 210.7 (112 $\frac{7}{8}$  p.)

to stake in fence row at water line

Reservoir and line Ewing and

Common Bros in Survey, like

Start at S line Res. in Survey line

as above noted S 7 $\frac{1}{4}$  E 82.5 (50 p.)

Set stone corner to

Start 5' S of stone S E  $\angle$  13393Thence S 82 $\frac{3}{4}$  W.

at 2000 set N, S

Start at T W W  $\angle$  Tray and lineSurvey 13393. N 8 $\frac{1}{2}$  W. 660' T

and placed Lyon tree about 60 N.

Set stake in E. line Tray Bros. at 78645

= 113 p. N 8 $\frac{1}{2}$  W from stone S W  $\angle$  toTray Bros. being N 8 $\frac{1}{2}$  W 7.25' fromStake set for W W  $\angle$  Tray Bros.

1395  
INDEXED ON MAP

9-11-13



**APPROVED**

**LEGAL DESCRIPTION  
O CONNOR # 4A**

BEING A 10.00-FOOT WIDE TEMPORARY UTILITY EASEMENT OVER, THROUGH, AND ACROSS A 76.19 ACRE TRACT AND A 86 ACRE TRACT OF LAND OWNED BY O'CONNOR FARMS, INC. AS DESCRIBED IN DEED VOLUME 353, PAGE 663 TRACT III AND TRACT VII OF THE LOGAN COUNTY DEED RECORDS, SITUATE IN VIRGINIA MILITARY SURVEY 9968, RICHLAND TOWNSHIP, LOGAN COUNTY, OHIO AND BEING MORE FULLY DESCRIBED AS FOLLOWS:

Commencing for reference at a point at the intersection of the centerlines of Township Highway 38 and County Road 254 and being the northeast corner of said 86 acre tract of land owned by said O'Connor farms, Inc. and being the north east corner of Virginia Military Survey 9968;

thence, South 83°-48'-51" West, 20.00 feet, along the centerline of County Road 254 to a point;

thence, South 06°-00'-46" East, 30.00 feet, to a point on the west right-of-way line of Township Highway 38

thence, South 83°-48'-51" West, 10.00 feet, along the north right-of-way line of County Road 254 to a point and being the principal place of beginning of the easement herein conveyed;

thence, South 06°-00'-46" East, 2193.13 feet, parallel to the west right-of-way line of Township Highway 38 to a point;

thence, North 83°-59'-14" East, 10.00 feet, to a point on the west right-of-way line of Township Highway 38;

thence, South 06°-00'-46" East, 10.00 feet, along to the west right-of-way line of Township Highway 38 to a point;

thence, South 83°-59'-14" West, 20.00 feet, to a point;

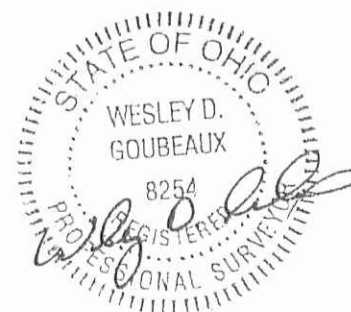
thence, North 06°-00'-46" West, 2203.10 feet, to a point on the south right-of-way line of County Road 254;

thence, North 83°-48'-51" East, 10.00 feet, along the south right-of-way of County Road 254 to the principal place of beginning.

Containing 0.508 acres more or less with all being subject to any legal highway and easements of record.

The bearings are based on NAD 83 CORS 96 Adjustment, Ohio North Zone, ODOT VRS CORS Network.

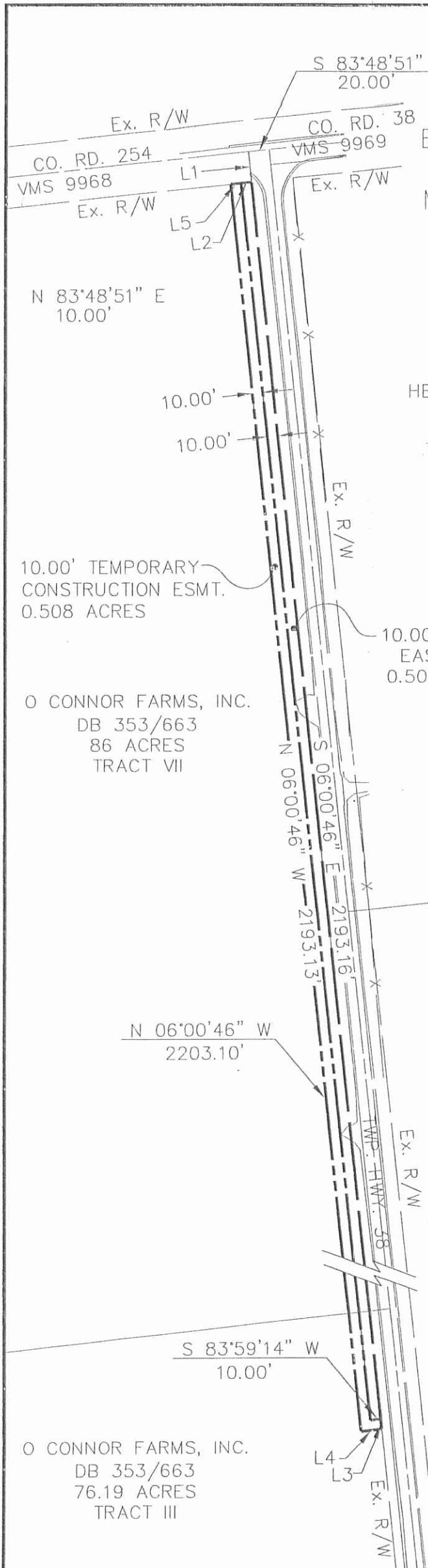
The above description was prepared by Wesley D. Goubeaux, Ohio Professional Surveyor Number 8254, based on a survey performed under his direction and dated August 8, 2013. For a pictorial example, see attached Exhibit "B".



INDEXED ON MAP  
1395 1D

# EXHIBIT B

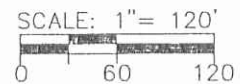
BEING A 10.00-FOOT WIDE UTILITY EASEMENT SITUATED IN VIRGINIA MILITARY SURVEY 9968, RICHLAND TOWNSHIP, LOGAN COUNTY, OHIO



LINE CHART		
LINE	LENGTH	BEARING
L1	30.00'	S 06°-00'-46" E
L2	10.00'	N 83°-48'-51" E
L3	10.00'	S 06°-00'-46" E
L4	20.00'	S 83°-59'-14" W
L5	10.00'	N 83°-48'-51" E



THE BEARINGS ARE BASED ON NAD 83 CORS 96 ADJUSTMENT, GEOID 2009 OHIO NORTH ZONE, ODOT VRS CORS NETWORK



**CHOICE ONE ENGINEERING**

440 E. HOEWISHER ROAD SIDNEY, OHIO 45365 (937) 497-0200 www.choiceoneengineering.com

203 W. LOVELAND AVENUE LOVELAND, OHIO 45140 (513) 239-8554

DATE: 08-08-2013
DRAWN BY: AJB
JOB NUMBER: LOGRIC1301
SHEET NUMBER 1 OF 1

O CONNOR FARMS, INC.  
DB 353/663  
76.19 ACRES  
TRACT III

O CONNOR FARMS, INC.  
DB 353/663  
86 ACRES  
TRACT VII

HELEN M. COPELAND  
9260 CR 38

10.00' TEMPORARY CONSTRUCTION ESMT.  
0.508 ACRES

10.00' UTILITY EASEMENT  
0.503 ACRES

INDEXED ON MAP  
1395 JP

9-11-13

 **APPROVED**

**LEGAL DESCRIPTION  
O CONNOR # 4**

BEING A 10.00-FOOT WIDE UTILITY EASEMENT OVER, THROUGH, AND ACROSS A 76.19 ACRE TRACT AND A 86 ACRE TRACT OF LAND OWNED BY O'CONNOR FARMS, INC. AS DESCRIBED IN DEED VOLUME 353, PAGE 663 TRACT III AND TRACT VII OF THE LOGAN COUNTY DEED RECORDS, SITUATE IN VIRGINIA MILITARY SURVEY 9968, RICHLAND TOWNSHIP, LOGAN COUNTY, OHIO AND BEING MORE FULLY DESCRIBED AS FOLLOWS:

Commencing for reference at a point at the intersection of the centerlines of Township Highway 38 and County Road 254 and being the northeast corner of said 86 acre tract of land owned by said O'Connor farms, Inc. and being the north east corner of Virginia Military Survey 9968;

thence, South 83°-48'-51" West, 20.00 feet, along the centerline of County Road 254 to a point;

thence, South 06°-00'-46" East, 30.00 feet, to a point on the west right-of-way line of Township Highway 38 and being the principal place of beginning of the easement herein conveyed;

thence, South 06°-00'-46" East, 2193.16 feet, along the west right-of-way line of Township Highway 38 to a point;

thence, South 83°-59'-14" West, 10.00 feet, to a point;

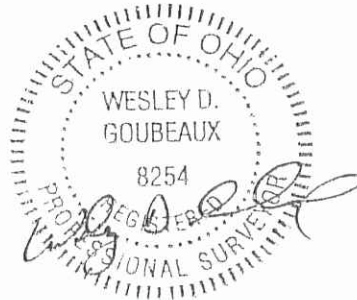
thence, North 06°-00'-46" West, 2193.13 feet, parallel to the west right-of-way line of Township Highway 38 to a point on the south right-of-way line of County Road 254;

thence, North 83°-48'-51" East, 10.00 feet, along the south right-of-way of County Road 254 to the principal place of beginning.

Containing 0.503 acres more or less with all being subject to any legal highway and easements of record.

The bearings are based on NAD 83 CORS 96 Adjustment, Ohio North Zone, ODOT VRS CORS Network.

The above description was prepared by Wesley D. Goubeaux, Ohio Professional Surveyor Number 8254, based on a survey performed under his direction and dated August 8, 2013. For a pictorial example, see attached Exhibit "B".



INDEXED ON MAP  
1395 2D



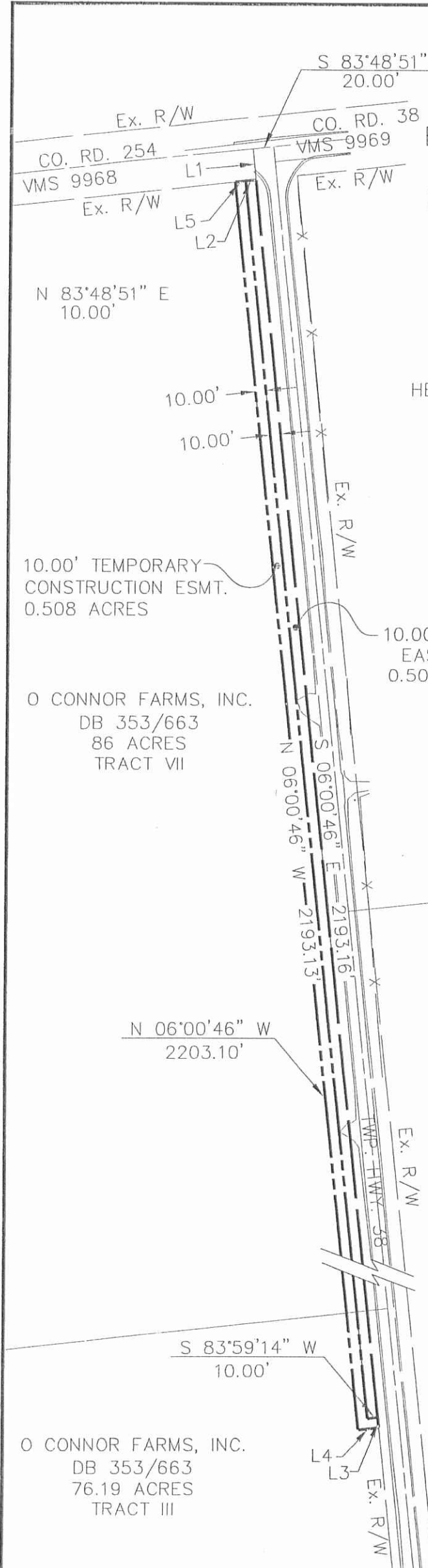


**APPROVED**

9-11-13

# EXHIBIT B

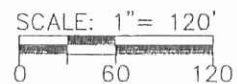
BEING A 10.00-FOOT WIDE UTILITY EASEMENT SITUATED IN VIRGINIA MILITARY SURVEY 9968, RICHLAND TOWNSHIP, LOGAN COUNTY, OHIO



LINE CHART		
LINE	LENGTH	BEARING
L1	30.00'	S 06°-00'-46" E
L2	10.00'	N 83°-48'-51" E
L3	10.00'	S 06°-00'-46" E
L4	20.00'	S 83°-59'-14" W
L5	10.00'	N 83°-48'-51" E



THE BEARINGS ARE BASED ON NAD 83 CORS 96 ADJUSTMENT, GEOID 2009 OHIO NORTH ZONE, ODOT VRS CORS NETWORK



**CHOICE ONE ENGINEERING**

440 E. HOEWISHER ROAD SIDNEY, OHIO 45365 (937) 497-0200  
 203 W. LOVELAND AVENUE LOVELAND, OHIO 45140 (513) 239-8554  
[www.choiceoneengineering.com](http://www.choiceoneengineering.com)

DATE: 08-08-2013  
 DRAWN BY: AJB  
 JOB NUMBER: LOGRIC1301  
 SHEET NUMBER

1 OF 1

INDEXED ON MAP  
 1395 ZP