

Aetna Life Ins. Co.
 Logan and Hardin County
 Richland and Township's

A. County Line Stone Berea Sandstone

No. 30 Hardin-Logan County Line Book

(P. 24) Page 29

B. Post Apparent Correr of Military Surveys

C. Large Concrete Post.

D. County Line Stone Berea Sandstone

No. 29 Hardin-Logan county line

Book (P. 24) Page 29

E. Large Post

F. Post

G. Stake

H. Post

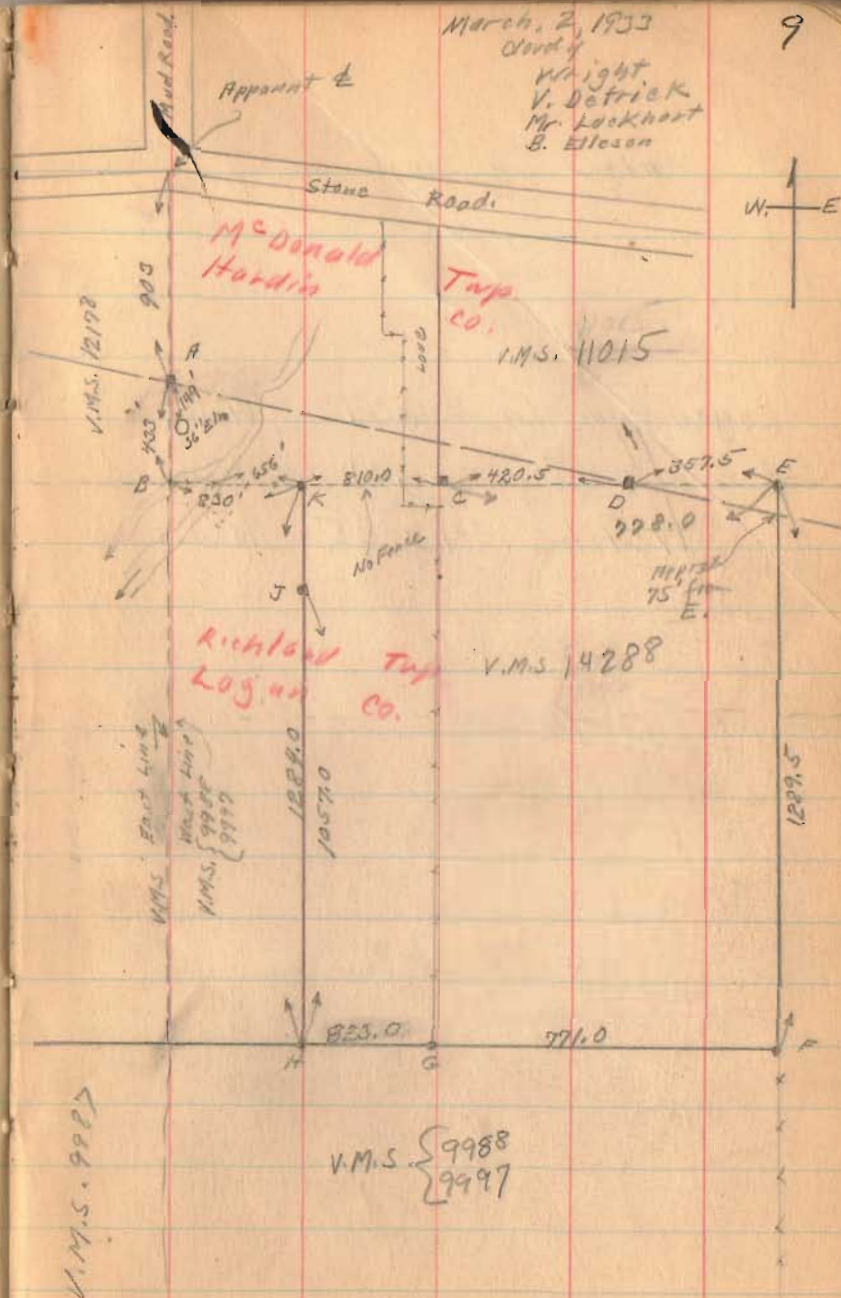
J. Concrete Post on line

K. Post.

1440

INDEXED ON MAP

vol 141-431



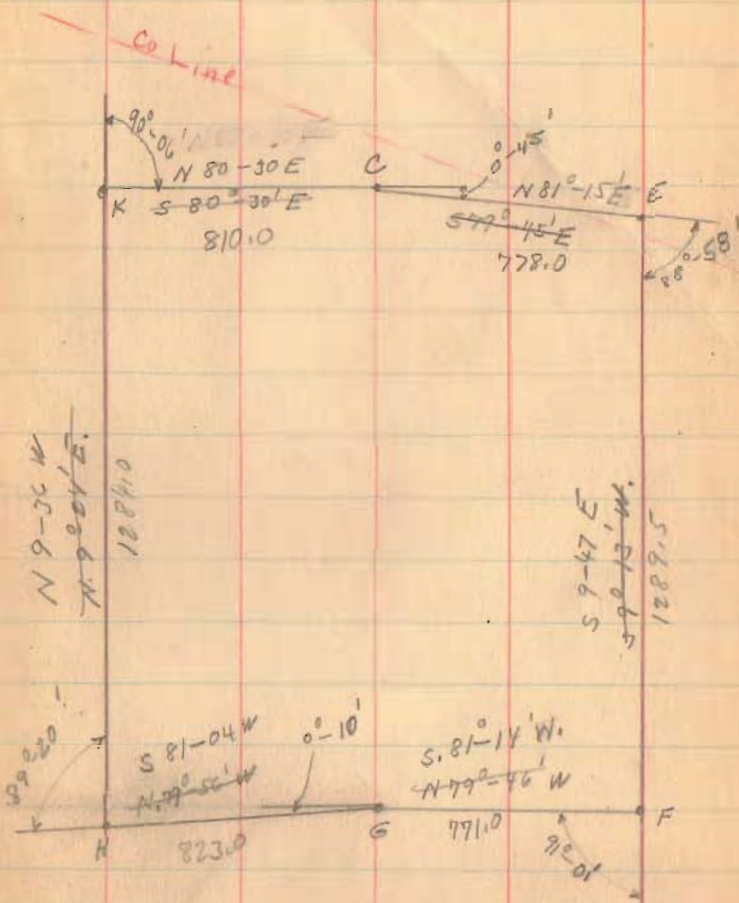
Actna Life Ins Co. Survey (continued)

Logan County = 46.74 Acres
 Hardin County = 1.31 Acres
 Total = 48.05 Acres.

Bought By Ellisons

3-2-33

10



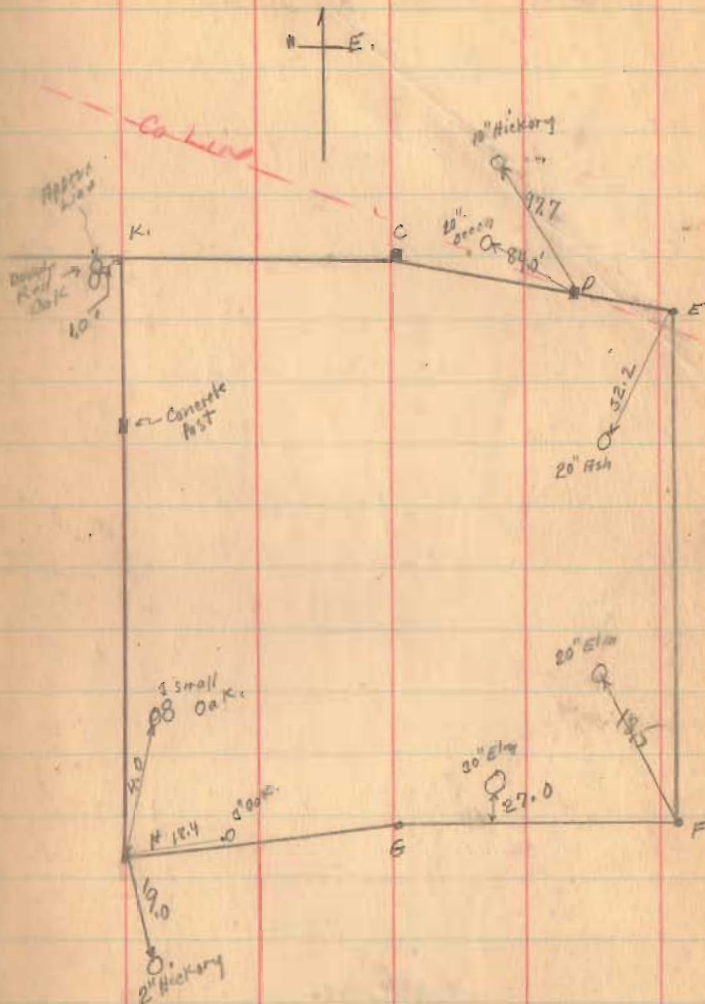
1440

INDEXED ON MAP

Aetna Life Ins Co. Survey

7-2-33

11



1933

Aetna Life Insurance Company Survey.

The following described land situated in McDonald Township, Hardin County and Richland Township, Logan County and being in Virginia Military Survey 14288 .

14288 Beginning at a Berea sand stone in the North line of V.M.S. ~~14288~~ and in the South line of V.M.S. 11015 on the line between Logan and Hardin Counties, said stone being in the South line of Wm. Robb's line, thence N. 81 degrees 15' E. with South line of said Robb's land 357.5 feet to a post ~~N.W.~~ corner to E.T. Schearer's land; thence S. 9 degrees 47' E. with said Schearer's West line 1289.5 feet to a post at N.E. corner to J.H. Good's land and being in the ~~South~~ ^{South} line of V.M.S. 14288, the last described line crossing the county line at about 75.0 feet, thence S. 81 degrees 14' W. with said Good's North line and the ~~South~~ ^{South} line of said Survey 14288, 771.0 feet to a post and stake, thence continuing with said Good's North line and said survey line S. 81 degrees 04' W. 823.0 feet to a post and stake at Good's N.W. corner and in Ellison's East line; thence N. 9 degrees 36' W. with Ellison's East line 1284.0 feet to a post near a large red oak tree said post being 830.0 feet East of the N.W. corner of V.M.S. 14288 the S.W. corner of V.M.S. 11015, thence N. 80 degrees 30' W. 810.0 feet to a large square concrete post at Wm. Robb's S.W. corner; thence N. 81 degrees 15' E. with said Robb's South line 420.5 feet to place of beginning, said tract containing a total of 47.05 acres more or less 46.74 acres being in Logan County and 0.31 acres being in Hardin County, this being the same tract as surveyed March 2, 1933 as shown and recorded in Logan County Surveyor's Book No. 570 Pages 9 to 11.

Aetna Life Insurance Company's one-half share of the cost amounts to \$5.00 with purchaser paying the balance.

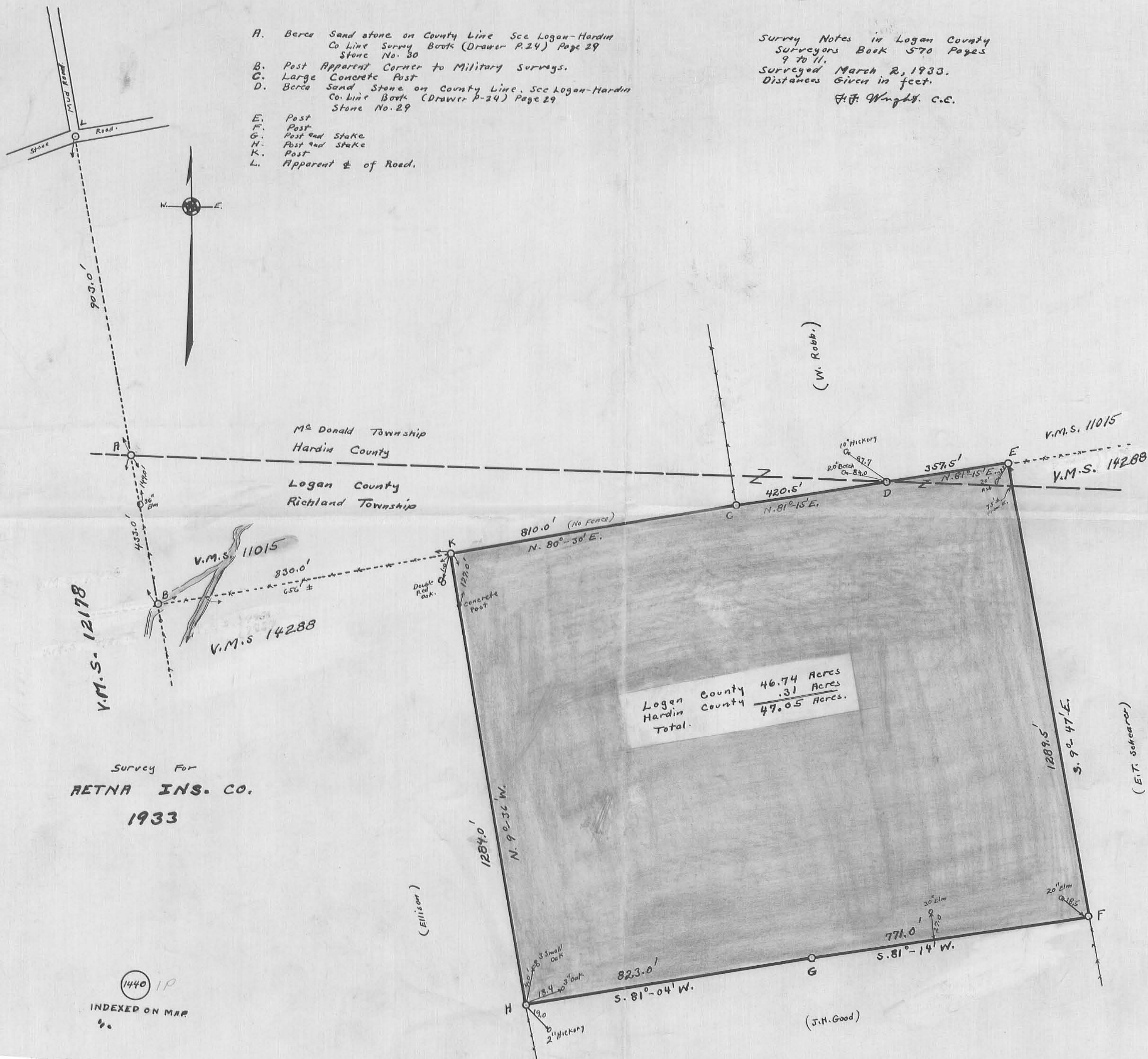
Aetna Insurance Company Survey.

The following described land situated in McDonald Township, Hardin County and Richland Township, Logan County and being in Virginia Military Survey {9988 and 9987.
9987

Beginning at a Berea sand stone in the North line of V.M.S. 9987-~~9988~~ and in the South line of V.M.S. 14288 on the line between Logan and Hardin Counties, said stone being in the South line of Wm. Robb's land, thence N. 81° 15' E. with South line of said Robb's land 357.5 feet to a post N.E. corner to E.T. Schearer's land; thence S. 9° 47' E. with said Schearer's West line 1289.5 feet to a post at N.E. corner to J.H. Good's land, the last described line crossing the county line at about 75.0 feet, thence S. 81° 14' W. with said Good's North line 771.0 feet to a post and stake, thence continuing with said Good's North line S. 81° 04' W. 823.0 feet to a post and stake at Good's N.W. corner and in Ellison's East line; thence N. 9° 36' W. with Ellison's East line 1284.0 feet to a post near a large red oak tree, thence N. 80° 30' E. 810.0 feet to a large square concrete post at Wm. Robb's S.W. corner; thence N. 81° 15' E. with said Robb's South line 420.5 feet to place of beginning, said tract containing a total of 47.05 acres more or less 46.74 acres being in Logan County and 0.31 acres being in Hardin County, this being the same tract as surveyed March 2, 1933 as shown and recorded in Logan County Surveyor's Book No. 570 Pages 9 to 11.

- A. Berce Sand stone on County Line See Logan-Hardin Co Line Survey Book (Drawer P.24) Page 29 Stone No. 30
- B. Post Apparent Corner to Military Surveys.
- C. Large Concrete Post
- D. Berce Sand Stone on County Line. See Logan-Hardin Co. line Book (Drawer p-24) Page 29 Stone No. 29
- E. Post
- F. Post
- G. Post and Stake
- H. Post and Stake
- K. Post
- L. Apparent \pm of Road.

Survey Notes in Logan County
 Surveyors Book 570 Pages
 9 to 11.
 Surveyed March 2, 1933.
 Distances Given in feet.
 F.F. Wright. C.E.



Logan County	46.74 Acres
Hardin County	.31 Acres
Total.	47.05 Acres.

Survey For
RETNA INS. CO.
 1933

1440 IP
 INDEXED ON MRR

LESLIE H. GEESLIN

REGISTERED SURVEYOR 5248

P. O. BOX 274

RUSHSVLVANIA, OHIO 43347

TELEPHONE: (513) 468-2793

SNYDER SURVEY

August 26, 1996

The following described real estate situated in the State of Ohio, Counties of Logan and Hardin, Townships of Richland and McDonald, being part of Virginia Military Surveys 14288, 9988 and 11015 and more particularly described as follows:

Beginning at a 5/8 inch iron bar set in the centerline of McDonald Township Road 210 at the intersection of said centerline with the east line of Virginia Military Survey 11015, said iron bar also being the northwest corner of Campbellay Farms, Inc.'s 99.67 acre tract as described in Hardin County D. B. Vol. 73 page 340.

Thence with the west line of said 99.67 acre tract and the east line of said V. M. S. 11015 S. 5° 26' 00" E. 1332.79 feet to a 5/8 inch iron bar set at the southeast corner of said V. M. S. 11015 and the northeast corner of V. M. S. 14288, passing a 5/8 inch iron bar set at 20.00 feet.

Thence again with the west line of said 99.67 acre tract, the west line of said Campbellay Farms, Inc.'s 26.48 acre tract as described in Logan County O. R. Vol. 47 Page 978, the west line of said Farms' 34.075 acre tract as described in Logan County O. R. Vol. 47 Page 978 and the east line of said V. M. S. 14288 S. 6° 37' 49" E. 1332.87 feet to a stone found at the southeast corner of V. M. S. 14288, in the north line of V. M. S. 9988 said stone also at a northerly corner of Wayne Detling, etux's 265.876 acre tract as described in Logan County O. R. Vol. 251 page 725.

Thence with said Detling's west line the following three courses:

1. S. 7° 16' 20" E. 329.84 feet to a stone found.
2. S. 80° 49' 52" W. 128.89 feet to a stone found.
3. S. 7° 04' 38" E. 560.32 feet to a 6 inch wood post found

Thence with a northerly line of said 265.876 acre tract and the north line of Gerald Evans' 26 acre tract as described in Logan Co. O. R. Vol. 39 Page 115 and the north line of Wayne Detling, etux's 39.113 acre tract as described in Logan Co. O. R. Vol. 264 Page 601, Tract "A1-1" S. 82° 43' 03" W. 1780.87 feet to a 5/8 inch iron bar set in the remains of a wood post.

Thence with the east line of said Wayne Detling, etux's 58 acre tract (Tract "A-3") and his 47.05 acre tract (Tract "A-4") as both are described in Logan County O. R. Vol. 264 Page 601 N. 7° 28' 41" W. 2253.00 feet to a 5/8 inch iron bar set in the remains of a wood post at the southwest corner of C. F. Yohe and Barb Yohe, Trustees' 23.457 acre tract as described in Hardin Co. D. B. Vol. 152 Page 236, passing into Hardin County at 2180.26 feet

RI A:\15\SNYDER.SAM, RI A:\18\SNYDER.SAM HA A:\MCDONALD\SNIDER.SAM



Thence with said Yohe's south line and the south line of Dorothy Cunningham's 18.51 acre tract as described in Hardin Co. D. B. Vol.. 94 page 126 N. 83° 28' 00" E. 1283.03 feet to a stone found.

Thence with said Cunningham's east line N. 5° 30' 00" W. 1331.91 feet to a 5/8 inch iron bar set over stone with brick found in the centerline of said *McDONALD* Twp. Road 210 passing a 5/8 inch iron bar set at 1311.91 feet.

Thence with the centerline of said *McDONALD* Twp. Road 210 N. 83° 23' 32" E. 653.32 feet to the place of beginning.

Containing 117.033 acres more or less of which 31.890 acres are in Hardin County (19.955 acre in V. M. S. 11015 and 11.935 acre in V. M. S. 14288) and 85.143 acres are in Logan County (48.891 acres in V. M. S. 14288 and 36.252 acres in V. M. S. 9988).

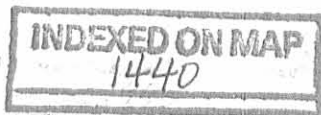
The above described 117.033 acre tract being all [0.525 acre] of Lester L. Snyder, etux's 0.75 acre tract (Pt. Tract 1), all [19.430 acres] of his 19 acre tract, (Tract 2), all [47.976 acre of which 11.935 acre is in Hardin County and 36.041 acre is in Logan County] of his 47.31 acre tract (Pt. Tract 2), all [26.377 acre] of his 23.68 acre tract (Pt Tract 2), all [0.976 acre] of his 0.985 acre tract (Pt. Tract 2) and all [21.749 acres] of his 23.68 acre tract (Pt Tract 2) as all are described in Logan County D. B. Vol. 396 Page 529 and Hardin County D. B. Vol. 89 Page 344.

Bearings are based on an assumed bearing (N. 5° 30' 00" W.) for the east line of Dorothy Cunningham's 18.51 acre tract as described in D. B. vol.. 94 page 126 in this field survey by Leslie H. Geeslin, Reg. Surveyor 5248 on August 26, 1996.

REVISED 1/19/09



RI A:\15\SNYDER.SAM, RI A:\18\SNYDER.SAM HA A:\MCDONALD\SNIDER.SAM

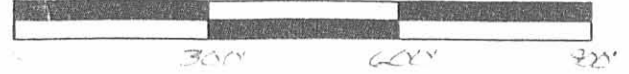


2D-2

Leslie H. Geeslin

SURVEY OF 117.033 ACRES IN VIRGINIA MILITARY SURVEYS 14288, 9988 AND 11015, LOGAN COUNTY, RICHLAND TOWNSHIP, AND HARDIN COUNTY, McDONALD TOWNSHIP FOR LESTER SNYDER ON AUGUST 26, 1906

SCALE 1"=300'



- LEGEND:
- = 5/8 INCH IRON BAR SET OVER STONE WITH BRICK FOUND
 - = 5/8 INCH IRON BAR SET
 - △ = STONE FOUND
 - = 6 INCH WOOD POST FOUND
 - = 5/8 INCH IRON BAR SET IN REMAINS OF WOOD POST

NOTE:
5/8 INCH IRON BAR SET NEAR ALL STONES FOUND FOR MAGNETIC ATTRACTION

C. F. YOHE AND BARB YOHE, TRUSTEES 23.457 AC. D.B. VOL. 152 PAGE 236

DOROTHY CLINNINGHAM 18.51 AC. PAGE 126 D.B. VOL. 94

V.M.S. 11015

V.M.S. 14288

N. 83° 28' 00" E 1283.03

0.75 AC PT. TRACT 1

(11.935 AC) HARDIN COUNTY D.B. VOL. 89 PG. 344
(36.091 AC) LOGAN COUNTY McDONALD TWP. RICHLAND TWP.

(47.976 AC) LESTER L. SNYDER, ETUX 47.31 AC. PT. TRACT 1 D.B. VOL. 396 PAGE 529

117.033 AC.

34.075 AC.

CAMPBELL FARMS, INC. 26.48 AC. O.R. VOL. 47 PG. 978

V.M.S. 14159

12.85 AC V.M.S. 14288
13.527 AC V.M.S. 9988

23.68 AC. PT. TRACT 1

0.985 AC PT. TRACT 1

(21.749 AC) 23.68 AC. PT. TRACT 1

5.7916' 20" E
329.84'
0.916 AC

S. 80° 49' 52" W.

2P INDEXED ON MAP 1440

39.113 AC. TRACT A1-1

GERALD EVANS 26 AC. O.R. VOL. 39 PG. 115

WAYNE DETLING, ETUX 265.876 AC. O.R. VOL. 251 PAGE 725



Leslie H. Geeslin
LESLIE H. GEESLIN
REGISTERED PROFESSIONAL SURVEYOR