



Road. 104

C.E.  
25+50  
W.O.

25+00

21+52.95

left only.

20+71.5

right only

19+99.05

left only

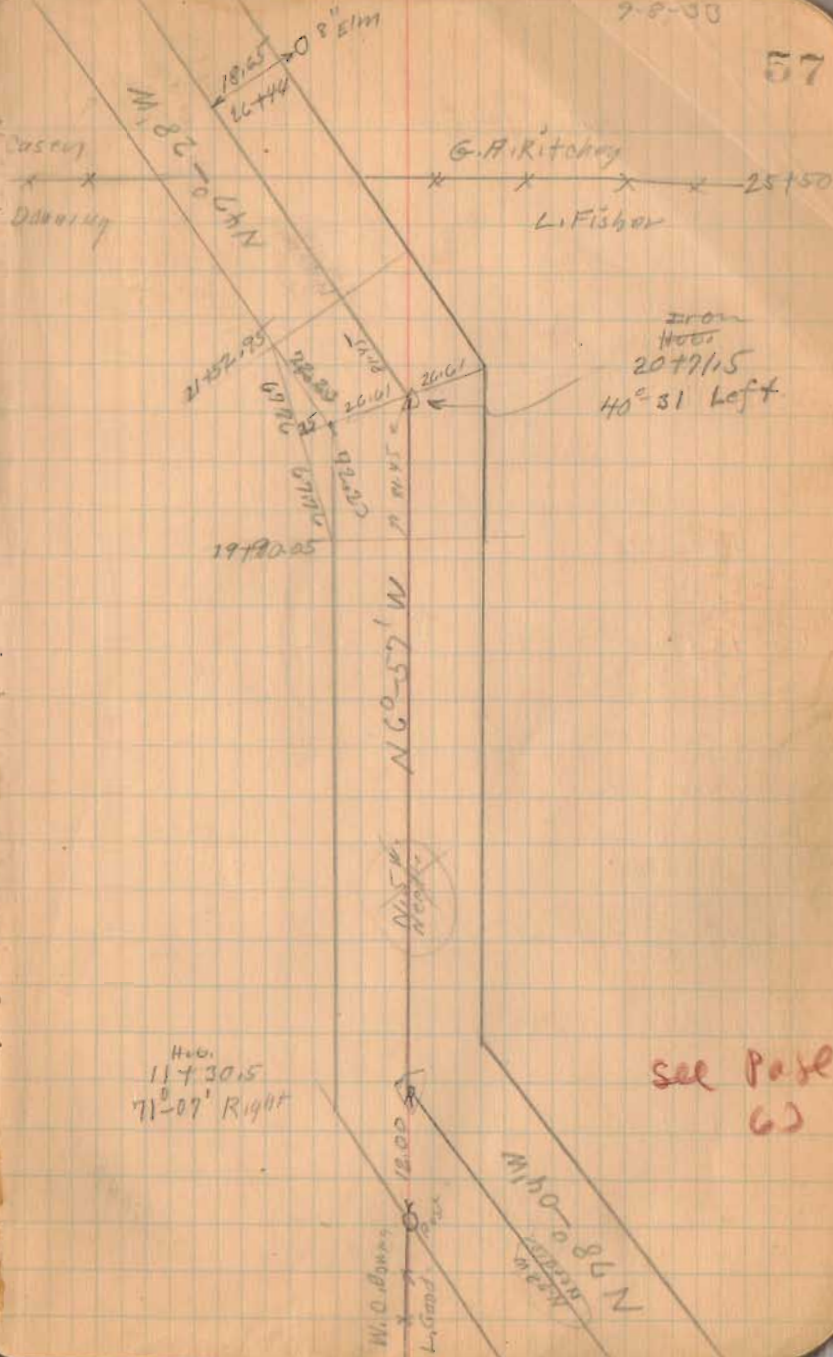
16+00

1495

INDEXED ON MAP

7-8-33

57





Road 104

43+00

42+00

36+00

30+12.26 Right only

29+32 Left only

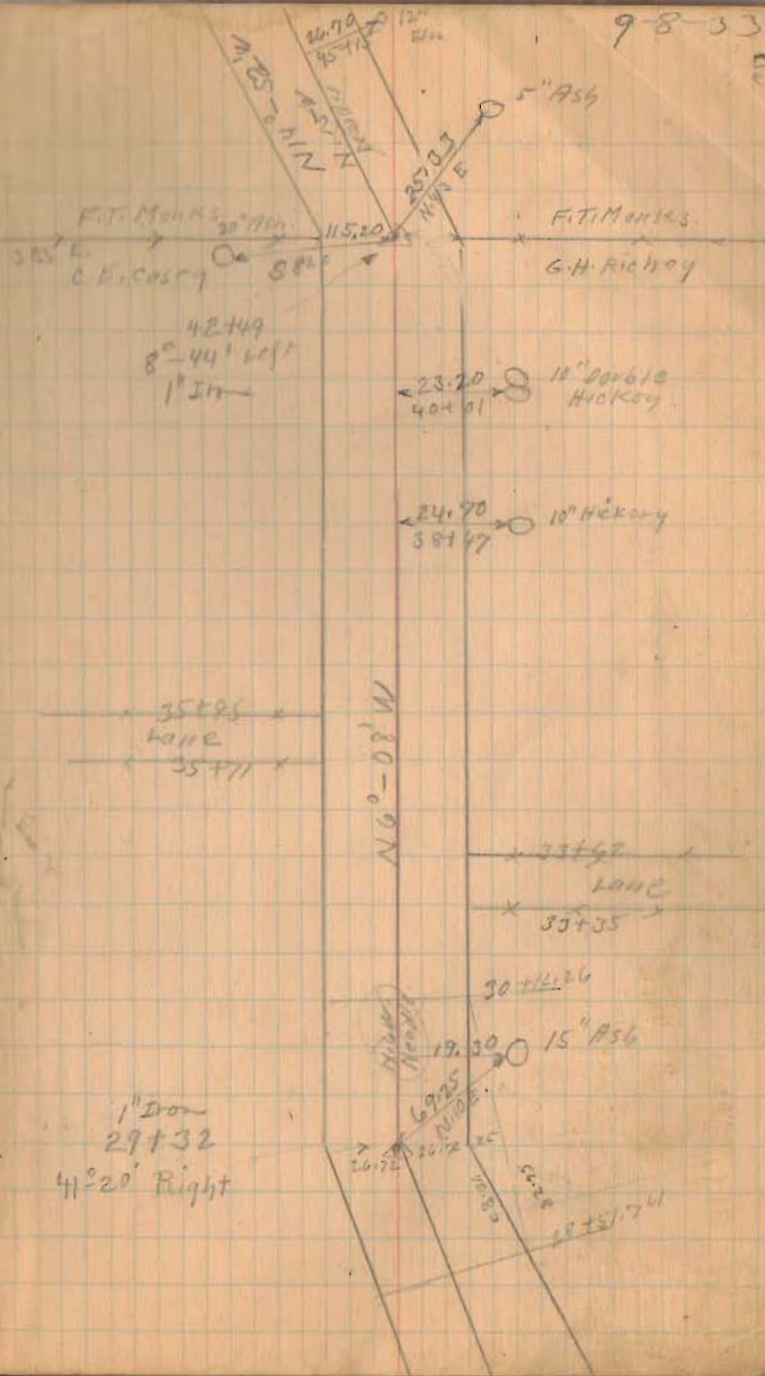
28+51.74 Right only

1495

INDEXED ON MAP

9-8-33

58



Road 104

56+20

54+34 Right only

54+00 Left only

51+50 Left only

51+09 Right only

50+50 Left only

1495

INDEXED ON MAP

Stre Fond  
See Brk C  
Page 331  
Stone D

9-8-33

59



N 35° W.  
N 34° 21' W

1" Iron  
54+34  
17° 21' H ft.

54+00

N 17° 0' W  
N 17° 4' W



51+33

172° 40'  
N 17° 4' W

Pearl Robinson  
1029-98

51+04

F.T. Monks

51+04  
Stone found  
2°-08' left  
See Borers  
Page 331  
Str. G

122.15  
510.2

50+60 30

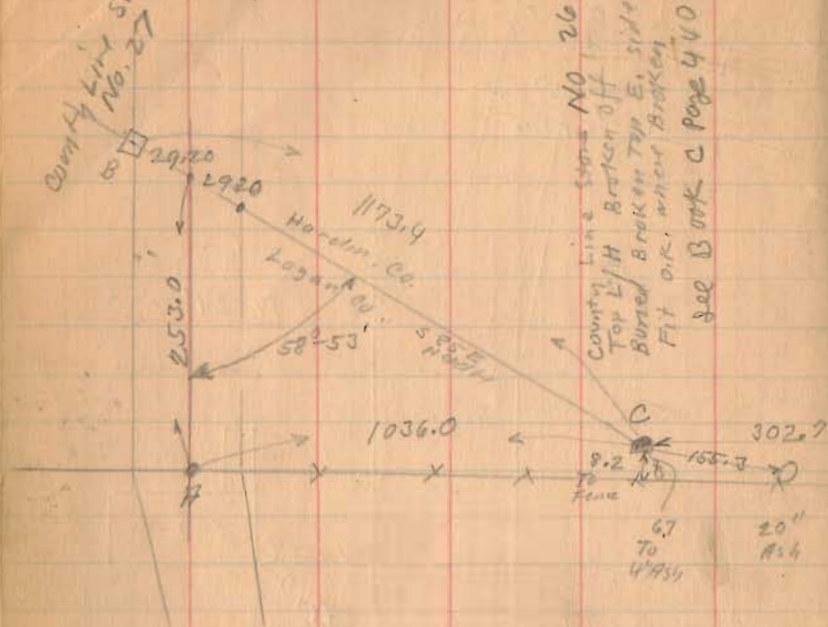
50.00  
47+71 10' Victoria



County Line Sta  
No. 27

Road. 104

County Line Stone NO 26  
Top L.H. Broken Off  
Burned Broken Top E. side of Stone  
Fit o.k. when broken  
see Book C page 440



59757

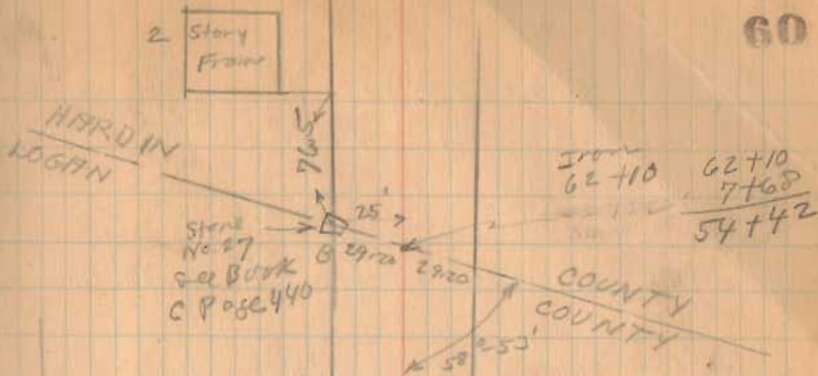
Stone Found  
see Book C  
Page 331  
Stone E.

1495

INDEXED ON MAP

9-8-33

60



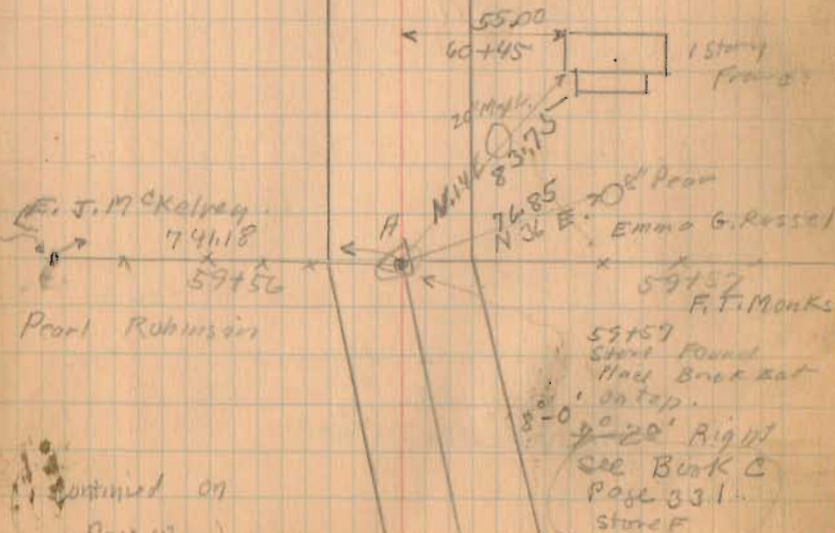
~~Length 6212 Feet~~

~~Length 11765 Miles~~

Length 5442 feet

Length 1.0307 Miles

N. 26°-53' W  
Mistake made



F. J. McKelvey  
74118  
59756  
Pearl Robinson

Continued on  
Page 63

59757  
Stone Found  
Nail Broken out  
on top.  
20" Right  
see Book C  
Page 331  
Stone F

Road 104  
continued from Page 60

(See Page 56)

11+00

8+25

Monuments 25' from  $\pm$

Jul. 2-1934

Cloudy

Wright

Coast

Eng. of

Public

Works

63

