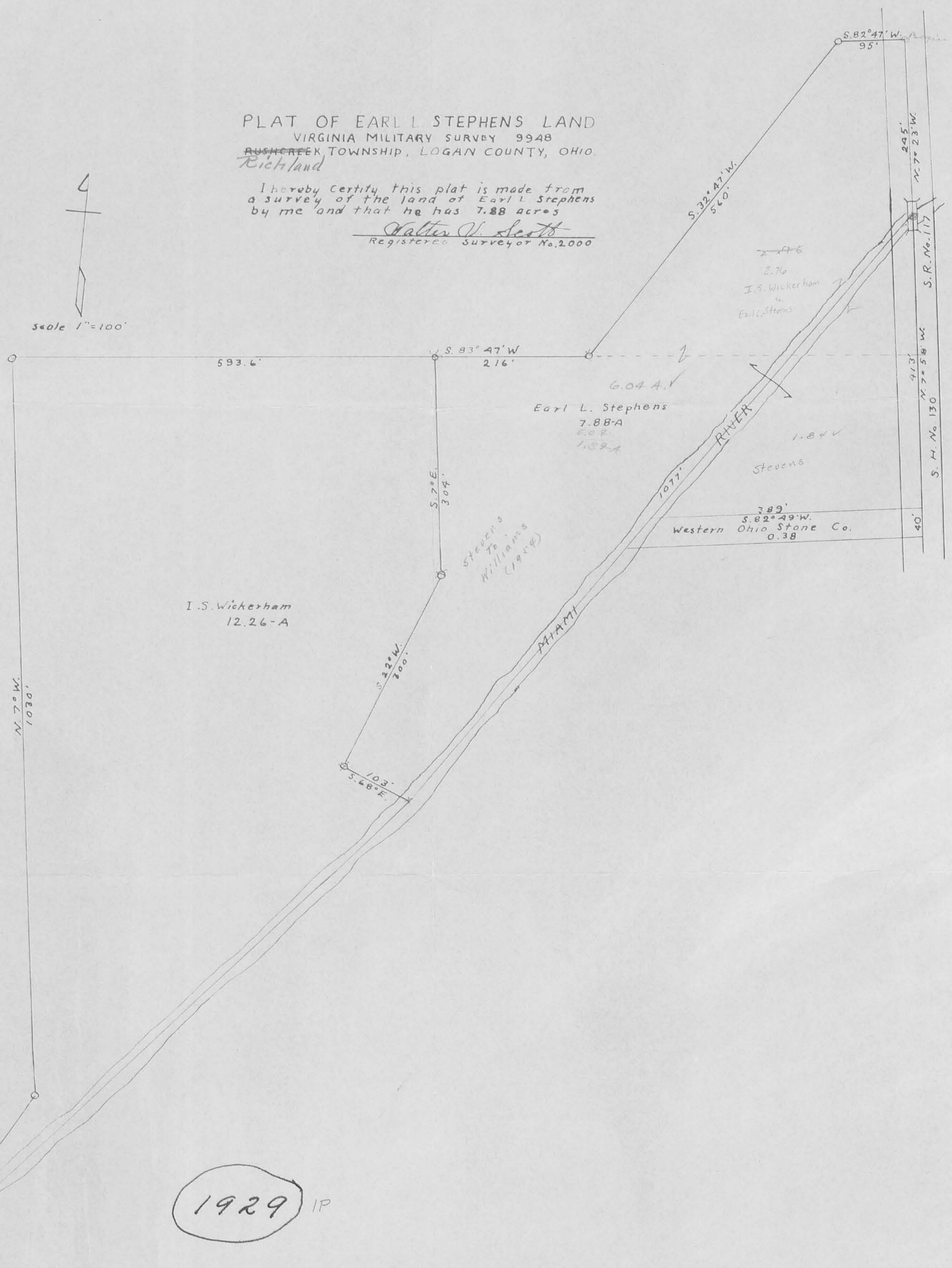
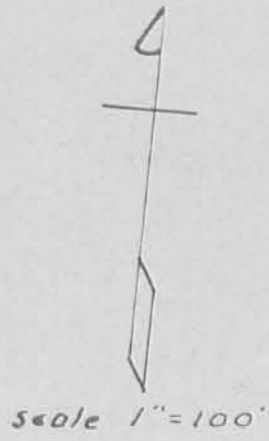


PLAT OF EARL L STEPHENS LAND
 VIRGINIA MILITARY SURVEY 9948
 RUSHCREEK TOWNSHIP, LOGAN COUNTY, OHIO.
Richland

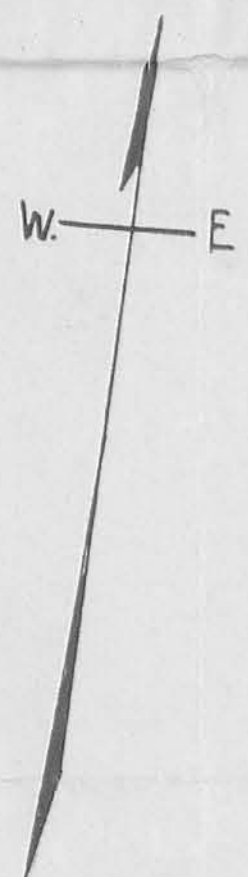
I hereby certify this plat is made from
 a survey of the land of Earl L. Stephens
 by me and that he has 7.88 acres

Walter V. Scott
 Registered Surveyor No. 2000



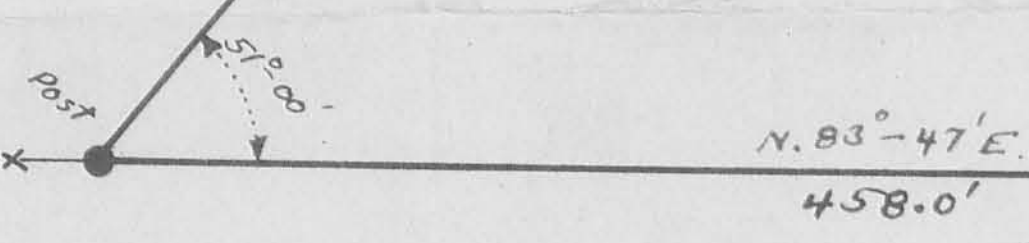
1929 IP

STEPHENS-WICKERHAM SURVEY
 RICHLAND TWP. V.M.S. 9948
 LOGAN COUNTY OHIO
 1" = 40'
 FE. WRIGHT NOV. 1944



FW-12-169
 (87)

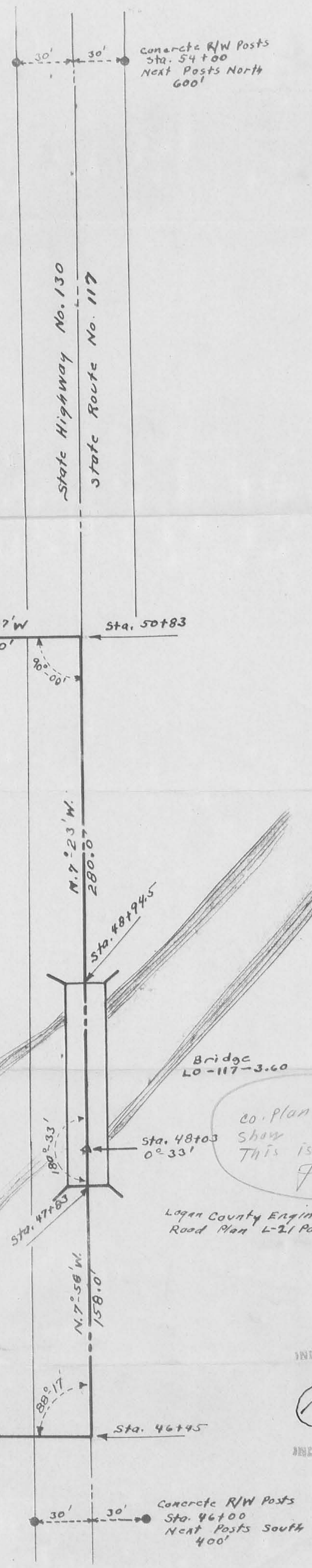
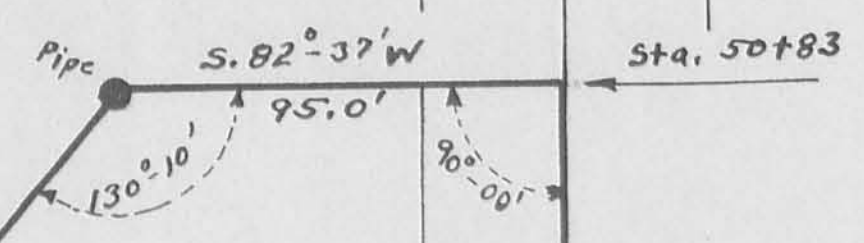
I.S. Wickerham
 E.A. Stephens



S. 32°-47' W
 560.0'

2.76 Acres

MIAMI RIVER



N. 7°-23' W.
 280.0'

Sta. 48+94.5

Sta. 48+03
 0°-33'

N. 7°-58' W.
 158.0'

Sta. 46+45

Co. Plan and Notes
 show 0°-33' lot
 This is to Right
 F. Wright

Logan County Engineer's
 Road Plan L-21 Page 1

INDEXED ON MAP

1929 2P

INDEXED ON MAP

