

Richland Township Survey

**Village of Belle Center
Richland Township
Logan County, Ohio
V.M.S. 9989
July 2000**

The following described real estate is found in the Village of Belle Center, Richland Township, Logan County, Ohio and is part of V.M.S. 9989. Said real estate being part of School Street and that part of Railroad Street (now known as Elizabeth Street) which is encompassed by a deed from James H. Clark to the Board of Education of the Belle Center Union School District (D.B. Vol. 76; pg. 501 & D.B. Vol. 107; pg. 540). Said real estate being more particularly described as follows:

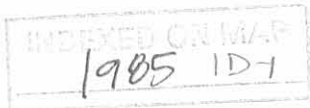
Beginning at a 5/8 inch diameter capped iron bar found at the S.E. corner of the Board of Trustees of Richland Township's 7.193 acre tract (O.R. Vol. 320; pg. 561). Said capped iron bar found also being the intersection of the North line of School Street with the West line of Center Street.

Thence with the West line of Center Street, S. 36°-58'-28" W., 60.00 feet to a 5/8 inch diameter capped re-bar set on the N.E. corner of Johnny Chris Fulmer etux's 0.19 acre tract (D.B. Vol. 357; pg. 160).

Thence with the South line of School Street and the North line of Fulmer's 0.19 acre tract, Danny M. McDonald etal's 50'x75' rectangular tract (O.R. Vol. 452; pg. 725), Vivian Millisor's 0.06 acre tract (D.B. Vol. 399; pg. 485), and William C. Fulton, Trustee, etal's 50'x170' rectangular tract (O.R. Vol. 186; pg. 469), N. 53°-17'-19" W., 493.59 feet to a 5/8 inch diameter capped re-bar set. Said re-bar set being the intersection of the South line of School Street with the East line of Elizabeth Street and is the N.W. corner of Fulton's tract. The above described line passes through a 5/8 inch diameter capped iron bar found at the N.E. corner of Fulton's tract at 320.68 feet.

Thence with the West line of Fulton's tract and the East line of Elizabeth Street, S. 37°-00'-00" W., 50.00 feet to a 5/8 inch diameter capped re-bar set.

Thence parallel with School Street, N. 53°-17'-19" W., 60.00 feet to a 5/8 inch diameter capped re-bar set on the West line of Elizabeth Street.



Thence with the West line of Elizabeth Street and the East line of Donald R. Bechtel etux's 0.23 acre tract (O.R. Vol. 311; pg. 1), N. 37°-00'-00" E., 50.00 feet to a 5/8 inch diameter capped re-bar set on the N.E. corner of Bechtel's aforesaid tract.

Thence with the West line of Elizabeth Street extended and the extended East line of Bechtel's aforesaid tract, N. 37°-00'-00" E., 60.00 feet to a 5/8 inch diameter capped re-bar set on the North line of School Street.

Thence with the North line of School Street and the South line of the Board of Trustees of Richland Township's 7.193 acre tract, S. 53°-17'-19" E., 553.56 feet to the point of beginning.

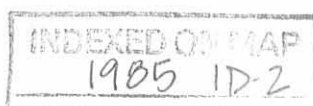
The above described tract encompasses 0.831 acre more or less of which 0.762 acre is found within School Street and Elizabeth Street contains 0.069 acre.

Caps placed on re-bars set are stamped "Logan County Engineer".

Basis of bearing being the centerline of the former Cincinnati, Sandusky, and Cleveland Railroad (N. 37°-00'-00" E.) as shown on the plat of William Ramsey's Addition to the Town of Belle Center (plat cabinet A; slide 105).

This is a new description prepared from an actual field survey performed by the Logan County Engineer's Office on August 7, 1998.


Curtis D. Dill
Deputy Surveyor
Logan County Engineer's Office
Registered Surveyor No. 7310



Richland Township Survey

**Village of Belle Center
Richland Township
Logan County, Ohio
V.M.S. 9989
July 2000**

The following described real estate is found in the Village of Belle Center, Richland Township, Logan County, Ohio and is part of V.M.S. 9989. Said real estate being a part of School Street established by a deed from James H. Clark to the Board of Education of the Belle Center Union School District (D.B. Vol. 76; pg. 501 & D.B. Vol. 107; pg. 540). Said real estate being more particularly described as follows:

Beginning for reference at a 5/8 inch diameter capped iron found at the S.E. corner of the Board of Trustees of Richland Township's 7.193 acre tract (O.R. Vol. 320; pg. 561). Said capped iron bar found also being the intersection of the North line of School Street with the West line of Center Street.

Thence with the North line of School Street and the South line of said 7.193 acre tract, N. 53°-17'-19" W., 553.56 feet to a 5/8 inch diameter capped re-bar set. Said capped iron set being the True Point of Beginning for this description.

Thence with an extension of the West line of Elizabeth Street, S. 37°-00'-00" W., 60.00 feet to a 5/8 inch diameter capped re-bar set on the N.E. corner of Donald R. Bechtel et ux's 0.23 acre tract (O.R. Vol. 311; pg. 1). Said capped re-bar set also being the intersection of the West line of Elizabeth Street with the South line of School Street.

Thence with the North line of Bechtel's tract and the South line of School Street, N. 53°-17'-19" W., 150.31 feet to a 5/8 inch diameter capped re-bar set on the intersection of the South line of School Street with the East line of the Dayton Power and Light Company's 116.50 acre tract (O.R. Vol. 329; pg. 713, parcel no. 5).

Thence with the East line of the said 116.50 acre tract, N. 37°-00'-00" E., 60.00 feet to a 5/8 inch diameter capped re-bar set at the intersection of the East line of the said 116.50 acre tract and the North line of School Street.

Thence with the North line of School Street and the South line of Richland Township's 7.193 acre tract, S. 53°-17'-19" E., 150.31 feet to the point of beginning.

The above described tract encompasses 0.207 acre more or less.

INDEXED ON 1st AP
1985 1D-3

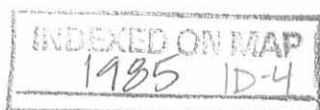
Caps placed on re-bars set are stamped "Logan County Engineer".

Basis of bearing being the centerline of the former Cincinnati, Sandusky, and Cleveland Railroad (N. 37°-00'-00" E.) as shown on the plat of William Ramsey's Addition to the Town of Belle Center (plat cabinet A; slide 105).

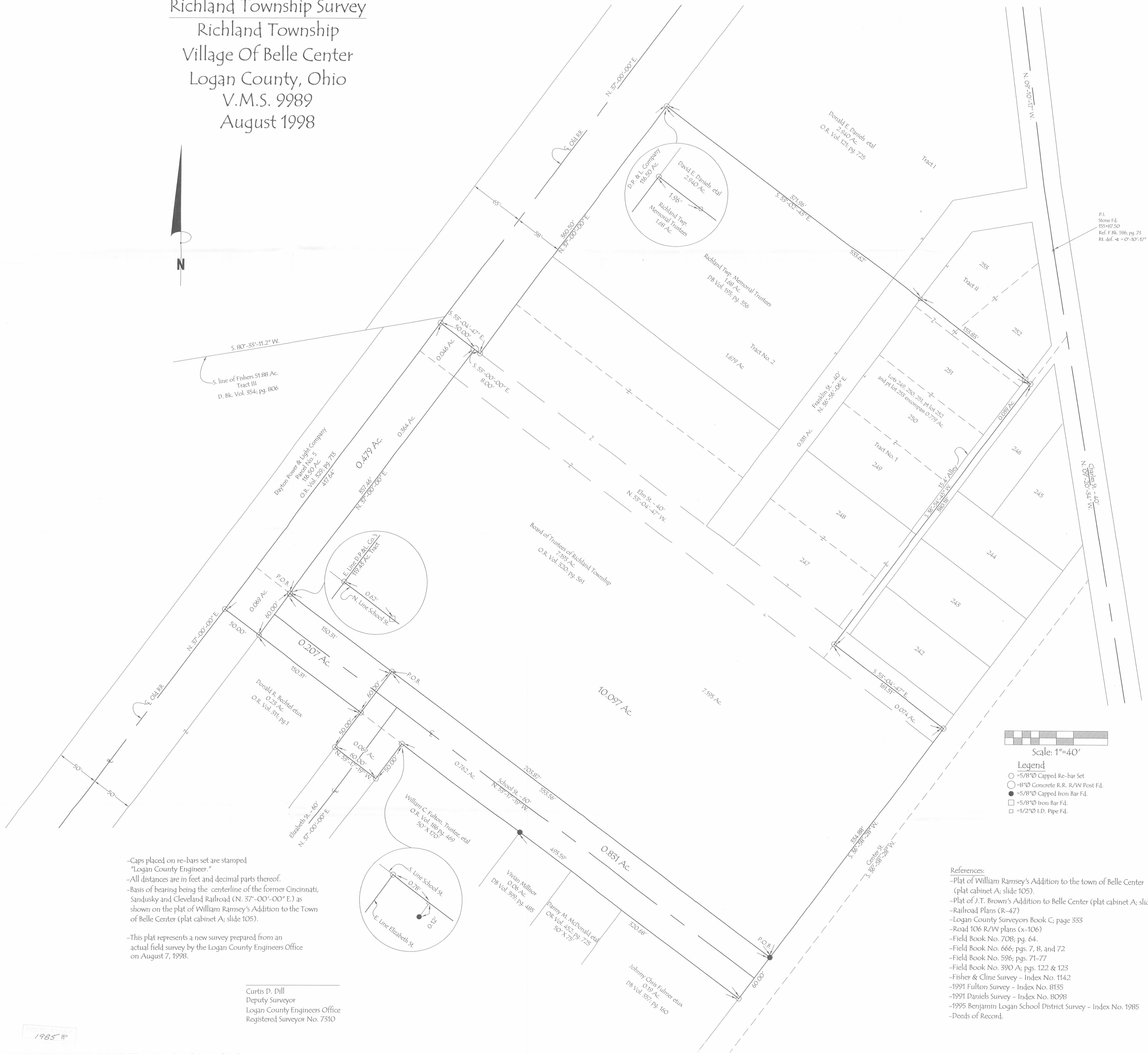
This is a new description prepared from an actual field survey performed by the Logan County Engineer's Office on August 7, 1998.



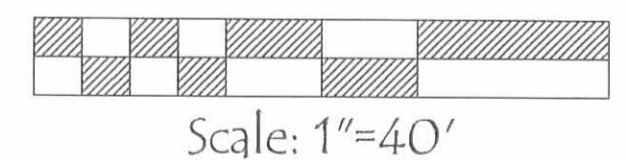
Curtis D. Dill
Deputy Surveyor
Logan County Engineer's Office
Registered Surveyor No. 7310



Richland Township Survey
 Richland Township
 Village Of Belle Center
 Logan County, Ohio
 V.M.S. 9989
 August 1998



P.I.
 Stone Fd.
 155x87.50
 Ref. F.Bk. 596, pg. 73
 Rt. def. = 0'-10'-17"



- Legend**
- = 5/8"Ø Capped Re-bar Set
 - = 8"Ø Concrete R.R. R/W Post Fd.
 - = 5/8"Ø Capped Iron Bar Fd.
 - = 5/8"Ø Iron Bar Fd.
 - = 1/2"Ø I.D. Pipe Fd.

- References:**
- Plat of William Ramsey's Addition to the town of Belle Center (plat cabinet A; slide 105).
 - Plat of J.T. Brown's Addition to Belle Center (plat cabinet A; slide 65).
 - Railroad Plans (R-47)
 - Logan County Surveyors Book C; page 333
 - Road 106 R/W plans (x-106)
 - Field Book No. 708; pg. 64.
 - Field Book No. 666; pgs. 7, 8, and 72
 - Field Book No. 596; pgs. 71-77
 - Field Book No. 390 A; pgs. 122 & 123
 - Fisher & Cline Survey - Index No. 1142
 - 1991 Fulton Survey - Index No. 8135
 - 1991 Daniels Survey - Index No. 8098
 - 1995 Benjamin Logan School District Survey - Index No. 1985
 - Deeds of Record.

-Caps placed on re-bars set are stamped "Logan County Engineer."
 -All distances are in feet and decimal parts thereof.
 -Basis of bearing being the centerline of the former Cincinnati, Sandusky and Cleveland Railroad (N. 37°-00'-00" E.) as shown on the plat of William Ramsey's Addition to the Town of Belle Center (plat cabinet A; slide 105).

-This plat represents a new survey prepared from an actual field survey by the Logan County Engineers Office on August 7, 1998.

Curtis D. Dill
 Deputy Surveyor
 Logan County Engineers Office
 Registered Surveyor No. 7310

1985-1P

Richland Township Survey

**Village of Belle Center
Richland Township
Logan County, Ohio
V.M.S. 9989
August 1998**

The following described real estate is found in the Village of Belle Center, Richland Township, Logan County, Ohio and is part of V.M.S. 9989. Said real estate being part of School Street and that part of Railroad Street (now known as Elizabeth Street) which is encompassed by a deed from James H. Clark to the Board of Education of the Belle Center Union School District (D.B. Vol. 76; pg. 501). Said real estate being more particularly described as follows:

Beginning at a 5/8 inch diameter capped iron bar found at the S.E. corner of the Board of Trustees of Richland Township's 7.193 acre tract (O.R. Vol. 320; pg. 561). Said capped iron bar found also being the intersection of the North line of School Street with the West line of Center Street.

Thence with the West line of Center Street, S. 36°-58'-28" W., 60.00 feet to a 5/8 inch diameter capped re-bar set on the N.E. corner of Johnny Chris Fulmer etux's 0.19 acre tract (D.B. Vol. 357; pg. 160).

Thence with the South line of School Street and the North line of Fulmer's 0.19 acre tract, Hazel M. Minter's 50' x 75' rectangular tract (D.B. Vol. 305; pg. 820), Vivian Millisor's 0.06 acre tract (D.B. Vol. 399; pg. 485), and William C. Fulton, Trustee, etal's 50' x 170' rectangular tract (O.R. Vol. 186; pg. 469), N. 53°-17'-19" W., 493.59 feet to a 5/8 inch diameter capped re-bar set. Said re-bar set being the intersection of the South line of School Street with the East line of Elizabeth Street and is the N.W. corner of Fulton's tract. The above described line passes through a 5/8 inch diameter capped iron bar found at the N.E. corner of Fulton's tract at 320.68 feet.

Thence with the West line of Fulton's tract and the East line of Elizabeth Street, S. 37°-00'-00" W., 50.00 feet to a 5/8 inch diameter capped re-bar set.

Thence parallel with School Street, N. 53°-17'-19" W., 60.00 feet to a 5/8 inch diameter capped re-bar set on the West line of Elizabeth Street.

Thence with the West line of Elizabeth Street and the East line of Donald R. Bechtel etux's 0.23 acre tract (O.R. Vol. 311; pg. 1), N. 37°-00'-00" E., 50.00 feet to a

5/8 inch diameter capped re-bar set. Said re-bar set being the N.E. corner of Bechtel's tract and the intersection of the West line of Elizabeth Street with the South line of School Street.

Thence with the North line of Bechtel's tract and the South line of School Street, N. 53°-17'-19" W., 150.31 feet to a 5/8 inch diameter capped re-bar set on the intersection of the South line of School Street with the East line of the Dayton Power and Light Company's 116.500 acre tract (O.R. Vol. 329; pg. 713, Parcel No. 5).

Thence with the East line of the said 116.500 acre tract N. 37°-00'-00" E., 60.00 feet to a 5/8 inch diameter capped re-bar set at the intersection of the East line of the said 116.500 acre tract and the North line of School Street.

Thence with the North line of School Street and the South line of said 7.193 acre tract, S. 53°-17'-19" E., 703.87 feet to the point of beginning. The above described line passes through a 5/8 inch diameter iron bar found at 0.62 feet.

The above described tract encompasses 1.038 acres more or less of which 0.969 acre is found within School Street and Elizabeth Street contains 0.069 acre.

Caps placed on re-bars set are stamped "Logan County Engineer".

Basis of bearing being the centerline of the former Cincinnati, Sandusky, and Cleveland Railroad (N. 37°-00'-00" E.) as shown on the plat of William Ramsey's Addition to the Town of Belle Center (plat cabinet A; slide 105).

This is a new description prepared from an actual field survey performed by the Logan County Engineers Office on August 7, 1998.



Curtis D. Dill
Curtis D. Dill
Deputy Surveyor
Logan County Engineers Office
Registered Surveyor No. 7310

1985 2D-2

Richland Township Survey

Village of Belle Center
Richland Township
Logan County, Ohio
V.M.S. 9989
August 1998

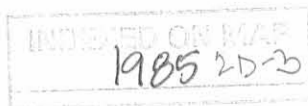
The following described real estate is found in the Village of Belle Center, Richland Township, Logan County, Ohio and is part of V.M.S. 9989. Said real estate being all of that 7.193 acre tract in the name of the Board of Trustees of Richland Township (O.R. Vol. 320; pg. 561), all of that 1.68 acre tract presently in the name of the Richland Township Memorial Trustees (D.B. Vol. 193; pg. 556, Tract 2), all of lots numbered 249, 250, 251 and ten (10) feet off of the Southwest side of lots numbered 252 and 253 of J. T. Brown's Addition to Belle Center (plat cabinet A; slide 63) also in the name of the Richland Township Memorial Trustees' (D.B. Vol. 193, pg. 556, Tract I) part of abandoned Elm Street, part of abandoned Franklin Street, and part of a 15.4 foot wide abandoned alley as shown on the plat of J. T. Brown's Addition to Belle Center. The above mentioned real estate is more particularly described as follows:

Beginning at a 5/8 inch diameter capped iron bar found at the S.E. corner of the Board of Trustees of Richland Township's 7.193 acre tract. Said capped iron bar found also being the intersection of the North line of School Street with the West line of Center Street.

Thence with the South line of Richland Township's 7.193 acre tract and the North line of School Street, N. 53°-17'-19" W., 703.87 feet to a 5/8 inch diameter capped re-bar set on the East line of the former Cincinnati, Sandusky, and Cleveland Railroad which is now the Dayton Power and Light Company's 116.500 acre tract (O.R. Vol. 329; pg. 713, Parcel No. 5). The above described line passes through a 5/8 inch diameter iron bar found at 703.25 feet.

Thence with the East line of the said 116.500 acre tract, the following three courses:

- 1) N. 37°-00'-00" E., 357.46 feet to an 8 inch diameter concrete railroad right-of-way post found.
- 2) S. 53°-00'-00" E., 8.00 feet to a 5/8 inch diameter capped re-bar set.



3) N. 37°-00'-00" E., 360.50 feet to a 5/8 inch diameter capped re-bar set at the S.W. corner of Donald E. Daniels etal's 2.940 acre tract (O.R. Vol. 121; pg. 725, Tract I).

Thence with the South line of said 2.940 acre tract and the south line of Donald E. Daniels Etal's parts of Lots 253 and 252 as described in O.R. Vol. 12; Pg. 725 (Tract II), S. 53°-02'-43" E., 533.62 feet to a 5/8 inch diameter capped re-bar set on the centerline of a abandoned 15.4 foot wide alley. The above described line passes through a ½ inch I.D. pipe found at 1.96 feet, a ½ inch I.D. pipe found on the S.W. corner of Daniel's part of Lot 253 at 371.96 feet, and a 5/8 inch diameter iron bar found on the S.E. corner of Daniel's part of Lot 252 at 525.79 feet.

Thence with the centerline of an abandoned 15.4 foot wide alley, S. 36°-54'-45" W., 380.18 feet to a 5/8 inch diameter capped re-bar set on the centerline of abandoned Elm Street.

Thence with the centerline of abandoned Elm Street, S. 53°-04'-47" E., 161.51 feet to a 5/8 inch diameter capped re-bar set on the West line of Center Street.

Thence with the West line of Center Street, S. 36°-58'-28" W., 334.88 feet to the point of beginning.

The above described real estate encompasses 10.097 acres more or less. The above described 10.097 acre tract is further broken down as follows:

Part of abandoned Franklin Street contains 0.331 Ac.

Part of abandoned Elm Street contains 0.074 Ac.

Part of abandoned 15.4 foot wide alley contains 0.039 Ac.

Lots 249, 250, 251, pt. Lot 252 and pt. Lot 253 contains 0.779 Ac.

Richland Township Memorial Trustees 1.68 Ac. Tract contains 1.679 Ac.

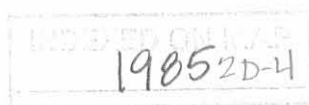
by this survey.

Board of Trustees of Richland Township's 7.193 Ac. tract contains 7.195

Ac. by this survey.

Caps placed on re-bars set are stamped "Logan County Engineer".

Basis of bearing being the centerline of the former Cincinnati, Sandusky, and Cleveland Railroad (N. 37°-00'-00" E.) as shown on the plat of William Ramsey's Addition to the Town of Belle Center (plat cabinet A; slide 105).



This is a new description prepared from an actual field survey performed by the Logan County Engineers Office on August 7, 1998.



Curtis D. Dill

Curtis D. Dill
Deputy Surveyor
Logan County Engineers Office
Registered Surveyor No. 7310

1985 2D-5

Richland Township Survey

Village of Belle Center
Richland Township
Logan County, Ohio
V.M.S. 9989
August 1998

The following described real estate is in the Village of Belle Center, Richland Township, Logan County, Ohio and is part of V.M.S. 9989. Said real estate being that part of the former Cincinnati, Sandusky, and Cleveland Railroad (presently part of a 116.500 acre tract in the name of the Dayton Power and Light Company, O.R. Vol. 329; pg. 713, Parcel 5) which is encompassed by a deed from James H. Clark to the Board of Education of the Belle Center Union School District (D.B. Vol. 76; pg. 501). Said real estate being more particularly described as follows:

Beginning for reference at a 5/8 inch diameter capped iron bar found at the S.E. corner of the Board of Trustees of Richland Township's 7.193 acre tract (O.R. Vol. 320; pg. 561). Said capped iron bar found also being the intersection of the North line of School Street with the West line of Center Street.

Thence with the South line of Richland Township's 7.193 acre tract and the North line of School Street, N. 53°-17'-19" W., 703.87 feet to a 5/8 inch diameter capped re-bar set on the East line of said 116.500 acre tract. Said re-bar set being the true point of beginning for this description. The above described line passes through a 5/8 inch diameter iron bar found at 703.25 feet.

Thence with the East line of the said 116.500 acre tract S. 37°-00'-00" W., 60.00 feet to a 5/8 inch diameter capped re-bar set. Said re-bar set being the intersection of the East line of the said 116.500 acre tract with the South line of School Street and is also on the North line of Donald R. Bechtel et ux's 0.23 acre tract (O.R. Vol. 311; pg. 1).

Thence with the South line of School Street and with the North line of Bechtel's tract, N. 53°-17'-19" W., 50.00 feet to a 5/8 inch diameter capped re-bar set on the N.W. corner of Bechtel's tract. Said capped re-bar set also being the center of the said Dayton Power and Light Company's 116.500 acre tract (formerly C.S.&C. Railroad).

Thence with the center of the said 116.500 acre tract N. 37°-00'-00" E., 417.64 feet to a 5/8 inch diameter capped re-bar set. Said capped re-bar set being the

1985 2D-U

intersection of the center of the said 116.500 acre tract (formerly C.S&C. Railroad) with the North line of abandoned Elm Street.

Thence with the North line of abandoned Elm Street, S. 53°-04'-47" E., 50.00 feet to an 8 inch diameter concrete railroad right-of-way post found on the West line of Richland Township's 7.193 acre tract.

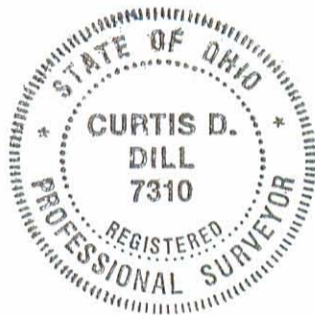
Thence with the East line of the said 116.500 acre tract S. 37°-00'-00" W., 357.46 feet to the point of beginning.

The above described tract encompasses 0.479 acre more or less of which 0.046 acre is contained within abandoned Elm Street and 0.069 acre is contained within abandoned School Street.

Caps placed on re-bars set are stamped "Logan County Engineer".

Basis of bearing being the centerline of former Cincinnati, Sandusky, and Cleveland Railroad (N. 37°-00'-00" E.) as shown on the plat of William Ramsey's addition to the Town of Belle Center (plat cabinet A; slide 105).

This is a new description prepared from an actual field survey performed by the Logan County Engineers Office on August 7, 1998.



Curtis D. Dill
Curtis D. Dill
Deputy Surveyor
Logan County Engineers Office
Registered Surveyor No. 7310

1985 2D-7

DESCRIPTION FOR
BELLE CENTER SCHOOL DISTRICT

TRACT #1

The following described real estate situated in Belle Center, Richland Township, Logan County, Ohio and being Lot #248 of the J. T. Brown Addition to the Village of Belle Center as shown on the recorded plat of said village.

TRACT #2

The following described real estate situated in V.M.S. #9989 Belle Center, Richland Township, Logan County, Ohio and more particularly described as follows:

Commence at an iron pin at the south corner of Lot #242 of the J. T. Brown Addition to the said village, at the intersection of the north property line of Center Street and the east property line of Elm Street, thence with the east property line of Elm Street N. 50°-W. 363.4 feet to an iron pin at the intersection of the east property line of Elm Street and the north property line of Franklin Avenue, thence N. 40° E. with said north line of Franklin Avenue 70.0 feet to an iron pin for a place of beginning; thence N. 50° W. 333.0 feet to an iron pin in the C.C.C. and St. L. R.R. property line, thence N. 40° E. 70.0 feet with the said R.R. property line to an iron pin; thence S. 50° E. 333.0 feet to an iron pin in the north property line of Franklin Avenue, thence with the north side of Franklin Avenue S. 40° W. 70.0 feet to the place of beginning, containing 0.54 acres.

The above described tract is taken from the James Elmert 1.50 acre tract.

INDEXED ON MAP
1985 3D-1

Description for
Board of Education, Belle Center School District

Tract #1

The following described real estate situated in Belle Center, Richland Township, Logan County, Ohio and being Lot #247 of the J. T. Brown Addition to the Village of Belle Center as shown on the recorded plat of said village.

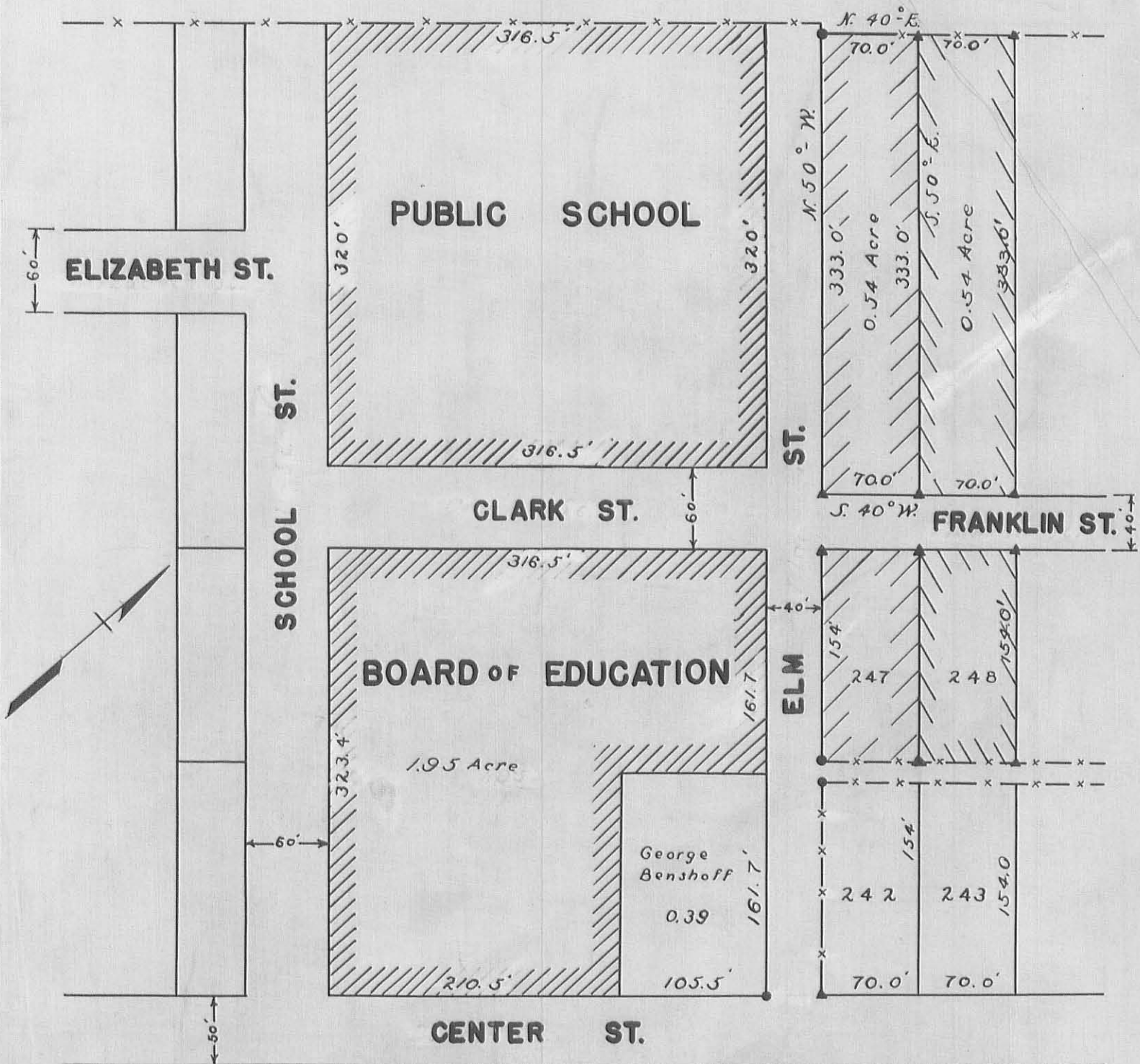
Tract #2

The following described real estate situated in V. M. S. #9989, Belle Center, Richland Township, Logan County, Ohio more particularly described as follows:-


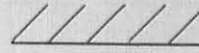




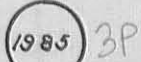
Commence at an iron pin at the south corner of Lot #242 of the J. T. Brown Addition to the said village, at the intersection of the north property line of Center Street and the east property line of Elm Street, thence with the east property line of Elm Street N. 50°W. 363.4 feet to an iron pin at the intersection of the east property line of Elm Street and the north property line of Franklin Avenue in the J.T. Brown Addition of Belle Center for a place of beginning; thence continuing with the east side of Elm Street N. 50° W. 333.0 feet to a post in C. C. C. and St. L. R. R. property line, thence N. 40° E. 70.0 feet with the said R. R. property line to an iron pin; thence S. 50° E. 333.0 feet to an iron pin in the north property line of Franklin Avenue, thence with the north side of Franklin Avenue S. 40° W. 70.0 feet to the place of beginning, containing 0.54 acres.

The above described tract is taken from the James Emmert 2.04 acre tract.

INDEXED ON MAP
1985 3D-2



Property of
 Board of Education
 Belle Center School District
 Belle Center, Richland TWP.
 Logan County, Ohio
 1948

-  Original Property
-  Purchased from James Emmert 1948
-  Purchased from James Emmert 1949
-  Existing Fence
-  Iron Pins
-  Posts
-  Indexed on Map

Scale 1 inch. = 100 feet

Surveyed By
 Carl E. Keyser
 February, 1948 May 1949

LESLIE H. GEESLIN

REGISTERED SURVEYOR 5248

P. O. BOX 274

RUSHSVLVANIA, OHIO 43347

TELEPHONE: (513) 468-2793

BENJAMIN LOGAN SCHOOL DISTRICT SURVEY

October 27, 1995

The following described real estate situated in the State of Ohio, County of Logan, Township of Richland, being part of the Village of Belle Center, in Virginia Military Survey 9989, and more particularly described as follows:

Beginning at a 3/4 inch iron pipe found at the southwest corner of the Richland Township Memorial Trustees' 1.68 acre tract as described in D. B. Vol. 193 Page 556 in the east line of Conrail (the old C. C. C. & St. L. Railroad).

Thence with the south line of said 1.68 acre tract S. 49° 43' 29" E. 333.24 feet to a 3/4 inch iron pipe found in the west line of Franklin Street.

Thence with the west line of said Franklin St. S. 40° 25' 24" W. 139.87 feet to a 5/8 inch iron bar found at the southwest corner of said Franklin St.

Thence with the south end of said Franklin St. S. 49° 39' 55" E. 40.00 feet to a 5/8 inch iron bar found at the southeast corner of said Franklin St. and the southwest corner of Lot 247 of J. T. Brown's Addition to the Village of Belle Center as shown in Cabinet "A" Slide 63 of the Logan County Recorder's Office.

Thence with the east line of said Franklin St. and the west line of said Lot 247 and Lot 248 of J. T. Brown's Addition to the Village of Belle Center N. 40° 17' 17" E. 139.91 feet to a 5/8 inch iron bar found.

Thence with the north line of said Lot 248 S. 49° 43' 34" E. 161.52 feet to a 5/8 inch iron bar set in the centerline of an abandoned 15 foot alley.

Thence with the centerline of said 15 foot alley S. 40° 18' 27" W. 180.10 feet to a 5/8 inch iron bar set in the south line of an abandoned portion of Elm Street.

Thence with the south line of vacated Elm St. S. 49° 38' 17" E. 161.70 feet to a 1 inch rectangular iron bar found in the west line of Center Street.

Thence with the west line of said Center St. S. 40° 15' 03" W. 314.28 feet to a 5/8 inch iron bar set at the intersection of the west line of said Center St. with the north line of School Street.

Thence with the north line of said School St. N. 50° 00' 00" W. 703.22 feet to a 5/8 inch iron bar set at the intersection of the north line of said School St. with the east right of way line of Conrail (the old C. C. C. & St. L. Railroad).

Thence with the east right of way of said Conrail N. 40° 10' 50" E. 356.97 feet to a Concrete post found.

Thence again with the east right of way of said Conrail S. 49° 55' 09" E. 7.88 feet to a 5/8 inch iron bar set.

Thence again with the east right of way of said Conrail N. 40° 10' 50" E. 140.99 feet to the place of beginning.

Containing 7.193 acres more or less.

The above described 7.193 acre tract being all of the Board of Education, Belle Center Local School District's 0.54 acre tract (0.532 acre), Lot 247 (0.247 acre) of J. T. Brown's Addition to the Village of Belle Center as described in D. B. Vol. 93 Page 199, half (0.024 acre) of an abandoned portion of a 15 foot alley adjacent to Lots 247 and 248 of J. T. Brown's Addition to the Village of Belle Center, their 0.54 acre tract (0.532 acre), Lot 248 (0.247 acre) of J. T. Brown's Addition to the Village of Belle Center as described in D. B. Vol. 193 Page 386, The Board of Education, Belle Center Union School District's 4.94 acre tract (2.231 acre) as described in D. B. Vol. 76 page 501, with the exception of School Street, The Belle Center Board of Education's 2.12 acre tract as described in D. B. Vol. 107 Page 540, (this description includes School Street, Clark Street and Elm Street which were previously transferred in D. B. Vol. 76 Page 501, however School Street is not part of this description), their tract (1.906 acres) as described in D. B. Vol. 120 Page 244 (previously described in D. B. Vol. 76 page 501) and all of their 0.39 acre tract (0.392 acre) as described in D. B. Vol. 386 Page 464 (previously described in D. B. Vol. 76 Page 501) and all of abandoned Elm Street (0.646 acre) and abandoned Clark Street (0.436 acre).

D. B. Vol. 76 Page 501 begins at a point in the centerline of the C. S. & C. Railroad, however this description does not include any railroad property. This surveyor found no record of any street or alley vacation for this parcel. Legal advice is recommended.

Bearings are based on an assumed bearing (N. 50° 00' 00" W.) for the north line of School Street in this field survey by Leslie H. Geeslin, Reg. Surveyor 5248 on October 27, 1995.

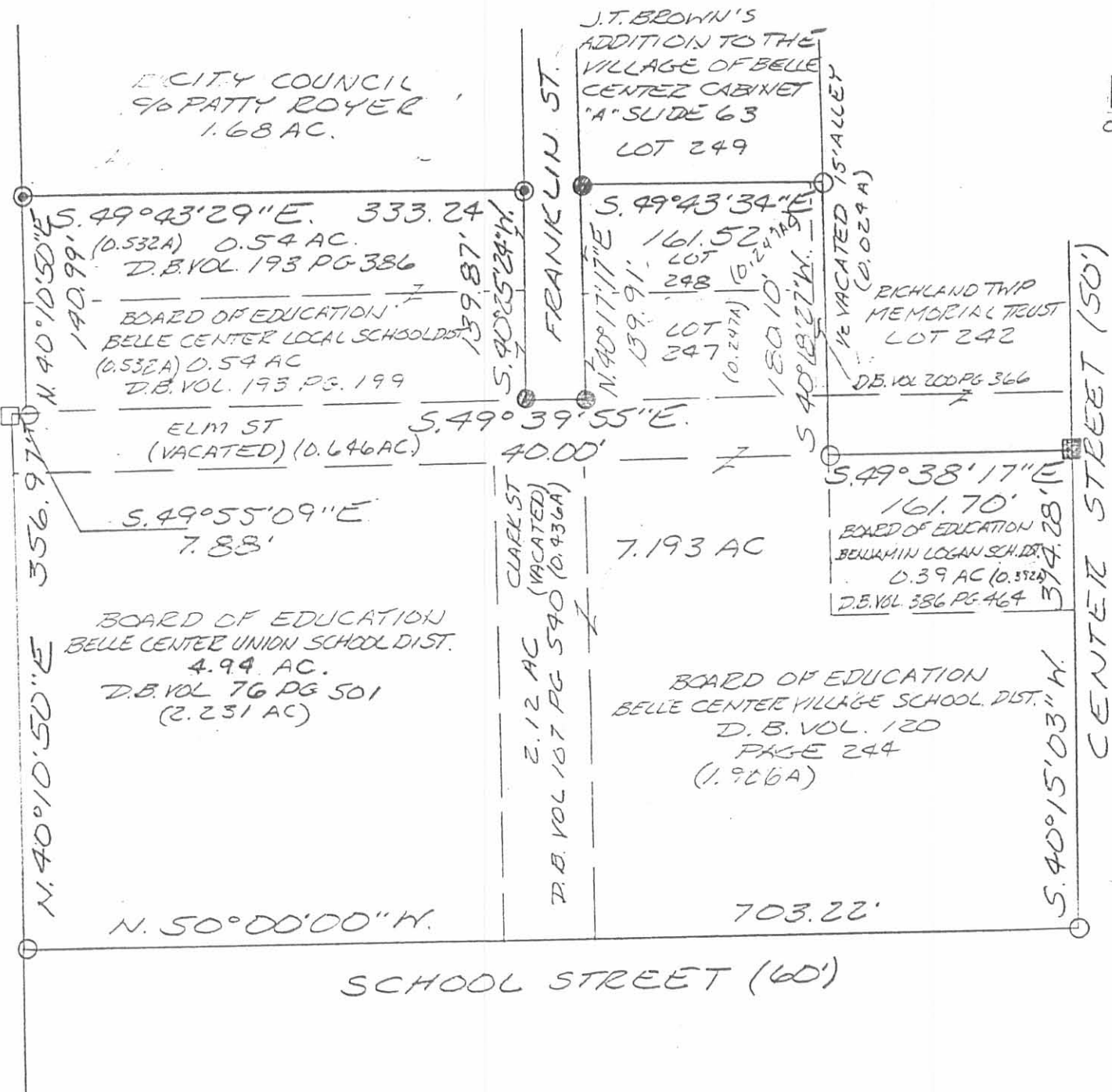
RI A:\30\BENLOGAN.SAM

INDEXED ON MAP
1985 HDZ



Leslie H. Geeslin

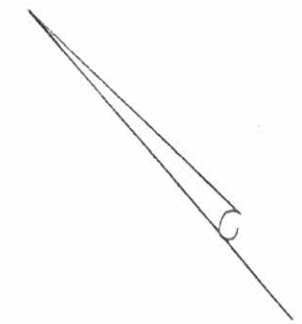
CON RAIL (C.C.C. ST. L. R.R.)



SCALE: 1"=100'



- LEGEND:**
- ▣ = 1" RECTANGULAR IRON BAR FOUND
 - = 3/8 INCH IRON BAR FOUND
 - = CONCRETE POST FOUND
 - ⊙ = 3/4 INCH IRON PIPE FOUND
 - = 5/8 INCH IRON BAR SET



SURVEY OF 7.193 ACRES IN VIRGINIA MILITARY SURVEY 9989, THE VILLAGE OF BELLE CENTER RICHLAND TOWNSHIP, LOGAN COUNTY, OHIO FOR THE BOARD OF EDUCATION OF BENJAMIN LOGAN SCHOOL DISTRICT ON OCTOBER 27, 1993



Leslie H. Geeslin
 LESLIE H. GEESLIN
 RUSHSVLVANIA, OH
 (513) 468-2793

INDEXED ON MAP
 1985 4P