

THE MARY BALES DESCRIPTION

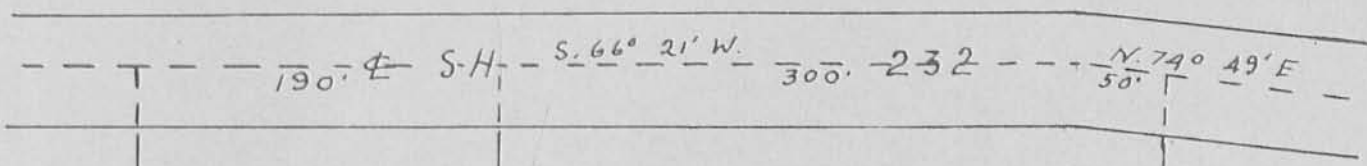
The following described real estate being situated in Richland Township, Logan County, Ohio, and being a part of V. M. S. 12277; and more particularly described as follows:

Beginning at Sta. 305+05 in the center of S. H. #232 as shown on the plans L-17 in the Logan County Engineer's Office; thence following the center of S. H. 232 S. 66 -21' W. 330.8 feet to the place of beginning for this description; thence S. 23 -49' E. 285.5 feet more or less to the high water mark of Indian Lake, passing through a iron at 30.0 feet; thence following the high water mark S. 56 -48' W. 115.0 feet to a point; thence N. 16 -10' W. 307.0 feet to a point in the center of S. H. 232, passing through a corner fence post at 287.0 feet; thence following S. H. 232 N. 66 -21' E. 72.8 feet to the place of beginning.

Containing 0.62 of a acre more or less.

1D

2046



Vic Donahay

TRACT No. 2

TRACT No. 1

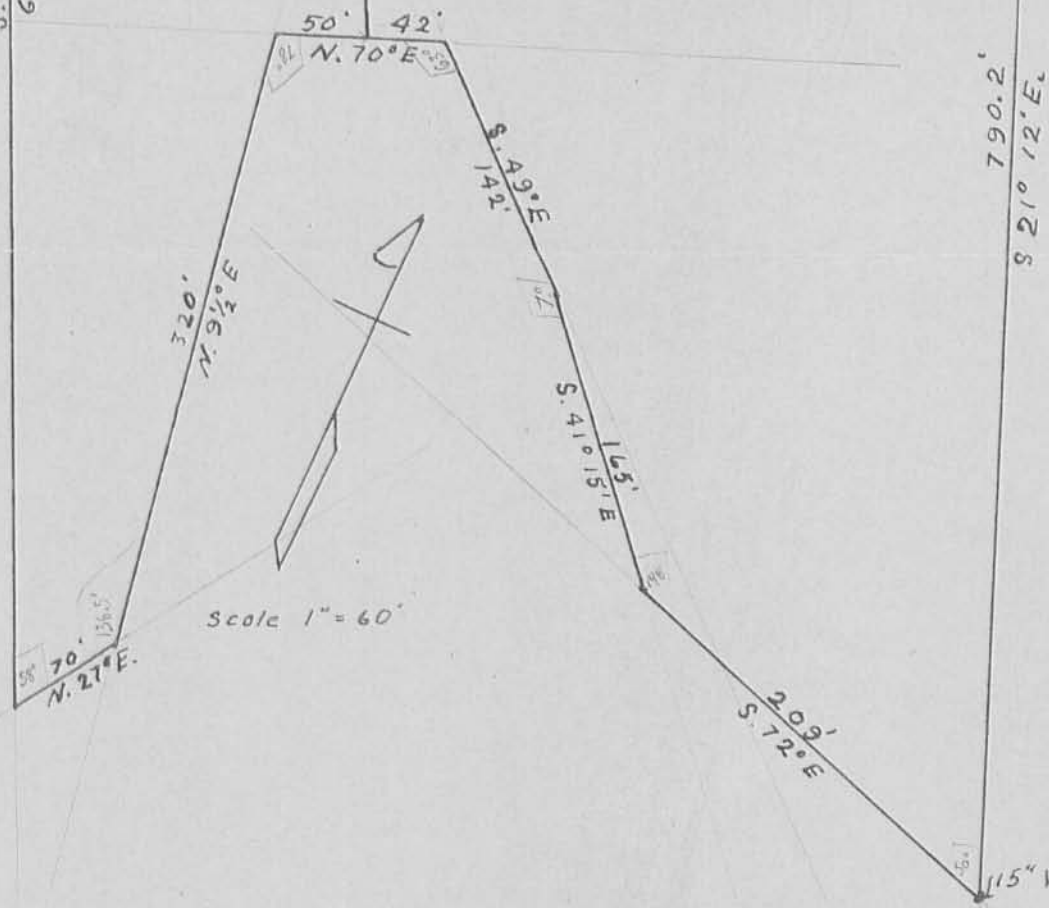
Jason Taylor

S. 22 1/2° E.  
660'

2.09-A

N. 24° 45' W.  
307'

4.36-A



790.2'  
S 21° 12' E.

Scale 1" = 60'

I hereby certify the above plat represents a survey of the lands of Ernest Barnes in V. M. S. 12277, Richland Township, Logan County, Ohio on the 17th day of September, 1951.

Registered Surveyor No. 2000

2P  
2046  
INDEXED ON MAP  
mic  
20